

WILLISTON AREA INFRASTRUCTURE ACTION PLAN

PHASE 1 ENGAGEMENT SUMMARY (OCTOBER - DECEMBER 2023)

WHAT IS AN AREA INFRASTRUCTURE ACTION PLAN?

An Area Infrastructure Action Plan seeks to better understand existing crash trends and identify life-saving design recommendations. This is accomplished through quantitative analysis of crash data and qualitative data gathering via stakeholder and public engagement. The result is a plan that will help the community prioritize safety improvements with the primary goal of reducing fatal or high-injury crashes.

This summary aims to consolidate the feedback gathered through this point in the planning process.

COMMUNITY INPUT IS IMPORTANT:

Community feedback will ensure the final product's applicability and efficacy in Williston. This information will be used by the City Council, city staff, and other partners to make decisions for the foreseeable future. The following pages share a summary of community input received, including a student focus group, community interest group, and an online survey.



WHAT ENGAGEMENT OCCURRED?



Focus Group x5

Nov. - Dec. '23
40+ participants

100+ Mapped Comments



Online Survey

Oct. - Dec. '23
14 Questions

325+ Respondents!



Online Comment Map

Nov. - Dec. '23

125+ Locations Identified
85 Detailed Responses



WHAT WERE THE COMMON THEMES OF COMMUNITY FEEDBACK?

- More than half of survey respondents are concerned with reckless/careless driving (54.91%) or speeding vehicles (50.31%)
- Nearly three-quarters of respondents had witnessed or were directly involved in a vehicular crash or near-miss incident involving a vehicle, pedestrian, or bicycle.
- Poor lighting was noted in several of the focus groups as being an area of specific concern.
- Snow removal, whether removal frequency, specific problem areas within the community, or inhibitors to mobility was a common theme amongst focus group participants.
- The need for more clear pavement markings or better removal of old pavement markings was noted across all three methods of public engagement.

PHASE 1 ENGAGEMENT SUMMARY

ONLINE SURVEY SUMMARY (OCTOBER - DECEMBER 2023)



ONLINE SURVEY RESULTS

The online community survey was promoted through postcards with a survey QR code and was distributed at two public social events. It was also distributed to Senior Center participants, via the Community Action Partnership, and with books at the library, and was promoted via social media, the City's website, a press release from the City's Communication Department, and a push notification from the Williston School District via ParentSquare. The survey was open from October through December 2023. It asked residents to share locations of concern, traveling habits, personal experiences, and ideas to improve travel safety, etc.

325+

Responses

700+

Open-ended Comments

More than 325 responses were received, with more than 700 open-ended comments. The following section highlights the information culled from the online survey.

SURVEY RESPONDENT CHARACTERISTICS

Age

>70%

of respondents were between the ages of 25 and 54, with the majority being between the ages of 35 and 44

Gender

59.6%

of respondents identified as female

The majority of respondents identified as White at 79.8%. American Indian/Alaskan Native was the next highest at 1.8%, or 6 total responses. Black or African-American and those indicating Multiple Ethnicities each had 1.2% of total responses. Finally, 16.0% of the respondents either preferred not to answer or represented less than 1% of total responses.

Racial Background

Percentage

White	79.8%
American Indian/Alaskan Native	1.8%
Black or African-American	1.2%
Multiple Ethnicities	1.2%
Prefer Not Answer/All Other	16.0%

CITY OF

WILLISTON



COMMUNITY SURVEY SUMMARY (OCTOBER - DECEMBER 2023)



99.3%

More than 99% of people who took the survey indicated they generally drive to get around. The next most common modes were walking (32.5%) and biking (14.4%). Using a wheelchair/mobility device, taking the bus, and using ride-share services were each selected by less than 3% of respondents.

^ Respondents could select up to three options

Percentage

Reckless/Careless Driving	54.9%
Speeding Vehicles	50.3%
Poor Road Conditions	39.6%
Cars Failing to Yield	39.3%
Crossing Busy Streets	20.3%

**word clouds show the most frequent answers.



PHASE 1 ENGAGEMENT SUMMARY

COMMUNITY SURVEY SUMMARY (OCTOBER - DECEMBER 2023)



COMMUNITY SURVEY RESULTS

Q: Have you witnessed a crash or near miss; or been, or almost been, in a crash or near miss involving a vehicle, bicycle, or pedestrian in the Williston area?

72.7%

More than 72% of people have personally witnessed or been directly involved in a vehicle crash or near miss.

HAVE YOU BEEN IN OR WITNESSED A CRASH/NEAR MISS?

Who was involved? (more than one answer selectable)

Response	Count	Percentage
Vehicle(s)	219	67.2%
Pedestrian(s)	66	20.3%
Bicycle(s)	26	8.0%
Other	6	1.8%

What happened?

*Top five percentages provided based on 174 responses with sufficient context to assign to a category.

Road Condition - 3%

Speeding - 10%

Dangerous/Confusing Intersection/Driveway - 7%

Lack of Center Turn Lane - 1%

Pedestrian/Bicycle - 23%

Poor Lighting - 2%

Reckless Driving - 2%

Failure to Yield - Automobile - 45%

Lack of Stop Control Signage/Signals/Road Markings - 5%

Schools - Pedestrian and Auto - 2%

COMMUNITY SURVEY SUMMARY (OCTOBER - DECEMBER 2023)



41.7%

41.7% of people indicated that they have concerns about the sidewalk/pathway gaps or crossing a roadway on foot or bike in Williston.

[illegible]

OPEN-ENDED RESPONSES

*word clouds show the most frequent answers.

PHASE 1 ENGAGEMENT SUMMARY

CHAMBER FOCUS GROUP - NOVEMBER 30, 2023

The Chamber of Commerce Focus Group included nine members of the Williston Area Chamber of Commerce. Members were given an introduction to the plan, as well as a brief presentation by the consultants for the project. Additional time was provided for a discussion, including questions and corresponding answers.



FEEDBACK HIGHLIGHTS



- Sidewalks frequently blocked by snow berms
- City staffing shortages affecting snow removal efforts
- Not all neighborhoods plowed with same frequency



- Driver education needs to be improved surrounding the use of roundabouts



- Traffic control at unmarked intersections is needed
- Specific concern at Main/11th St and 11th St/2nd Ave
- Challenges with left turn lanes across the community



- Night visibility is inadequate in certain areas
- Lack of line striping or old/poorly removed lines creates further confusion during night driving conditions

PHASE 1 ENGAGEMENT SUMMARY

RECREATION FOCUS GROUP - DECEMBER 12, 2023

The Recreation Focus Group included individuals that have a strong interest in parks and recreation activities, such as walking, biking, and/or running. The focus group members included representation from Williston Parks and Recreation District, the Williston Housing Authority, the Williston School District, and others hosting or partaking in physical activities that interact with the areas transportation network.

FEEDBACK HIGHLIGHTS



- Conflicts between parking, bike, and driving lanes
- Need for new bike lanes and improved connectivity
- Continued maintenance of existing facilities (e.g. painting)



- Roundabouts would improve overall safety at the following intersestions - 16th St/42nd Ave and 16th St/26th Ave



- Gaps in the sidewalk network in certain areas
- Growing need for safe routes to school
- Crosstraffic does not stop at certain crosswalk locations



- Additional lighting is needed across the entire network and in specific areas, such as: School pick-up/drop-off locations, crosswalks, bike paths, and intersections

PHASE 1 ENGAGEMENT SUMMARY

TARGETED USER FOCUS GROUP - DECEMBER 12, 2023

The Targeted User Focus Group is comprised of people who work with targeted users of in Williston such as those facing poverty, disability, and other vulnerable populations. The group included representation from the Upper Missouri Health Unit, Northwest Dakota Public Transit, Senior Center, and Olive Motherhood, an organization providing mental, emotional, and social supports for mothers. In addition, the group included a state legislator and an individual representing the visual impaired.

FEEDBACK HIGHLIGHTS



- General interest in more lighted areas for walking, especially at night
- Lack of sidewalks near heavy-pedestrian areas - parks, grocery stores, and library



- Seniors frequently rely on both public and private transportation, when available, for trips
- Appointments are cancelled due to lack of transportation
- Accessible pedestrian signals (APS) have provided safety improvements downtown; more is needed



- Parking practices of vehicles such as large trucks obscures visibility at intersections
- Poor snow plowing causes issues with parking and mobility for mobility impaired drivers



- More lighted areas are needed for pedestrians
- Flashing lights at crosswalks help to calm traffic

PHASE 1 ENGAGEMENT SUMMARY

CITIZEN FOCUS GROUP - DECEMBER 20, 2023

The Citizen Focus Group was comprised of members of the general public who were given a brief presentation introducing the plan and planning process. Following the presentation, focus group members were asked questions and encouraged to engage in discussion. The two primary questions revolved around methods of travel and specific areas thought to be unsafe within the Williston area.

FEEDBACK HIGHLIGHTS



- Seniors in particular face confusion near the fire department
- Drivers need more education for double left turn lanes
- Those riding scooters present unique challenges and opportunities for education



- Need for additional enforcement for speeding drivers
- Speed bumps and/or traffic cameras may help address speeding motorists



- Improvements are noticeable from four-to-two lane conversion along Main St
- Inclusion of bike lanes has helped reduce side-swiping of parked vehicles

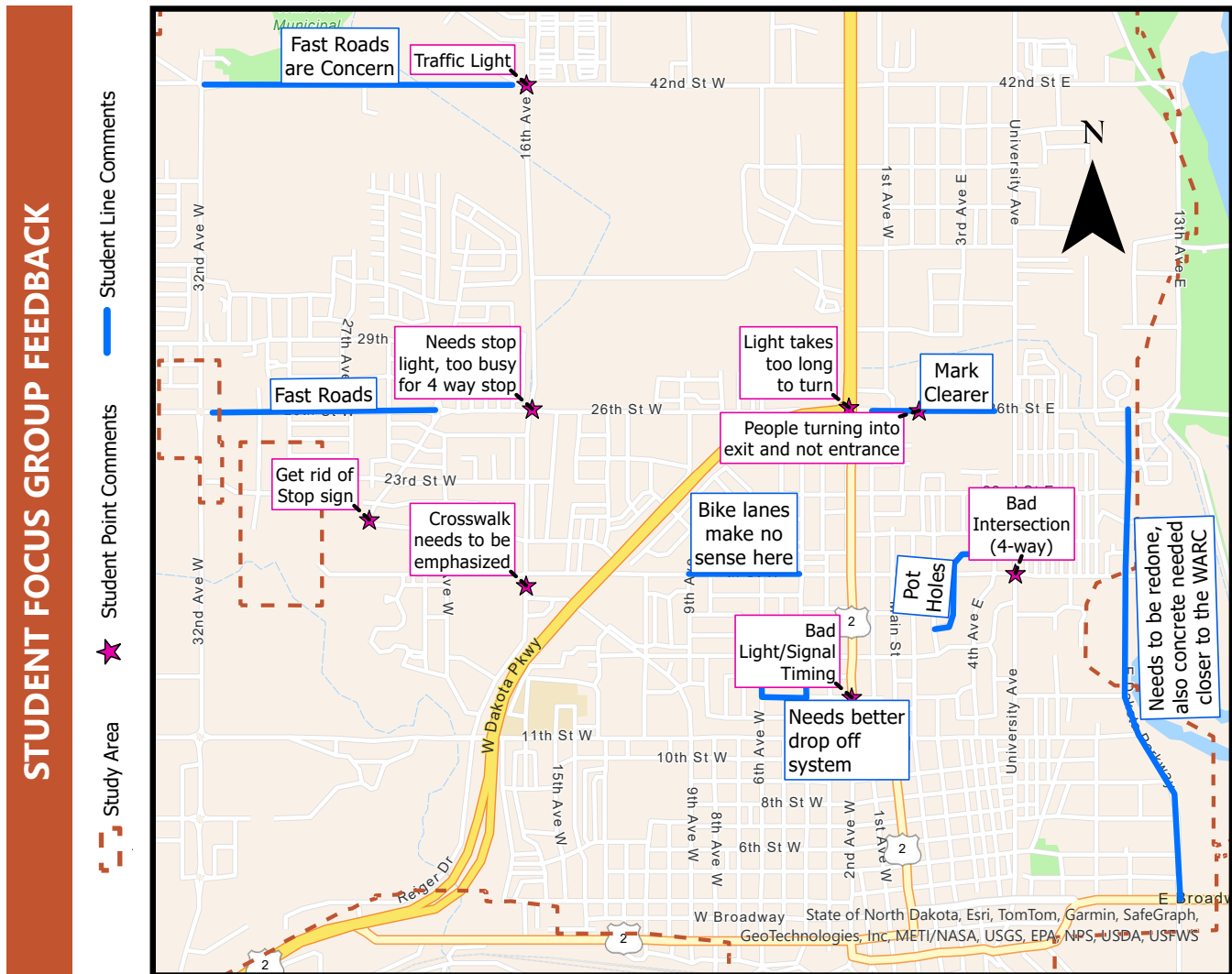


- Left turn lane at 11th and Dakota Parkway doesn't provide adequate time to perform left turn
- Vehicles remained stopped for too long at traffic lights

PHASE 1 ENGAGEMENT SUMMARY

STUDENT FOCUS GROUP - NOVEMBER 30, 2023

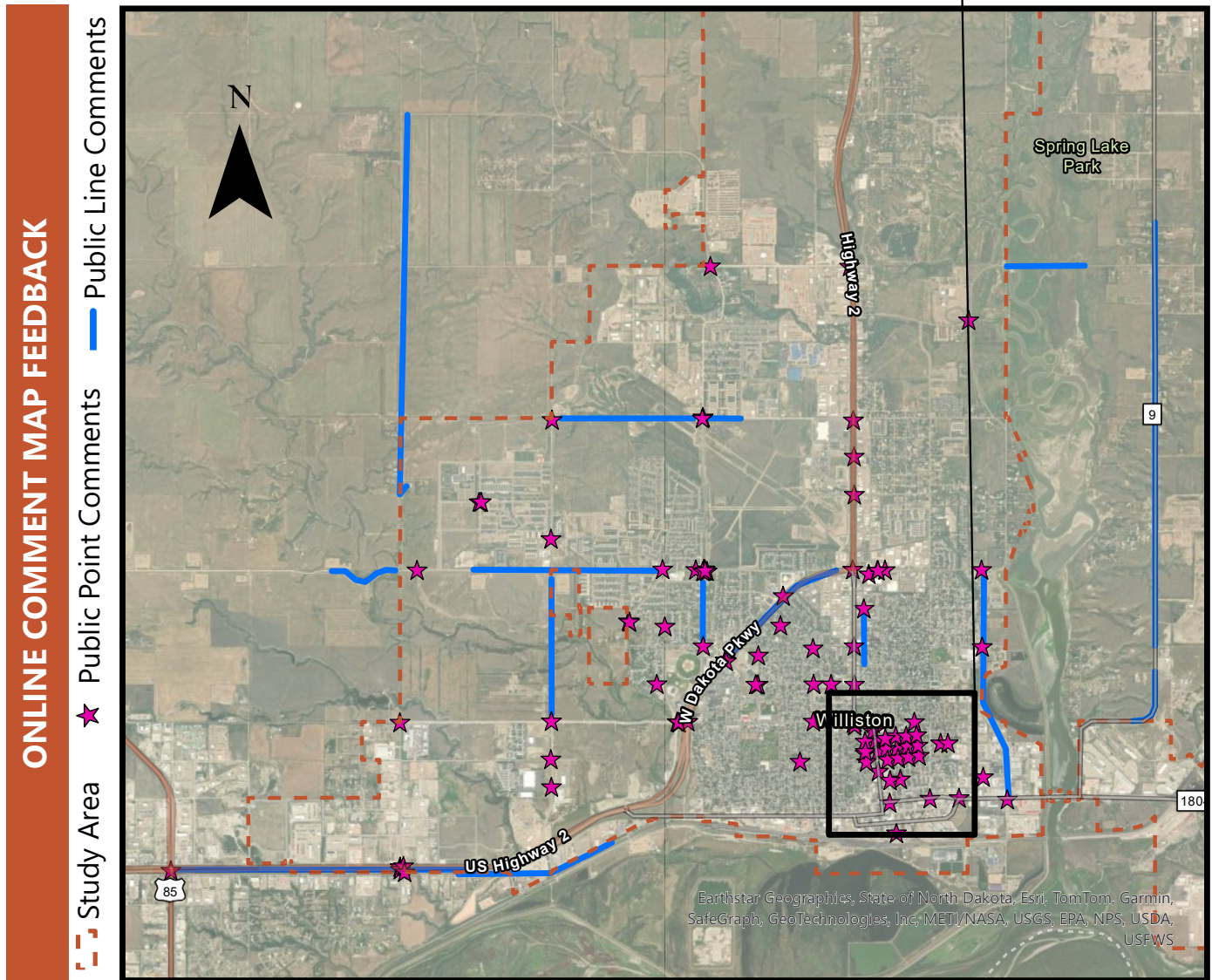
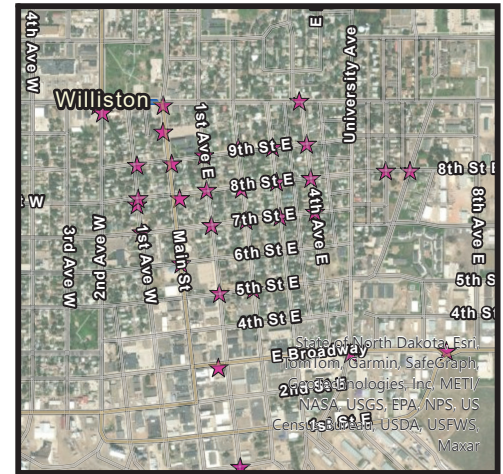
The Student Focus Group included students from Williston High School. The participants included 2-3 students from grades 9, 10, 11, and 12. The meeting included a short informal introduction to the plan and what professional planners do and what the planning process entails. Students were broken into groups of 2-3 and given aerial maps highlighting the road network. In total, students provided 15 comments surrounding their perceived safety concerns, which are provided in the map below.



PHASE 1 ENGAGEMENT SUMMARY

ONLINE COMMENT MAP - OCTOBER - DECEMBER 2023

The online comment map was open from October through December 2023 and gathered more than 125 specific points and street segments that the public deemed areas of particular concern. A map is provided below identifying places within the Williston area marked by respondents. The following page includes a summary of the feedback received.



FEEDBACK HIGHLIGHTS



- Difficulty for pedestrians and cyclists to cross certain intersections
- Lack of continuous sidewalks in some areas



- Additional enforcement is needed around schools to address speeding and ensure student safety
- Speed limits on certain road segments should be adjusted



- Various intersections labeled dangerous, with concerns about accidents and traffic flow
- Issues with drivers not yielding or understanding right-of-way
- Lack of signage at some intersections (see tight cluster of points on the map on the prior page)



- Parent pick-up causing issues with visibility and obstructing traffic around schools due to parked/waiting vehicles



- Unclear markings on the roadways leads to confusion
- Lack of lighting, especially around schools and intersections
- Suggestions for better road maintenance, lighting, and safety features



- Inconsistency and lack of synchronization of traffic lights in the area
- Additional stop lights needed for traffic control