



# EJScreen Community Report

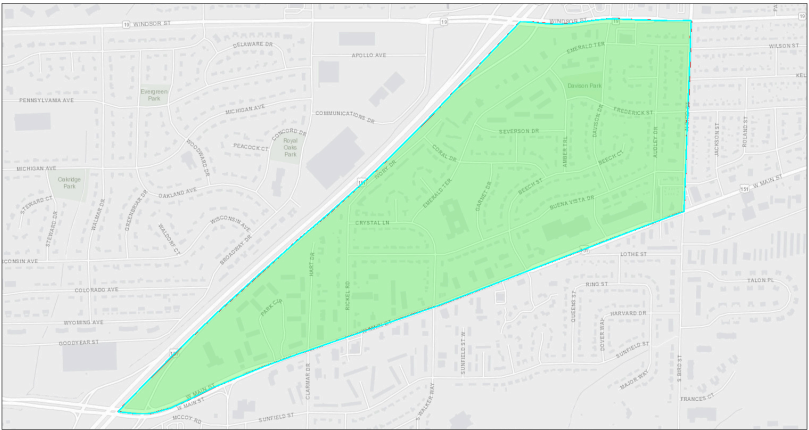
This report provides environmental and socioeconomic information for user-defined areas, and combines that data into environmental justice and supplemental indexes.

## Sun Prairie, WI

Blockgroup: 550250115052

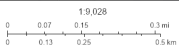
Population: 1,672

Area in square miles: 0.37



September 9, 2024

Project 1

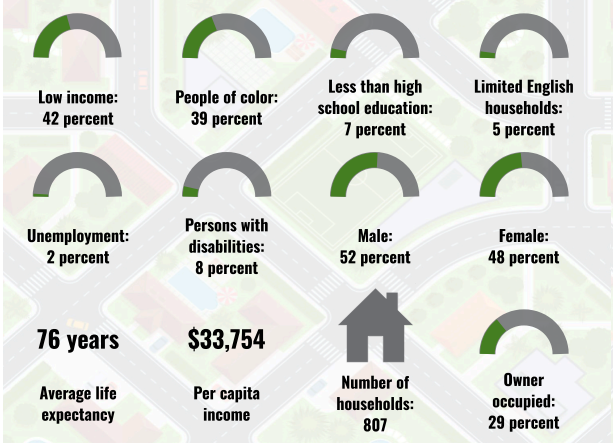


County of Dane, Esri, HERE, Garmin, GeoTechnology, Inc., Intermap, IGN, EPA, County of Dane, Esri, HERE

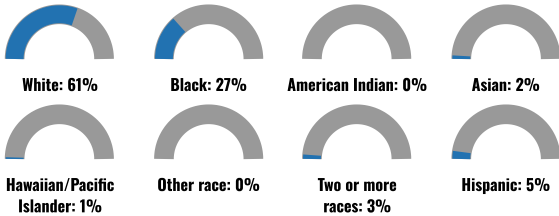
### LANGUAGES SPOKEN AT HOME

| LANGUAGE                       | PERCENT |
|--------------------------------|---------|
| English                        | 88%     |
| Spanish                        | 6%      |
| German or other West Germanic  | 1%      |
| Other Asian and Pacific Island | 2%      |
| Other and Unspecified          | 3%      |
| Total Non-English              | 12%     |

### COMMUNITY INFORMATION



### BREAKDOWN BY RACE



### BREAKDOWN BY AGE



### LIMITED ENGLISH SPEAKING BREAKDOWN



Notes: Numbers may not sum to totals due to rounding. Hispanic population can be of any race. Source: U.S. Census Bureau, American Community Survey (ACS) 2018-2022. Life expectancy data comes from the Centers for Disease Control.

Report for Blockgroup: 550250115052

Report produced September 9, 2024 using EJScreen Version 2.3

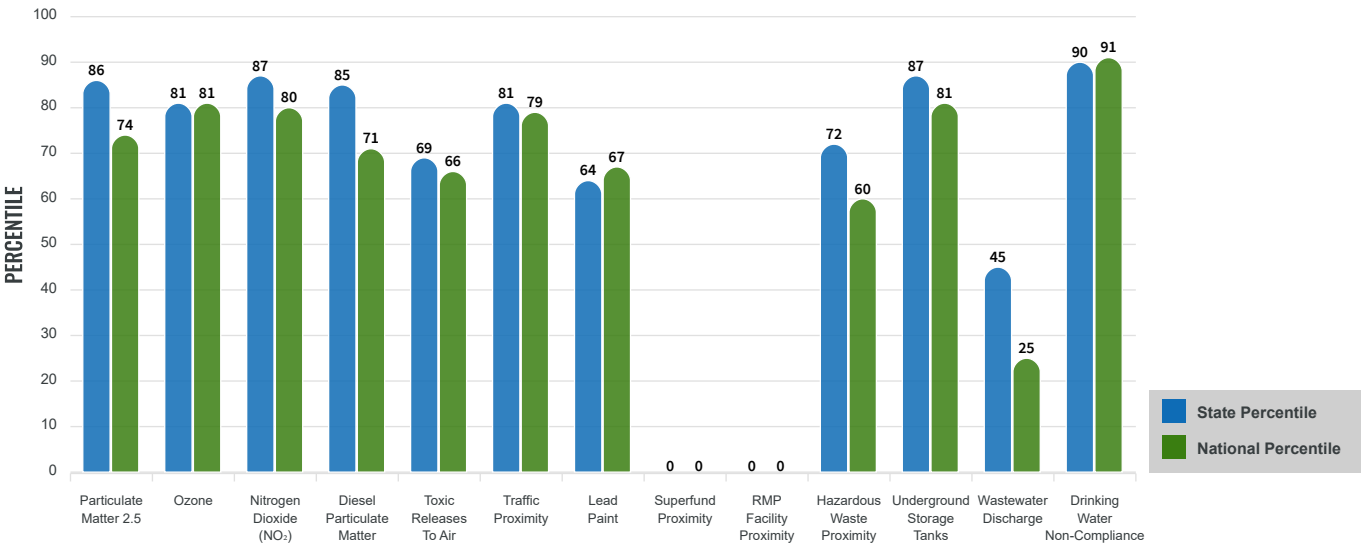
# Environmental Justice & Supplemental Indexes

The environmental justice and supplemental indexes are a combination of environmental and socioeconomic information. There are thirteen EJ indexes and supplemental indexes in EJScreen reflecting the 13 environmental indicators. The indexes for a selected area are compared to those for all other locations in the state or nation. For more information and calculation details on the EJ and supplemental indexes, please visit the [EJScreen website](#).

## EJ INDEXES

The EJ indexes help users screen for potential EJ concerns. To do this, the EJ index combines data on low income and people of color populations with a single environmental indicator.

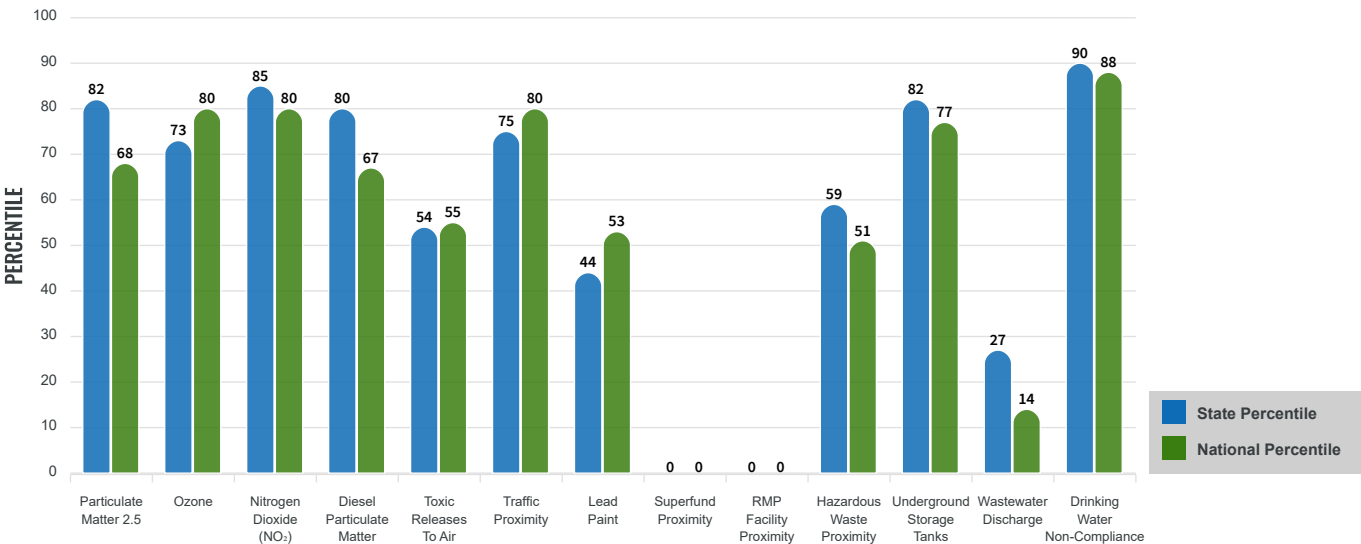
### EJ INDEXES FOR THE SELECTED LOCATION



## SUPPLEMENTAL INDEXES

The supplemental indexes offer a different perspective on community-level vulnerability. They combine data on percent low income, percent persons with disabilities, percent less than high school education, percent limited English speaking, and percent low life expectancy with a single environmental indicator.

### SUPPLEMENTAL INDEXES FOR THE SELECTED LOCATION



Report for Blockgroup: 550250115052  
Report produced September 9, 2024 using EJScreen Version 2.3

# EJScreen Environmental and Socioeconomic Indicators Data

| SELECTED VARIABLES  | VALUE     | STATE AVERAGE | PERCENTILE IN STATE | USA AVERAGE | PERCENTILE IN USA |
|---|-----------|---------------|---------------------|-------------|-------------------|
| <b>ENVIRONMENTAL BURDEN INDICATORS</b>                            |           |               |                     |             |                   |
| Particulate Matter 2.5 ( $\mu\text{g}/\text{m}^3$ )               | 8.56      | 7.9           | 69                  | 8.45        | 63                |
| Ozone (ppb)   | 66.6      | 64.6          | 54                  | 61.8        | 76                |
| Nitrogen Dioxide ( $\text{NO}_2$ ) (ppbv)                         | 11        | 8.1           | 85                  | 7.8         | 83                |
| Diesel Particulate Matter ( $\mu\text{g}/\text{m}^3$ )            | 0.185     | 0.14          | 74                  | 0.191       | 59                |
| Toxic Releases to Air (toxicity-weighted concentration)           | 520       | 8,100         | 35                  | 4,600       | 47                |
| Traffic Proximity (daily traffic count/distance to road)          | 2,600,000 | 3,700,000     | 61                  | 1,700,000   | 79                |
| Lead Paint (% Pre-1960 Housing)                                   | 0.21      | 0.39          | 30                  | 0.3         | 49                |
| Superfund Proximity (site count/km distance)                      | 0         | 0.32          | 0                   | 0.39        | 0                 |
| RMP Facility Proximity (facility count/km distance)               | 0         | 0.77          | 0                   | 0.57        | 0                 |
| Hazardous Waste Proximity (facility count/km distance)            | 0.85      | 2.3           | 40                  | 3.5         | 42                |
| Underground Storage Tanks (count/ $\text{km}^2$ )                 | 5.3       | 3.1           | 81                  | 3.6         | 80                |
| Wastewater Discharge (toxicity-weighted concentration/m distance) | 0.02      | 280           | 18                  | 700000      | 12                |
| Drinking Water Non-Compliance (points)                            | 5         | 9.6           | 95                  | 2.2         | 90                |
| <b>SOCIOECONOMIC INDICATORS</b>                                   |           |               |                     |             |                   |
| Demographic Index USA   | 1.61      | N/A           | N/A                 | 1.34        | 67                |
| Supplemental Demographic Index USA                                | 1.62      | N/A           | N/A                 | 1.64        | 54                |
| Demographic Index State   | 1.9       | 1.16          | 84                  | N/A         | N/A               |
| Supplemental Demographic Index State                              | 1.64      | 1.38          | 72                  | N/A         | N/A               |
| People of Color   | 39%       | 21%           | 84                  | 40%         | 57                |
| Low Income  | 42%       | 27%           | 81                  | 30%         | 73                |
| Unemployment Rate   | 2%        | 4%            | 43                  | 6%          | 33                |
| Limited English Speaking Households                               | 5%        | 2%            | 90                  | 5%          | 74                |
| Less Than High School Education                                   | 7%        | 8%            | 61                  | 11%         | 47                |
| Under Age 5   | 5%        | 5%            | 55                  | 5%          | 55                |
| Over Age 64   | 12%       | 18%           | 29                  | 18%         | 34                |

\*Diesel particulate matter index is from the EPA's Air Toxics Data Update, which is the Agency's ongoing, comprehensive evaluation of air toxics in the United States. This effort aims to prioritize air toxics, emission sources, and locations of interest for further study. It is important to remember that the air toxics data presented here provide broad estimates of health risks over geographic areas of the country, not definitive risks to specific individuals or locations. More information on the Air Toxics Data Update can be found at: <https://www.epa.gov/haps/air-toxics-data-update>.

## Sites reporting to EPA within defined area:

|  |   |
|--|---|
| Superfund .....  | 0 |
| Hazardous Waste, Treatment, Storage, and Disposal Facilities ..... | 0 |
| Water Dischargers .....  | 1 |
| Air Pollution .....  | 0 |
| Brownfields .....  | 0 |
| Toxic Release Inventory .....                                      | 0 |

## Other community features within defined area:

|                         |   |
|-------------------------|---|
| Schools .....           | 1 |
| Hospitals .....         | 0 |
| Places of Worship ..... | 0 |

## Other environmental data:

|                          |    |
|--------------------------|----|
| Air Non-attainment ..... | No |
| Impaired Waters .....    | No |

|  |     |
|--|-----|
| Selected location contains American Indian Reservation Lands* .....            | No  |
| Selected location contains a "Justice40 (CEJST)" disadvantaged community ..... | No  |
| Selected location contains an EPA IRA disadvantaged community .....            | Yes |

Report for Blockgroup: 550250115052

Report produced September 9, 2024 using EJScreen Version 2.3

## EJScreen Environmental and Socioeconomic Indicators Data

### HEALTH INDICATORS

| INDICATOR                 | VALUE | STATE AVERAGE | STATE PERCENTILE | US AVERAGE | US PERCENTILE |
|---------------------------|-------|---------------|------------------|------------|---------------|
| Low Life Expectancy       | 22%   | 19%           | 81               | 20%        | 73            |
| Heart Disease             | 5.2   | 5.6           | 39               | 5.8        | 40            |
| Asthma                    | 11.3  | 10.7          | 83               | 10.3       | 79            |
| Cancer                    | 6.3   | 7             | 27               | 6.4        | 45            |
| Persons with Disabilities | 8.1%  | 12.4%         | 14               | 13.7%      | 17            |

### CLIMATE INDICATORS

| INDICATOR     | VALUE | STATE AVERAGE | STATE PERCENTILE | US AVERAGE | US PERCENTILE |
|---------------|-------|---------------|------------------|------------|---------------|
| Flood Risk    | 2%    | 9%            | 21               | 12%        | 24            |
| Wildfire Risk | 0%    | 0%            | 0                | 14%        | 0             |

### CRITICAL SERVICE GAPS

| INDICATOR                    | VALUE | STATE AVERAGE | STATE PERCENTILE | US AVERAGE | US PERCENTILE |
|------------------------------|-------|---------------|------------------|------------|---------------|
| Broadband Internet           | 10%   | 13%           | 42               | 13%        | 49            |
| Lack of Health Insurance     | 5%    | 6%            | 50               | 9%         | 35            |
| Housing Burden               | No    | N/A           | N/A              | N/A        | N/A           |
| Transportation Access Burden | No    | N/A           | N/A              | N/A        | N/A           |
| Food Desert                  | No    | N/A           | N/A              | N/A        | N/A           |

Report for Blockgroup: 550250115052

Report produced September 9, 2024 using EJScreen Version 2.3