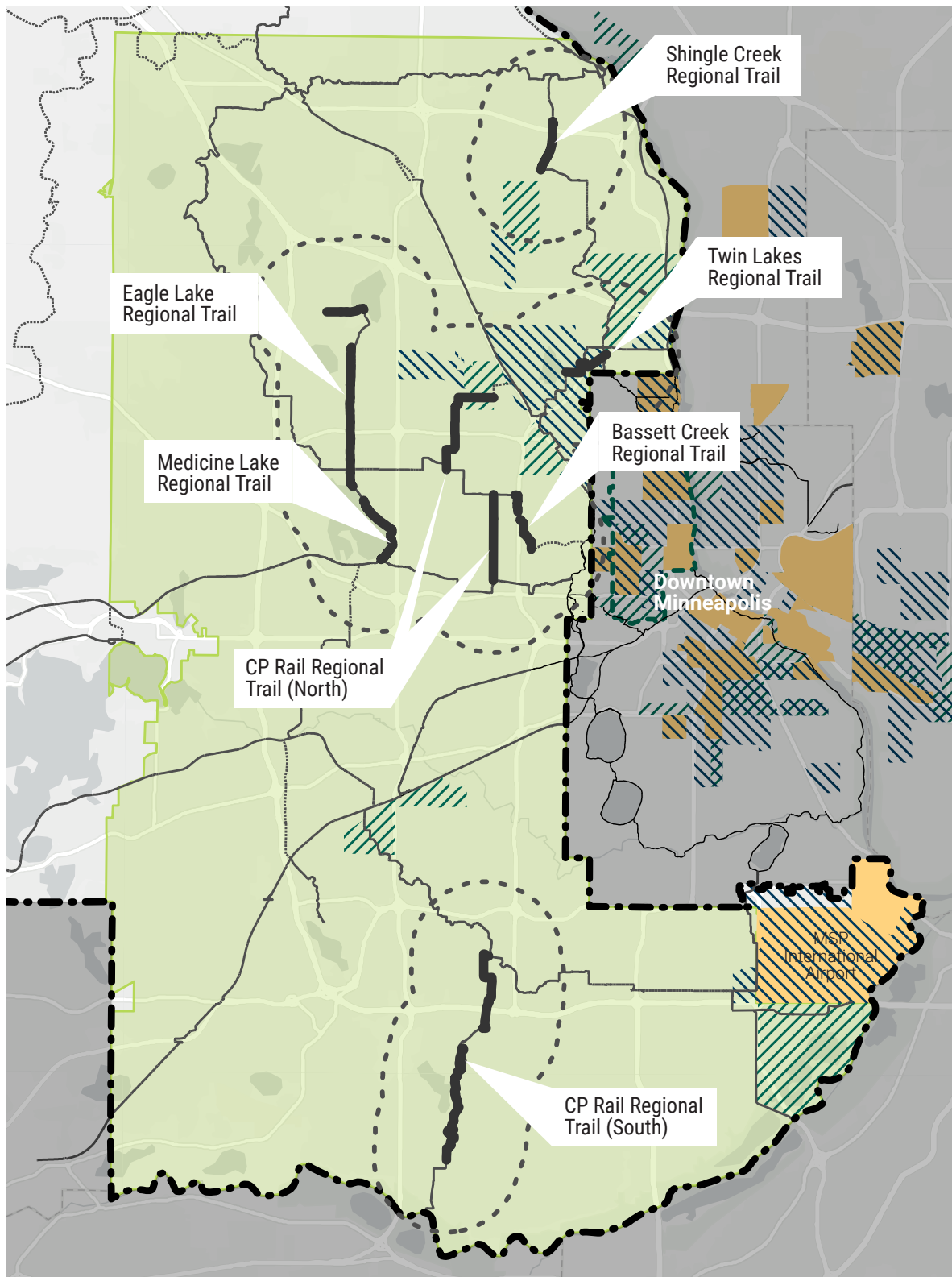
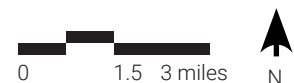


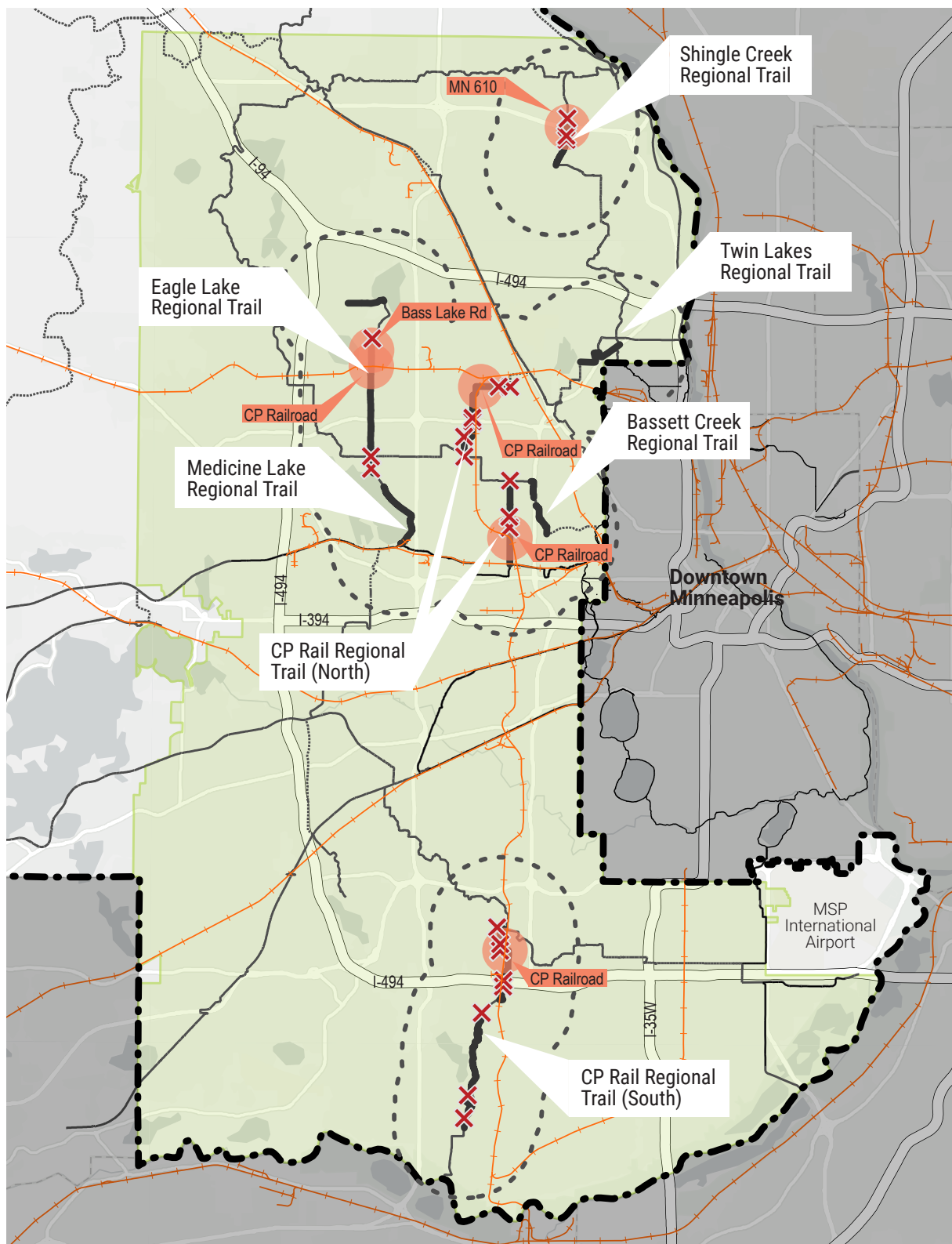
**Figure 1: Project Location**



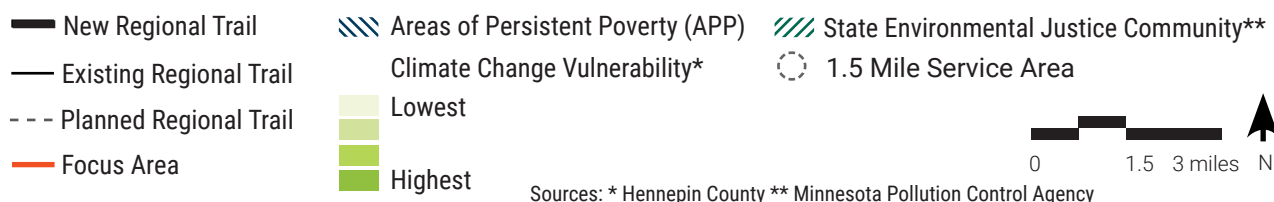
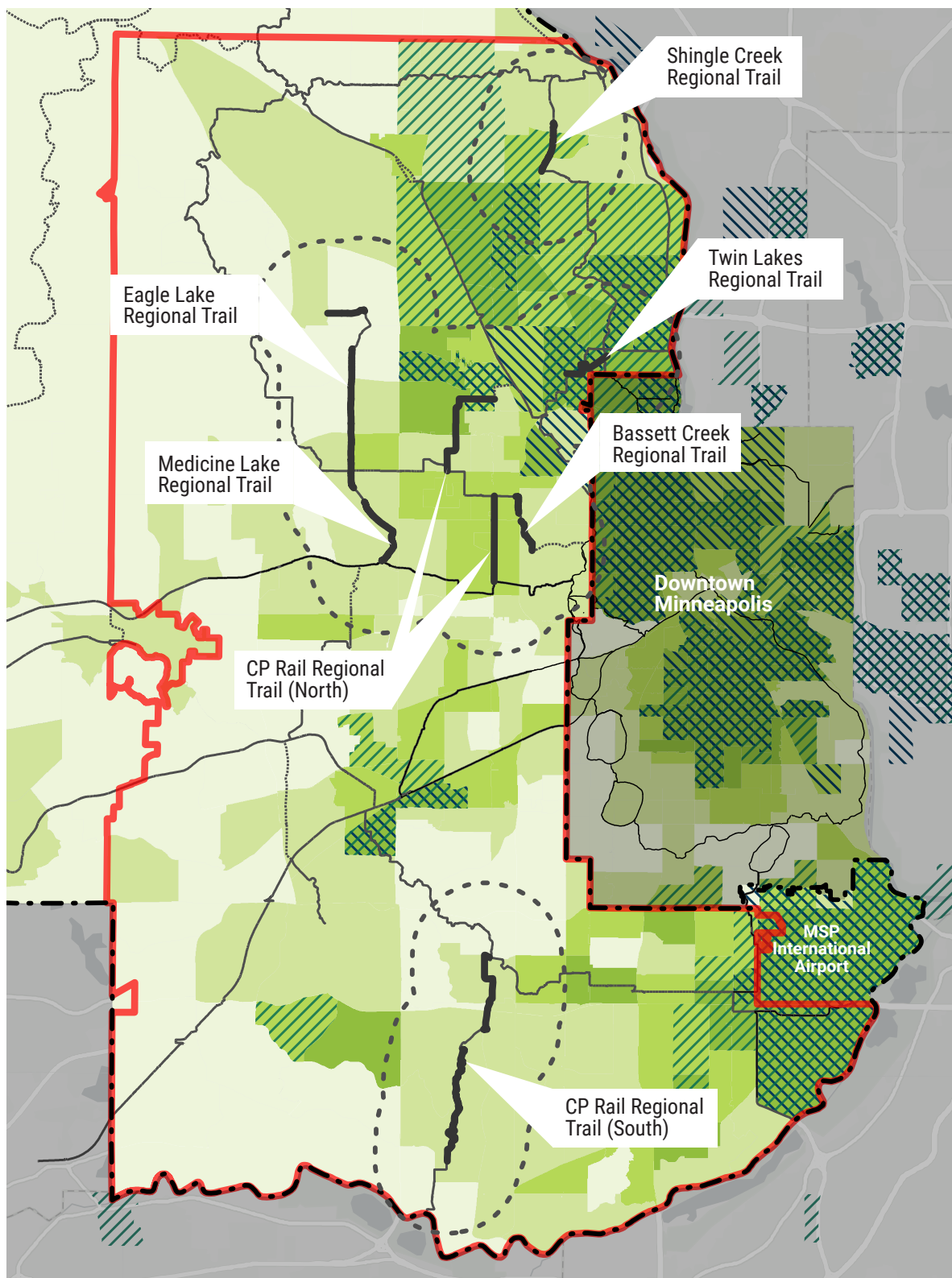
- Project Location
- Existing Regional Trail
- - - Planned Regional Trail
- Historically Disadvantaged Communities (HDC)
- Areas of Persistent Poverty (APP)
- Opportunity Zones
- 1.5 Mile Service Area
- Focus Area



**Figure 2: Project Relationship to Equity Communities**

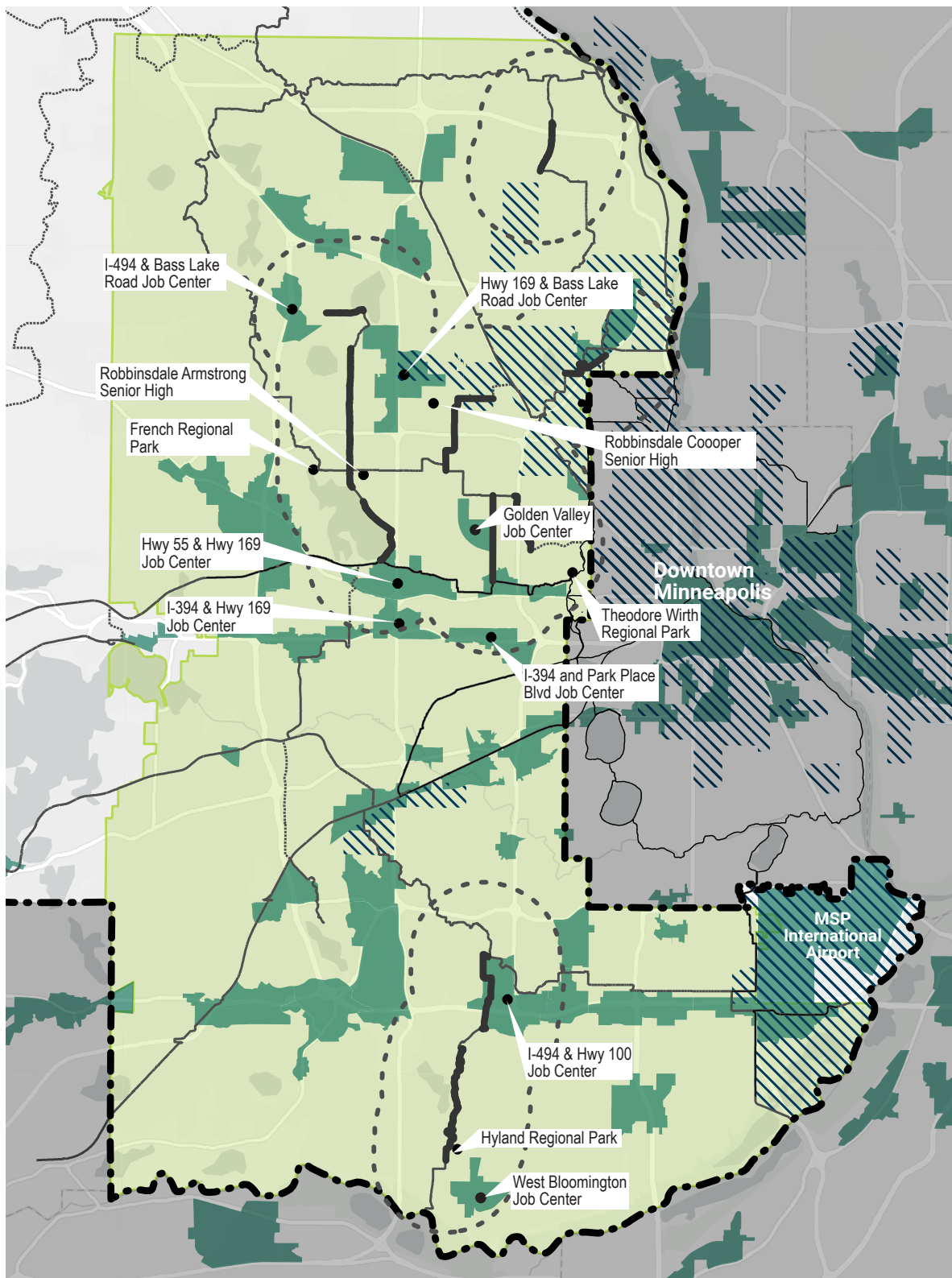


**Figure 3: Known Safety Problems**



**Figure 4: Environmental Justice**

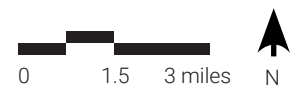
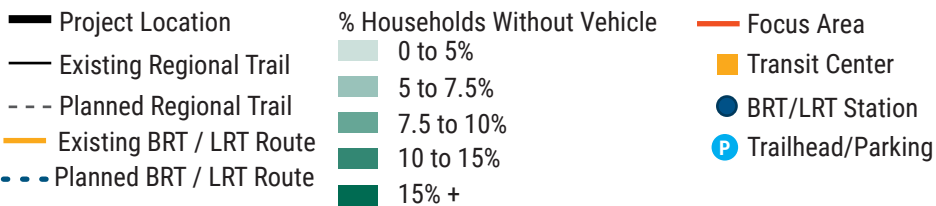
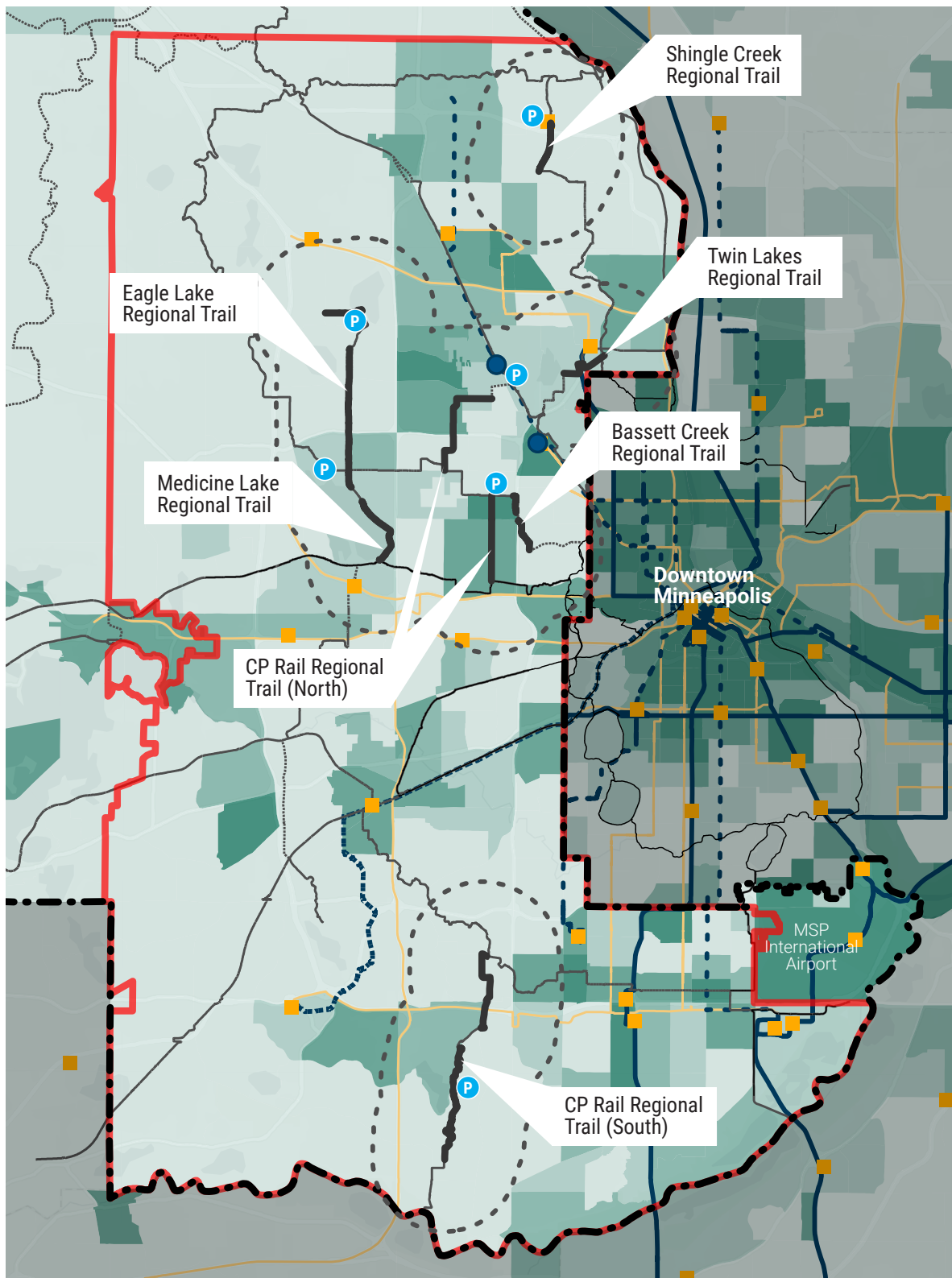




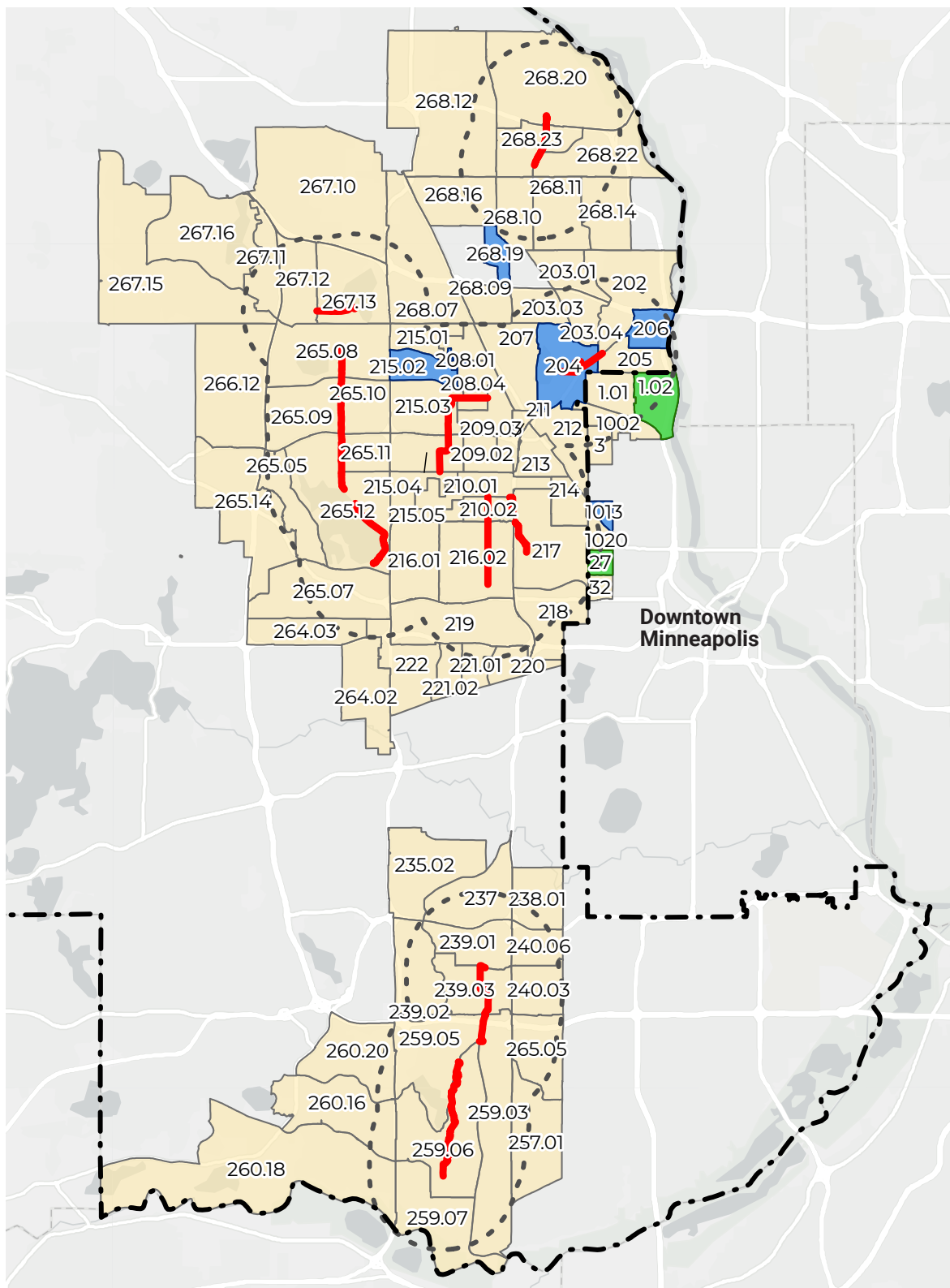
- Project Location
- Existing Regional Trail
- Planned Regional Trail
- Focus Area
- Job and Activity Center
- Regional Bicycle Transportation Network Destination
- Areas of Persistent Poverty (APP)



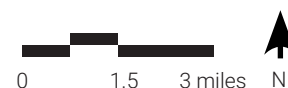
**Figure 5: Access to Opportunities**



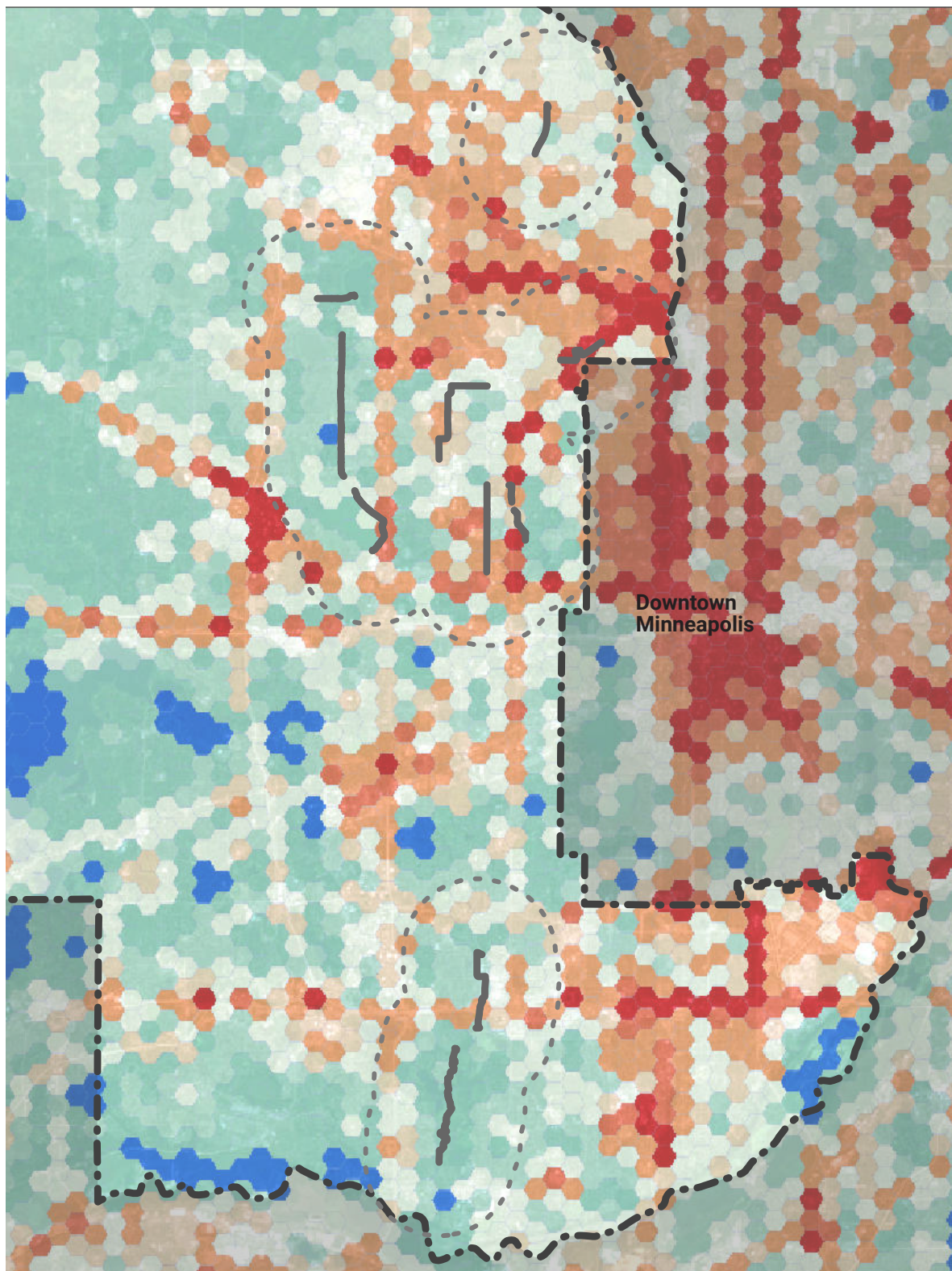
**Figure 6: Mobility**



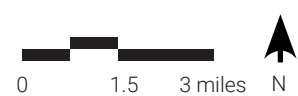
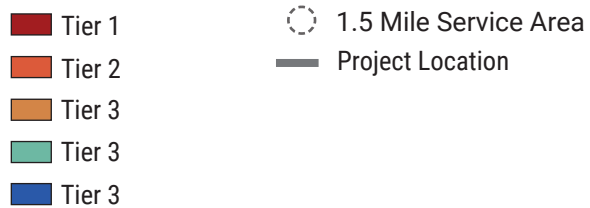
Project Location  
 Census Tract  
 Areas of Persistent Poverty  
 Areas of Persistent Poverty & Historically Disadvantaged Communities  
 Figure 7: Census Tracts







Metro District PAWS Scores



**Figure 8: Priority Areas for Walking Study (PAWS)**



**Table 1**

	Construct New Trail	Reconstruct Existing Trail	Improve Existing Trail	Total Trail Length	Improved Crossing	APS Signal Upgrade	Accessible Bus Stop Landing	Trail Counter	E-Bike Charger
Bassett Creek Regional Trail		1.1		1.1	6			1	
CP Rail Regional Trail - North	3.7		1.1	4.8	48	3	2		
CP Rail Regional Trail - South	1.3	3.4		4.7	11	4	3	1	2
Eagle Lake Regional Trail	0.5	1.4	1.3	3.2	11	1	3	1	2
Medicine Lake Regional Trail		2.3		2.3	5		1	1	2
Shingle Creek Regional Trail		0.8		0.8	7	2		1	
Twin Lakes Regional Trail		0.4		0.4	1				
Project Total	5.5	9.4	2.4	17.3	89	10	9	5	6

First Tier Trails,  
Greenways, and  
Parks Master Plan

**2000**

Bassett Creek  
Regional Trail  
Master Plan

**2012**

CP Rail Regional  
Trail South Segment  
Master Plan

**2019**

Eagle Lake / Bryant  
Lake Regional Trail  
Master Plan

**2021**

**2011**

Twin Lakes  
Regional Trail  
Master Plan

**2015**

2040 Hennepin  
County Bicycle  
Transportation Plan

**2020**

TRPD 2040  
Systems Plan

**2022**

Nine Regional Trails Master Plan  
(includes Shingle Creek Regional  
Trail & Medicine Lake Regional Trail)

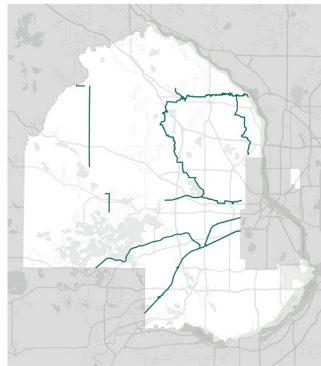
CP Rail Regional Trail North  
Segment Master Plan (route  
approved Fall 2022, master plan  
completion anticipated Spring 2023)



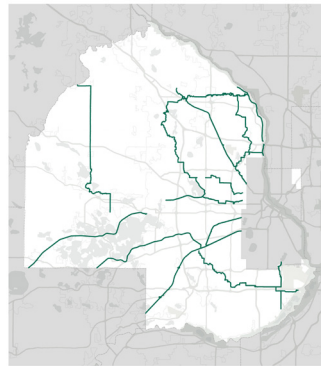
1980



1997



2009



2023

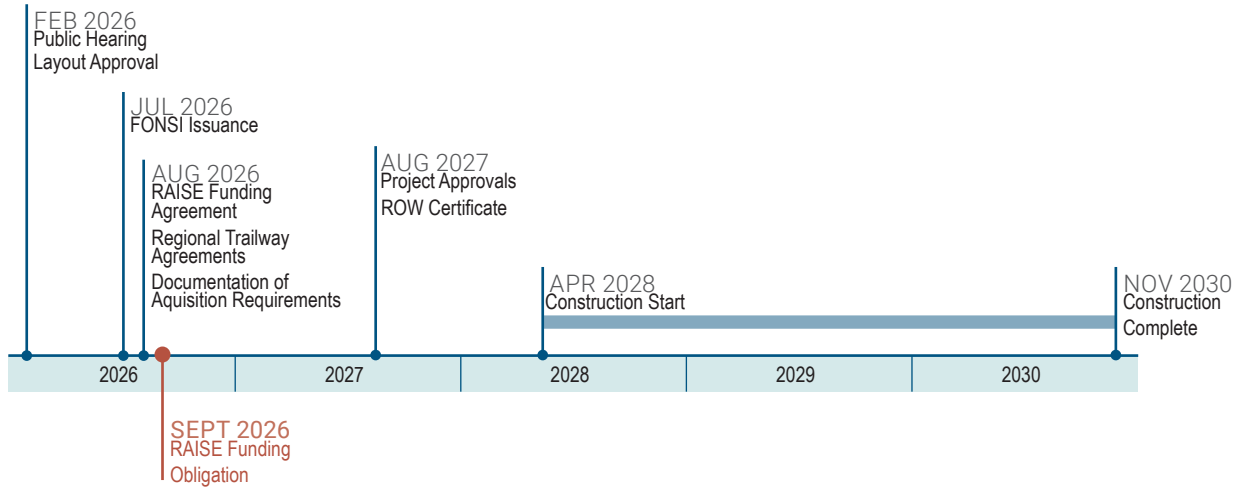
	Condition
Bassett Creek Regional Trail	0.1 miles narrow sidewalk with substandard curb; 1 mile end-of-life local trail – pavement cracking, occasional flooding, does not meet ADA
CP Rail Regional Trail	N/A
Eagle Lake Regional Trail	1.5 miles end-of-life local trail: substandard, 6-8' wide, does not meet ADA
Medicine Lake Regional Trail	2.3 miles end-of-life regional trail: 8' wide, pavement in poor condition
Shingle Creek Regional Trail	0.84 miles end of life concrete sidewalk: 6' wide, intersections do not meet ADA requirements
Twin Lakes Regional Trail	0.05 miles sidewalk replacement to trail; .039 miles end-of-life regional trail; substandard pedestrian ramp



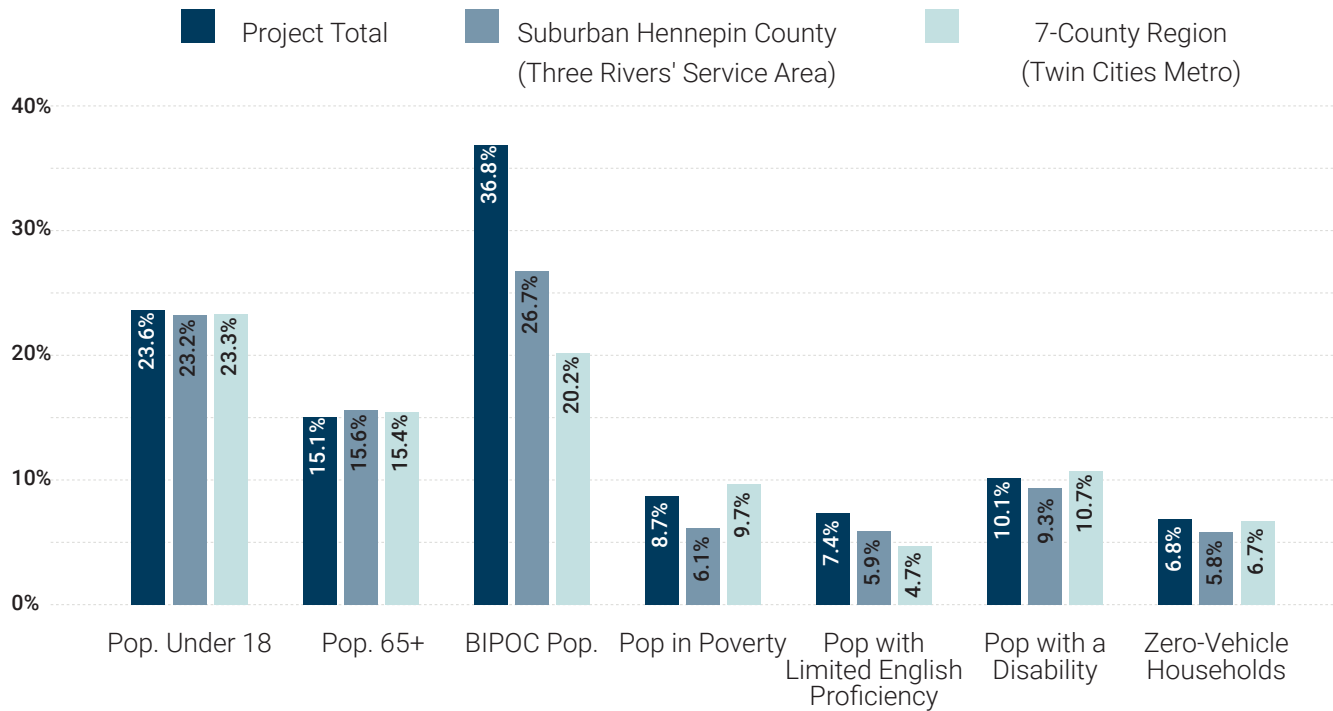
	Construct New Trail	Reconstruct Existing Trail	Improve Existing Trail	Total Trail Length	Improved Crossings
Bassett Creek Regional Trail	0.25	0.7		0.95	3
Bryant Lake Regional Trail	3.7		1	4.7	16
CP Rail Regional Trail	1.75		5.25	7	8
Eagle Lake Regional Trail	1.5	1.5	2.2	5.2	12
Medicine Lake Regional Trail		3.75		3.75	6
Nine Mike Creek Regional Trail		0.4		0.4	1
Rush Creek Regional Trail					1
Shingle Creek Regional Trail		0.84		0.84	4
Project Total	7.2	8.19	8	23.4	51

Scenario	Project Benefits (2020 Dollars)	Initial Capital Cost (2020 Dollars)	Benefit-Cost Ratio (7% Discount Rate)	Net Present Value (2020 Dollars)
No Build v.s Build	\$77.1 million	\$17.3 million	4.5	\$59.8 million

	Higher Education	School Program	Gov't Office	Medical Clinic	Cultural Institution	Place of Worship	Total
Bassett Creek Regional Trail	2	35	4	4	3	61	109
Bryant Lake Regional Trail	2	36	6		0	22	66
CP Rail Regional Trail	7	20	11	3	2	30	73
Eagle Lake Regional Trail	2	21	10	1		13	47
Medicine Lake Regional Trail		20	8	2	1	16	47
Nine Mike Creek Regional Trail		22	4		3	19	48
Rush Creek Regional Trail	1	5	1			9	16
Shingle Creek Regional Trail		51	16	2	2	71	142
Project Total	14	210	60	12	11	241	548









\*Includes pre-repair project to correct settlement, root damage, seal cracks, and general surface distortions

