

STATE OF SOUTH DAKOTA
DEPARTMENT OF TRANSPORTATION
PLANS FOR PROPOSED

STATE OF SOUTH DAKOTA	PROJECT	SHEET	TOTAL SHEETS
	NH 0073(73)62 P 0248(17)162	1	1

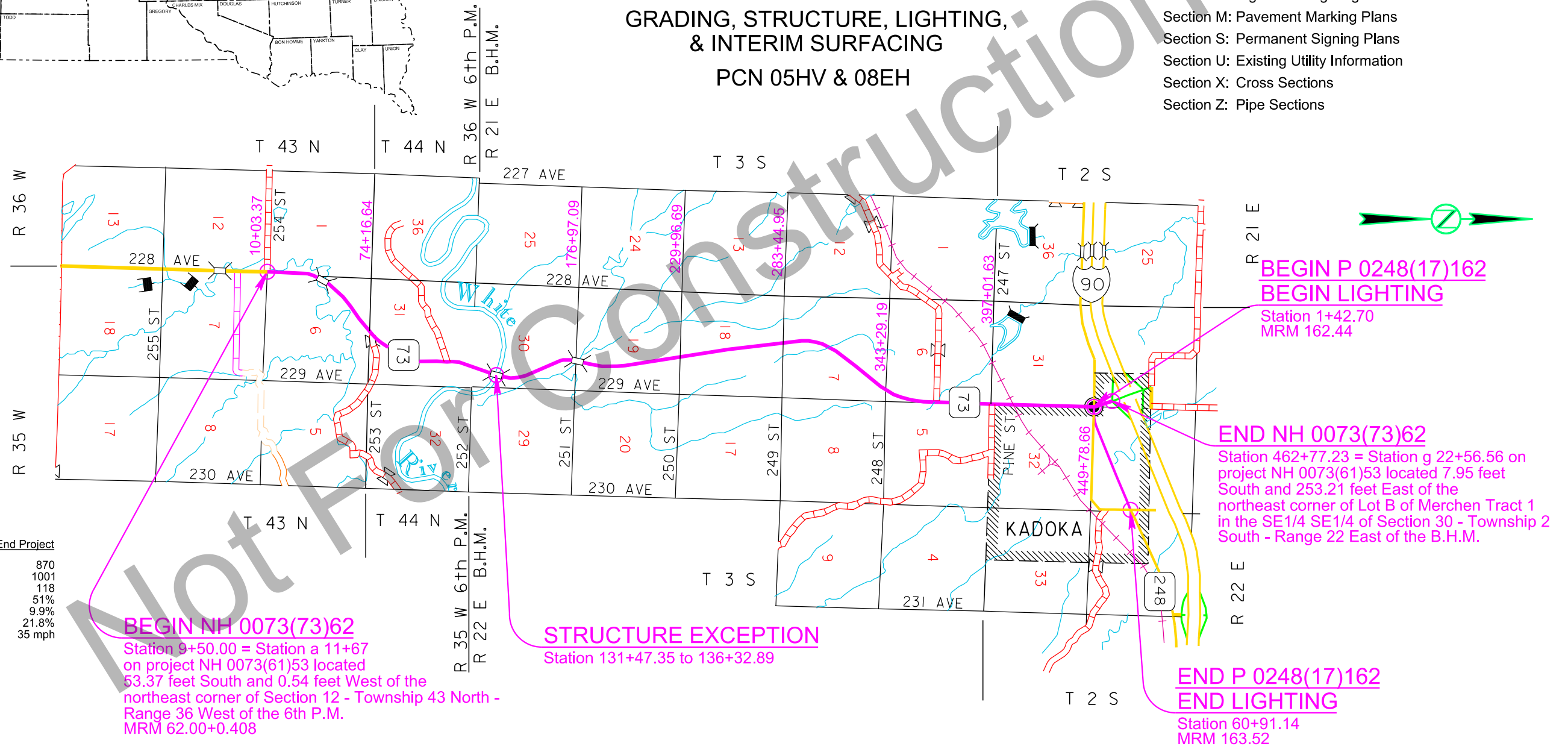
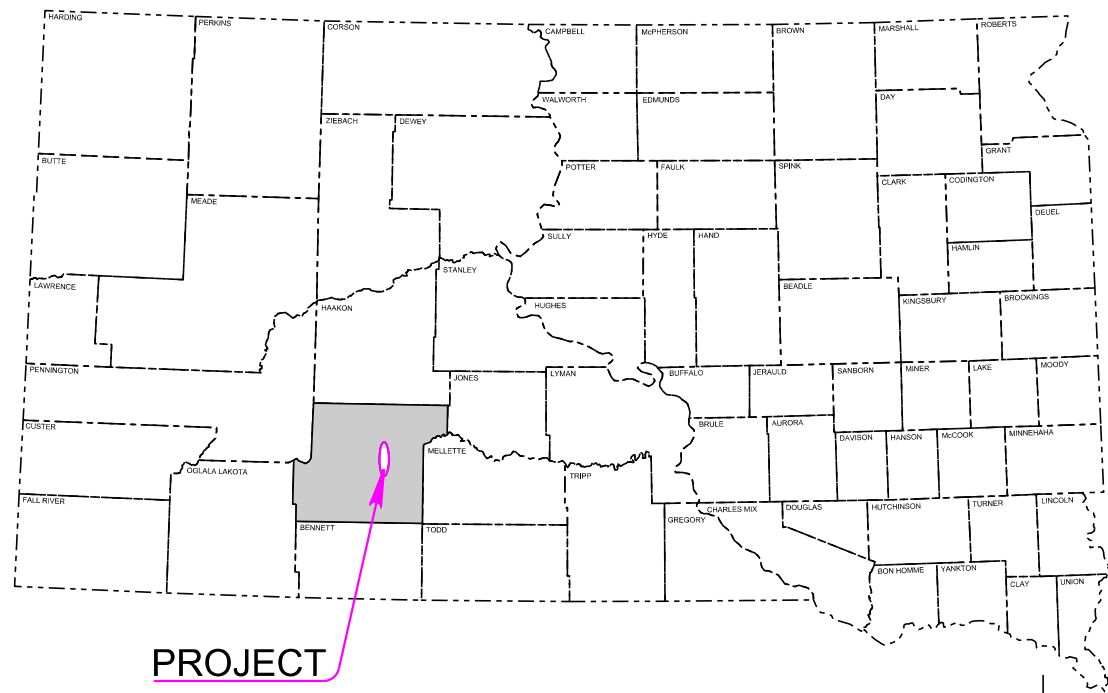
Plotting Date: 07/14/2021

PROJECTS NH 0073(73)62 &
P 0248(17)162
S.D. HIGHWAYS 73 & 248
JACKSON COUNTY

GRADING, STRUCTURE, LIGHTING,
& INTERIM SURFACING
PCN 05HV & 08EH

INDEX OF SECTIONS

- Section A: Estimate of Quantities and Environmental Commitments
- Section B: Grading Plans
- Section C: Traffic Control Plans
- Section D: Erosion and Sediment Control Plans
- Section E: Structure Plans
- Section F: Surfacing Plans
- Section L: Signal and Lighting Plans
- Section M: Pavement Marking Plans
- Section S: Permanent Signing Plans
- Section U: Existing Utility Information
- Section X: Cross Sections
- Section Z: Pipe Sections



DESIGN DESIGNATION

Begin Project to Sta 435+00	Sta 435+00 to End Project
AAADT (2018) 882	AAADT (2018) 870
AAADT (2043) 1014	AAADT (2043) 1001
DHV 120	DHV 118
D 51%	D 51%
DHV T% 8.0%	DHV T% 9.9%
AAADT T% 17.6%	AAADT T% 21.8%
V 70 mph	V 35 mph

STORM WATER PERMIT

Major Receiving Body of Water:
Area Disturbed:
Total Project Area:
Approx. Begin Lat,Long: 43.7200, -101.5417

Gross Length	45327.23 Feet	8.585 Miles
Length of Exceptions	485.54 Feet	0.092 Miles
Net Length	44841.69 Feet	8.493 Miles

Plotted From: TRPR14341

File: U:\v\proj\jac05hv\Title.dgn