

Inflow/Outflow Report

Selection Area Labor Market Size (All Jobs)

	2019	
	Count	Share
Employed in the Selection Area	80,032	100.0%
Living in the Selection Area	40,911	51.1%
Net Job Inflow (+) or Outflow (-)	39,121	-

In-Area Labor Force Efficiency (All Jobs)

	2019	
	Count	Share
Living in the Selection Area	40,911	100.0%
Living and Employed in the Selection Area	28,094	68.7%
Living in the Selection Area but Employed Outside	12,817	31.3%

In-Area Employment Efficiency (All Jobs)

	2019	
	Count	Share
Employed in the Selection Area	80,032	100.0%
Employed and Living in the Selection Area	28,094	35.1%
Employed in the Selection Area but Living Outside	51,938	64.9%

Outflow Job Characteristics (All Jobs)

	2019	
	Count	Share
External Jobs Filled by Residents	12,817	100.0%
Workers Aged 29 or younger	3,724	29.1%
Workers Aged 30 to 54	6,522	50.9%
Workers Aged 55 or older	2,571	20.1%
Workers Earning \$1,250 per month or less	3,450	26.9%
Workers Earning \$1,251 to \$3,333 per month	3,519	27.5%
Workers Earning More than \$3,333 per month	5,848	45.6%
Workers in the "Goods Producing" Industry Class	2,481	19.4%
Workers in the "Trade, Transportation, and Utilities" Industry Class	2,688	21.0%
Workers in the "All Other Services" Industry Class	7,648	59.7%

Inflow Job Characteristics (All Jobs)

	2019	
	Count	Share
Internal Jobs Filled by Outside Workers	51,938	100.0%
Workers Aged 29 or younger	11,189	21.5%
Workers Aged 30 to 54	27,937	53.8%
Workers Aged 55 or older	12,812	24.7%
Workers Earning \$1,250 per month or less	8,442	16.3%

Inflow Job Characteristics (All Jobs)

	2019	
	Count	Share
Workers Earning \$1,251 to \$3,333 per month	11,897	22.9%
Workers Earning More than \$3,333 per month	31,599	60.8%
Workers in the "Goods Producing" Industry Class	6,200	11.9%
Workers in the "Trade, Transportation, and Utilities" Industry Class	5,170	10.0%
Workers in the "All Other Services" Industry Class	40,568	78.1%

Interior Flow Job Characteristics (All Jobs)

	2019	
	Count	Share
Internal Jobs Filled by Residents	28,094	100.0%
Workers Aged 29 or younger	6,797	24.2%
Workers Aged 30 to 54	15,054	53.6%
Workers Aged 55 or older	6,243	22.2%
Workers Earning \$1,250 per month or less	4,684	16.7%
Workers Earning \$1,251 to \$3,333 per month	6,046	21.5%
Workers Earning More than \$3,333 per month	17,364	61.8%
Workers in the "Goods Producing" Industry Class	2,781	9.9%

Interior Flow Job Characteristics
(All Jobs)

	2019	
	Count	Share
Workers in the "Trade, Transportation, and Utilities" Industry Class	2,740	9.8%
Workers in the "All Other Services" Industry Class	22,573	80.3%

Report Settings

Analysis Type	Inflow/Outflow
Selection area as	N/A
Year(s)	2019
Job Type	All Jobs
Selection Area	Selection Area Freehand Drawing buffered 5.00 miles
Selected Census Blocks	1,666
Analysis Generation Date	02/13/2023 15:23 - OnTheMap 6.8.1
Code Revision	f9358819d46a60bb89052036516a1c8fe8bbbbeac
LODES Data Version	20211018_1647

Source: U.S. Census Bureau, OnTheMap Application and LEHD Origin-Destination Employment Statistics (Beginning of Quarter Employment, 2nd Quarter of 2002-2019).

Notes:

1. Race, Ethnicity, Educational Attainment, and Sex statistics are beta release results and are not available before 2009.
2. Educational Attainment is only produced for workers aged 30 and over.
3. Firm Age and Firm Size statistics are beta release results for All Private jobs and are not available before 2011.

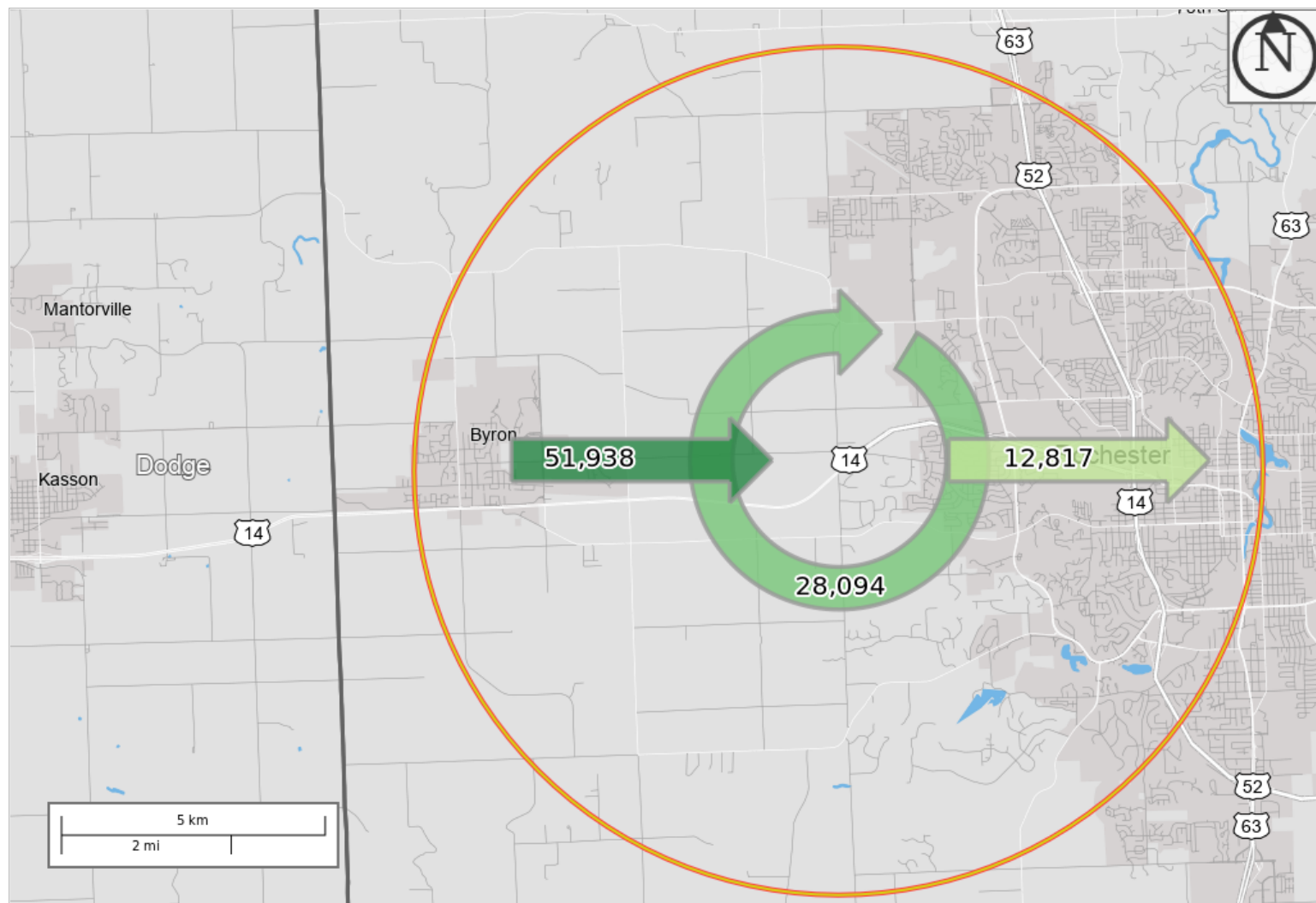
Inflow/Outflow Report

All Jobs for All Workers in 2019

Created by the U.S. Census Bureau's OnTheMap <https://onthemap.ces.census.gov> on 02/13/2023

Inflow/Outflow Counts of All Jobs for Selection Area in 2019

All Workers



Map Legend

Selection Areas

Analysis Selection

Inflow/Outflow

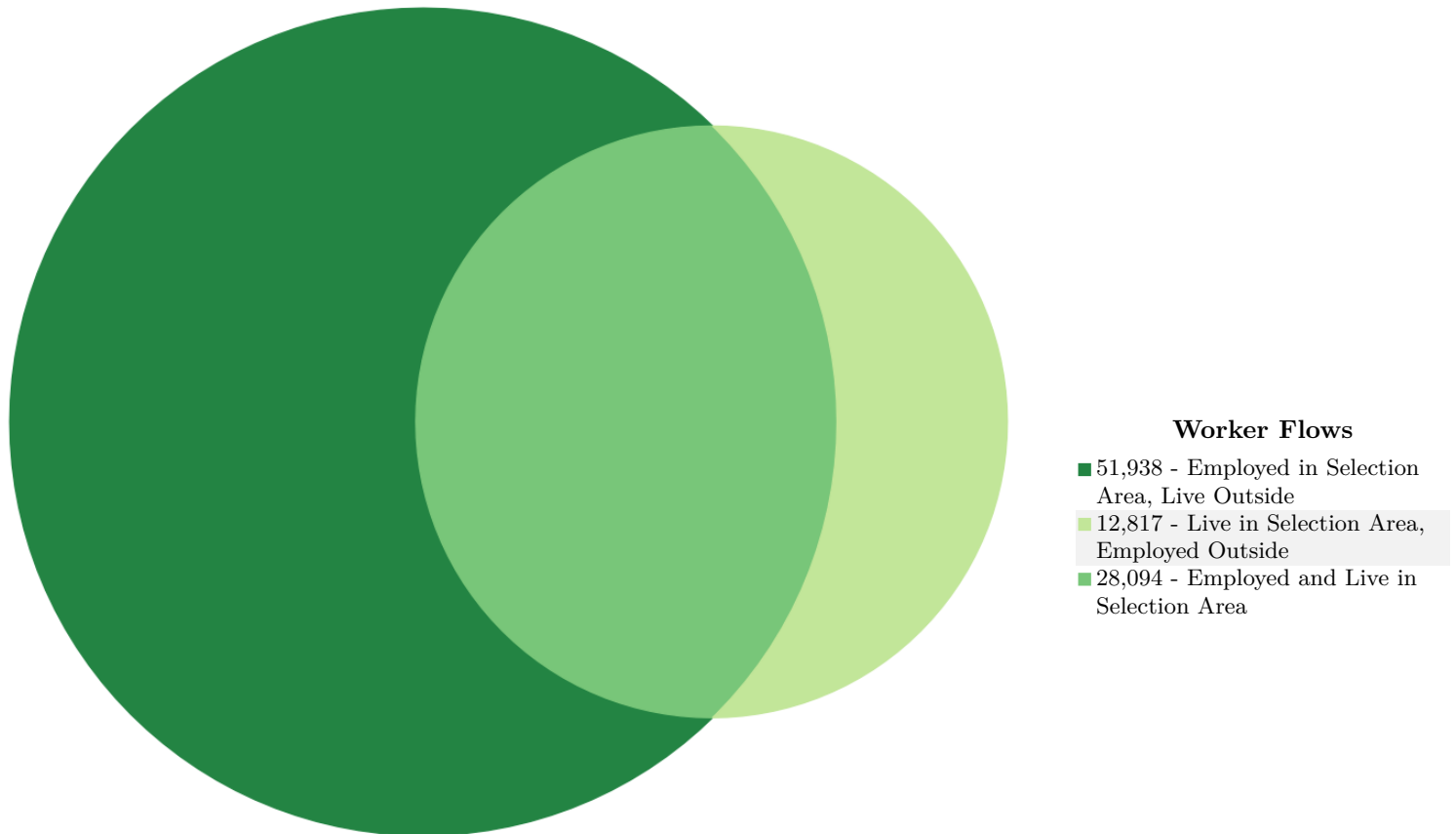
- Employed and Live in Selection Area
- Employed in Selection Area, Live Outside
- Live in Selection Area, Employed Outside

Note: Overlay arrows do not indicate directionality of worker flow between home and employment locations.



Inflow/Outflow Counts of All Jobs for Selection Area in 2019

All Workers



Inflow/Outflow Counts of All Jobs for Selection Area in 2019

All Workers

Worker Totals and Flows	2019	
	Count	Share
Employed in the Selection Area	80,032	100.0
Employed in the Selection Area but Living Outside	51,938	64.9
Employed and Living in the Selection Area	28,094	35.1
Living in the Selection Area	40,911	100.0
Living in the Selection Area but Employed Outside	12,817	31.3
Living and Employed in the Selection Area	28,094	68.7

Additional Information

Analysis Settings

Analysis Type	Inflow/Outflow
Selection area as	N/A
Year(s)	2019
Job Type	All Jobs
Selection Area	Selection Area Freehand Drawing buffered 5.00 miles
Selected Census Blocks	1,666
Analysis Generation Date	02/13/2023 15:23 - OnTheMap 6.8.1
Code Revision	f9358819d46a60bb89052036516a1c8fe8bbbbeac
LODES Data Version	20211018_1647

Data Sources

Source: U.S. Census Bureau, OnTheMap Application and LEHD Origin-Destination Employment Statistics (Beginning of Quarter Employment, 2nd Quarter of 2002-2019).

Notes

1. Race, Ethnicity, Educational Attainment, and Sex statistics are beta release results and are not available before 2009.
2. Educational Attainment is only produced for workers aged 30 and over.
3. Firm Age and Firm Size statistics are beta release results for All Private jobs and are not available before 2011.

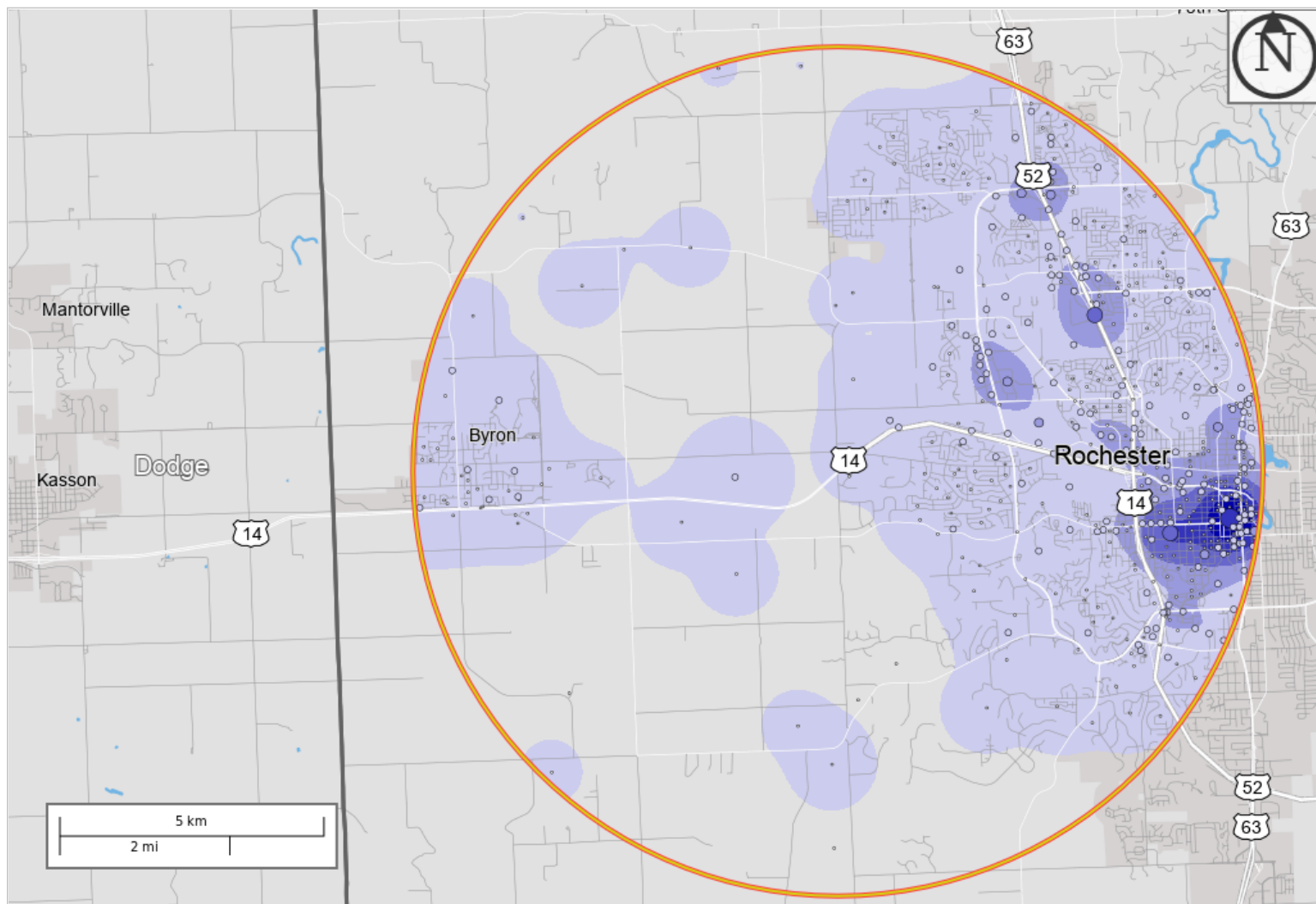
Work Area Profile Report

All Jobs for All Workers in 2019

Created by the U.S. Census Bureau's OnTheMap <https://onthemap.ces.census.gov> on 02/13/2023

Counts and Density of All Jobs in Work Selection Area in 2019

All Workers



Map Legend

Job Density [Jobs/Sq. Mile]

- 5 - 3,081
- 3,082 - 12,312
- 12,313 - 27,696
- 27,697 - 49,235
- 49,236 - 76,927

Job Count [Jobs/Census Block]

- 1 - 42
- 43 - 670
- 671 - 3,388
- 3,389 - 10,705
- 10,706 - 26,136

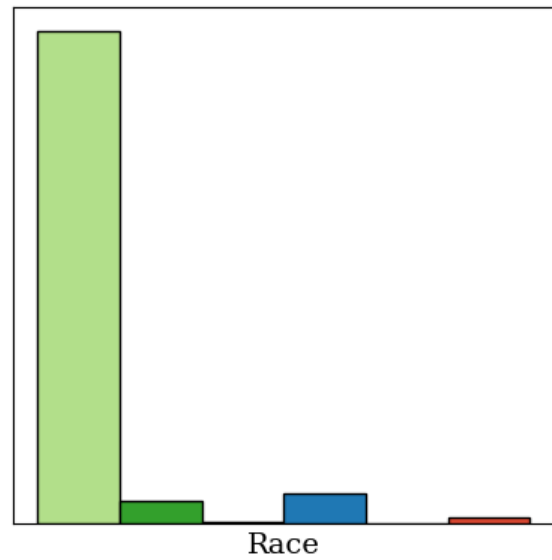
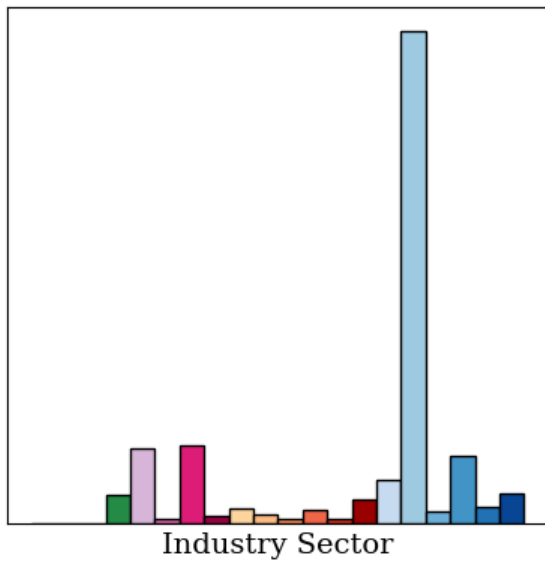
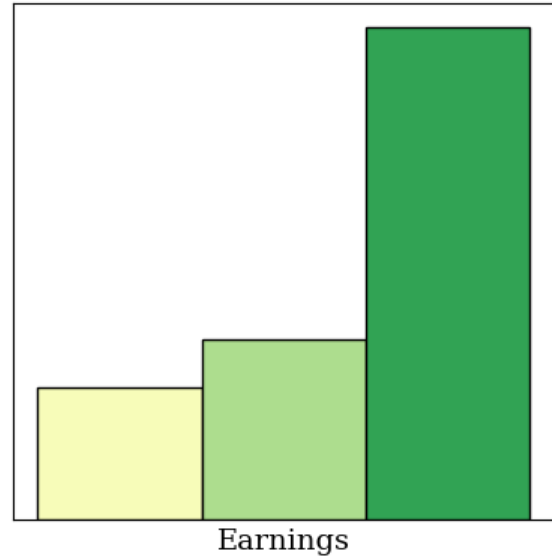
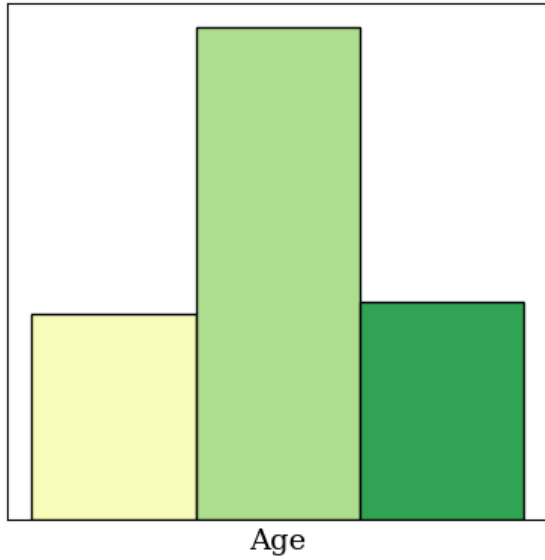
Selection Areas

- 📍 Analysis Selection



All Jobs for All Workers by Total in 2019

Employed in Selection Area



All Jobs for All Workers by Total in 2019

Employed in Selection Area

Total	2019	
	Count	Share
Total All Jobs	80,032	100.0

Total	2019	
	Count	Share
Total All Jobs	80,032	100.0

Additional Information

Analysis Settings

Analysis Type	Area Profile
Selection area as	Work
Year(s)	2019
Job Type	All Jobs
Labor Market Segment	All Workers
Selection Area	Selection Area Freehand Drawing buffered 5.00 miles
Selected Census Blocks	1,666
Analysis Generation Date	02/13/2023 15:18 - OnTheMap 6.8.1
Code Revision	f9358819d46a60bb89052036516a1c8fe8bbbbeac
LODES Data Version	20211018_1647

Data Sources

Source: U.S. Census Bureau, OnTheMap Application and LEHD Origin-Destination Employment Statistics (Beginning of Quarter Employment, 2nd Quarter of 2002-2019).

Notes

1. Race, Ethnicity, Educational Attainment, and Sex statistics are beta release results and are not available before 2009.
2. Educational Attainment is only produced for workers aged 30 and over.
3. Firm Age and Firm Size statistics are beta release results for All Private jobs and are not available before 2011.