
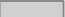

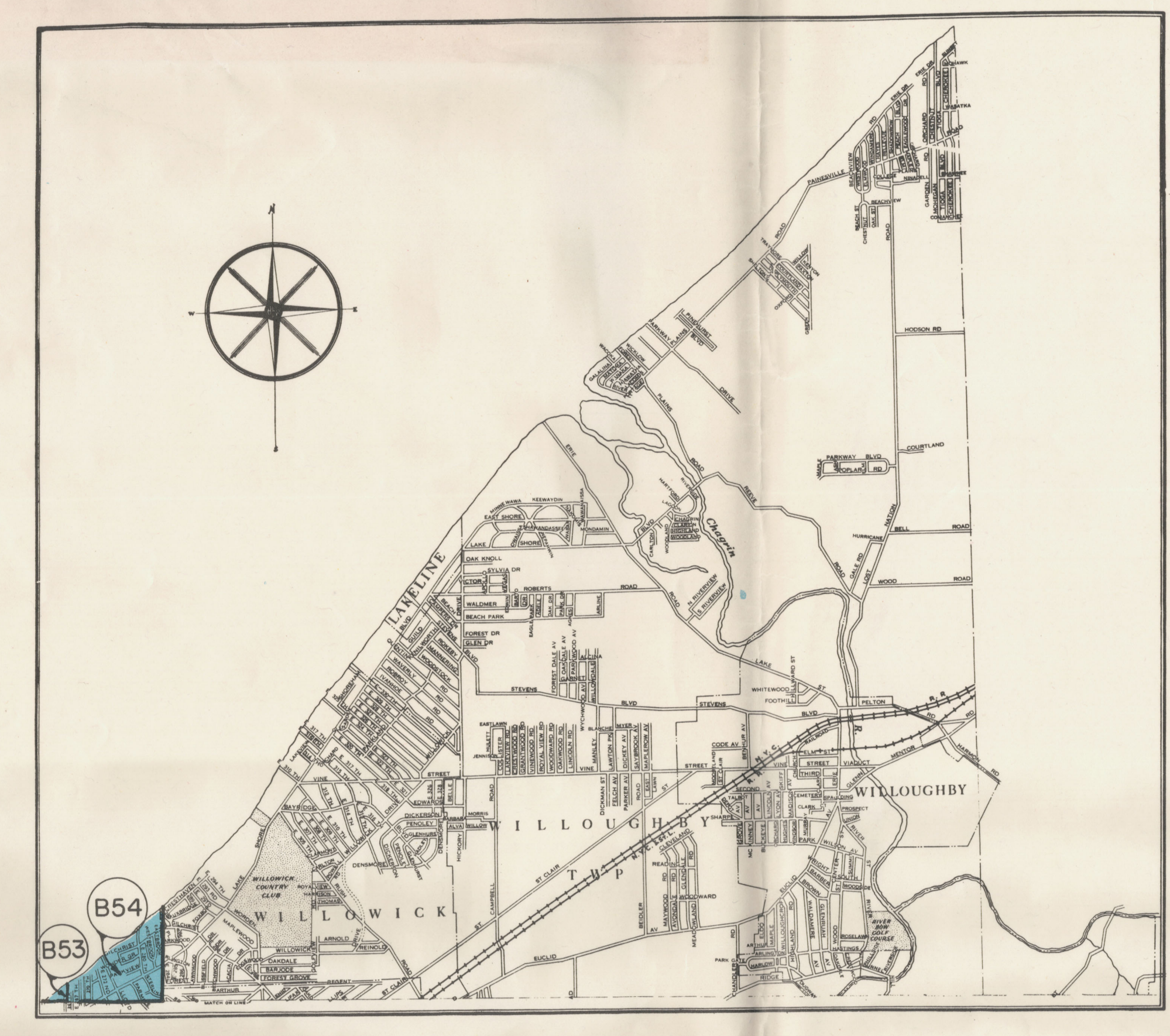
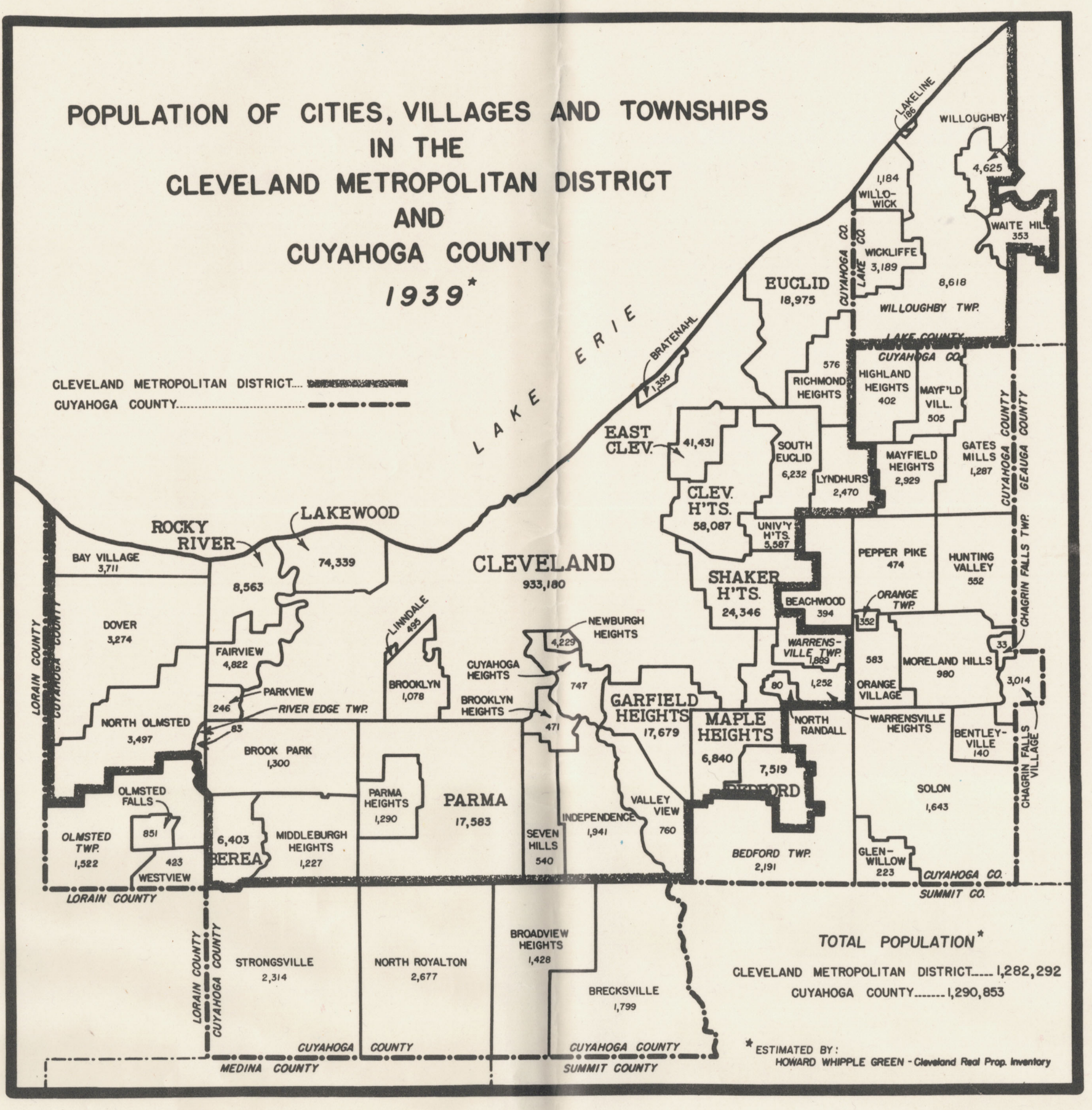
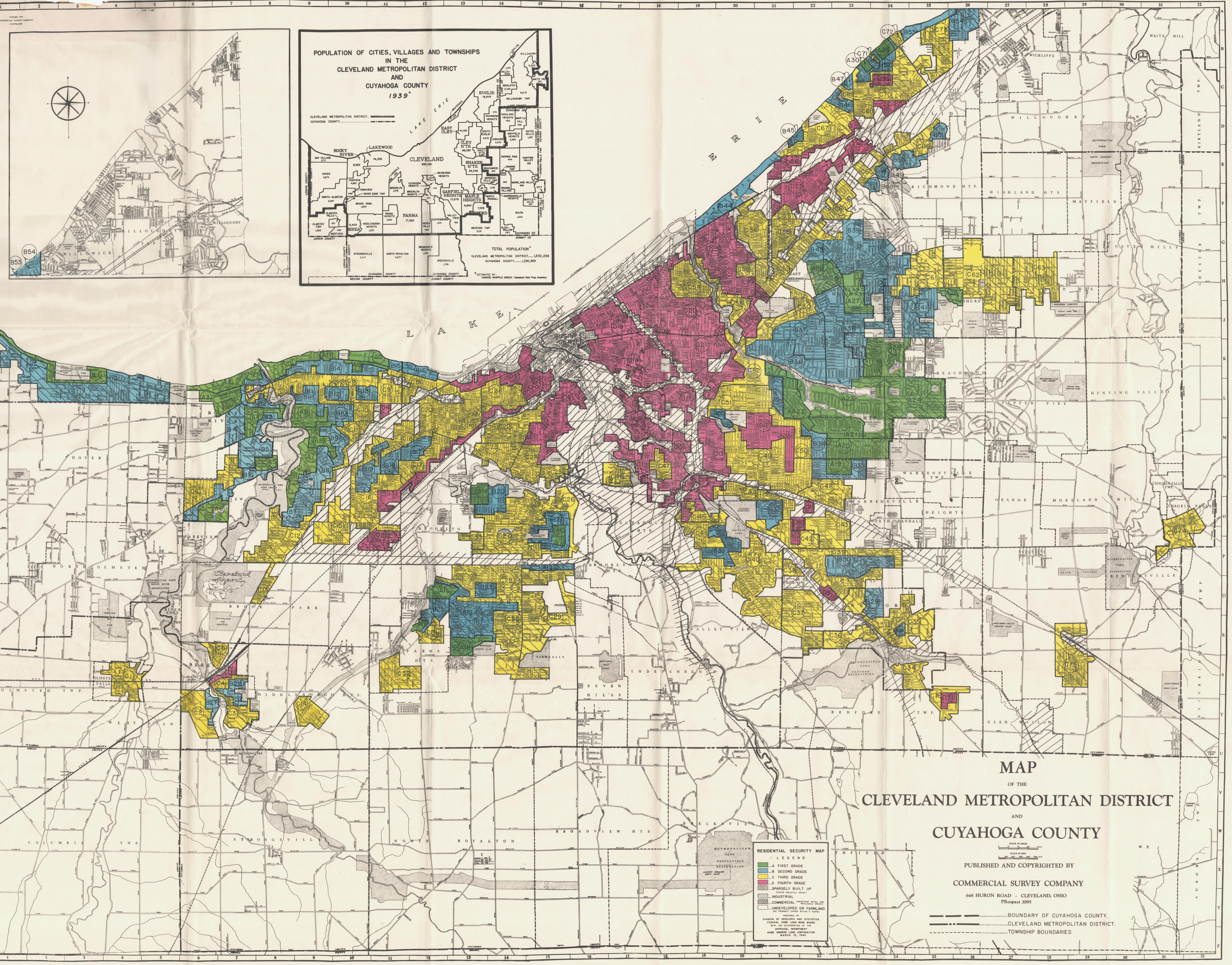


**MidTown-Hough
Connector Project**

-  Project Corridor
-  City of Cleveland
-  Cuyahoga County



MAP OF THE CLEVELAND METROPOLITAN DISTRICT AND CUYAHOGA COUNTY

**RESIDENTIAL SECURITY MAP
- LEGEND -**

- A FIRST GRADE
- B SECOND GRADE
- C THIRD GRADE
- D FOURTH GRADE
- SPARSELY BUILT UP
- INDUSTRIAL
- COMMERCIAL
- UNDEVELOPED OR FARMLAND

PRODUCED BY
DIVISION OF RESEARCH AND STATISTICS
FEDERAL HOME LOAN BOARD
WITH THE COOPERATION OF THE
APPRAISAL COMMITTEE
HOME LOAN GUARANTEE CORPORATION
MARCH 15, 1940

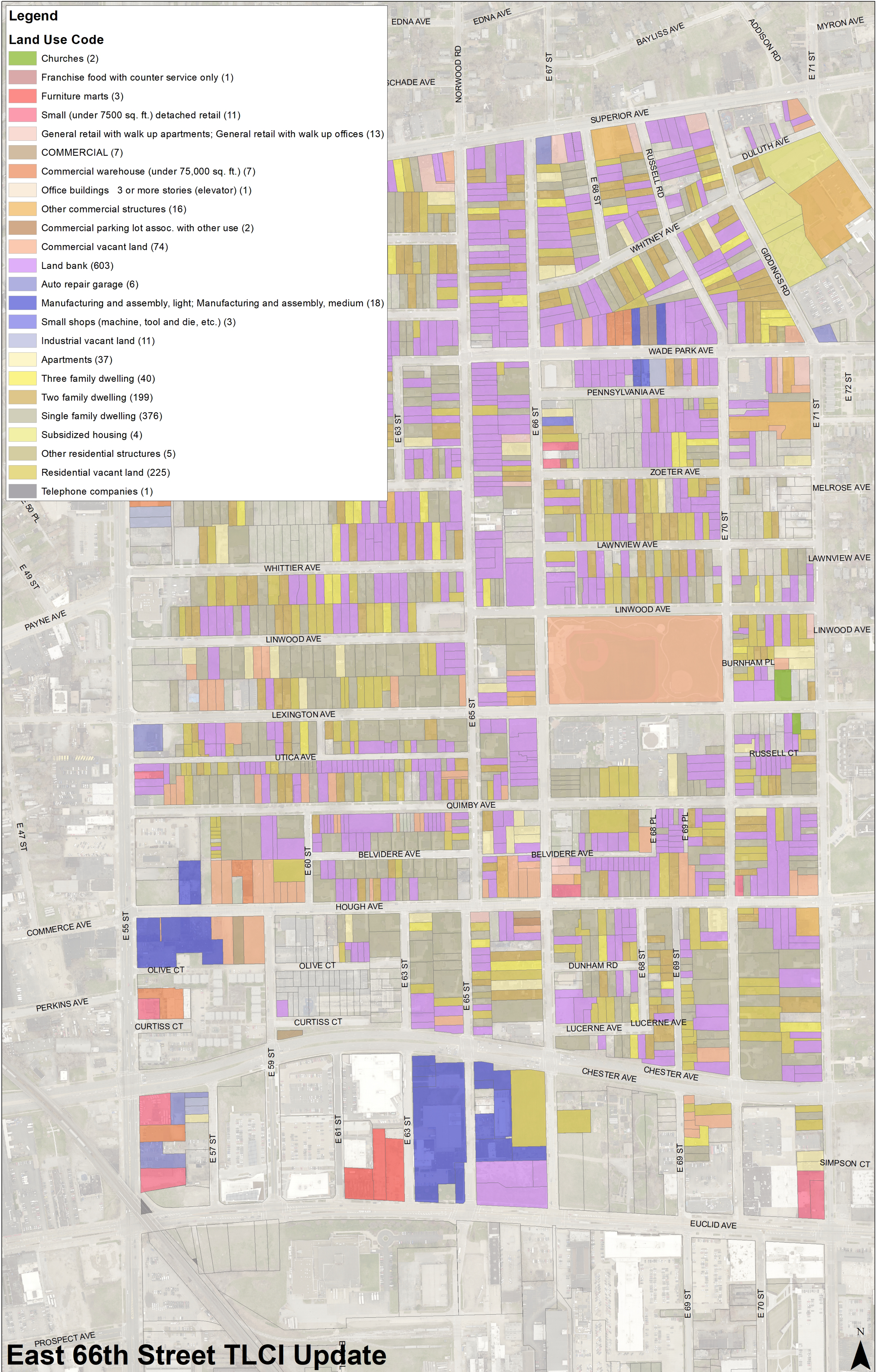
PUBLISHED AND COPYRIGHTED BY
COMMERCIAL SURVEY COMPANY
648 HURON ROAD - CLEVELAND, OHIO
PROspect 3995

.....BOUNDARY OF CUYAHOGA COUNTY.
.....CLEVELAND METROPOLITAN DISTRICT.
.....TOWNSHIP BOUNDARIES

Legend

Land Use Code

- Churches (2)
- Franchise food with counter service only (1)
- Furniture marts (3)
- Small (under 7500 sq. ft.) detached retail (11)
- General retail with walk up apartments; General retail with walk up offices (13)
- COMMERCIAL (7)
- Commercial warehouse (under 75,000 sq. ft.) (7)
- Office buildings 3 or more stories (elevator) (1)
- Other commercial structures (16)
- Commercial parking lot assoc. with other use (2)
- Commercial vacant land (74)
- Land bank (603)
- Auto repair garage (6)
- Manufacturing and assembly, light; Manufacturing and assembly, medium (18)
- Small shops (machine, tool and die, etc.) (3)
- Industrial vacant land (11)
- Apartments (37)
- Three family dwelling (40)
- Two family dwelling (199)
- Single family dwelling (376)
- Subsidized housing (4)
- Other residential structures (5)
- Residential vacant land (225)
- Telephone companies (1)



East 66th Street TLGI Update

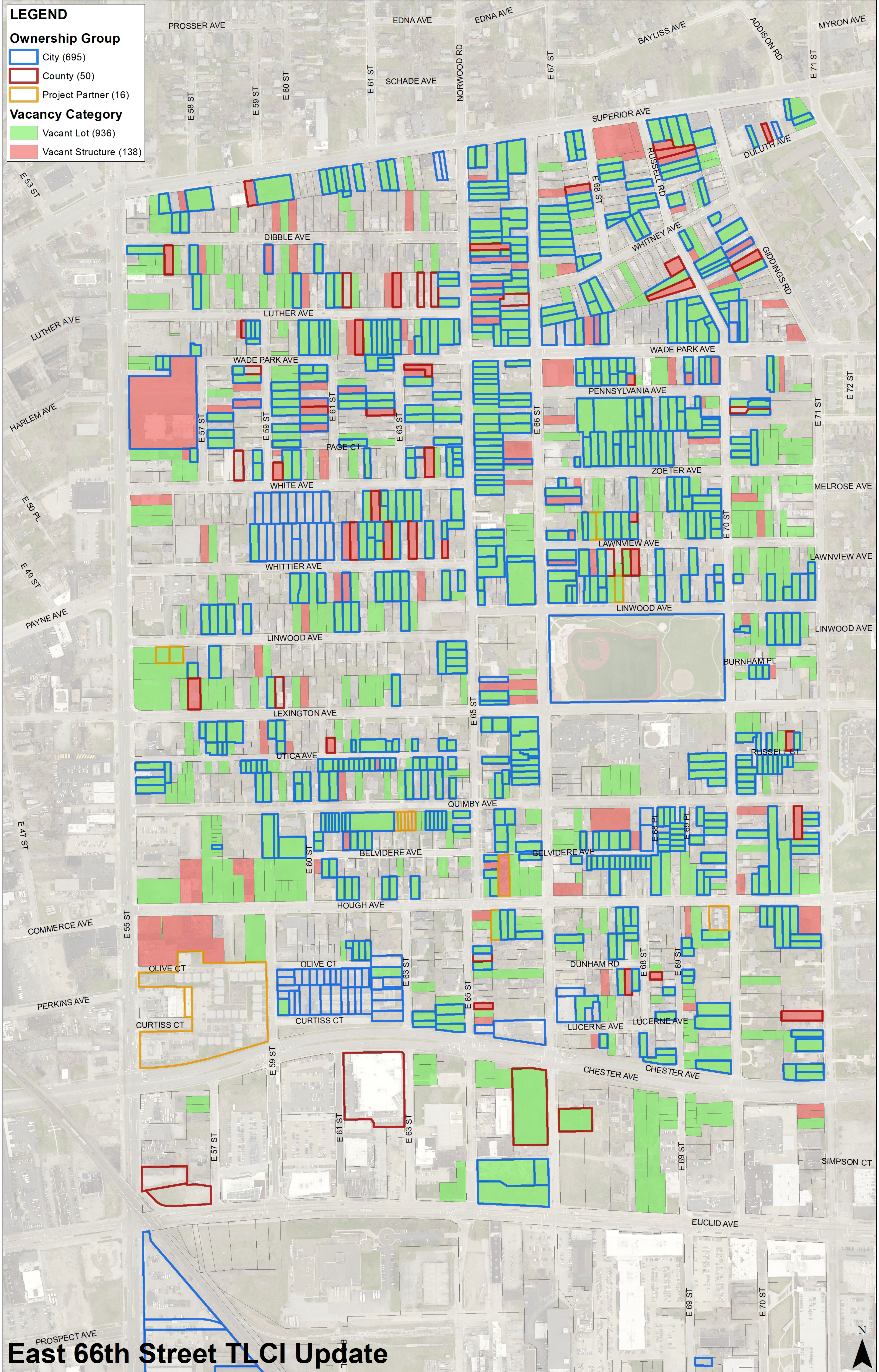
LEGEND

Ownership Group

- City (695)
- County (50)
- Project Partner (16)

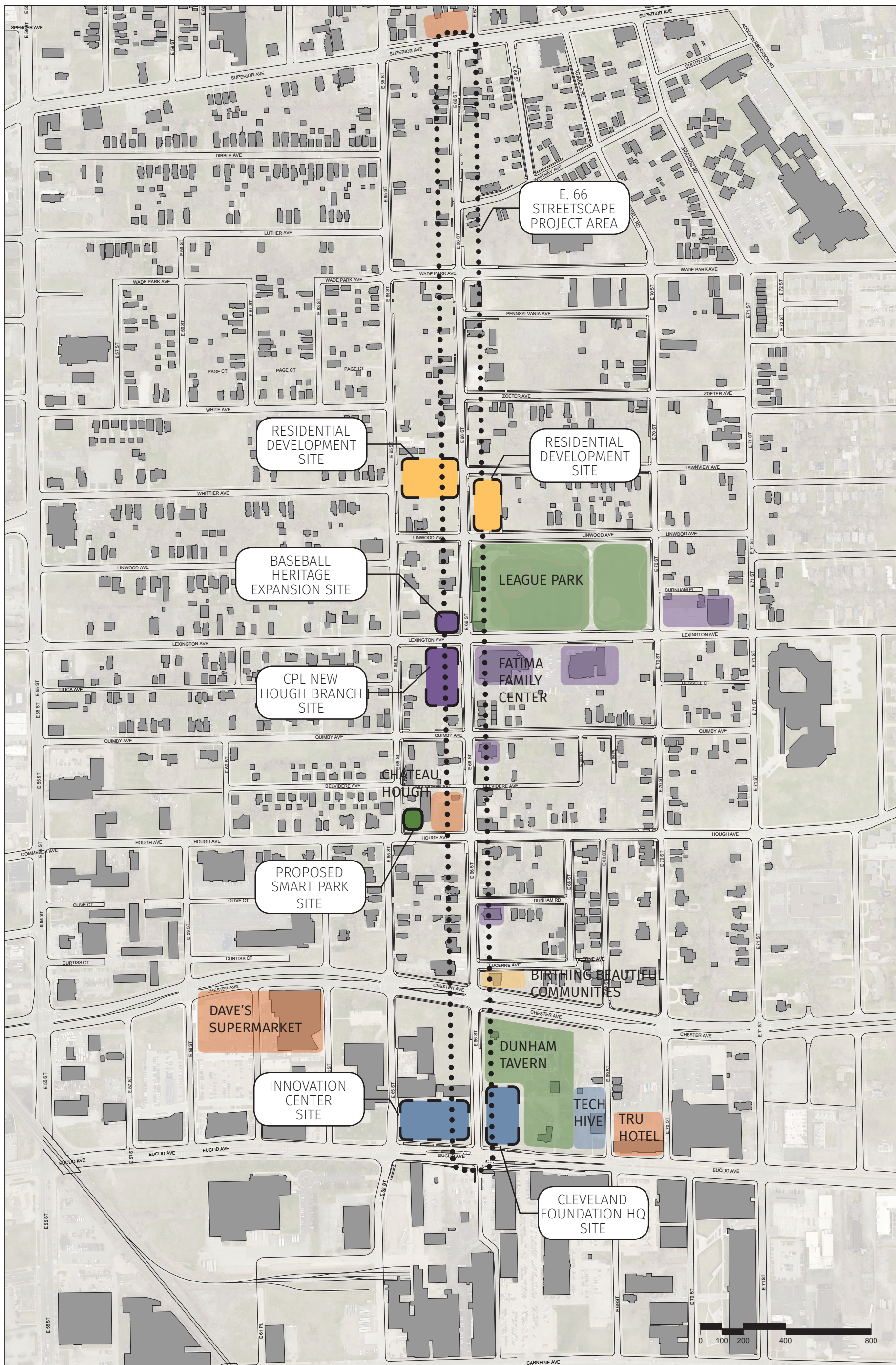
Vacancy Category

- Vacant Lot (936)
- Vacant Structure (138)



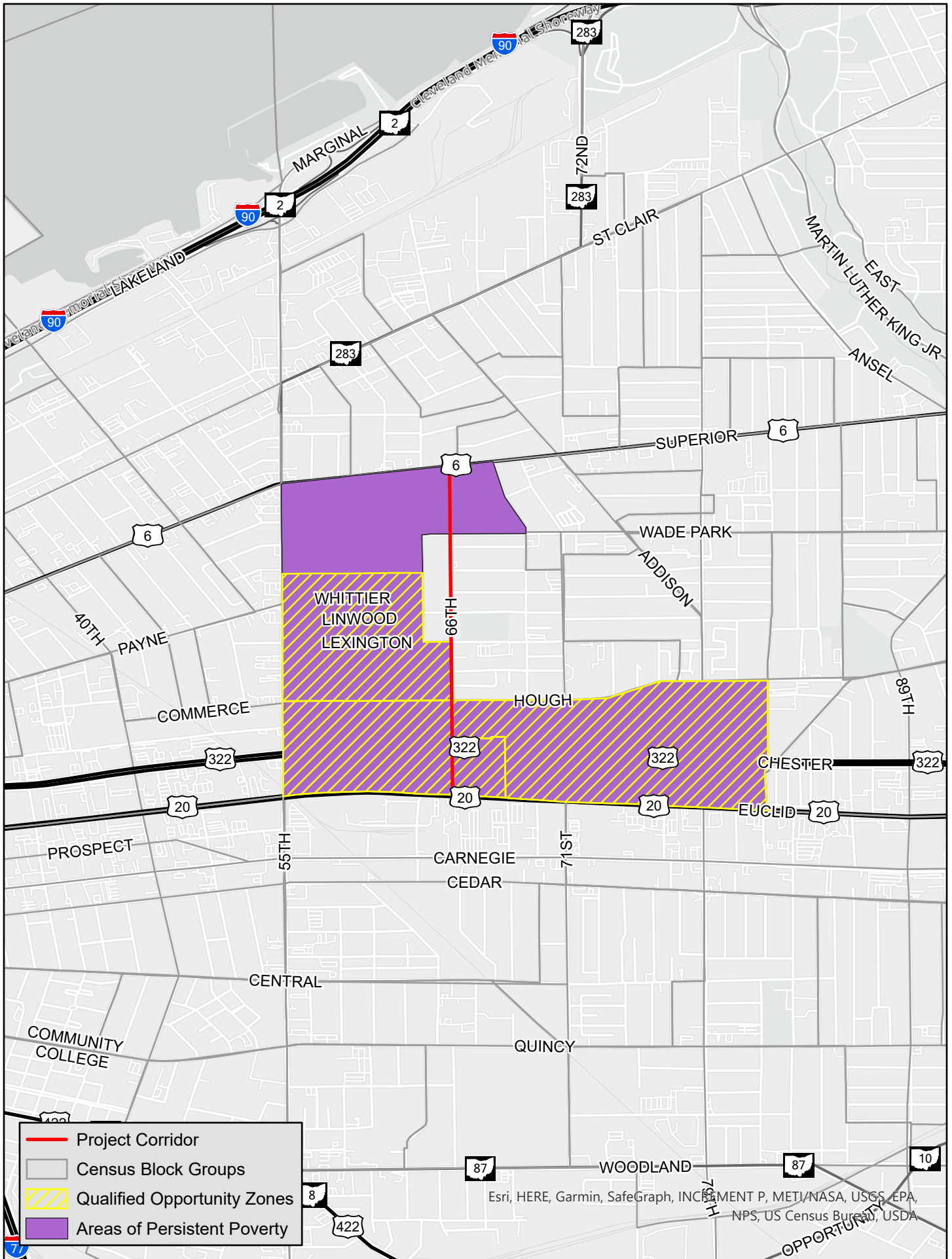
East 66th Street TLCI Update

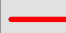


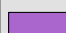




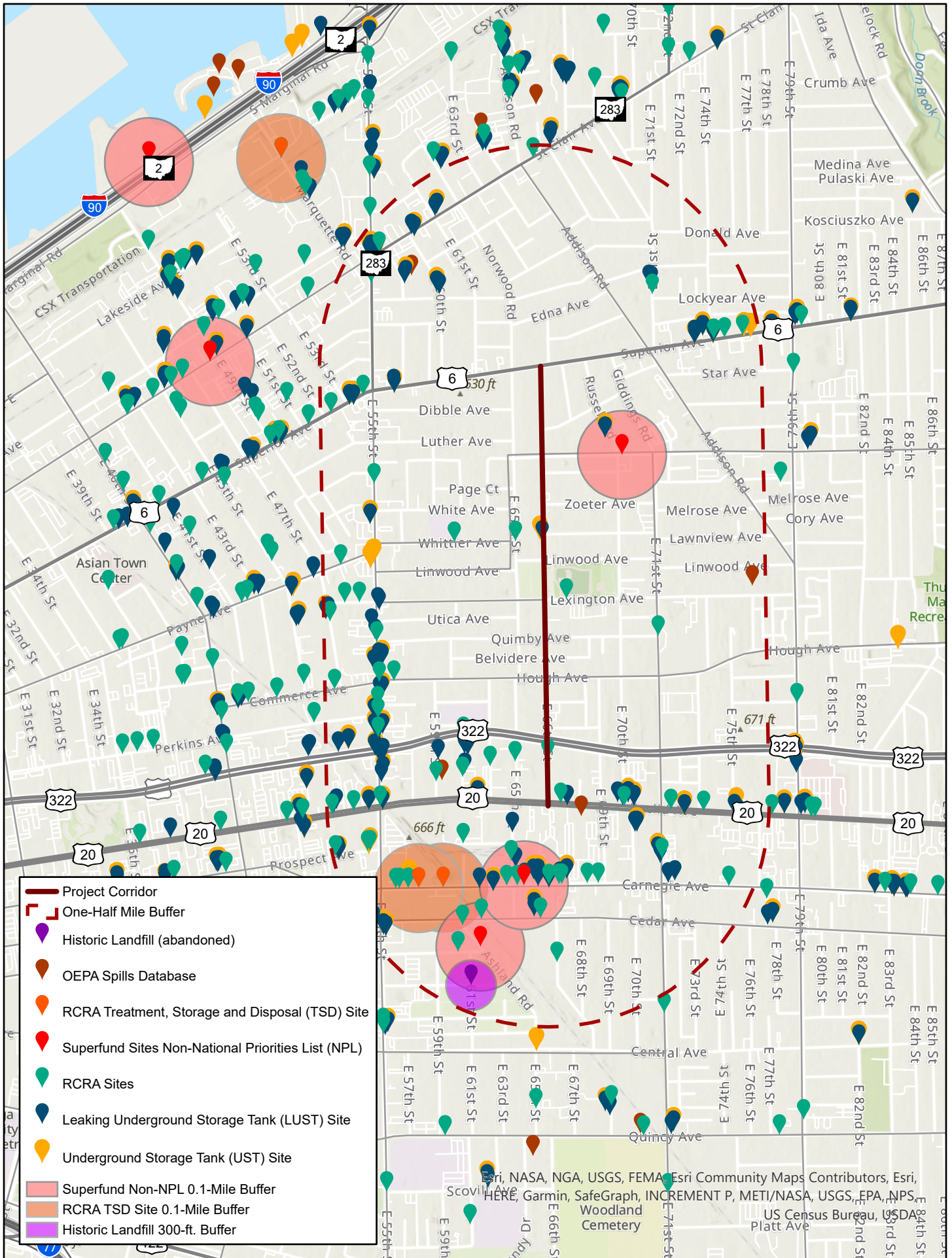
LEAGUE PARK DISTRICT CONTEXT & ASSETS MAP

Hough Residents
 Northeast Ohio Areawide Coordinating Agency
 The City of Cleveland
 MidTown Cleveland
 Twelve Literary Arts
 Lattimore Productions
City Architecture

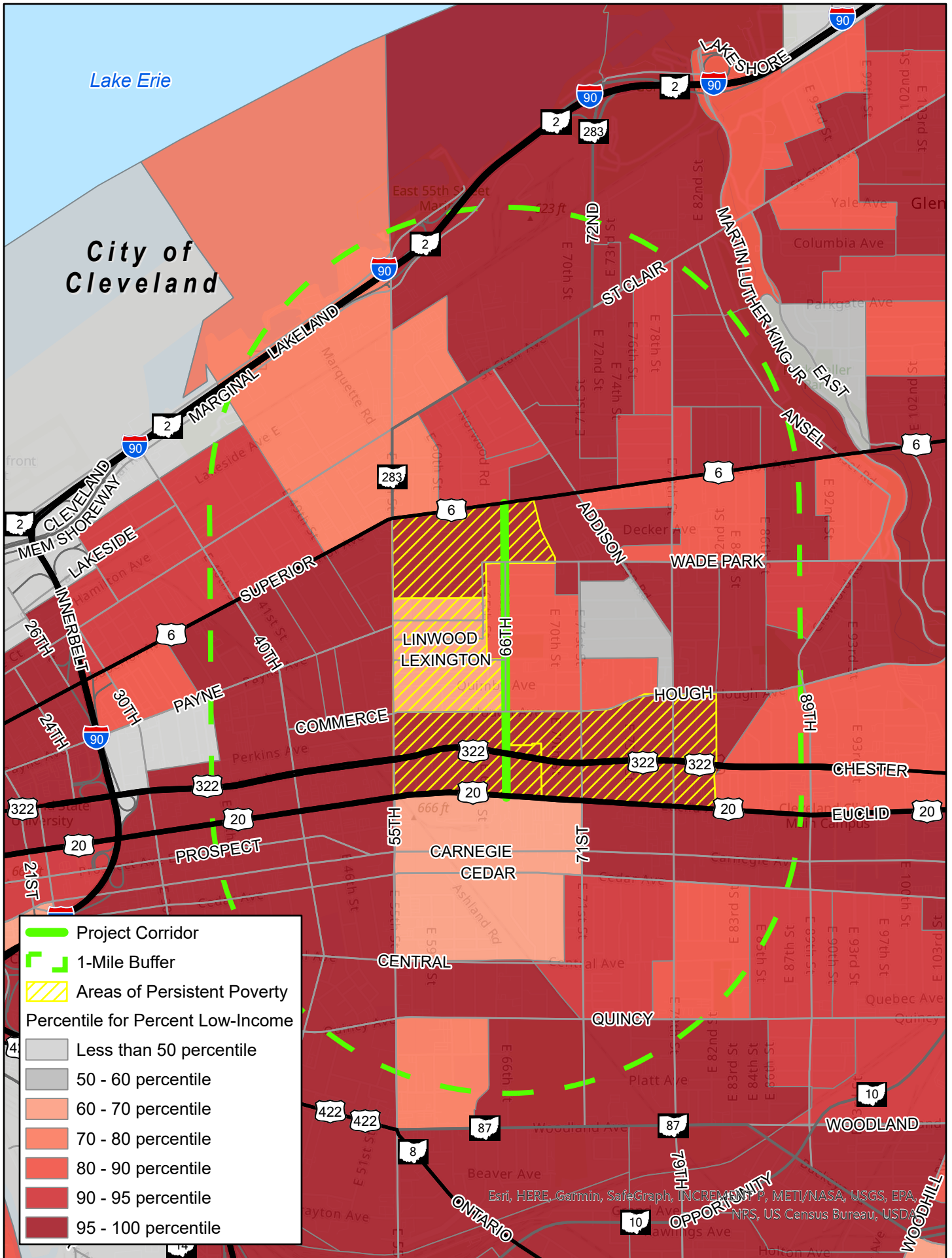


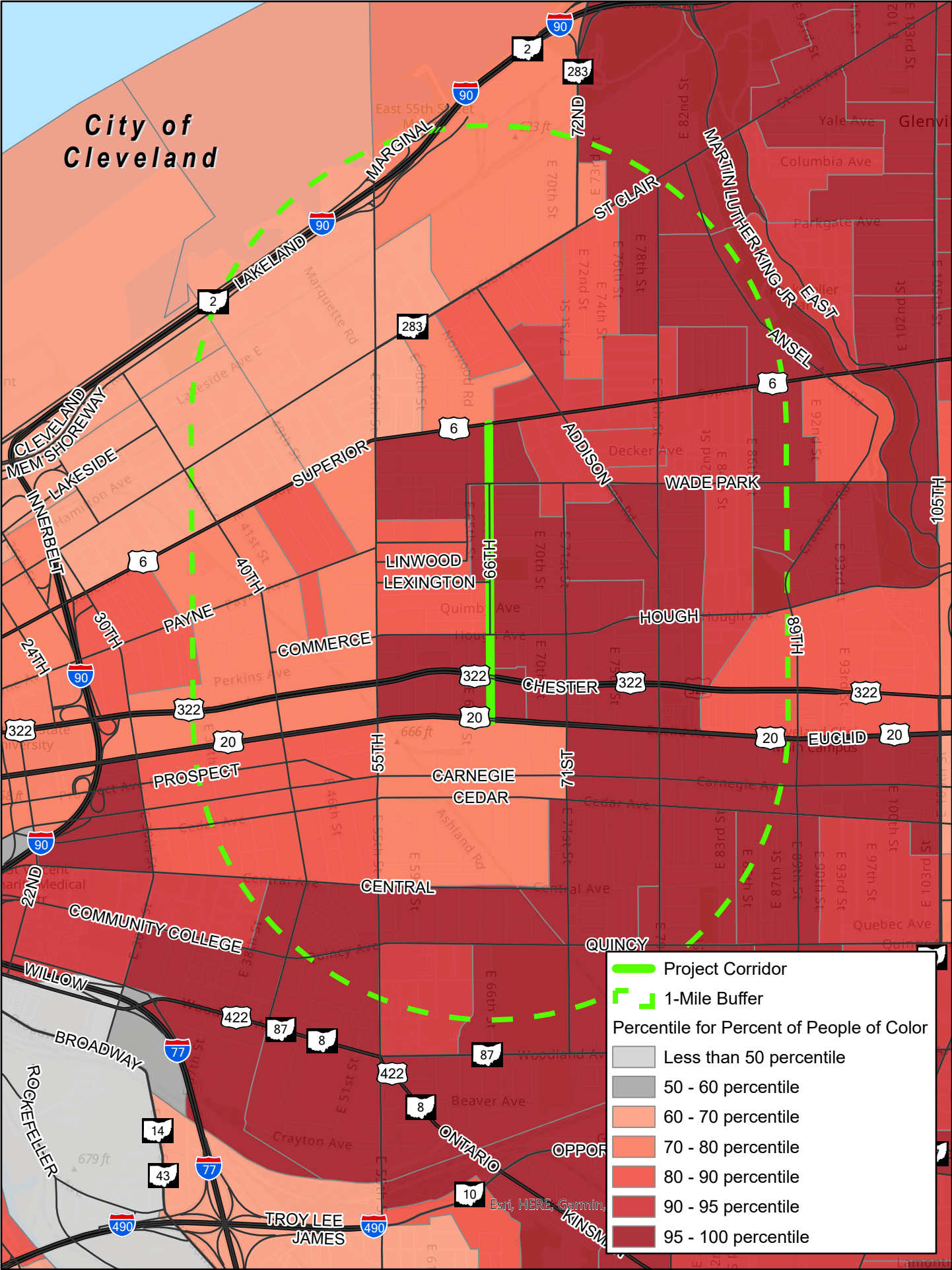
	Project Corridor
	Census Block Groups
	Qualified Opportunity Zones
	Areas of Persistent Poverty

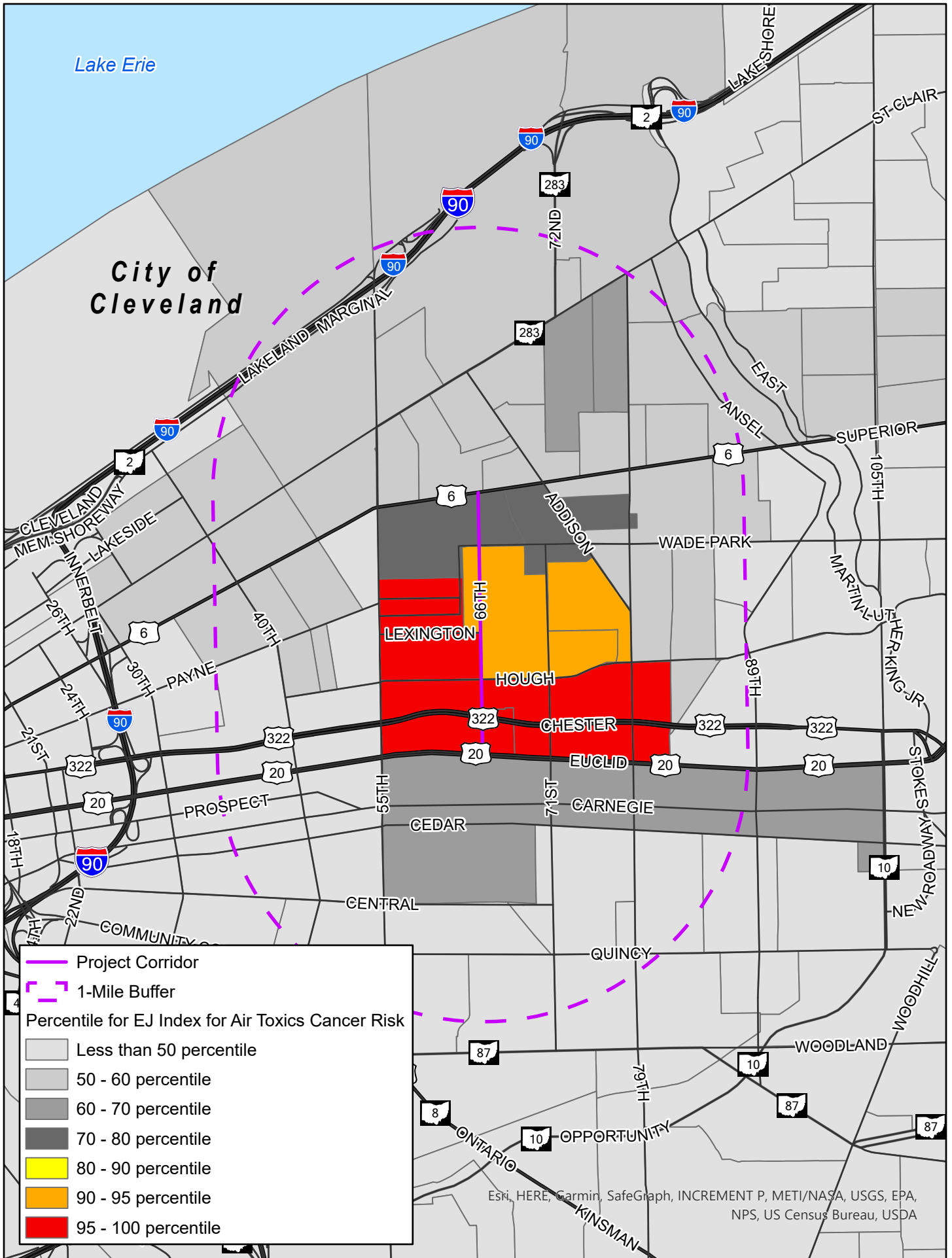
Esri, HERE, Garmin, SafeGraph, INC, ELEMENT P, METI/NASA, USGS, EPA, NPS, US Census Bureau, USDA



Esri, NASA, NGA, USGS, FEMA, Esri Community Maps Contributors, Esri, HERE, Garmin, SafeGraph, INCREMENT P, METI/NASA, USGS, EPA, NPS, Woodland Cemetery, US Census Bureau, USDA, Platt Ave

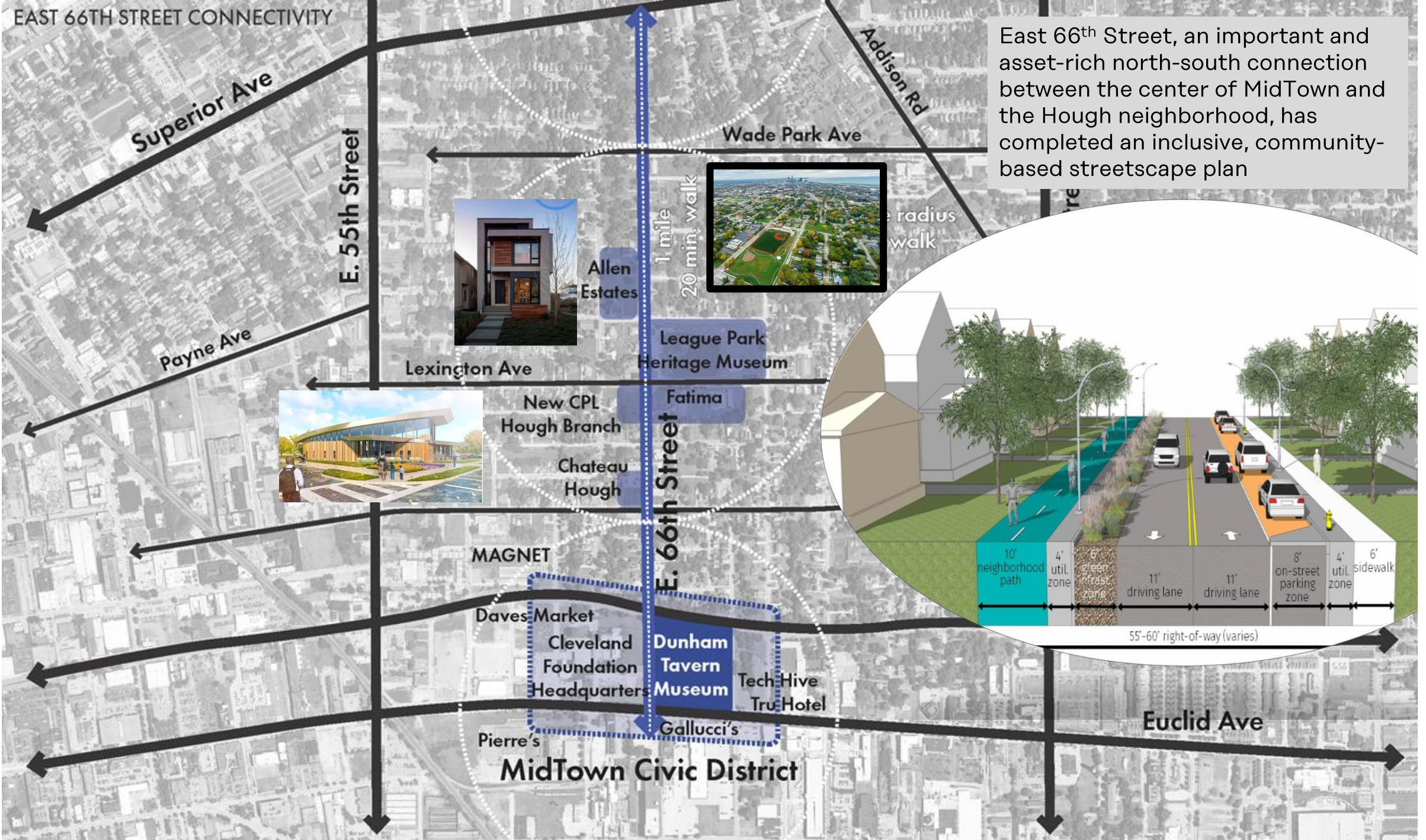






EAST 66TH STREET CONNECTIVITY

East 66th Street, an important and asset-rich north-south connection between the center of MidTown and the Hough neighborhood, has completed an inclusive, community-based streetscape plan



Allen Estates



League Park Heritage Museum



New CPL Hough Branch

Chateau Hough

Dunham Tavern Museum

Tech Hive Tru Hotel

MidTown Civic District

