

## Existing Transportation System

---

The Red Lake Nation’s roadway network consists of over 550 miles of highways, paved and unpaved roads, trails, bridges and air facilities on the official Tribal inventory (Figure 5).

### Functional Classification.

Functional class is *“the process by which streets and highways are grouped into classes, or systems, according to the character of service they are intended to provide”*. Basic to this process is the recognition that individual roads and streets do not serve travel independently in any major way. Rather, most travel involves movement through a network of roads.

It becomes necessary then to determine how this travel can be channelized within the network in a logical and efficient manner. Functional classification defines the nature of this channelization process by defining the part that any particular road or street should play in serving the flow of trips through a highway network.” (Source: Highway Functional Classification, FHWA, 1989)

The Red Lake Reservation road system is divided into seven major functional roadway classifications. According to the Bureau of Indian Affairs RIFDS system. The classes include:

<b>Class 1</b>	Major Arterial
<b>Class 2</b>	Rural Minor Arterial
<b>Class 3</b>	City Local
<b>Class 4</b>	Rural Major Collector
<b>Class 5</b>	Rural Local
<b>Class 6</b>	City Minor Arterial
<b>Class 7</b>	City Collector
<b>Other 0</b>	Logging roads, trails, etc.

The application of the classifications to the Red Lake Nation’s road system shows that the overwhelming majority of roads (40.98%) are ‘Rural Major Collector roads’, which serve as collectors to rural local roads and which serve more geographically isolated and/or remote destinations and/or venues not directly served by the higher order arterial system and may serve the more important intra-county and intra-tribal travel corridors.

Other classifications are lesser in terms of miles, with paved highways (Class 1), rural minor arterial (Class 2) making up approximately 31.48% collectively. Unclassified roads (such as logging roads and trails) make up nearly 20% of the system (19.74%). An outline is provided in the following table:

## Red Lake Transportation Facilities

<b>Table 6. Transportation Facilities</b>	<b>Total Miles</b>	<b>Percent</b>
Class 1	75.25	12.58%
Class 2	113.0	18.90%
Class 3	31.9	5.33%
Class 4	245.2	40.98%
Class 5	14.9	2.50%
Class 6	0.0	0%
Class 7	0.0	0%
Other (Class 0)	118.13	19.74%
Totals	598.38	-

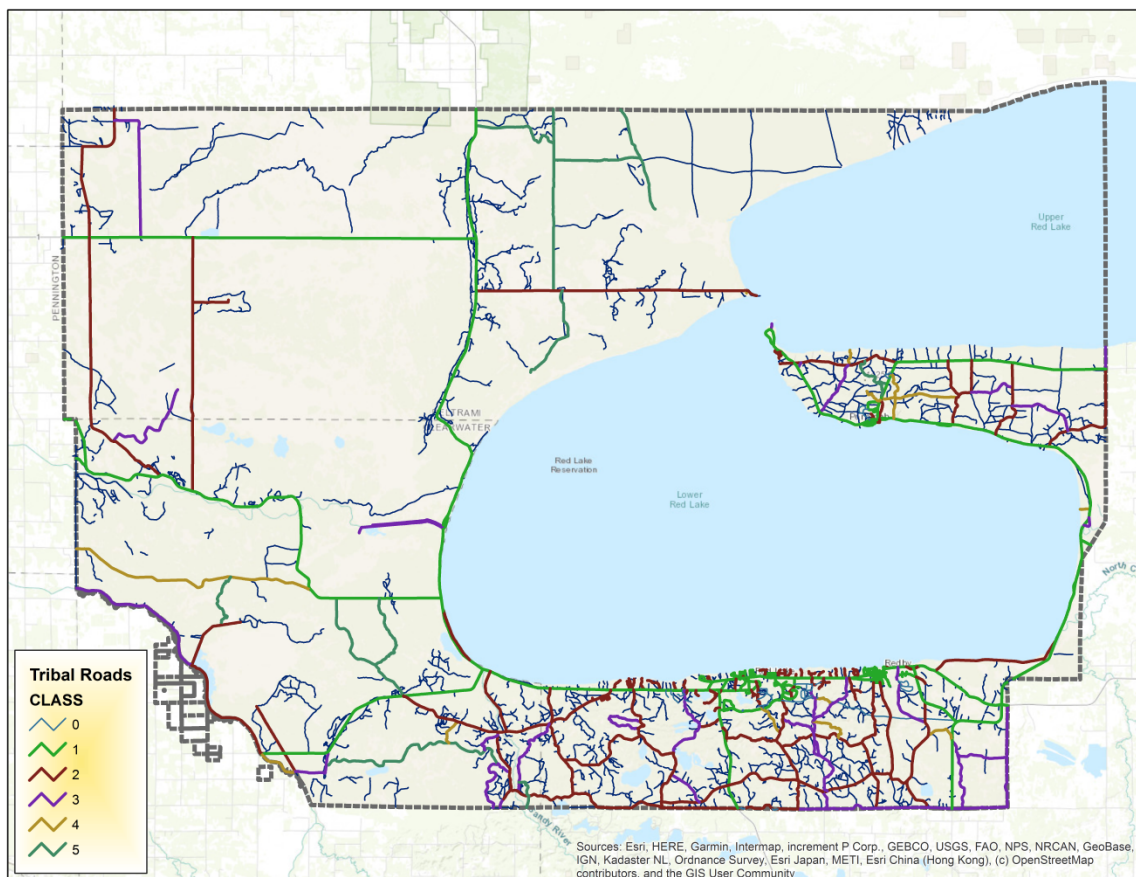


Figure 5. Red Lake Nation road classification System