

TH 8 (Chisago County) Preliminary Engineering  
Access Inventory

												Existing Public/Private Access Comparison																										
												MnDOT						Washington County***						Chisago County****														
Corridor Segment Number	Corridor Segment	From	To	Facility Type/Area	Functional Classification	Posted Speed Limit*	Existing ADT**	Roadway Cross Section	Segment Length (mi)	Public Access Points (includes start/end intersections)	Total Access Points (includes start/end intersections)	MnDOT Access Category	Primary Intersection	Secondary Intersection	Guideline (includes start/end intersections)	Existing Access per mile	Existing Total Access per Mile	Private Access Guidelines  100' Private Access Spacing Rural/Urbanizing (Type 1 & 2) *****	County Category	Primary Intersection	Secondary Intersection	Guideline (includes start/end intersections)	Existing Public Access per Mile	Existing Total Access Points per Mile	County Category	Primary Intersection	Secondary Intersection	Guideline	Existing Access Points per 1/4 mile	Compliance								
1	Lake Blvd (Hwy 8 )	I-35	Greenway Ave	Urbanizing	Principal Arterial	55	21900-22700	Divided/Undivided	1.863	5	6	4B	1/2 mile	1/4 mile	5 per mile	2.683843	3.220612		same as MnDOT	Principal Arterial	1/2 mile	1/4 mile	1/4 mile	5 per mile	2.864157	11.04746	1/2 mile	1/4 mile	5 per mile	2.531646	6.329114	10.25641	10.25641					
2	Lake Blvd (Hwy 8 )	Greenway Ave	Pioneer Rd/Green Lake Trail	Rural	Principal Arterial	55	20600	Undivided	2.444	7	27	4A	1 mile	1/2 mile	3 per mile	2.864157	11.04746																	1/2 mile	1/4 mile	5 per mile	2.864157119	11.04746318
3	Lake Blvd (Hwy 8 )	Pioneer Rd/Green Lake Trail	Deer Garden Ln	Rural	Principal Arterial	55	14500	Undivided	3.95	10	25	4A	1 mile	1/2 mile	3 per mile	2.531646	6.329114																	1/2 mile	1/4 mile	5 per mile	2.53164557	6.329113924
4	Lake Blvd (Hwy 8 )	Deer Garden Ln	Kamel Ave	Urbanizing	Principal Arterial	55	17700	Divided	0.195	2	2	4B	1/2 mile	1/4 mile	5 per mile	10.25641	10.25641	same as MnDOT																				

Notes:  
\*Speed limit from MnDOT basemap  
\*\*AADT from the MnDOT Traffic Data Map, 2017  
\*\*\*Washington County Guidelines from 2040 Draft  
\*\*\*\*Chisago County did not have Guidelines in their 2040 Comp Plan  
\*\*\*\*\* Private accesses categorized as Access Type 1 and Type 2 (serving less than 10 or fewer lots, fewer than 100 trips per day). Potential private businesses with higher trip generations (above 100) in the summer, require 495' between driveways.  
Segments not in Washington County  
Exceeds Private Access Guidelines

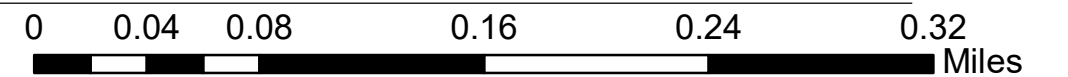


L:\Projects\12151\mxd\190328\_TH8\_AccessInventory.mxd



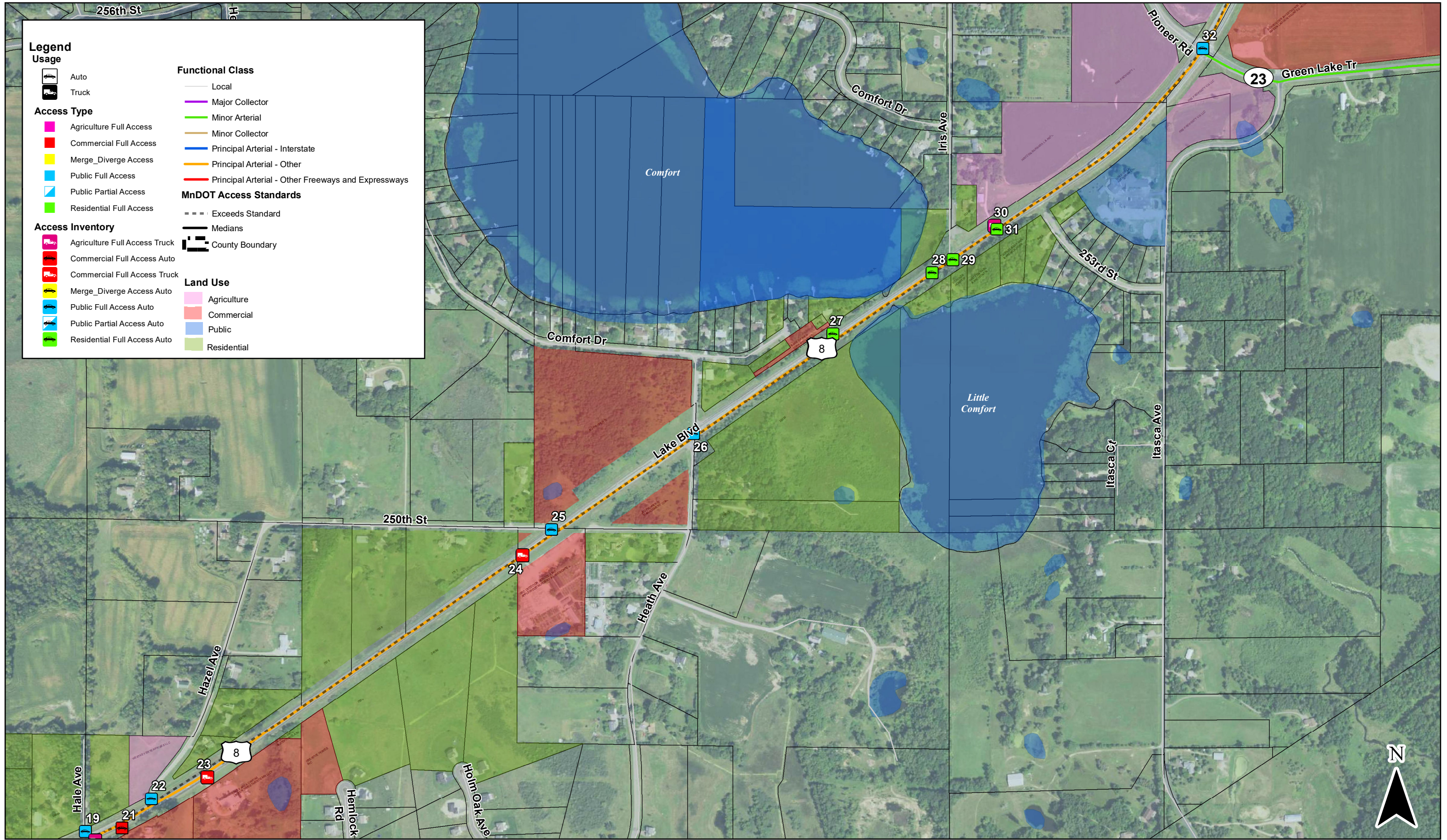
### Access Inventory Map for TH 8 from Greenway Ave to Hazel Ave

US 8 Predesign/EA. Chisago  
Chisago County



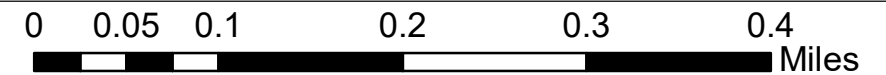


L:\Projects\12151\mxd\190328\_TH8\_AccessInventory.mxd



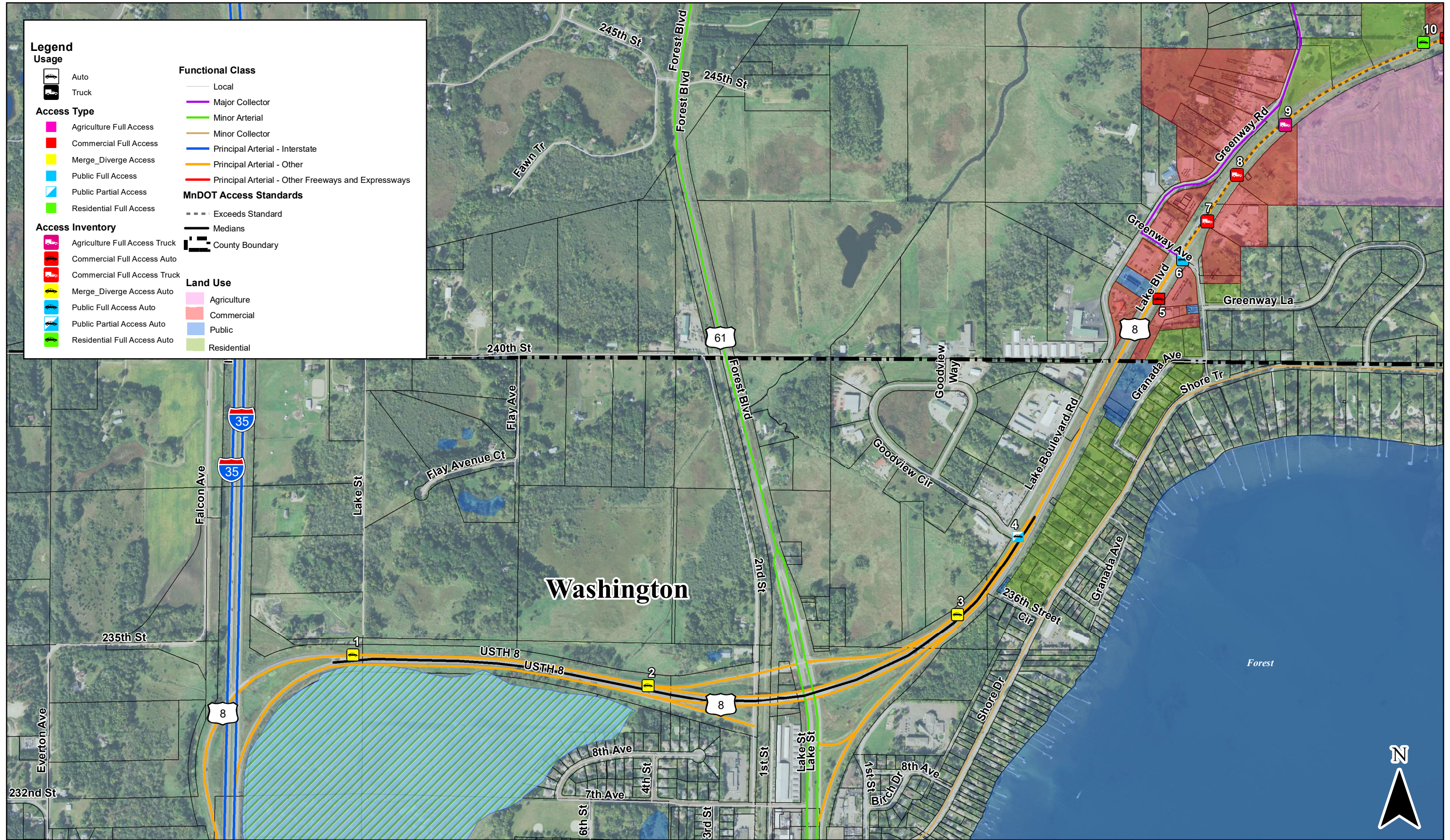
# Access Inventory Map for TH 8 from Hazel Ave to Pioneer Rd

US 8 Predesign/EA. Chisago  
Chisago County



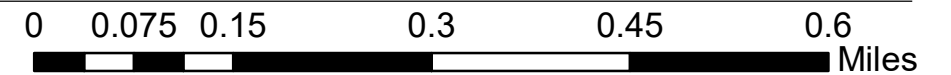


L:\Projects\12151\mxd\190328\_TH8\_AccessInventory.mxd

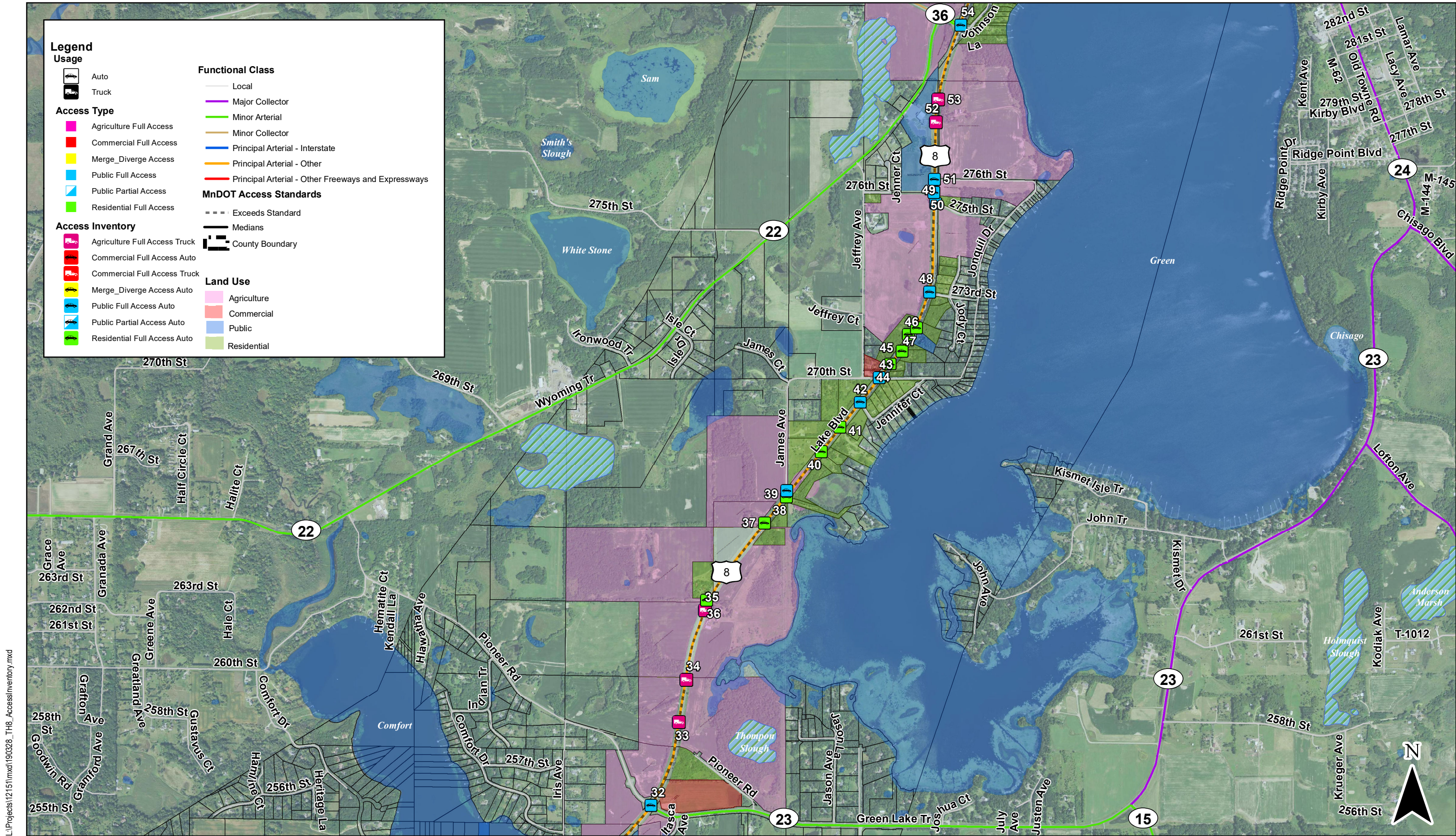


# Access Inventory Map for TH 8 from I35 to Greenway Ave

US 8 Predesign/EA. Chisago  
Chisago County







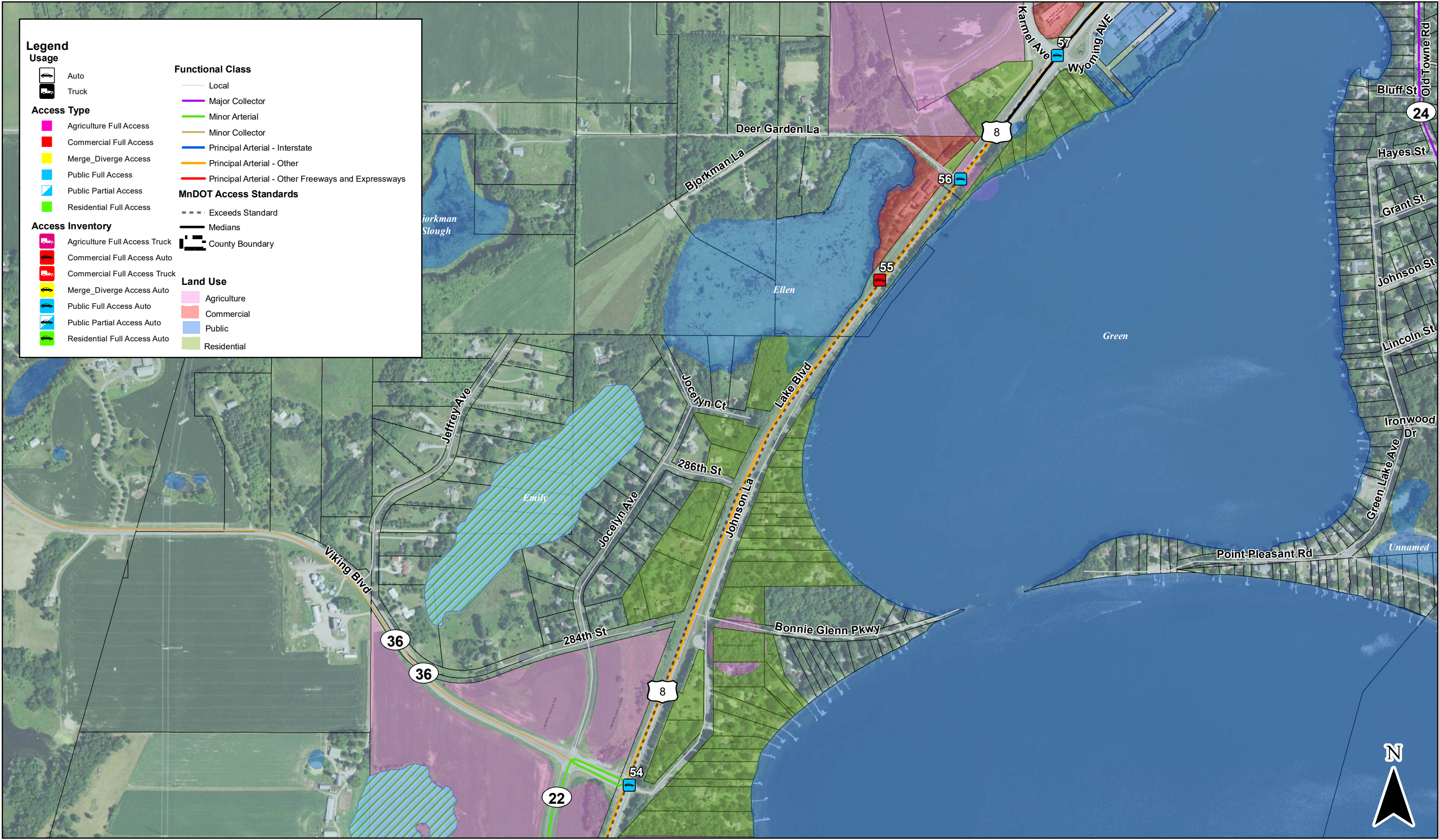
## Access Inventory Map for TH 8 from Pioneer Rd to Viking Blvd

US 8 Predesign/EA. Chisago  
Chisago County

0 0.175 0.35 0.7 1.05 1.4 Miles



L:\Projects\12151\mxd\190328\_TH8\_AccessInventory.mxd



**Access Inventory Map for TH 8 from Viking Blvd to Karmel Ave**

US 8 Predesign/EA. Chisago  
Chisago County

