



EJScreen Community Report

This report provides environmental and socioeconomic information for user-defined areas, and combines that data into environmental justice and supplemental indexes.

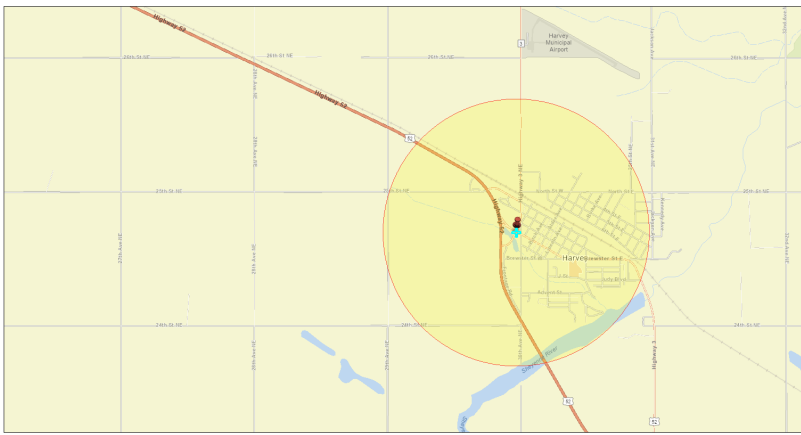
Wells County, ND

1 mile Ring Centered at 47.770541,-99.941597

Population: 1,637

Area in square miles: 3.14

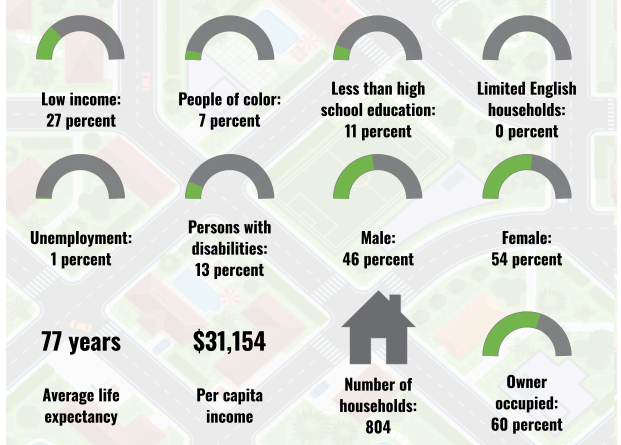
A3 Landscape



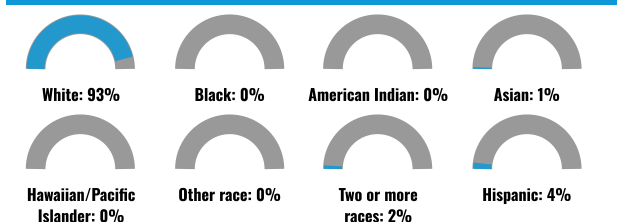
April 27, 2024
US 52 & ND 3 Intersection

1.36, 112
0 0.3 0.6 1.2 mi
0 0.5 1 2 km
State of North Dakota, East, North, Center, South, Southwest, Northwest, NE, N, NW, W, SW, S, SE, E, S.E., S.W., W.E., W.S., W.S.E., W.S.W., E.N., E.N.E., E.N.W., E.S., E.S.E., E.S.W., E.W., E.W.E., E.W.S., E.W.S.E., E.W.S.W., S.E., S.E.E., S.E.W., S.W., S.W.E., S.W.S., S.W.S.E., S.W.S.W., W.E., W.E.E., W.E.W., W.S., W.S.E., W.S.W., W.W., W.W.E., W.W.S., W.W.S.E., W.W.S.W., S.E., S.E.E., S.E.W., S.W., S.W.E., S.W.S., S.W.S.E., S.W.S.W., W.E., W.E.E., W.E.W., W.S., W.S.E., W.S.W., W.W., W.W.E., W.W.S., W.W.S.E., W.W.S.W.

COMMUNITY INFORMATION



BREAKDOWN BY RACE



BREAKDOWN BY AGE



LIMITED ENGLISH SPEAKING BREAKDOWN



LANGUAGES SPOKEN AT HOME

LANGUAGE	PERCENT
No language data available.	

Notes: Numbers may not sum to totals due to rounding. Hispanic population can be of any race. Source: U.S. Census Bureau, American Community Survey (ACS) 2017-2021. Life expectancy data comes from the Centers for Disease Control.

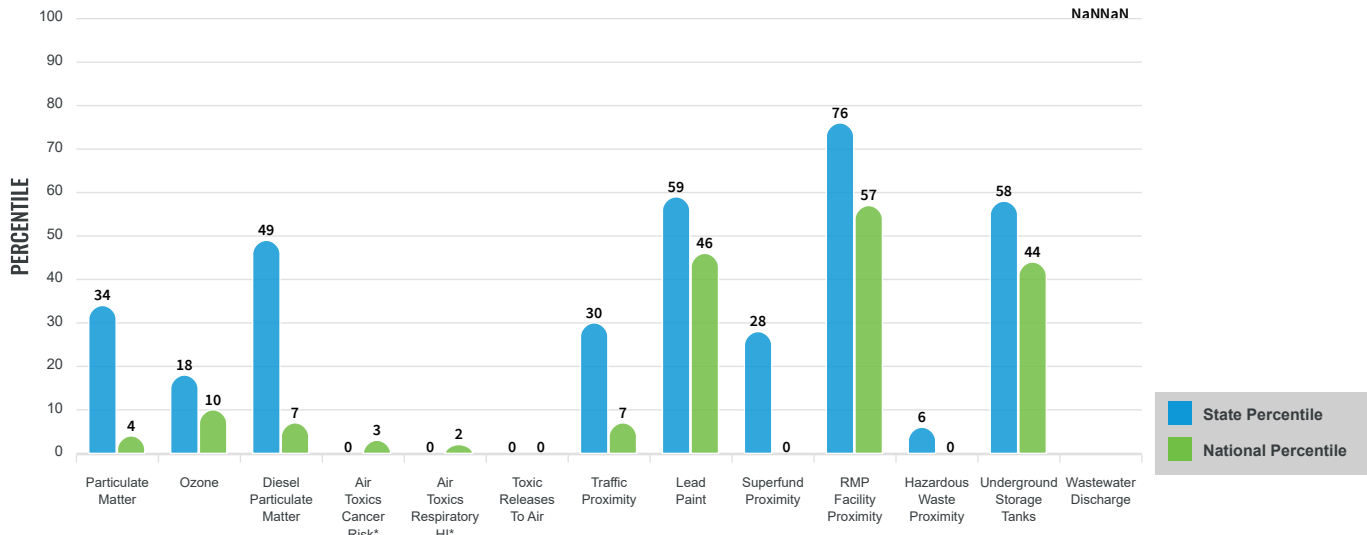
Environmental Justice & Supplemental Indexes

The environmental justice and supplemental indexes are a combination of environmental and socioeconomic information. There are thirteen EJ indexes and supplemental indexes in EJScreen reflecting the 13 environmental indicators. The indexes for a selected area are compared to those for all other locations in the state or nation. For more information and calculation details on the EJ and supplemental indexes, please visit the [EJScreen website](#).

EJ INDEXES

The EJ indexes help users screen for potential EJ concerns. To do this, the EJ index combines data on low income and people of color populations with a single environmental indicator.

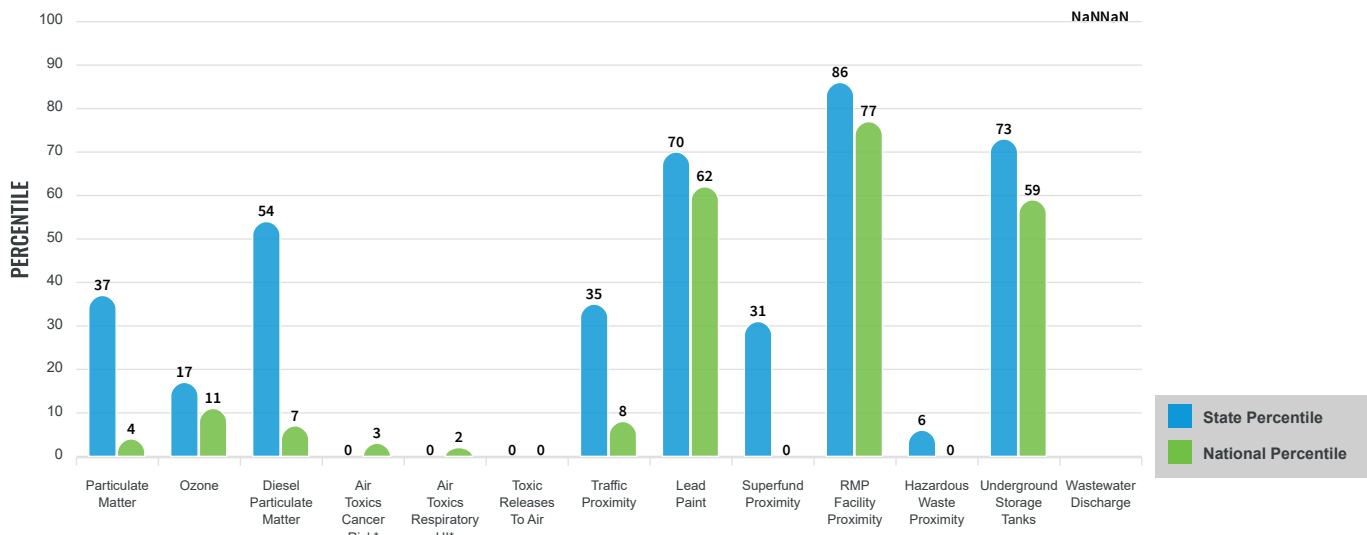
EJ INDEXES FOR THE SELECTED LOCATION



SUPPLEMENTAL INDEXES

The supplemental indexes offer a different perspective on community-level vulnerability. They combine data on percent low-income, percent linguistically isolated, percent less than high school education, percent unemployed, and low life expectancy with a single environmental indicator.

SUPPLEMENTAL INDEXES FOR THE SELECTED LOCATION



These percentiles provide perspective on how the selected block group or buffer area compares to the entire state or nation.

Report for 1 mile Ring Centered at 47.770541,-99.941597

EJScreen Environmental and Socioeconomic Indicators Data

SELECTED VARIABLES	VALUE	STATE AVERAGE	PERCENTILE IN STATE	USA AVERAGE	PERCENTILE IN USA
POLLUTION AND SOURCES					
Particulate Matter (µg/m ³)	4.88	5.41	27	8.08	3
Ozone (ppb)	55.3	57.3	14	61.6	9
Diesel Particulate Matter (µg/m ³)	0.0622	0.157	36	0.261	6
Air Toxics Cancer Risk* (lifetime risk per million)	10	16	0	25	1
Air Toxics Respiratory HI*	0.1	0.16	0	0.31	1
Toxic Releases to Air	0	460	9	4,600	1
Traffic Proximity (daily traffic count/distance to road)	2.4	85	24	210	7
Lead Paint (% Pre-1960 Housing)	0.36	0.29	60	0.3	63
Superfund Proximity (site count/km distance)	0.0028	0.0049	23	0.13	0
RMP Facility Proximity (facility count/km distance)	1.5	0.64	88	0.43	93
Hazardous Waste Proximity (facility count/km distance)	0.0092	0.37	6	1.9	0
Underground Storage Tanks (count/km ²)	1.7	2.1	62	3.9	56
Wastewater Discharge (toxicity-weighted concentration/m distance)	N/A	8.9	N/A	22	N/A
SOCIOECONOMIC INDICATORS					
Demographic Index	17%	21%	49	35%	25
Supplemental Demographic Index	13%	11%	68	14%	49
People of Color	7%	16%	37	39%	17
Low Income	27%	26%	59	31%	50
Unemployment Rate	1%	3%	40	6%	26
Limited English Speaking Households	0%	1%	0	5%	0
Less Than High School Education	11%	7%	77	12%	60
Under Age 5	4%	7%	28	6%	39
Over Age 64	31%	17%	92	17%	90
Low Life Expectancy	24%	18%	94	20%	87

*Diesel particulate matter, air toxics cancer risk, and air toxics respiratory hazard index are from the EPA's Air Toxics Data Update, which is the Agency's ongoing, comprehensive evaluation of air toxics in the United States. This effort aims to prioritize air toxics, emission sources, and locations of interest for further study. It is important to remember that the air toxics data presented here provide broad estimates of health risks over geographic areas of the country, not definitive risks to specific individuals or locations. Cancer risks and hazard indices from the Air Toxics Data Update are reported to one significant figure and any additional significant figures here are due to rounding. More information on the Air Toxics Data Update can be found at: <https://www.epa.gov/haps/air-toxics-data-update>.

Sites reporting to EPA within defined area:

Superfund	0
Hazardous Waste, Treatment, Storage, and Disposal Facilities	0
Water Dischargers	4
Air Pollution	2
Brownfields	2
Toxic Release Inventory	0

Other community features within defined area:

Schools	2
Hospitals	1
Places of Worship	0

Other environmental data:

Air Non-attainment	No
Impaired Waters	Yes

Selected location contains American Indian Reservation Lands*	No
Selected location contains a "Justice40 (CEJST)" disadvantaged community	No
Selected location contains an EPA IRA disadvantaged community	No

Report for 1 mile Ring Centered at 47.770541,-99.941597

EJScreen Environmental and Socioeconomic Indicators Data

HEALTH INDICATORS					
INDICATOR	VALUE	STATE AVERAGE	STATE PERCENTILE	US AVERAGE	US PERCENTILE
Low Life Expectancy	24%	18%	94	20%	87
Heart Disease	9.8	6.4	98	6.1	96
Asthma	8.9	9.3	30	10	20
Cancer	10.6	6.8	99	6.1	98
Persons with Disabilities	13.4%	11.8%	68	13.4%	55

CLIMATE INDICATORS					
INDICATOR	VALUE	STATE AVERAGE	STATE PERCENTILE	US AVERAGE	US PERCENTILE
Flood Risk	10%	9%	60	12%	65
Wildfire Risk	0%	19%	0	14%	0

CRITICAL SERVICE GAPS					
INDICATOR	VALUE	STATE AVERAGE	STATE PERCENTILE	US AVERAGE	US PERCENTILE
Broadband Internet	23%	17%	73	14%	79
Lack of Health Insurance	3%	8%	15	9%	20
Housing Burden	No	N/A	N/A	N/A	N/A
Transportation Access	No	N/A	N/A	N/A	N/A
Food Desert	No	N/A	N/A	N/A	N/A

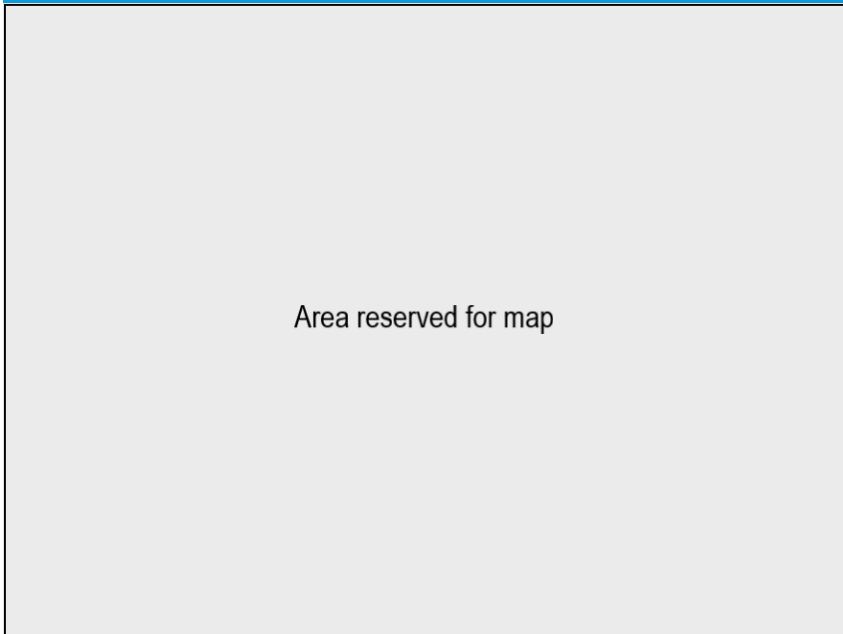
Report for 1 mile Ring Centered at 47.770541,-99.941597



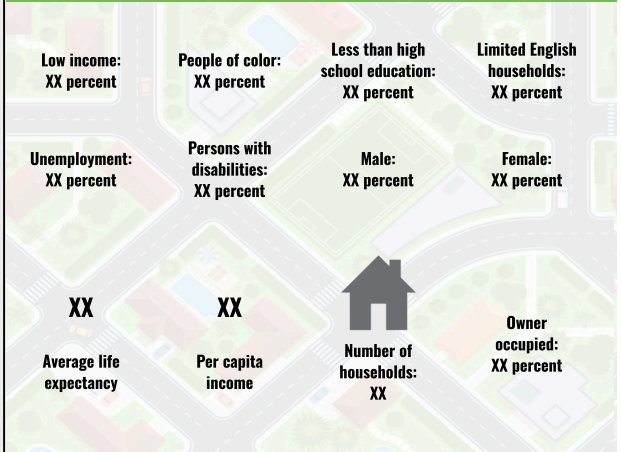
EJScreen Community Report

This report provides environmental and socioeconomic information for user-defined areas, and combines that data into environmental justice and supplemental indexes.

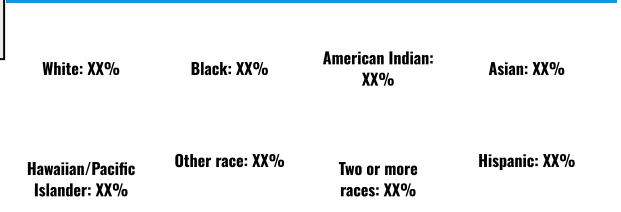
The area is too small or sparsely populated, or these data are not available in the national dataset. Cannot generate an EJScreen chart or report.



COMMUNITY INFORMATION



BREAKDOWN BY RACE



LANGUAGES SPOKEN AT HOME

LANGUAGE	PERCENT
English	XX%
Spanish	XX%
French, Haitian, or Cajun	XX%
German or other West Germanic	XX%
Russian, Polish, or Other Slavic	XX%
Other Indo-European	XX%
Korean	XX%
Chinese (including Mandarin, Cantonese)	XX%
Vietnamese	XX%
Tagalog (including Filipino)	XX%
Other Asian and Pacific Island	XX%
Arabic	XX%
Other and Unspecified	XX%
Total Non-English	XX%

BREAKDOWN BY AGE



LIMITED ENGLISH SPEAKING BREAKDOWN



Notes: Numbers may not sum to totals due to rounding. Hispanic population can be of any race. Source: U.S. Census Bureau, American Community Survey (ACS) 2017-2021. Life expectancy data comes from the Centers for Disease Control.

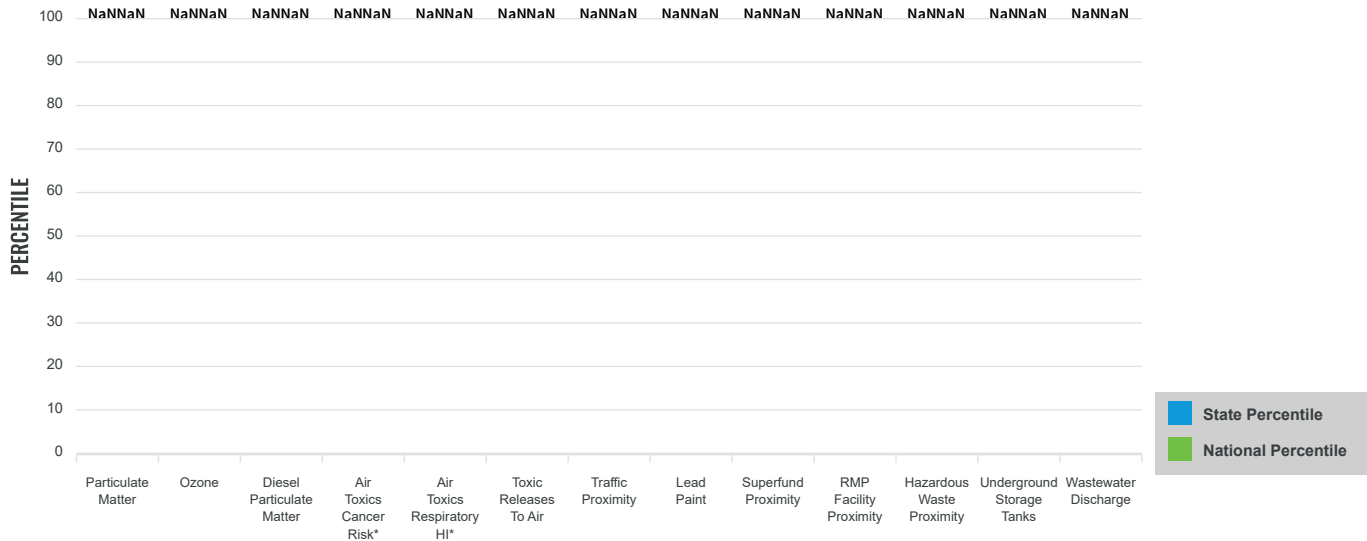
Environmental Justice & Supplemental Indexes

The environmental justice and supplemental indexes are a combination of environmental and socioeconomic information. There are thirteen EJ indexes and supplemental indexes in EJScreen reflecting the 13 environmental indicators. The indexes for a selected area are compared to those for all other locations in the state or nation. For more information and calculation details on the EJ and supplemental indexes, please visit the [EJScreen website](#).

EJ INDEXES

The EJ indexes help users screen for potential EJ concerns. To do this, the EJ index combines data on low income and people of color populations with a single environmental indicator.

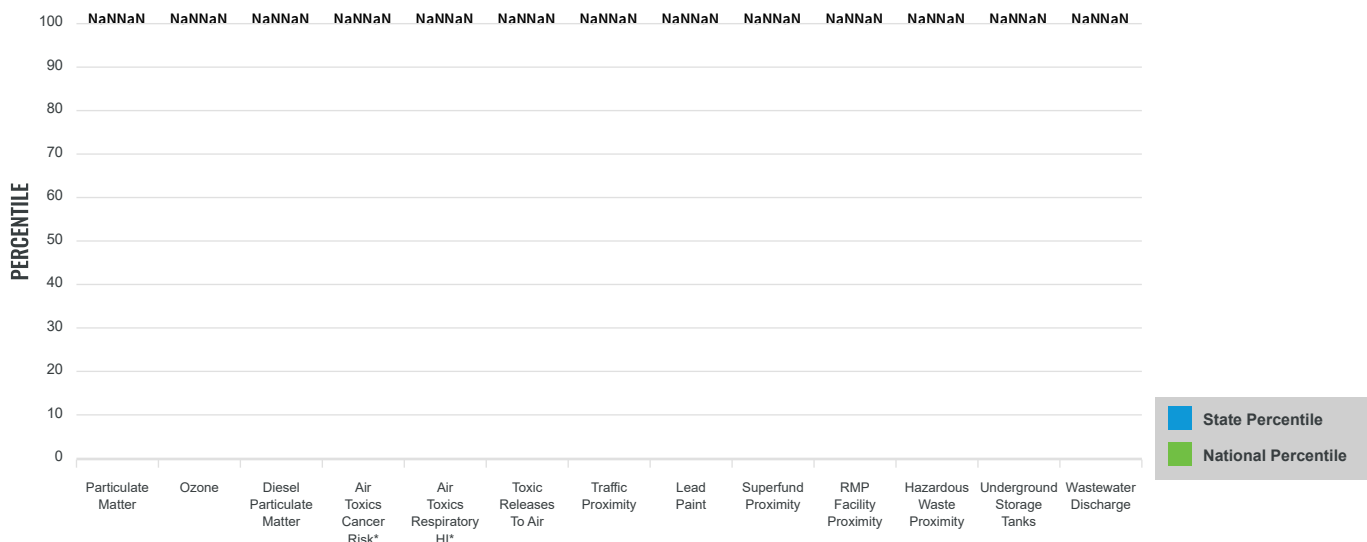
EJ INDEXES FOR THE SELECTED LOCATION



SUPPLEMENTAL INDEXES

The supplemental indexes offer a different perspective on community-level vulnerability. They combine data on percent low-income, percent linguistically isolated, percent less than high school education, percent unemployed, and low life expectancy with a single environmental indicator.

SUPPLEMENTAL INDEXES FOR THE SELECTED LOCATION



These percentiles provide perspective on how the selected block group or buffer area compares to the entire state or nation.

Report for XX

EJScreen Environmental and Socioeconomic Indicators Data

SELECTED VARIABLES	VALUE	STATE AVERAGE	PERCENTILE IN STATE	USA AVERAGE	PERCENTILE IN USA
POLLUTION AND SOURCES					
Particulate Matter (µg/m ³)	N/A	5.41	N/A	8.08	N/A
Ozone (ppb)	N/A	57.3	N/A	61.6	N/A
Diesel Particulate Matter (µg/m ³)	N/A	0.157	N/A	0.261	N/A
Air Toxics Cancer Risk* (lifetime risk per million)	N/A	16	N/A	25	N/A
Air Toxics Respiratory HI*	N/A	0.16	N/A	0.31	N/A
Toxic Releases to Air	NaN	460	NaN	4,600	NaN
Traffic Proximity (daily traffic count/distance to road)	NaN	85	NaN	210	NaN
Lead Paint (% Pre-1960 Housing)	N/A	0.29	N/A	0.3	N/A
Superfund Proximity (site count/km distance)	N/A	0.0049	N/A	0.13	N/A
RMP Facility Proximity (facility count/km distance)	N/A	0.64	N/A	0.43	N/A
Hazardous Waste Proximity (facility count/km distance)	N/A	0.37	N/A	1.9	N/A
Underground Storage Tanks (count/km ²)	N/A	2.1	N/A	3.9	N/A
Wastewater Discharge (toxicity-weighted concentration/m distance)	N/A	8.9	N/A	22	N/A
SOCIOECONOMIC INDICATORS					
Demographic Index	N/A	21%	N/A	35%	N/A
Supplemental Demographic Index	N/A	11%	N/A	14%	N/A
People of Color	N/A	16%	N/A	39%	N/A
Low Income	N/A	26%	N/A	31%	N/A
Unemployment Rate	N/A	3%	N/A	6%	N/A
Limited English Speaking Households	N/A	1%	N/A	5%	N/A
Less Than High School Education	N/A	7%	N/A	12%	N/A
Under Age 5	N/A	7%	N/A	6%	N/A
Over Age 64	N/A	17%	N/A	17%	N/A
Low Life Expectancy	N/A	18%	N/A	20%	N/A

*Diesel particulate matter, air toxics cancer risk, and air toxics respiratory hazard index are from the EPA's Air Toxics Data Update, which is the Agency's ongoing, comprehensive evaluation of air toxics in the United States. This effort aims to prioritize air toxics, emission sources, and locations of interest for further study. It is important to remember that the air toxics data presented here provide broad estimates of health risks over geographic areas of the country, not definitive risks to specific individuals or locations. Cancer risks and hazard indices from the Air Toxics Data Update are reported to one significant figure and any additional significant figures here are due to rounding. More information on the Air Toxics Data Update can be found at: <https://www.epa.gov/haps/air-toxics-data-update>.

Sites reporting to EPA within defined area:

Superfund	0
Hazardous Waste, Treatment, Storage, and Disposal Facilities	0
Water Dischargers	0
Air Pollution	0
Brownfields	0
Toxic Release Inventory	0

Other community features within defined area:

Schools	0
Hospitals	0
Places of Worship	0

Other environmental data:

Air Non-attainment	No
Impaired Waters	No

Selected location contains American Indian Reservation Lands*	No
Selected location contains a "Justice40 (CEJST)" disadvantaged community	No
Selected location contains an EPA IRA disadvantaged community	Yes

Report for XX

EJScreen Environmental and Socioeconomic Indicators Data

HEALTH INDICATORS

INDICATOR	VALUE	STATE AVERAGE	STATE PERCENTILE	US AVERAGE	US PERCENTILE
Low Life Expectancy	N/A	18%	N/A	20%	N/A
Heart Disease	N/A	6.4	N/A	6.1	N/A
Asthma	N/A	9.3	N/A	10	N/A
Cancer	N/A	6.8	N/A	6.1	N/A
Persons with Disabilities	N/A	11.8%	N/A	13.4%	N/A

CLIMATE INDICATORS

INDICATOR	VALUE	STATE AVERAGE	STATE PERCENTILE	US AVERAGE	US PERCENTILE
Flood Risk	N/A	9%	N/A	12%	N/A
Wildfire Risk	N/A	19%	N/A	14%	N/A

CRITICAL SERVICE GAPS

INDICATOR	VALUE	STATE AVERAGE	STATE PERCENTILE	US AVERAGE	US PERCENTILE
Broadband Internet	N/A	17%	N/A	14%	N/A
Lack of Health Insurance	N/A	8%	N/A	9%	N/A
Housing Burden	No	N/A	N/A	N/A	N/A
Transportation Access	No	N/A	N/A	N/A	N/A
Food Desert	No	N/A	N/A	N/A	N/A

Report for XX



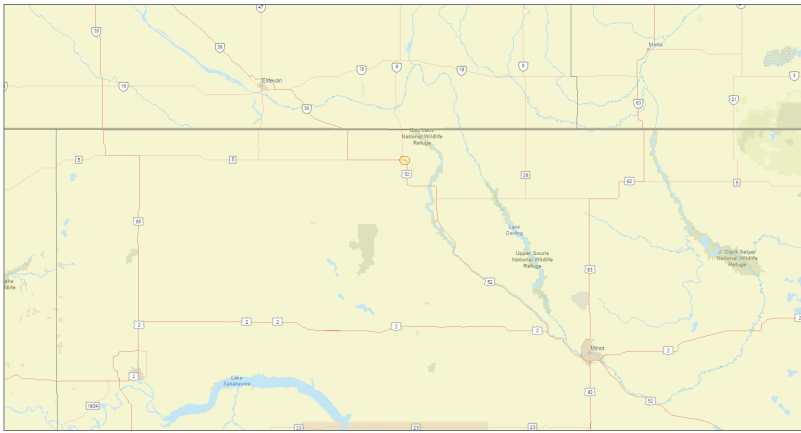
EJScreen Community Report

This report provides environmental and socioeconomic information for user-defined areas, and combines that data into environmental justice and supplemental indexes.

Burke County, ND

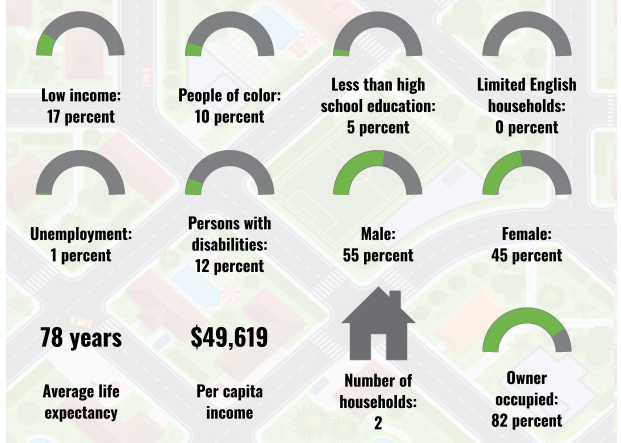
1 mile Ring around the Corridor
Population: 9
Area in square miles: 3.89

A3 Landscape

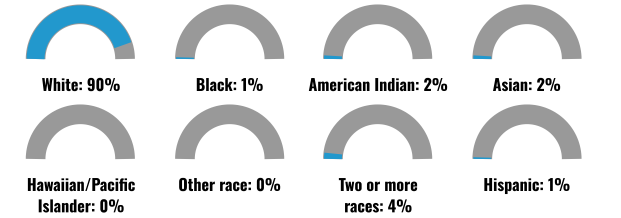


April 27, 2024
RP0.9
us_52_project_area
1:1,155,581
0 5 10 20 mi
0 5 10 20 km
State of North Dakota, Esri, DeLorme, Garmin, Landsat, NOAA, USGS, EPA, FWS, USFWS

COMMUNITY INFORMATION



BREAKDOWN BY RACE



BREAKDOWN BY AGE



LIMITED ENGLISH SPEAKING BREAKDOWN



Notes: Numbers may not sum to totals due to rounding. Hispanic population can be of any race. Source: U.S. Census Bureau, American Community Survey (ACS) 2017-2021. Life expectancy data comes from the Centers for Disease Control.

LANGUAGES SPOKEN AT HOME

LANGUAGE	PERCENT
No language data available.	

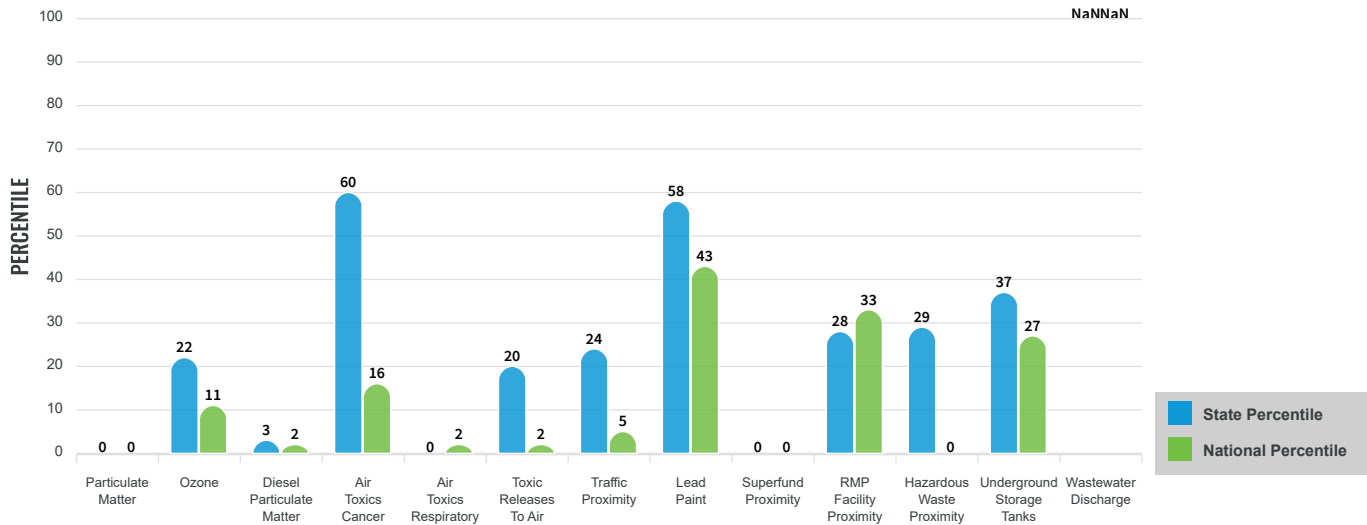
Environmental Justice & Supplemental Indexes

The environmental justice and supplemental indexes are a combination of environmental and socioeconomic information. There are thirteen EJ indexes and supplemental indexes in EJScreen reflecting the 13 environmental indicators. The indexes for a selected area are compared to those for all other locations in the state or nation. For more information and calculation details on the EJ and supplemental indexes, please visit the [EJScreen website](#).

EJ INDEXES

The EJ indexes help users screen for potential EJ concerns. To do this, the EJ index combines data on low income and people of color populations with a single environmental indicator.

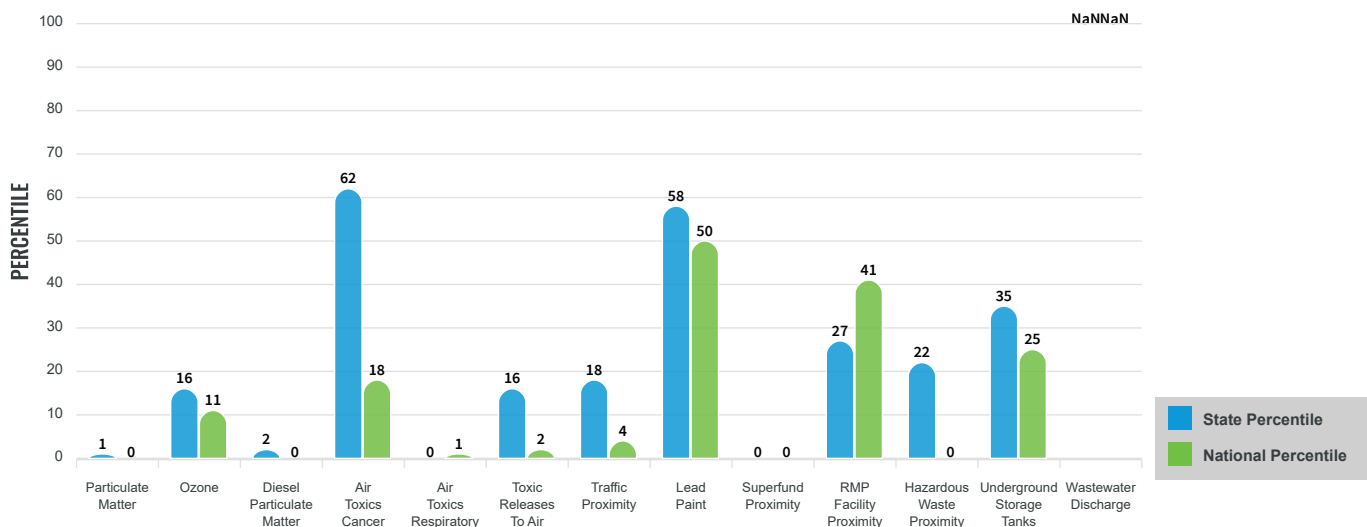
EJ INDEXES FOR THE SELECTED LOCATION



SUPPLEMENTAL INDEXES

The supplemental indexes offer a different perspective on community-level vulnerability. They combine data on percent low-income, percent linguistically isolated, percent less than high school education, percent unemployed, and low life expectancy with a single environmental indicator.

SUPPLEMENTAL INDEXES FOR THE SELECTED LOCATION



These percentiles provide perspective on how the selected block group or buffer area compares to the entire state or nation.

Report for 1 mile Ring around the Corridor

EJScreen Environmental and Socioeconomic Indicators Data

SELECTED VARIABLES	VALUE	STATE AVERAGE	PERCENTILE IN STATE	USA AVERAGE	PERCENTILE IN USA
POLLUTION AND SOURCES					
Particulate Matter (µg/m ³)	4.06	5.41	1	8.08	0
Ozone (ppb)	56.1	57.3	20	61.6	13
Diesel Particulate Matter (µg/m ³)	0.0274	0.157	2	0.261	1
Air Toxics Cancer Risk* (lifetime risk per million)	20	16	41	25	5
Air Toxics Respiratory HI*	0.1	0.16	0	0.31	1
Toxic Releases to Air	0.07	460	18	4,600	2
Traffic Proximity (daily traffic count/distance to road)	1.4	85	18	210	5
Lead Paint (% Pre-1960 Housing)	0.43	0.29	70	0.3	68
Superfund Proximity (site count/km distance)	0.002	0.0049	0	0.13	0
RMP Facility Proximity (facility count/km distance)	0.16	0.64	25	0.43	47
Hazardous Waste Proximity (facility count/km distance)	0.018	0.37	23	1.9	1
Underground Storage Tanks (count/km ²)	0.022	2.1	32	3.9	23
Wastewater Discharge (toxicity-weighted concentration/m distance)	N/A	8.9	N/A	22	N/A
SOCIOECONOMIC INDICATORS					
Demographic Index	14%	21%	35	35%	18
Supplemental Demographic Index	9%	11%	33	14%	26
People of Color	10%	16%	50	39%	23
Low Income	17%	26%	32	31%	32
Unemployment Rate	1%	3%	35	6%	24
Limited English Speaking Households	0%	1%	0	5%	0
Less Than High School Education	5%	7%	45	12%	35
Under Age 5	8%	7%	65	6%	74
Over Age 64	16%	17%	50	17%	52
Low Life Expectancy	20%	18%	70	20%	56

*Diesel particulate matter, air toxics cancer risk, and air toxics respiratory hazard index are from the EPA's Air Toxics Data Update, which is the Agency's ongoing, comprehensive evaluation of air toxics in the United States. This effort aims to prioritize air toxics, emission sources, and locations of interest for further study. It is important to remember that the air toxics data presented here provide broad estimates of health risks over geographic areas of the country, not definitive risks to specific individuals or locations. Cancer risks and hazard indices from the Air Toxics Data Update are reported to one significant figure and any additional significant figures here are due to rounding. More information on the Air Toxics Data Update can be found at: <https://www.epa.gov/haps/air-toxics-data-update>.

Sites reporting to EPA within defined area:

Superfund	0
Hazardous Waste, Treatment, Storage, and Disposal Facilities	0
Water Dischargers	0
Air Pollution	0
Brownfields	0
Toxic Release Inventory	0

Other community features within defined area:

Schools	0
Hospitals	0
Places of Worship	0

Other environmental data:

Air Non-attainment	No
Impaired Waters	No

Selected location contains American Indian Reservation Lands*	No
Selected location contains a "Justice40 (CEJST)" disadvantaged community	No
Selected location contains an EPA IRA disadvantaged community	No

Report for 1 mile Ring around the Corridor

EJScreen Environmental and Socioeconomic Indicators Data

HEALTH INDICATORS					
INDICATOR	VALUE	STATE AVERAGE	STATE PERCENTILE	US AVERAGE	US PERCENTILE
Low Life Expectancy	20%	18%	70	20%	56
Heart Disease	8	6.4	79	6.1	84
Asthma	8.8	9.3	19	10	20
Cancer	8.6	6.8	82	6.1	94
Persons with Disabilities	11.7%	11.8%	50	13.4%	44

CLIMATE INDICATORS					
INDICATOR	VALUE	STATE AVERAGE	STATE PERCENTILE	US AVERAGE	US PERCENTILE
Flood Risk	7%	9%	49	12%	55
Wildfire Risk	18%	19%	71	14%	82

CRITICAL SERVICE GAPS					
INDICATOR	VALUE	STATE AVERAGE	STATE PERCENTILE	US AVERAGE	US PERCENTILE
Broadband Internet	13%	17%	40	14%	56
Lack of Health Insurance	5%	8%	38	9%	38
Housing Burden	No	N/A	N/A	N/A	N/A
Transportation Access	No	N/A	N/A	N/A	N/A
Food Desert	No	N/A	N/A	N/A	N/A

Report for 1 mile Ring around the Corridor

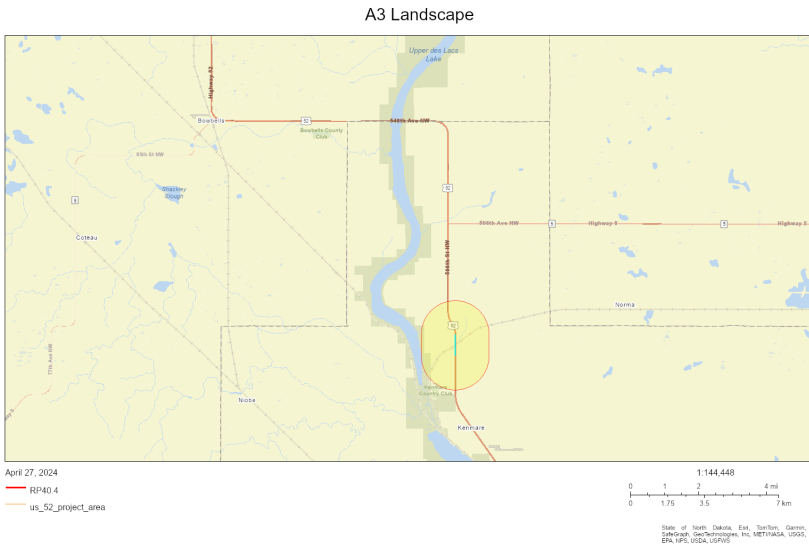


EJScreen Community Report

This report provides environmental and socioeconomic information for user-defined areas, and combines that data into environmental justice and supplemental indexes.

Ward County, ND

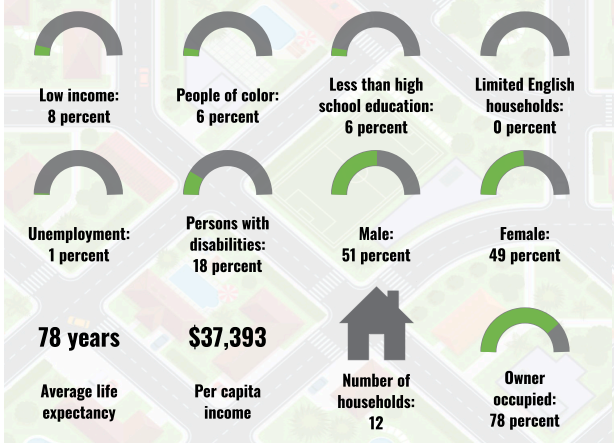
1 mile Ring around the Corridor
Population: 40
Area in square miles: 4.39



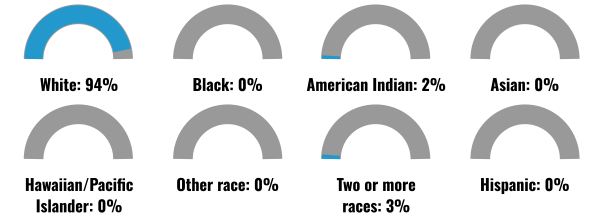
LANGUAGES SPOKEN AT HOME

LANGUAGE	PERCENT
No language data available.	

COMMUNITY INFORMATION



BREAKDOWN BY RACE



BREAKDOWN BY AGE



LIMITED ENGLISH SPEAKING BREAKDOWN



Notes: Numbers may not sum to totals due to rounding. Hispanic population can be of any race. Source: U.S. Census Bureau, American Community Survey (ACS) 2017-2021. Life expectancy data comes from the Centers for Disease Control.

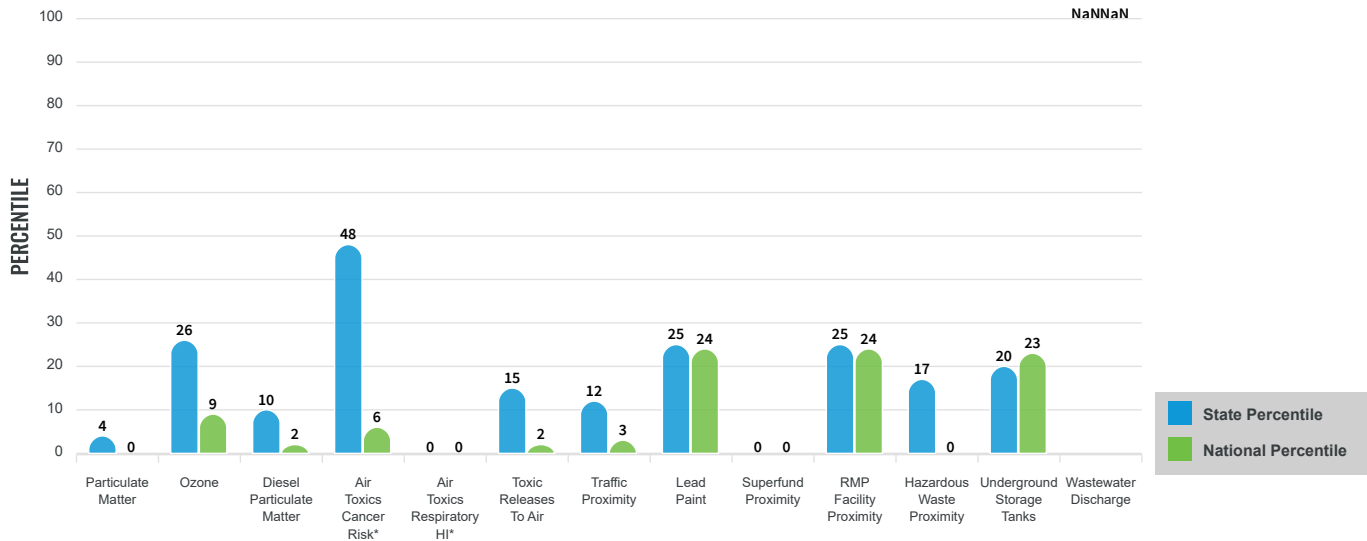
Environmental Justice & Supplemental Indexes

The environmental justice and supplemental indexes are a combination of environmental and socioeconomic information. There are thirteen EJ indexes and supplemental indexes in EJScreen reflecting the 13 environmental indicators. The indexes for a selected area are compared to those for all other locations in the state or nation. For more information and calculation details on the EJ and supplemental indexes, please visit the [EJScreen website](#).

EJ INDEXES

The EJ indexes help users screen for potential EJ concerns. To do this, the EJ index combines data on low income and people of color populations with a single environmental indicator.

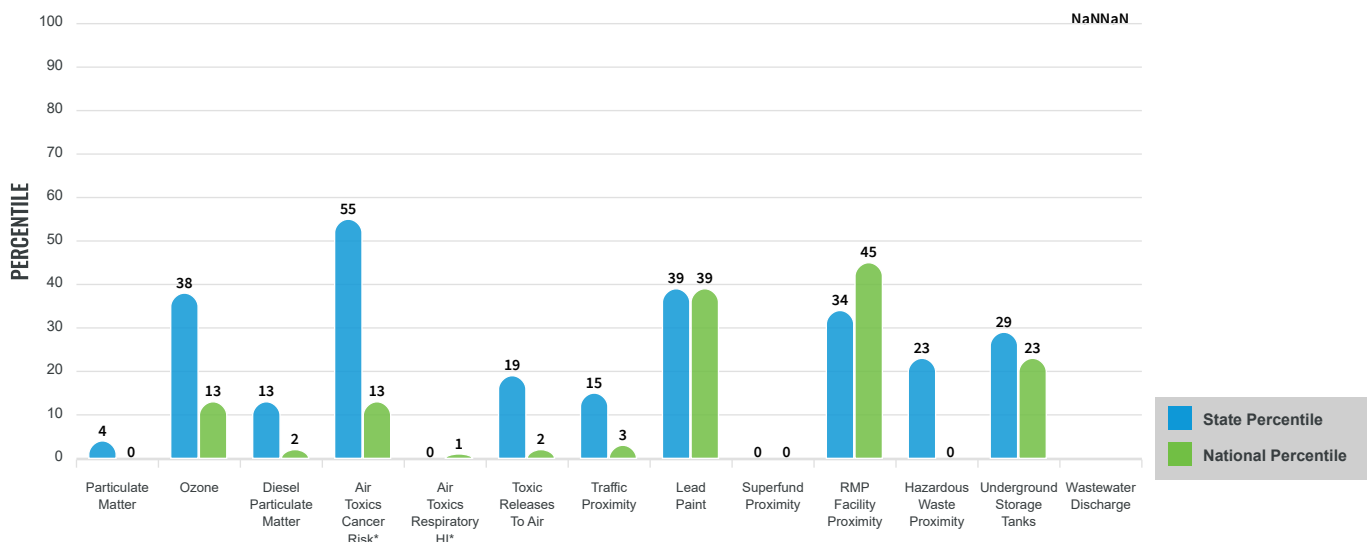
EJ INDEXES FOR THE SELECTED LOCATION



SUPPLEMENTAL INDEXES

The supplemental indexes offer a different perspective on community-level vulnerability. They combine data on percent low-income, percent linguistically isolated, percent less than high school education, percent unemployed, and low life expectancy with a single environmental indicator.

SUPPLEMENTAL INDEXES FOR THE SELECTED LOCATION



These percentiles provide perspective on how the selected block group or buffer area compares to the entire state or nation.

Report for 1 mile Ring around the Corridor

EJScreen Environmental and Socioeconomic Indicators Data

SELECTED VARIABLES	VALUE	STATE AVERAGE	PERCENTILE IN STATE	USA AVERAGE	PERCENTILE IN USA
POLLUTION AND SOURCES					
Particulate Matter (µg/m ³)	4.24	5.41	6	8.08	1
Ozone (ppb)	57.4	57.3	49	61.6	20
Diesel Particulate Matter (µg/m ³)	0.0439	0.157	19	0.261	3
Air Toxics Cancer Risk* (lifetime risk per million)	20	16	41	25	5
Air Toxics Respiratory HI*	0.1	0.16	0	0.31	1
Toxic Releases to Air	0.18	460	26	4,600	3
Traffic Proximity (daily traffic count/distance to road)	1.5	85	19	210	5
Lead Paint (% Pre-1960 Housing)	0.35	0.29	58	0.3	62
Superfund Proximity (site count/km distance)	0.002	0.0049	0	0.13	0
RMP Facility Proximity (facility count/km distance)	0.28	0.64	42	0.43	66
Hazardous Waste Proximity (facility count/km distance)	0.023	0.37	30	1.9	2
Underground Storage Tanks (count/km ²)	0.025	2.1	33	3.9	23
Wastewater Discharge (toxicity-weighted concentration/m distance)	N/A	8.9	N/A	22	N/A
SOCIOECONOMIC INDICATORS					
Demographic Index	7%	21%	9	35%	4
Supplemental Demographic Index	7%	11%	18	14%	16
People of Color	6%	16%	31	39%	14
Low Income	8%	26%	10	31%	13
Unemployment Rate	1%	3%	38	6%	25
Limited English Speaking Households	0%	1%	0	5%	0
Less Than High School Education	6%	7%	53	12%	41
Under Age 5	10%	7%	82	6%	86
Over Age 64	25%	17%	80	17%	80
Low Life Expectancy	20%	18%	68	20%	54

*Diesel particulate matter, air toxics cancer risk, and air toxics respiratory hazard index are from the EPA's Air Toxics Data Update, which is the Agency's ongoing, comprehensive evaluation of air toxics in the United States. This effort aims to prioritize air toxics, emission sources, and locations of interest for further study. It is important to remember that the air toxics data presented here provide broad estimates of health risks over geographic areas of the country, not definitive risks to specific individuals or locations. Cancer risks and hazard indices from the Air Toxics Data Update are reported to one significant figure and any additional significant figures here are due to rounding. More information on the Air Toxics Data Update can be found at: <https://www.epa.gov/haps/air-toxics-data-update>.

Sites reporting to EPA within defined area:

Superfund	0
Hazardous Waste, Treatment, Storage, and Disposal Facilities	0
Water Dischargers	0
Air Pollution	0
Brownfields	0
Toxic Release Inventory	0

Other community features within defined area:

Schools	0
Hospitals	0
Places of Worship	0

Other environmental data:

Air Non-attainment	No
Impaired Waters	Yes

Selected location contains American Indian Reservation Lands*	No
Selected location contains a "Justice40 (CEJST)" disadvantaged community	No
Selected location contains an EPA IRA disadvantaged community	No

Report for 1 mile Ring around the Corridor

EJScreen Environmental and Socioeconomic Indicators Data

HEALTH INDICATORS					
INDICATOR	VALUE	STATE AVERAGE	STATE PERCENTILE	US AVERAGE	US PERCENTILE
Low Life Expectancy	20%	18%	68	20%	55
Heart Disease	7.4	6.4	67	6.1	76
Asthma	8.5	9.3	4	10	13
Cancer	8.3	6.8	79	6.1	92
Persons with Disabilities	12.9%	11.8%	65	13.4%	52

CLIMATE INDICATORS					
INDICATOR	VALUE	STATE AVERAGE	STATE PERCENTILE	US AVERAGE	US PERCENTILE
Flood Risk	7%	9%	49	12%	54
Wildfire Risk	25%	19%	75	14%	83

CRITICAL SERVICE GAPS					
INDICATOR	VALUE	STATE AVERAGE	STATE PERCENTILE	US AVERAGE	US PERCENTILE
Broadband Internet	19%	17%	62	14%	72
Lack of Health Insurance	4%	8%	29	9%	32
Housing Burden	No	N/A	N/A	N/A	N/A
Transportation Access	No	N/A	N/A	N/A	N/A
Food Desert	No	N/A	N/A	N/A	N/A

Report for 1 mile Ring around the Corridor



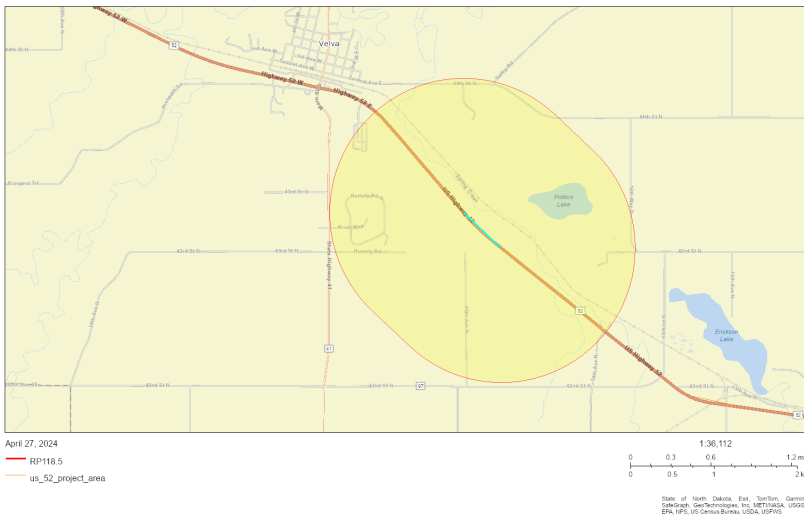
EJScreen Community Report

This report provides environmental and socioeconomic information for user-defined areas, and combines that data into environmental justice and supplemental indexes.

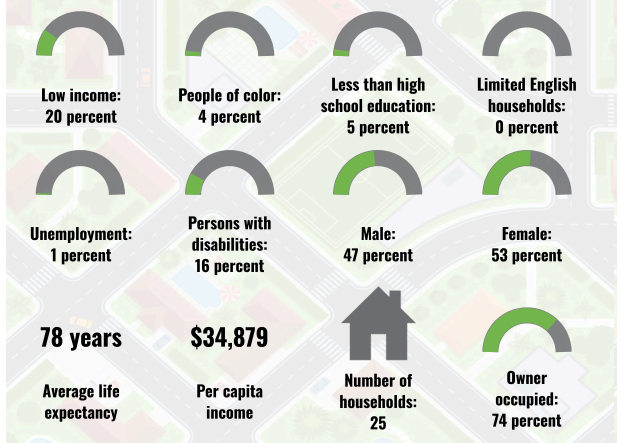
McHenry County, ND

1 mile Ring around the Corridor
 Population: 75
 Area in square miles: 3.92

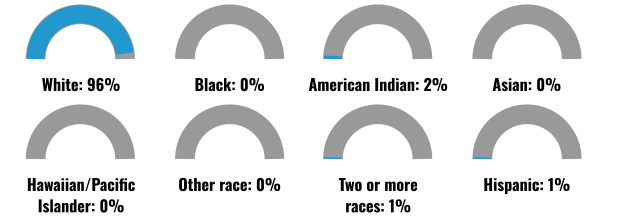
A3 Landscape



COMMUNITY INFORMATION



BREAKDOWN BY RACE



BREAKDOWN BY AGE



LIMITED ENGLISH SPEAKING BREAKDOWN



LANGUAGES SPOKEN AT HOME

LANGUAGE	PERCENT
No language data available.	

Notes: Numbers may not sum to totals due to rounding. Hispanic population can be of any race. Source: U.S. Census Bureau, American Community Survey (ACS) 2017-2021. Life expectancy data comes from the Centers for Disease Control.

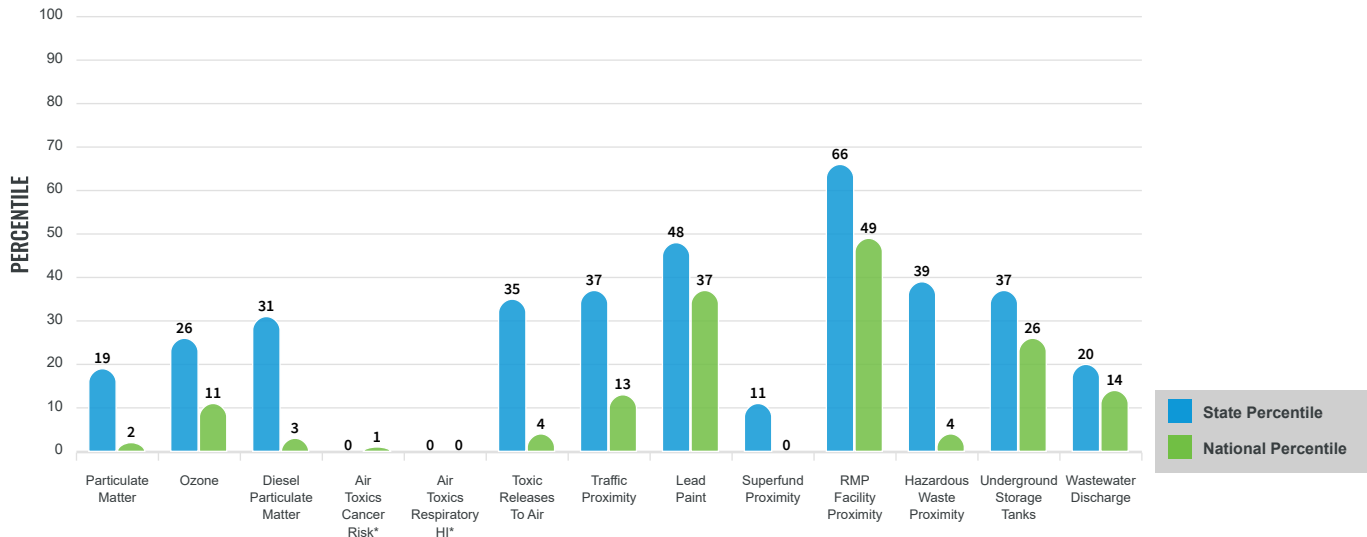
Environmental Justice & Supplemental Indexes

The environmental justice and supplemental indexes are a combination of environmental and socioeconomic information. There are thirteen EJ indexes and supplemental indexes in EJScreen reflecting the 13 environmental indicators. The indexes for a selected area are compared to those for all other locations in the state or nation. For more information and calculation details on the EJ and supplemental indexes, please visit the [EJScreen website](#).

EJ INDEXES

The EJ indexes help users screen for potential EJ concerns. To do this, the EJ index combines data on low income and people of color populations with a single environmental indicator.

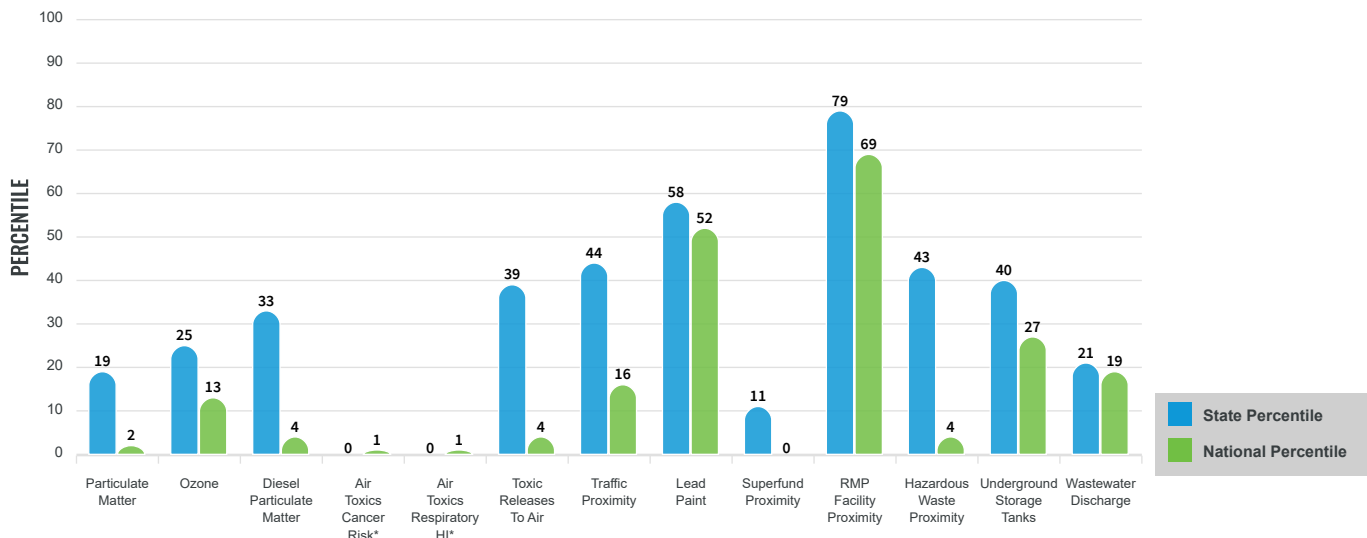
EJ INDEXES FOR THE SELECTED LOCATION



SUPPLEMENTAL INDEXES

The supplemental indexes offer a different perspective on community-level vulnerability. They combine data on percent low-income, percent linguistically isolated, percent less than high school education, percent unemployed, and low life expectancy with a single environmental indicator.

SUPPLEMENTAL INDEXES FOR THE SELECTED LOCATION



These percentiles provide perspective on how the selected block group or buffer area compares to the entire state or nation.

Report for 1 mile Ring around the Corridor

EJScreen Environmental and Socioeconomic Indicators Data

SELECTED VARIABLES	VALUE	STATE AVERAGE	PERCENTILE IN STATE	USA AVERAGE	PERCENTILE IN USA
POLLUTION AND SOURCES					
Particulate Matter (µg/m ³)	4.81	5.41	20	8.08	2
Ozone (ppb)	56.3	57.3	26	61.6	14
Diesel Particulate Matter (µg/m ³)	0.055	0.157	29	0.261	4
Air Toxics Cancer Risk* (lifetime risk per million)	10	16	0	25	1
Air Toxics Respiratory HI*	0.1	0.16	0	0.31	1
Toxic Releases to Air	1.4	460	36	4,600	5
Traffic Proximity (daily traffic count/distance to road)	9.8	85	38	210	16
Lead Paint (% Pre-1960 Housing)	0.39	0.29	64	0.3	65
Superfund Proximity (site count/km distance)	0.0023	0.0049	11	0.13	0
RMP Facility Proximity (facility count/km distance)	2.3	0.64	96	0.43	97
Hazardous Waste Proximity (facility count/km distance)	0.034	0.37	35	1.9	5
Underground Storage Tanks (count/km ²)	0.032	2.1	35	3.9	24
Wastewater Discharge (toxicity-weighted concentration/m distance)	2.1E-05	8.9	20	22	21
SOCIOECONOMIC INDICATORS					
Demographic Index	12%	21%	29	35%	14
Supplemental Demographic Index	9%	11%	40	14%	31
People of Color	4%	16%	22	39%	10
Low Income	20%	26%	39	31%	38
Unemployment Rate	2%	3%	45	6%	29
Limited English Speaking Households	0%	1%	0	5%	0
Less Than High School Education	5%	7%	47	12%	37
Under Age 5	7%	7%	60	6%	70
Over Age 64	20%	17%	63	17%	66
Low Life Expectancy	20%	18%	68	20%	54

*Diesel particulate matter, air toxics cancer risk, and air toxics respiratory hazard index are from the EPA's Air Toxics Data Update, which is the Agency's ongoing, comprehensive evaluation of air toxics in the United States. This effort aims to prioritize air toxics, emission sources, and locations of interest for further study. It is important to remember that the air toxics data presented here provide broad estimates of health risks over geographic areas of the country, not definitive risks to specific individuals or locations. Cancer risks and hazard indices from the Air Toxics Data Update are reported to one significant figure and any additional significant figures here are due to rounding. More information on the Air Toxics Data Update can be found at: <https://www.epa.gov/haps/air-toxics-data-update>.

Sites reporting to EPA within defined area:

Superfund	0
Hazardous Waste, Treatment, Storage, and Disposal Facilities	0
Water Dischargers	2
Air Pollution	0
Brownfields	0
Toxic Release Inventory	0

Other community features within defined area:

Schools	0
Hospitals	0
Places of Worship	0

Other environmental data:

Air Non-attainment	No
Impaired Waters	Yes

Selected location contains American Indian Reservation Lands*	No
Selected location contains a "Justice40 (CEJST)" disadvantaged community	No
Selected location contains an EPA IRA disadvantaged community	No

Report for 1 mile Ring around the Corridor

EJScreen Environmental and Socioeconomic Indicators Data

HEALTH INDICATORS					
INDICATOR	VALUE	STATE AVERAGE	STATE PERCENTILE	US AVERAGE	US PERCENTILE
Low Life Expectancy	20%	18%	68	20%	55
Heart Disease	7.9	6.4	78	6.1	83
Asthma	8.6	9.3	7	10	15
Cancer	8.7	6.8	84	6.1	94
Persons with Disabilities	14.3%	11.8%	75	13.4%	61

CLIMATE INDICATORS					
INDICATOR	VALUE	STATE AVERAGE	STATE PERCENTILE	US AVERAGE	US PERCENTILE
Flood Risk	10%	9%	65	12%	67
Wildfire Risk	4%	19%	62	14%	80

CRITICAL SERVICE GAPS					
INDICATOR	VALUE	STATE AVERAGE	STATE PERCENTILE	US AVERAGE	US PERCENTILE
Broadband Internet	22%	17%	71	14%	77
Lack of Health Insurance	5%	8%	37	9%	37
Housing Burden	No	N/A	N/A	N/A	N/A
Transportation Access	Yes	N/A	N/A	N/A	N/A
Food Desert	No	N/A	N/A	N/A	N/A

Report for 1 mile Ring around the Corridor



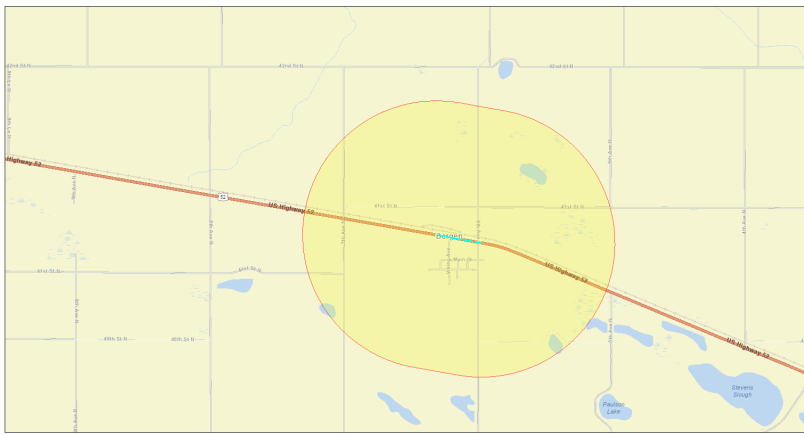
EJScreen Community Report

This report provides environmental and socioeconomic information for user-defined areas, and combines that data into environmental justice and supplemental indexes.

Bergen, ND

1 mile Ring around the Corridor
Population: 20
Area in square miles: 3.82

A3 Landscape

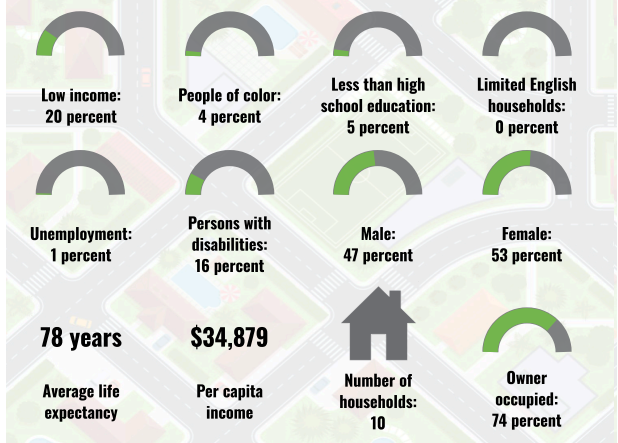


April 27, 2024
RP127.0
us_52_project_area

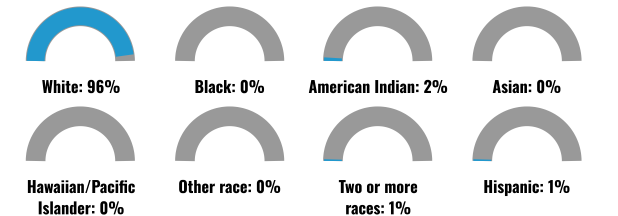
1:36,112
0 0.3 0.6 1.2 mi
0 0.5 1 2 km

State of North Dakota, East, North, Center, South, Southwest, Northwest, NE, METROLOG, USGS, EPA, NPS, US Census Bureau, USDA, USFWS

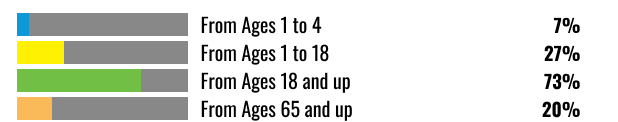
COMMUNITY INFORMATION



BREAKDOWN BY RACE



BREAKDOWN BY AGE



LIMITED ENGLISH SPEAKING BREAKDOWN



LANGUAGES SPOKEN AT HOME

LANGUAGE	PERCENT
No language data available.	

Notes: Numbers may not sum to totals due to rounding. Hispanic population can be of any race. Source: U.S. Census Bureau, American Community Survey (ACS) 2017-2021. Life expectancy data comes from the Centers for Disease Control.

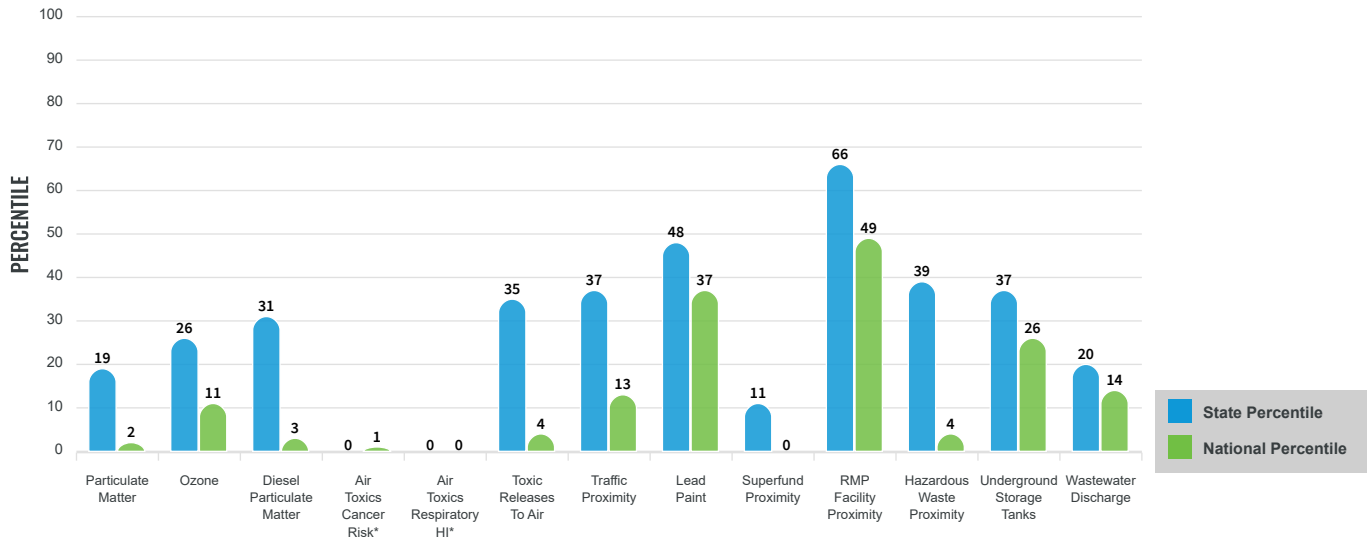
Environmental Justice & Supplemental Indexes

The environmental justice and supplemental indexes are a combination of environmental and socioeconomic information. There are thirteen EJ indexes and supplemental indexes in EJScreen reflecting the 13 environmental indicators. The indexes for a selected area are compared to those for all other locations in the state or nation. For more information and calculation details on the EJ and supplemental indexes, please visit the [EJScreen website](#).

EJ INDEXES

The EJ indexes help users screen for potential EJ concerns. To do this, the EJ index combines data on low income and people of color populations with a single environmental indicator.

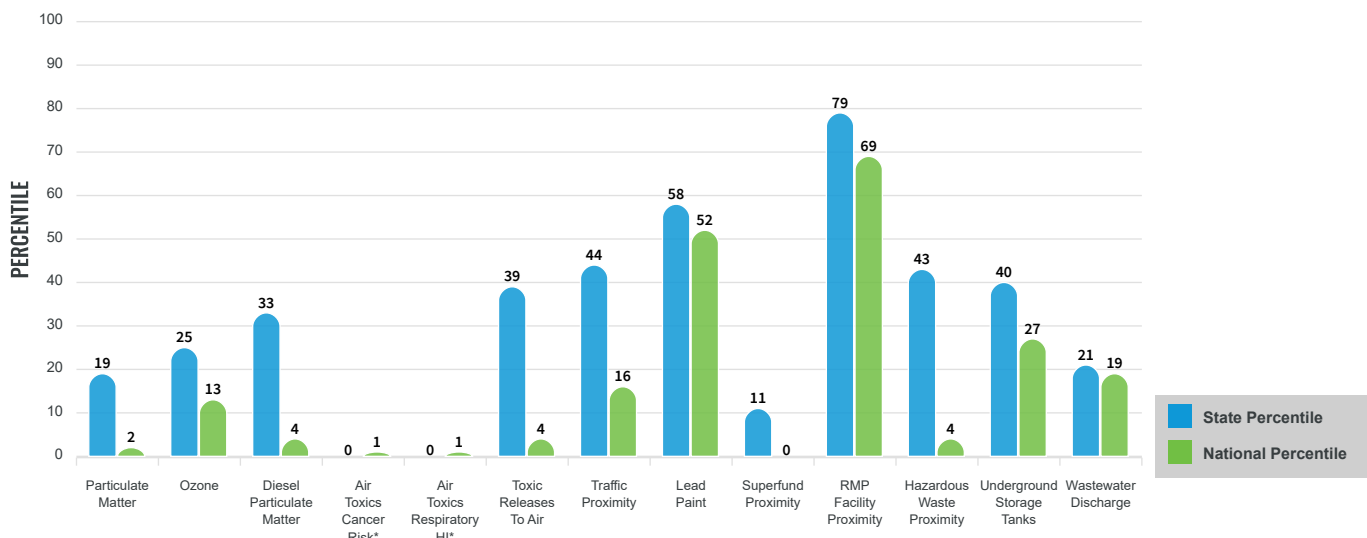
EJ INDEXES FOR THE SELECTED LOCATION



SUPPLEMENTAL INDEXES

The supplemental indexes offer a different perspective on community-level vulnerability. They combine data on percent low-income, percent linguistically isolated, percent less than high school education, percent unemployed, and low life expectancy with a single environmental indicator.

SUPPLEMENTAL INDEXES FOR THE SELECTED LOCATION



These percentiles provide perspective on how the selected block group or buffer area compares to the entire state or nation.

Report for 1 mile Ring around the Corridor

EJScreen Environmental and Socioeconomic Indicators Data

SELECTED VARIABLES	VALUE	STATE AVERAGE	PERCENTILE IN STATE	USA AVERAGE	PERCENTILE IN USA
POLLUTION AND SOURCES					
Particulate Matter (µg/m ³)	4.81	5.41	20	8.08	2
Ozone (ppb)	56.3	57.3	26	61.6	14
Diesel Particulate Matter (µg/m ³)	0.055	0.157	29	0.261	4
Air Toxics Cancer Risk* (lifetime risk per million)	10	16	0	25	1
Air Toxics Respiratory HI*	0.1	0.16	0	0.31	1
Toxic Releases to Air	1.4	460	36	4,600	5
Traffic Proximity (daily traffic count/distance to road)	9.8	85	38	210	16
Lead Paint (% Pre-1960 Housing)	0.39	0.29	64	0.3	65
Superfund Proximity (site count/km distance)	0.0023	0.0049	11	0.13	0
RMP Facility Proximity (facility count/km distance)	2.3	0.64	96	0.43	97
Hazardous Waste Proximity (facility count/km distance)	0.034	0.37	35	1.9	5
Underground Storage Tanks (count/km ²)	0.032	2.1	35	3.9	24
Wastewater Discharge (toxicity-weighted concentration/m distance)	2.1E-05	8.9	20	22	21
SOCIOECONOMIC INDICATORS					
Demographic Index	12%	21%	29	35%	14
Supplemental Demographic Index	9%	11%	40	14%	31
People of Color	4%	16%	22	39%	10
Low Income	20%	26%	39	31%	38
Unemployment Rate	2%	3%	45	6%	29
Limited English Speaking Households	0%	1%	0	5%	0
Less Than High School Education	5%	7%	47	12%	37
Under Age 5	7%	7%	60	6%	70
Over Age 64	20%	17%	63	17%	66
Low Life Expectancy	20%	18%	68	20%	54

*Diesel particulate matter, air toxics cancer risk, and air toxics respiratory hazard index are from the EPA's Air Toxics Data Update, which is the Agency's ongoing, comprehensive evaluation of air toxics in the United States. This effort aims to prioritize air toxics, emission sources, and locations of interest for further study. It is important to remember that the air toxics data presented here provide broad estimates of health risks over geographic areas of the country, not definitive risks to specific individuals or locations. Cancer risks and hazard indices from the Air Toxics Data Update are reported to one significant figure and any additional significant figures here are due to rounding. More information on the Air Toxics Data Update can be found at: <https://www.epa.gov/haps/air-toxics-data-update>.

Sites reporting to EPA within defined area:

Superfund	0
Hazardous Waste, Treatment, Storage, and Disposal Facilities	0
Water Dischargers	0
Air Pollution	0
Brownfields	0
Toxic Release Inventory	0

Other community features within defined area:

Schools	0
Hospitals	0
Places of Worship	0

Other environmental data:

Air Non-attainment	No
Impaired Waters	No

Selected location contains American Indian Reservation Lands*	No
Selected location contains a "Justice40 (CEJST)" disadvantaged community	No
Selected location contains an EPA IRA disadvantaged community	No

Report for 1 mile Ring around the Corridor

EJScreen Environmental and Socioeconomic Indicators Data

HEALTH INDICATORS					
INDICATOR	VALUE	STATE AVERAGE	STATE PERCENTILE	US AVERAGE	US PERCENTILE
Low Life Expectancy	20%	18%	68	20%	55
Heart Disease	7.9	6.4	78	6.1	83
Asthma	8.6	9.3	7	10	15
Cancer	8.7	6.8	84	6.1	94
Persons with Disabilities	14.3%	11.8%	75	13.4%	61

CLIMATE INDICATORS					
INDICATOR	VALUE	STATE AVERAGE	STATE PERCENTILE	US AVERAGE	US PERCENTILE
Flood Risk	10%	9%	65	12%	67
Wildfire Risk	4%	19%	62	14%	80

CRITICAL SERVICE GAPS					
INDICATOR	VALUE	STATE AVERAGE	STATE PERCENTILE	US AVERAGE	US PERCENTILE
Broadband Internet	22%	17%	71	14%	77
Lack of Health Insurance	5%	8%	37	9%	37
Housing Burden	No	N/A	N/A	N/A	N/A
Transportation Access	Yes	N/A	N/A	N/A	N/A
Food Desert	No	N/A	N/A	N/A	N/A

Report for 1 mile Ring around the Corridor



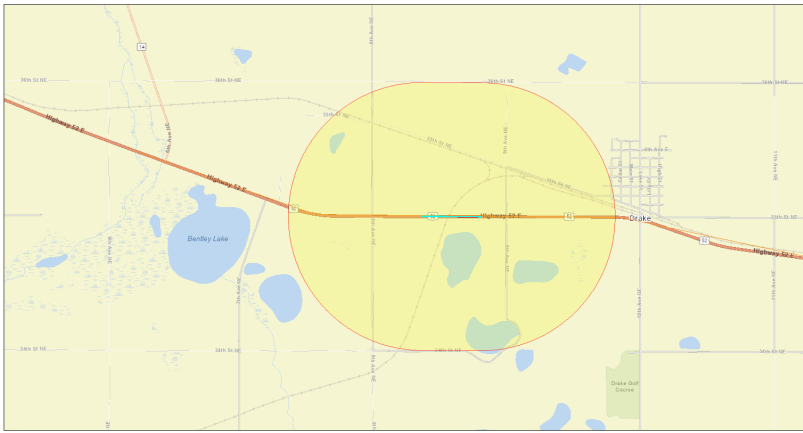
EJScreen Community Report

This report provides environmental and socioeconomic information for user-defined areas, and combines that data into environmental justice and supplemental indexes.

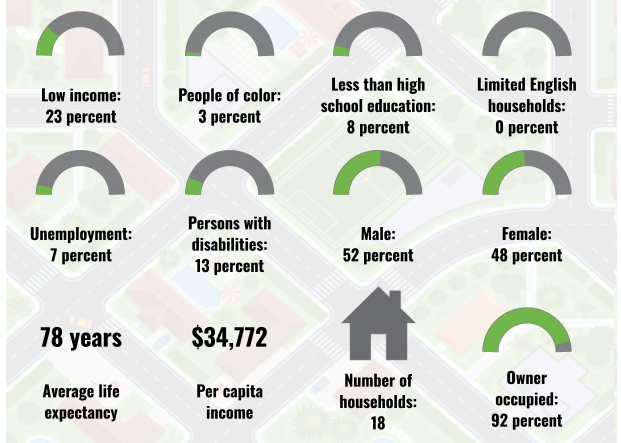
McHenry County, ND

1 mile Ring around the Corridor
 Population: 46
 Area in square miles: 4.04

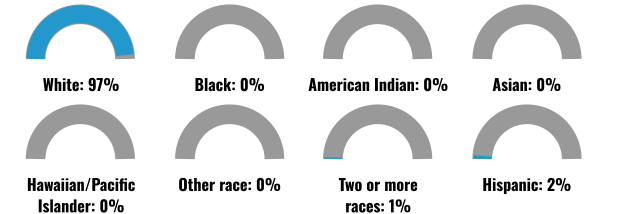
A3 Landscape



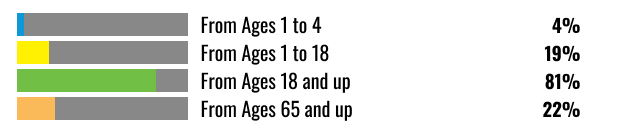
COMMUNITY INFORMATION



BREAKDOWN BY RACE



BREAKDOWN BY AGE



LIMITED ENGLISH SPEAKING BREAKDOWN



LANGUAGES SPOKEN AT HOME

LANGUAGE	PERCENT
No language data available.	

Notes: Numbers may not sum to totals due to rounding. Hispanic population can be of any race. Source: U.S. Census Bureau, American Community Survey (ACS) 2017-2021. Life expectancy data comes from the Centers for Disease Control.

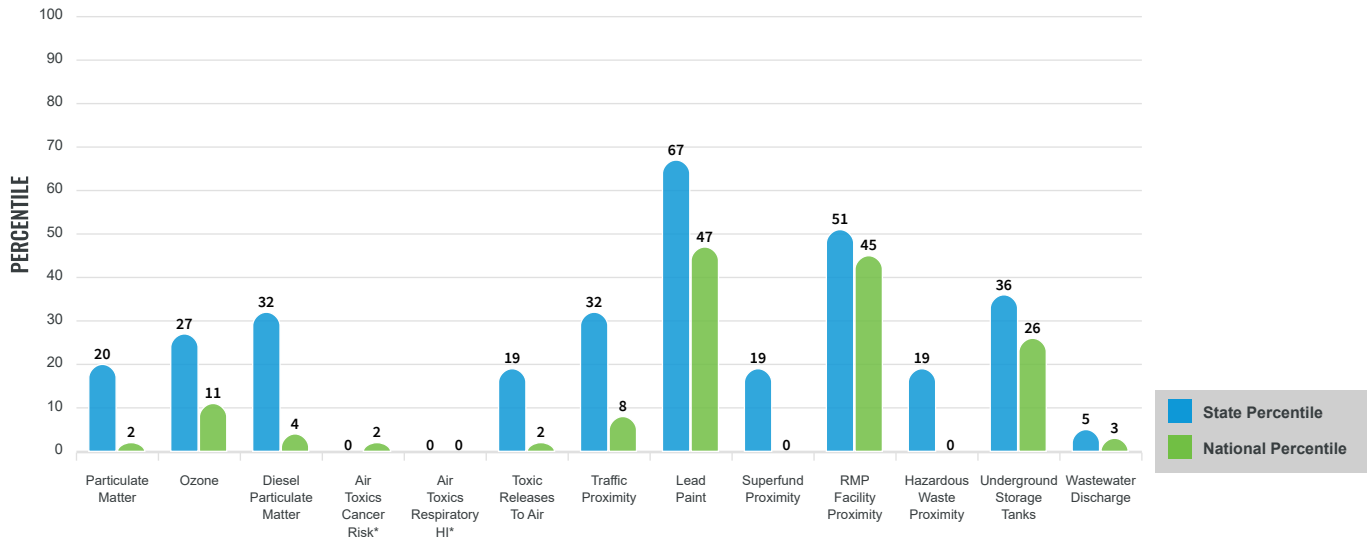
Environmental Justice & Supplemental Indexes

The environmental justice and supplemental indexes are a combination of environmental and socioeconomic information. There are thirteen EJ indexes and supplemental indexes in EJScreen reflecting the 13 environmental indicators. The indexes for a selected area are compared to those for all other locations in the state or nation. For more information and calculation details on the EJ and supplemental indexes, please visit the [EJScreen website](#).

EJ INDEXES

The EJ indexes help users screen for potential EJ concerns. To do this, the EJ index combines data on low income and people of color populations with a single environmental indicator.

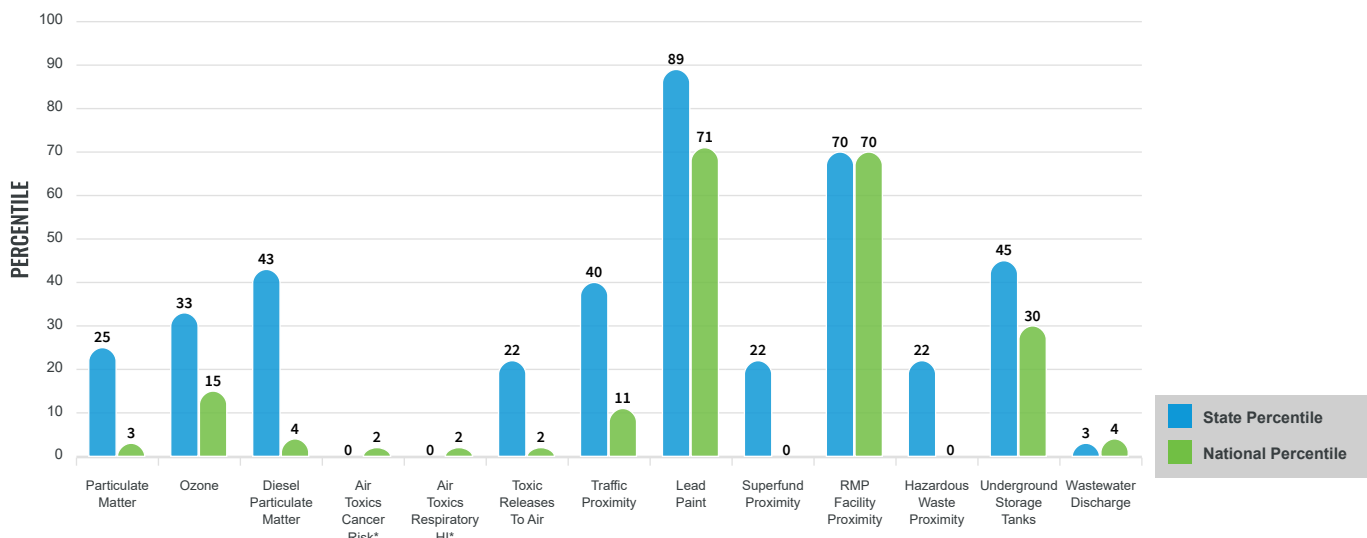
EJ INDEXES FOR THE SELECTED LOCATION



SUPPLEMENTAL INDEXES

The supplemental indexes offer a different perspective on community-level vulnerability. They combine data on percent low-income, percent linguistically isolated, percent less than high school education, percent unemployed, and low life expectancy with a single environmental indicator.

SUPPLEMENTAL INDEXES FOR THE SELECTED LOCATION



These percentiles provide perspective on how the selected block group or buffer area compares to the entire state or nation.

Report for 1 mile Ring around the Corridor

EJScreen Environmental and Socioeconomic Indicators Data

SELECTED VARIABLES	VALUE	STATE AVERAGE	PERCENTILE IN STATE	USA AVERAGE	PERCENTILE IN USA
POLLUTION AND SOURCES					
Particulate Matter (µg/m ³)	4.81	5.41	20	8.08	2
Ozone (ppb)	56.3	57.3	26	61.6	14
Diesel Particulate Matter (µg/m ³)	0.055	0.157	29	0.261	4
Air Toxics Cancer Risk* (lifetime risk per million)	10	16	0	25	1
Air Toxics Respiratory HI*	0.1	0.16	0	0.31	1
Toxic Releases to Air	0.072	460	18	4,600	2
Traffic Proximity (daily traffic count/distance to road)	3.2	85	28	210	9
Lead Paint (% Pre-1960 Housing)	0.65	0.29	92	0.3	83
Superfund Proximity (site count/km distance)	0.0025	0.0049	18	0.13	0
RMP Facility Proximity (facility count/km distance)	0.61	0.64	61	0.43	80
Hazardous Waste Proximity (facility count/km distance)	0.015	0.37	17	1.9	1
Underground Storage Tanks (count/km ²)	0.025	2.1	33	3.9	23
Wastewater Discharge (toxicity-weighted concentration/m distance)	1.1E-07	8.9	2	22	3
SOCIOECONOMIC INDICATORS					
Demographic Index	13%	21%	31	35%	16
Supplemental Demographic Index	12%	11%	62	14%	44
People of Color	3%	16%	14	39%	8
Low Income	23%	26%	45	31%	43
Unemployment Rate	7%	3%	87	6%	69
Limited English Speaking Households	0%	1%	73	5%	57
Less Than High School Education	8%	7%	67	12%	51
Under Age 5	4%	7%	30	6%	42
Over Age 64	22%	17%	72	17%	73
Low Life Expectancy	20%	18%	68	20%	54

*Diesel particulate matter, air toxics cancer risk, and air toxics respiratory hazard index are from the EPA's Air Toxics Data Update, which is the Agency's ongoing, comprehensive evaluation of air toxics in the United States. This effort aims to prioritize air toxics, emission sources, and locations of interest for further study. It is important to remember that the air toxics data presented here provide broad estimates of health risks over geographic areas of the country, not definitive risks to specific individuals or locations. Cancer risks and hazard indices from the Air Toxics Data Update are reported to one significant figure and any additional significant figures here are due to rounding. More information on the Air Toxics Data Update can be found at: <https://www.epa.gov/haps/air-toxics-data-update>.

Sites reporting to EPA within defined area:

Superfund	0
Hazardous Waste, Treatment, Storage, and Disposal Facilities	0
Water Dischargers	1
Air Pollution	0
Brownfields	0
Toxic Release Inventory	0

Other community features within defined area:

Schools	0
Hospitals	0
Places of Worship	0

Other environmental data:

Air Non-attainment	No
Impaired Waters	No

Selected location contains American Indian Reservation Lands*	No
Selected location contains a "Justice40 (CEJST)" disadvantaged community	No
Selected location contains an EPA IRA disadvantaged community	No

Report for 1 mile Ring around the Corridor

EJScreen Environmental and Socioeconomic Indicators Data

HEALTH INDICATORS					
INDICATOR	VALUE	STATE AVERAGE	STATE PERCENTILE	US AVERAGE	US PERCENTILE
Low Life Expectancy	20%	18%	68	20%	55
Heart Disease	7.9	6.4	78	6.1	83
Asthma	8.6	9.3	7	10	15
Cancer	8.7	6.8	84	6.1	94
Persons with Disabilities	14.3%	11.8%	75	13.4%	61

CLIMATE INDICATORS					
INDICATOR	VALUE	STATE AVERAGE	STATE PERCENTILE	US AVERAGE	US PERCENTILE
Flood Risk	11%	9%	69	12%	69
Wildfire Risk	2%	19%	58	14%	79

CRITICAL SERVICE GAPS					
INDICATOR	VALUE	STATE AVERAGE	STATE PERCENTILE	US AVERAGE	US PERCENTILE
Broadband Internet	20%	17%	66	14%	75
Lack of Health Insurance	5%	8%	37	9%	37
Housing Burden	No	N/A	N/A	N/A	N/A
Transportation Access	Yes	N/A	N/A	N/A	N/A
Food Desert	No	N/A	N/A	N/A	N/A

Report for 1 mile Ring around the Corridor



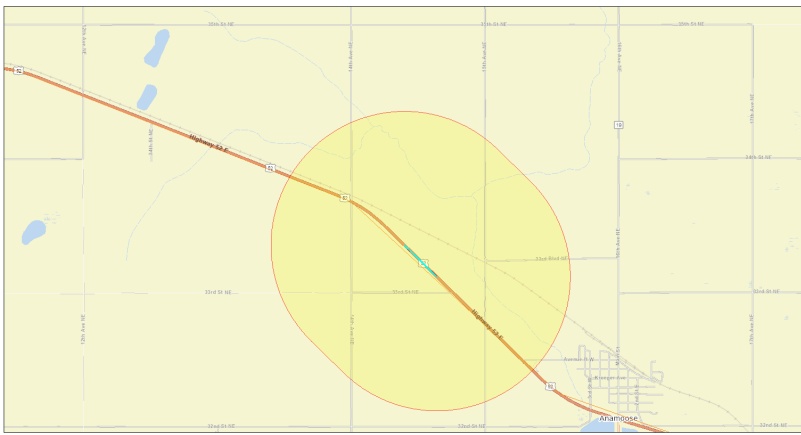
EJScreen Community Report

This report provides environmental and socioeconomic information for user-defined areas, and combines that data into environmental justice and supplemental indexes.

McHenry County, ND

1 mile Ring around the Corridor
 Population: 12
 Area in square miles: 3.82

A3 Landscape



April 27, 2024
 149.9
 us_52_project_area

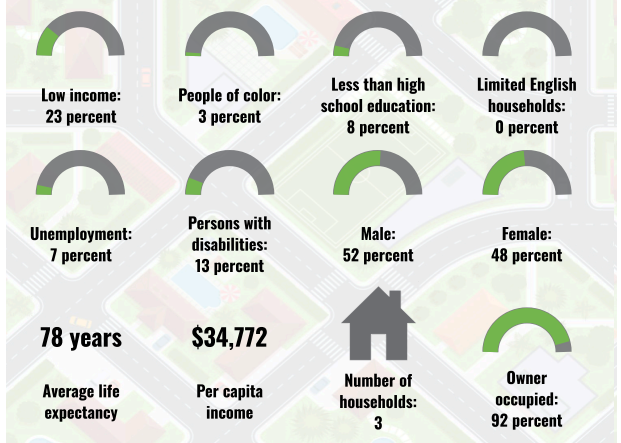
0 0.3 0.6 1.2 mi
 0 0.5 1 2 km

State of North Dakota, East, Northrup, Gannon, Salsburgh, Sanborn, Gannon, HETTINGER, SONG, EPA, HPIS, US Census Bureau, USDA, USFWS

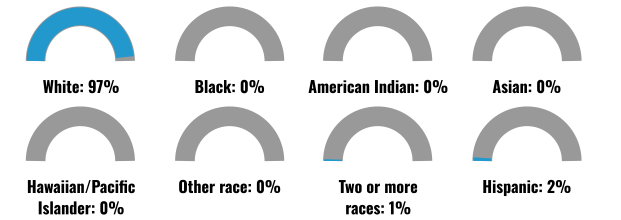
LANGUAGES SPOKEN AT HOME

LANGUAGE	PERCENT
No language data available.	

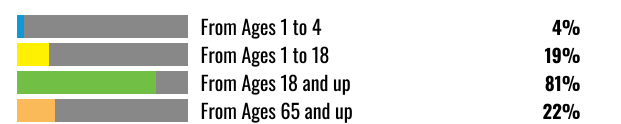
COMMUNITY INFORMATION



BREAKDOWN BY RACE



BREAKDOWN BY AGE



LIMITED ENGLISH SPEAKING BREAKDOWN



Notes: Numbers may not sum to totals due to rounding. Hispanic population can be of any race. Source: U.S. Census Bureau, American Community Survey (ACS) 2017-2021. Life expectancy data comes from the Centers for Disease Control.

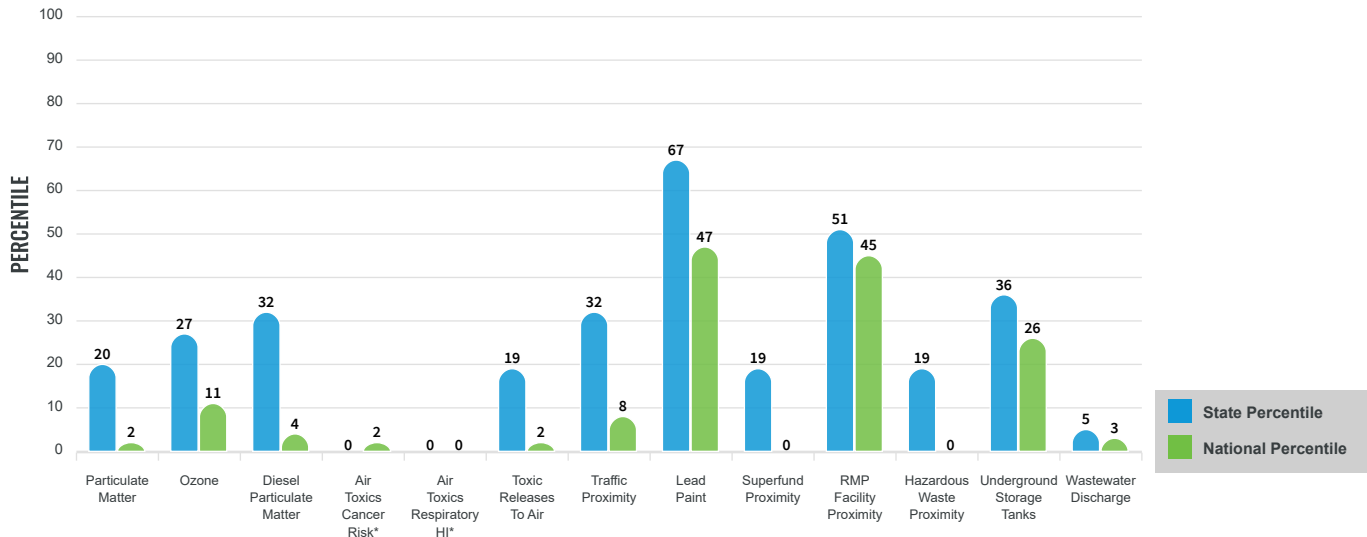
Environmental Justice & Supplemental Indexes

The environmental justice and supplemental indexes are a combination of environmental and socioeconomic information. There are thirteen EJ indexes and supplemental indexes in EJScreen reflecting the 13 environmental indicators. The indexes for a selected area are compared to those for all other locations in the state or nation. For more information and calculation details on the EJ and supplemental indexes, please visit the [EJScreen website](#).

EJ INDEXES

The EJ indexes help users screen for potential EJ concerns. To do this, the EJ index combines data on low income and people of color populations with a single environmental indicator.

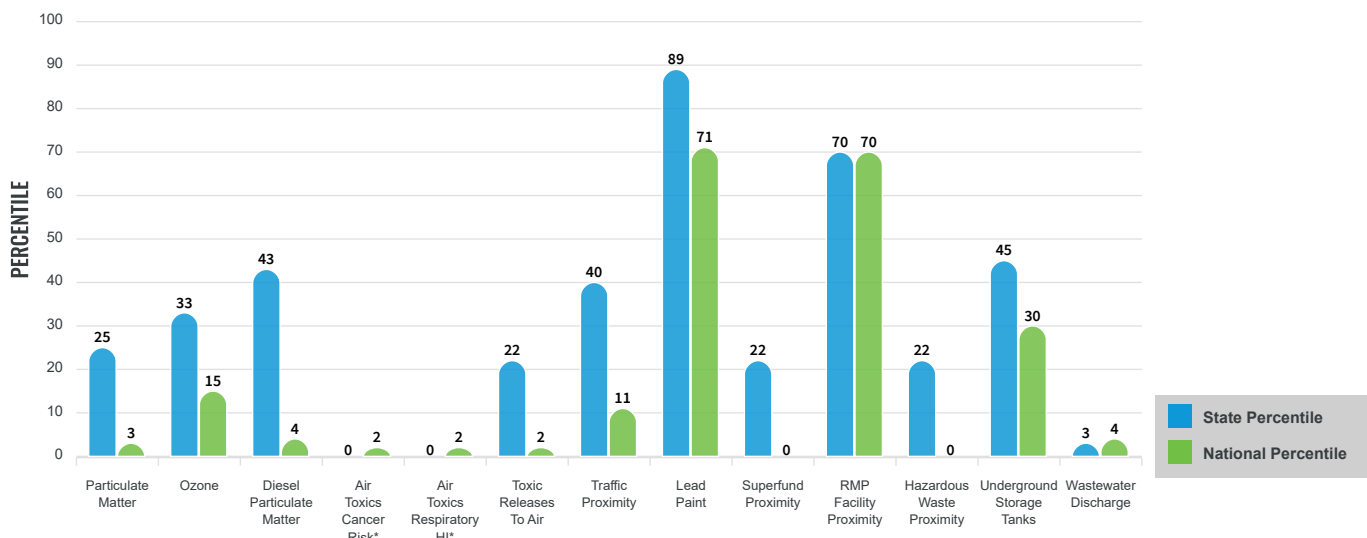
EJ INDEXES FOR THE SELECTED LOCATION



SUPPLEMENTAL INDEXES

The supplemental indexes offer a different perspective on community-level vulnerability. They combine data on percent low-income, percent linguistically isolated, percent less than high school education, percent unemployed, and low life expectancy with a single environmental indicator.

SUPPLEMENTAL INDEXES FOR THE SELECTED LOCATION



These percentiles provide perspective on how the selected block group or buffer area compares to the entire state or nation.

Report for 1 mile Ring around the Corridor

EJScreen Environmental and Socioeconomic Indicators Data

SELECTED VARIABLES	VALUE	STATE AVERAGE	PERCENTILE IN STATE	USA AVERAGE	PERCENTILE IN USA
POLLUTION AND SOURCES					
Particulate Matter (µg/m ³)	4.81	5.41	20	8.08	2
Ozone (ppb)	56.3	57.3	26	61.6	14
Diesel Particulate Matter (µg/m ³)	0.055	0.157	29	0.261	4
Air Toxics Cancer Risk* (lifetime risk per million)	10	16	0	25	1
Air Toxics Respiratory HI*	0.1	0.16	0	0.31	1
Toxic Releases to Air	0.072	460	18	4,600	2
Traffic Proximity (daily traffic count/distance to road)	3.2	85	28	210	9
Lead Paint (% Pre-1960 Housing)	0.65	0.29	92	0.3	83
Superfund Proximity (site count/km distance)	0.0025	0.0049	18	0.13	0
RMP Facility Proximity (facility count/km distance)	0.61	0.64	61	0.43	80
Hazardous Waste Proximity (facility count/km distance)	0.015	0.37	17	1.9	1
Underground Storage Tanks (count/km ²)	0.025	2.1	33	3.9	23
Wastewater Discharge (toxicity-weighted concentration/m distance)	1.1E-07	8.9	2	22	3
SOCIOECONOMIC INDICATORS					
Demographic Index	13%	21%	31	35%	16
Supplemental Demographic Index	12%	11%	62	14%	44
People of Color	3%	16%	14	39%	8
Low Income	23%	26%	45	31%	43
Unemployment Rate	7%	3%	87	6%	69
Limited English Speaking Households	0%	1%	73	5%	57
Less Than High School Education	8%	7%	67	12%	51
Under Age 5	4%	7%	30	6%	42
Over Age 64	22%	17%	72	17%	73
Low Life Expectancy	20%	18%	68	20%	54

*Diesel particulate matter, air toxics cancer risk, and air toxics respiratory hazard index are from the EPA's Air Toxics Data Update, which is the Agency's ongoing, comprehensive evaluation of air toxics in the United States. This effort aims to prioritize air toxics, emission sources, and locations of interest for further study. It is important to remember that the air toxics data presented here provide broad estimates of health risks over geographic areas of the country, not definitive risks to specific individuals or locations. Cancer risks and hazard indices from the Air Toxics Data Update are reported to one significant figure and any additional significant figures here are due to rounding. More information on the Air Toxics Data Update can be found at: <https://www.epa.gov/haps/air-toxics-data-update>.

Sites reporting to EPA within defined area:

Superfund	0
Hazardous Waste, Treatment, Storage, and Disposal Facilities	0
Water Dischargers	0
Air Pollution	0
Brownfields	0
Toxic Release Inventory	0

Other community features within defined area:

Schools	0
Hospitals	0
Places of Worship	0

Other environmental data:

Air Non-attainment	No
Impaired Waters	No

Selected location contains American Indian Reservation Lands*	No
Selected location contains a "Justice40 (CEJST)" disadvantaged community	No
Selected location contains an EPA IRA disadvantaged community	No

Report for 1 mile Ring around the Corridor

EJScreen Environmental and Socioeconomic Indicators Data

HEALTH INDICATORS					
INDICATOR	VALUE	STATE AVERAGE	STATE PERCENTILE	US AVERAGE	US PERCENTILE
Low Life Expectancy	20%	18%	68	20%	55
Heart Disease	7.9	6.4	78	6.1	83
Asthma	8.6	9.3	7	10	15
Cancer	8.7	6.8	84	6.1	94
Persons with Disabilities	14.3%	11.8%	75	13.4%	61

CLIMATE INDICATORS					
INDICATOR	VALUE	STATE AVERAGE	STATE PERCENTILE	US AVERAGE	US PERCENTILE
Flood Risk	11%	9%	69	12%	69
Wildfire Risk	2%	19%	58	14%	79

CRITICAL SERVICE GAPS					
INDICATOR	VALUE	STATE AVERAGE	STATE PERCENTILE	US AVERAGE	US PERCENTILE
Broadband Internet	20%	17%	66	14%	75
Lack of Health Insurance	5%	8%	37	9%	37
Housing Burden	No	N/A	N/A	N/A	N/A
Transportation Access	Yes	N/A	N/A	N/A	N/A
Food Desert	No	N/A	N/A	N/A	N/A

Report for 1 mile Ring around the Corridor



EJScreen Community Report

This report provides environmental and socioeconomic information for user-defined areas, and combines that data into environmental justice and supplemental indexes.

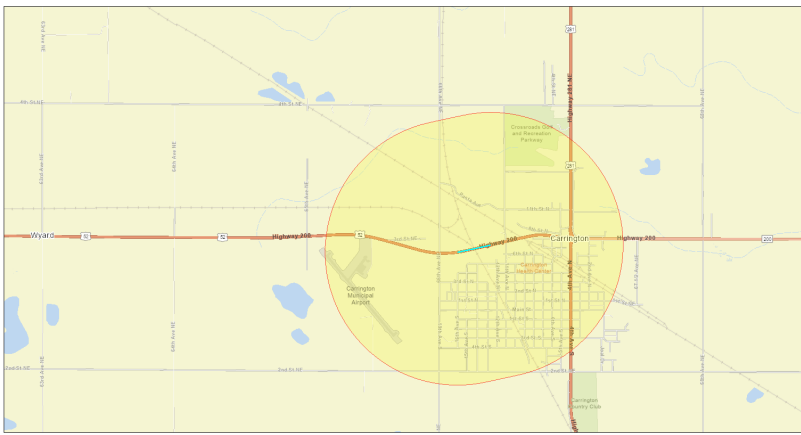
Carrington, ND

1 mile Ring around the Corridor

Population: 1,805

Area in square miles: 3.65

A3 Landscape

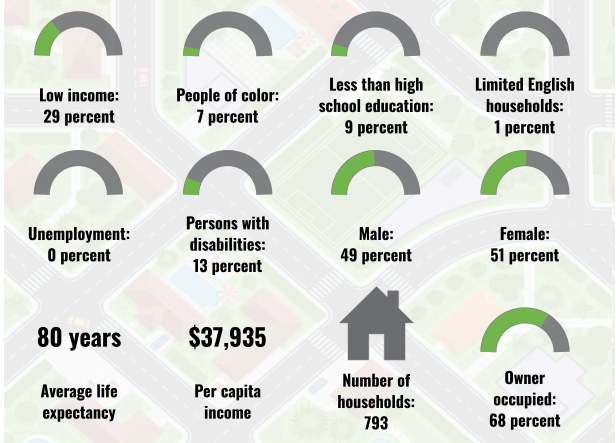


April 27, 2024
RP222.D
us_s2_project_area

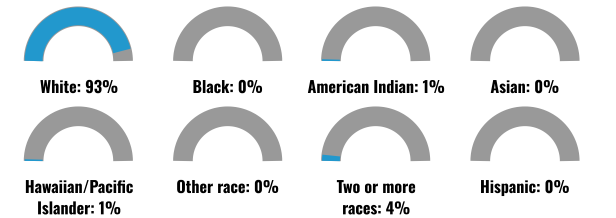
1.36, 112, 1.2 miles
0 0.3 0.6 1.2 kilometers

State of North Dakota, East, North, Green, Satellite, GeoParquet, Geo, METADATA, USGS, EPA, NPS, US Census Bureau, USDA, USFWS

COMMUNITY INFORMATION



BREAKDOWN BY RACE



BREAKDOWN BY AGE



LIMITED ENGLISH SPEAKING BREAKDOWN



LANGUAGES SPOKEN AT HOME

LANGUAGE	PERCENT
English	99%
German or other West Germanic	1%
Total Non-English	1%

Notes: Numbers may not sum to totals due to rounding. Hispanic population can be of any race. Source: U.S. Census Bureau, American Community Survey (ACS) 2017-2021. Life expectancy data comes from the Centers for Disease Control.

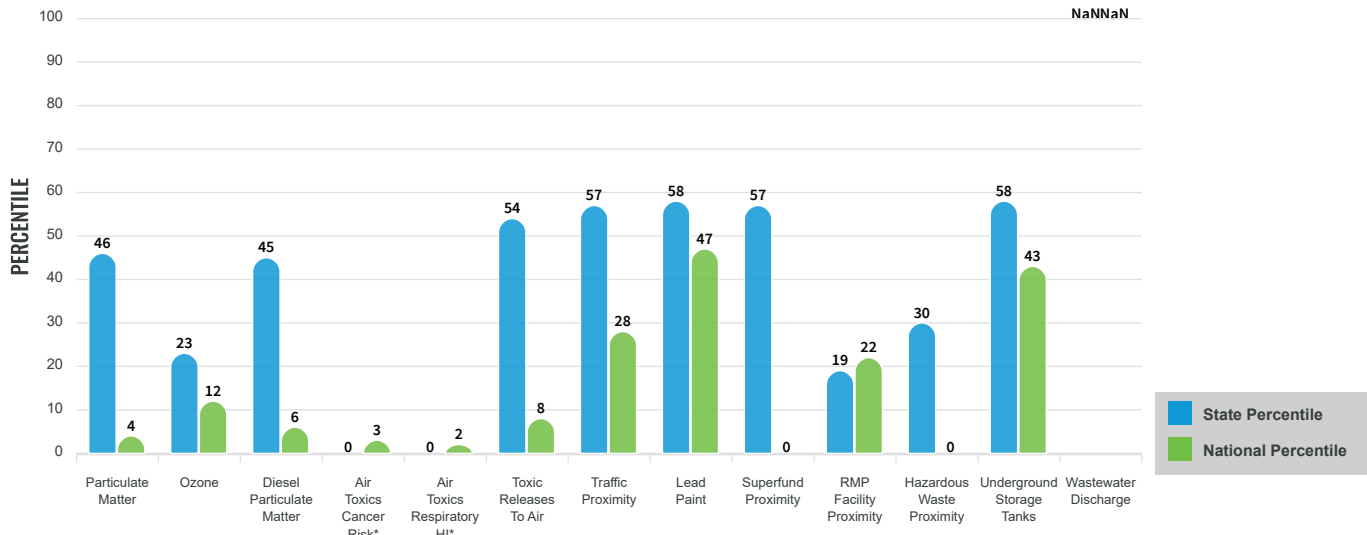
Environmental Justice & Supplemental Indexes

The environmental justice and supplemental indexes are a combination of environmental and socioeconomic information. There are thirteen EJ indexes and supplemental indexes in EJScreen reflecting the 13 environmental indicators. The indexes for a selected area are compared to those for all other locations in the state or nation. For more information and calculation details on the EJ and supplemental indexes, please visit the [EJScreen website](#).

EJ INDEXES

The EJ indexes help users screen for potential EJ concerns. To do this, the EJ index combines data on low income and people of color populations with a single environmental indicator.

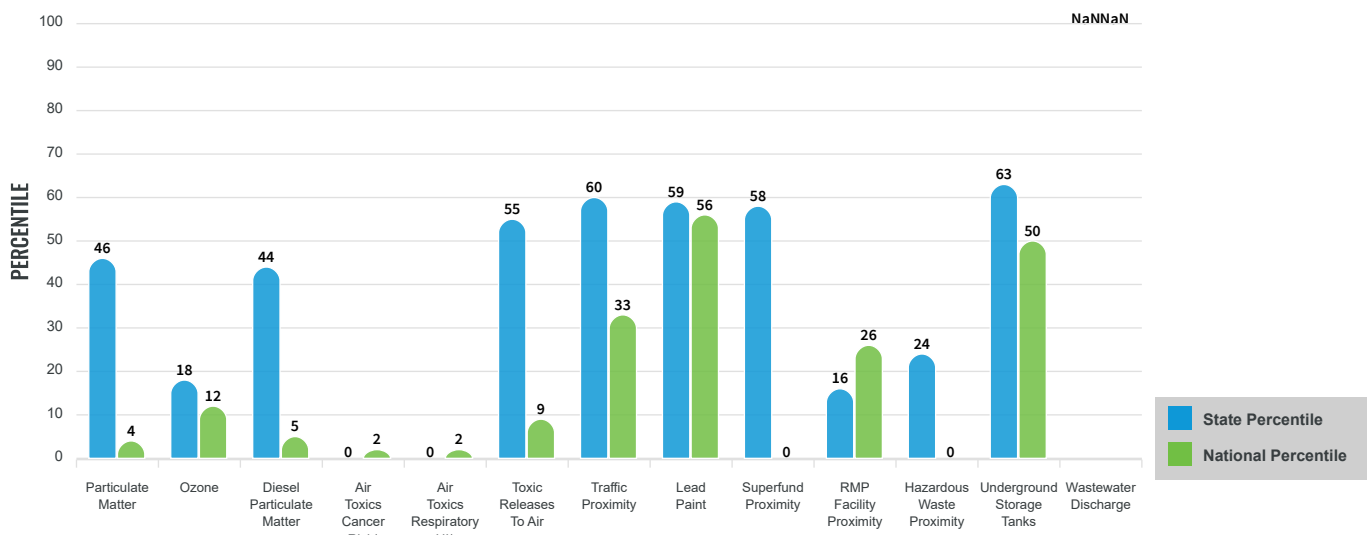
EJ INDEXES FOR THE SELECTED LOCATION



SUPPLEMENTAL INDEXES

The supplemental indexes offer a different perspective on community-level vulnerability. They combine data on percent low-income, percent linguistically isolated, percent less than high school education, percent unemployed, and low life expectancy with a single environmental indicator.

SUPPLEMENTAL INDEXES FOR THE SELECTED LOCATION



These percentiles provide perspective on how the selected block group or buffer area compares to the entire state or nation.

Report for 1 mile Ring around the Corridor

EJScreen Environmental and Socioeconomic Indicators Data

SELECTED VARIABLES	VALUE	STATE AVERAGE	PERCENTILE IN STATE	USA AVERAGE	PERCENTILE IN USA
POLLUTION AND SOURCES					
Particulate Matter (µg/m ³)	5.05	5.41	36	8.08	3
Ozone (ppb)	55.7	57.3	16	61.6	11
Diesel Particulate Matter (µg/m ³)	0.0551	0.157	30	0.261	5
Air Toxics Cancer Risk* (lifetime risk per million)	10	16	0	25	1
Air Toxics Respiratory HI*	0.1	0.16	0	0.31	1
Toxic Releases to Air	7.7	460	42	4,600	8
Traffic Proximity (daily traffic count/distance to road)	28	85	49	210	29
Lead Paint (% Pre-1960 Housing)	0.31	0.29	54	0.3	59
Superfund Proximity (site count/km distance)	0.0035	0.0049	49	0.13	0
RMP Facility Proximity (facility count/km distance)	0.08	0.64	11	0.43	22
Hazardous Waste Proximity (facility count/km distance)	0.015	0.37	18	1.9	1
Underground Storage Tanks (count/km ²)	0.94	2.1	55	3.9	47
Wastewater Discharge (toxicity-weighted concentration/m distance)	N/A	8.9	N/A	22	N/A
SOCIOECONOMIC INDICATORS					
Demographic Index	18%	21%	54	35%	28
Supplemental Demographic Index	11%	11%	59	14%	43
People of Color	7%	16%	36	39%	16
Low Income	29%	26%	65	31%	54
Unemployment Rate	0%	3%	0	6%	0
Limited English Speaking Households	1%	1%	76	5%	58
Less Than High School Education	9%	7%	71	12%	55
Under Age 5	6%	7%	47	6%	57
Over Age 64	22%	17%	71	17%	73
Low Life Expectancy	18%	18%	42	20%	32

*Diesel particulate matter, air toxics cancer risk, and air toxics respiratory hazard index are from the EPA's Air Toxics Data Update, which is the Agency's ongoing, comprehensive evaluation of air toxics in the United States. This effort aims to prioritize air toxics, emission sources, and locations of interest for further study. It is important to remember that the air toxics data presented here provide broad estimates of health risks over geographic areas of the country, not definitive risks to specific individuals or locations. Cancer risks and hazard indices from the Air Toxics Data Update are reported to one significant figure and any additional significant figures here are due to rounding. More information on the Air Toxics Data Update can be found at: <https://www.epa.gov/haps/air-toxics-data-update>.

Sites reporting to EPA within defined area:

Superfund	0
Hazardous Waste, Treatment, Storage, and Disposal Facilities	0
Water Dischargers	4
Air Pollution	1
Brownfields	3
Toxic Release Inventory	1

Other community features within defined area:

Schools	2
Hospitals	1
Places of Worship	0

Other environmental data:

Air Non-attainment	No
Impaired Waters	Yes

Selected location contains American Indian Reservation Lands*	No
Selected location contains a "Justice40 (CEJST)" disadvantaged community	No
Selected location contains an EPA IRA disadvantaged community	No

Report for 1 mile Ring around the Corridor

EJScreen Environmental and Socioeconomic Indicators Data

HEALTH INDICATORS					
INDICATOR	VALUE	STATE AVERAGE	STATE PERCENTILE	US AVERAGE	US PERCENTILE
Low Life Expectancy	18%	18%	42	20%	32
Heart Disease	8.2	6.4	82	6.1	86
Asthma	8.9	9.3	31	10	22
Cancer	8.9	6.8	86	6.1	95
Persons with Disabilities	12.7%	11.8%	64	13.4%	51

CLIMATE INDICATORS					
INDICATOR	VALUE	STATE AVERAGE	STATE PERCENTILE	US AVERAGE	US PERCENTILE
Flood Risk	7%	9%	47	12%	51
Wildfire Risk	0%	19%	0	14%	0

CRITICAL SERVICE GAPS					
INDICATOR	VALUE	STATE AVERAGE	STATE PERCENTILE	US AVERAGE	US PERCENTILE
Broadband Internet	19%	17%	63	14%	73
Lack of Health Insurance	3%	8%	18	9%	23
Housing Burden	No	N/A	N/A	N/A	N/A
Transportation Access	No	N/A	N/A	N/A	N/A
Food Desert	No	N/A	N/A	N/A	N/A

Report for 1 mile Ring around the Corridor



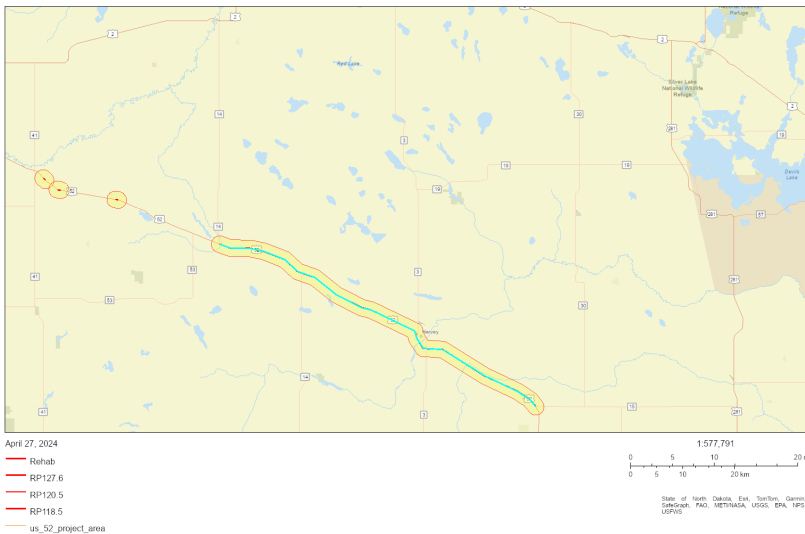
EJScreen Community Report

This report provides environmental and socioeconomic information for user-defined areas, and combines that data into environmental justice and supplemental indexes.

Wells County, ND

1 mile Ring around the Corridor
 Population: 2,840
 Area in square miles: 90.97

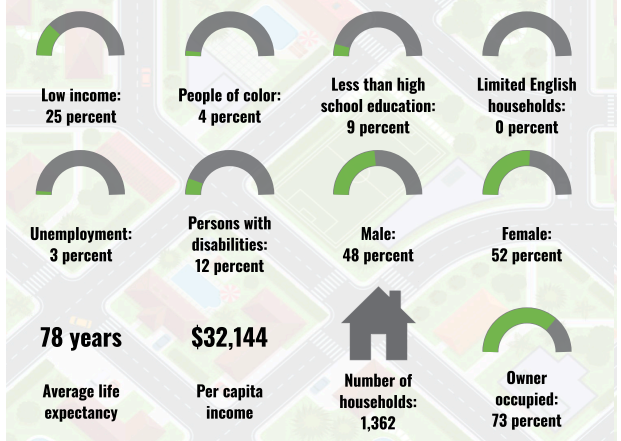
A3 Landscape



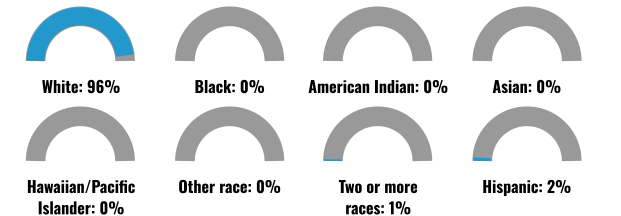
LANGUAGES SPOKEN AT HOME

LANGUAGE	PERCENT
English	97%
Spanish	2%
German or other West Germanic	1%
Total Non-English	3%

COMMUNITY INFORMATION



BREAKDOWN BY RACE



BREAKDOWN BY AGE



LIMITED ENGLISH SPEAKING BREAKDOWN



Notes: Numbers may not sum to totals due to rounding. Hispanic population can be of any race. Source: U.S. Census Bureau, American Community Survey (ACS) 2017-2021. Life expectancy data comes from the Centers for Disease Control.

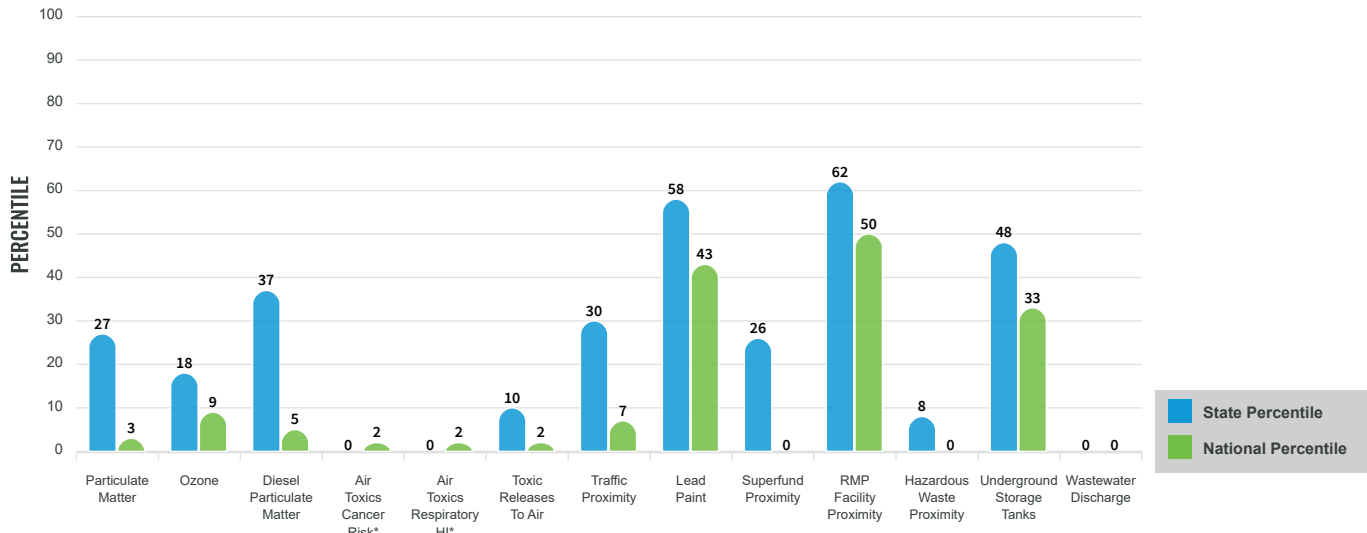
Environmental Justice & Supplemental Indexes

The environmental justice and supplemental indexes are a combination of environmental and socioeconomic information. There are thirteen EJ indexes and supplemental indexes in EJScreen reflecting the 13 environmental indicators. The indexes for a selected area are compared to those for all other locations in the state or nation. For more information and calculation details on the EJ and supplemental indexes, please visit the [EJScreen website](#).

EJ INDEXES

The EJ indexes help users screen for potential EJ concerns. To do this, the EJ index combines data on low income and people of color populations with a single environmental indicator.

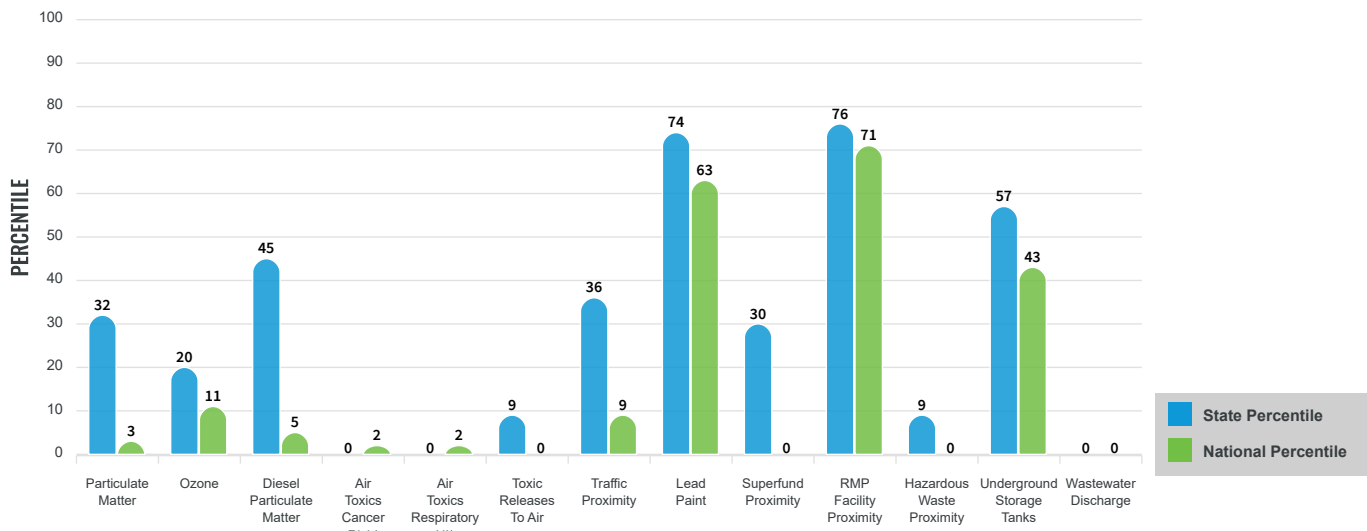
EJ INDEXES FOR THE SELECTED LOCATION



SUPPLEMENTAL INDEXES

The supplemental indexes offer a different perspective on community-level vulnerability. They combine data on percent low-income, percent linguistically isolated, percent less than high school education, percent unemployed, and low life expectancy with a single environmental indicator.

SUPPLEMENTAL INDEXES FOR THE SELECTED LOCATION



These percentiles provide perspective on how the selected block group or buffer area compares to the entire state or nation.

Report for 1 mile Ring around the Corridor

EJScreen Environmental and Socioeconomic Indicators Data

SELECTED VARIABLES	VALUE	STATE AVERAGE	PERCENTILE IN STATE	USA AVERAGE	PERCENTILE IN USA
POLLUTION AND SOURCES					
Particulate Matter (µg/m ³)	4.86	5.41	24	8.08	2
Ozone (ppb)	55.5	57.3	15	61.6	10
Diesel Particulate Matter (µg/m ³)	0.056	0.157	31	0.261	5
Air Toxics Cancer Risk* (lifetime risk per million)	10	16	0	25	1
Air Toxics Respiratory HI*	0.1	0.16	0	0.31	1
Toxic Releases to Air	0.68	460	32	4,600	4
Traffic Proximity (daily traffic count/distance to road)	3.1	85	27	210	8
Lead Paint (% Pre-1960 Housing)	0.45	0.29	74	0.3	70
Superfund Proximity (site count/km distance)	0.0028	0.0049	23	0.13	0
RMP Facility Proximity (facility count/km distance)	1	0.64	78	0.43	89
Hazardous Waste Proximity (facility count/km distance)	0.011	0.37	8	1.9	0
Underground Storage Tanks (count/km ²)	0.96	2.1	55	3.9	47
Wastewater Discharge (toxicity-weighted concentration/m distance)	2.3E-08	8.9	1	22	2
SOCIOECONOMIC INDICATORS					
Demographic Index	14%	21%	36	35%	19
Supplemental Demographic Index	11%	11%	60	14%	43
People of Color	4%	16%	18	39%	10
Low Income	25%	26%	51	31%	46
Unemployment Rate	3%	3%	58	6%	38
Limited English Speaking Households	0%	1%	72	5%	0
Less Than High School Education	9%	7%	72	12%	56
Under Age 5	5%	7%	38	6%	49
Over Age 64	27%	17%	85	17%	84
Low Life Expectancy	21%	18%	78	20%	63

*Diesel particulate matter, air toxics cancer risk, and air toxics respiratory hazard index are from the EPA's Air Toxics Data Update, which is the Agency's ongoing, comprehensive evaluation of air toxics in the United States. This effort aims to prioritize air toxics, emission sources, and locations of interest for further study. It is important to remember that the air toxics data presented here provide broad estimates of health risks over geographic areas of the country, not definitive risks to specific individuals or locations. Cancer risks and hazard indices from the Air Toxics Data Update are reported to one significant figure and any additional significant figures here are due to rounding. More information on the Air Toxics Data Update can be found at: <https://www.epa.gov/haps/air-toxics-data-update>.

Sites reporting to EPA within defined area:

Superfund	0
Hazardous Waste, Treatment, Storage, and Disposal Facilities	0
Water Dischargers	12
Air Pollution	2
Brownfields	6
Toxic Release Inventory	0

Other community features within defined area:

Schools	6
Hospitals	1
Places of Worship	0

Other environmental data:

Air Non-attainment	No
Impaired Waters	Yes

Selected location contains American Indian Reservation Lands*	No
Selected location contains a "Justice40 (CEJST)" disadvantaged community	No
Selected location contains an EPA IRA disadvantaged community	No

Report for 1 mile Ring around the Corridor

EJScreen Environmental and Socioeconomic Indicators Data

HEALTH INDICATORS					
INDICATOR	VALUE	STATE AVERAGE	STATE PERCENTILE	US AVERAGE	US PERCENTILE
Low Life Expectancy	21%	18%	78	20%	63
Heart Disease	9.2	6.4	91	6.1	93
Asthma	8.8	9.3	12	10	17
Cancer	9.9	6.8	97	6.1	98
Persons with Disabilities	12.9%	11.8%	65	13.4%	52

CLIMATE INDICATORS					
INDICATOR	VALUE	STATE AVERAGE	STATE PERCENTILE	US AVERAGE	US PERCENTILE
Flood Risk	11%	9%	69	12%	69
Wildfire Risk	1%	19%	54	14%	79

CRITICAL SERVICE GAPS					
INDICATOR	VALUE	STATE AVERAGE	STATE PERCENTILE	US AVERAGE	US PERCENTILE
Broadband Internet	22%	17%	71	14%	77
Lack of Health Insurance	5%	8%	33	9%	34
Housing Burden	No	N/A	N/A	N/A	N/A
Transportation Access	Yes	N/A	N/A	N/A	N/A
Food Desert	Yes	N/A	N/A	N/A	N/A

Report for 1 mile Ring around the Corridor