

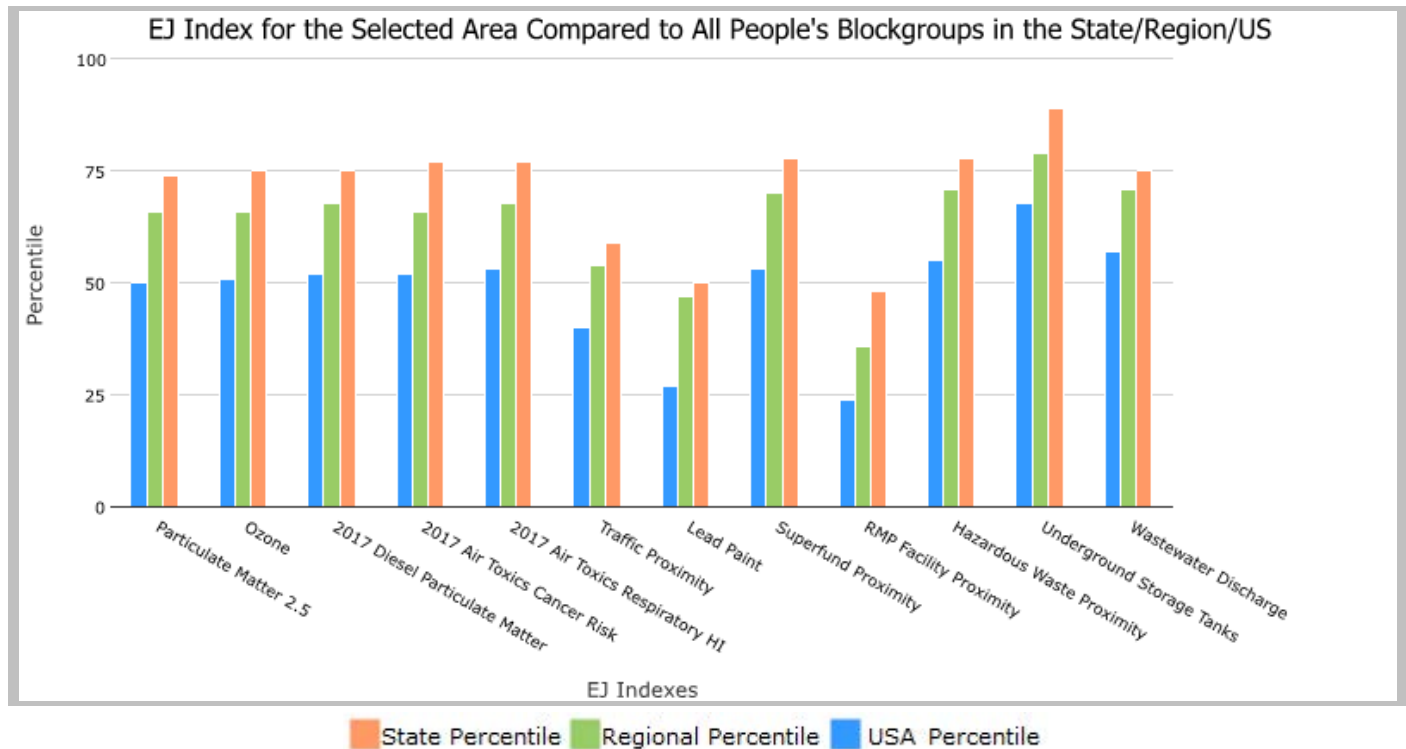
## 1 mile Ring around the Corridor, MINNESOTA, EPA Region 5

Approximate Population: 15,949

Input Area (sq. miles): 12.94

### Project Corridor

Selected Variables	State Percentile	EPA Region Percentile	USA Percentile
<b>Environmental Justice Indexes</b>			
EJ Index for Particulate Matter 2.5	74	66	50
EJ Index for Ozone	75	66	51
EJ Index for 2017 Diesel Particulate Matter*	75	68	52
EJ Index for 2017 Air Toxics Cancer Risk*	77	66	52
EJ Index for 2017 Air Toxics Respiratory HI*	77	68	53
EJ Index for Traffic Proximity	59	54	40
EJ Index for Lead Paint	50	47	27
EJ Index for Superfund Proximity	78	70	53
EJ Index for RMP Facility Proximity	48	36	24
EJ Index for Hazardous Waste Proximity	78	71	55
EJ Index for Underground Storage Tanks	89	79	68
EJ Index for Wastewater Discharge	75	71	57



This report shows the values for environmental and demographic indicators and EJSCREEN indexes. It shows environmental and demographic raw data (e.g., the estimated concentration of ozone in the air), and also shows what percentile each raw data value represents. These percentiles provide perspective on how the selected block group or buffer area compares to the entire state, EPA region, or nation. For example, if a given location is at the 95th percentile nationwide, this means that only 5 percent of the US population has a higher block group value than the average person in the location being analyzed. The years for which the data are available, and the methods used, vary across these indicators. Important caveats and uncertainties apply to this screening-level information, so it is essential to understand the limitations on appropriate interpretations and applications of these indicators. Please see EJSCREEN documentation for discussion of these issues before using reports.

# EJScreen Report (Version 2.0)

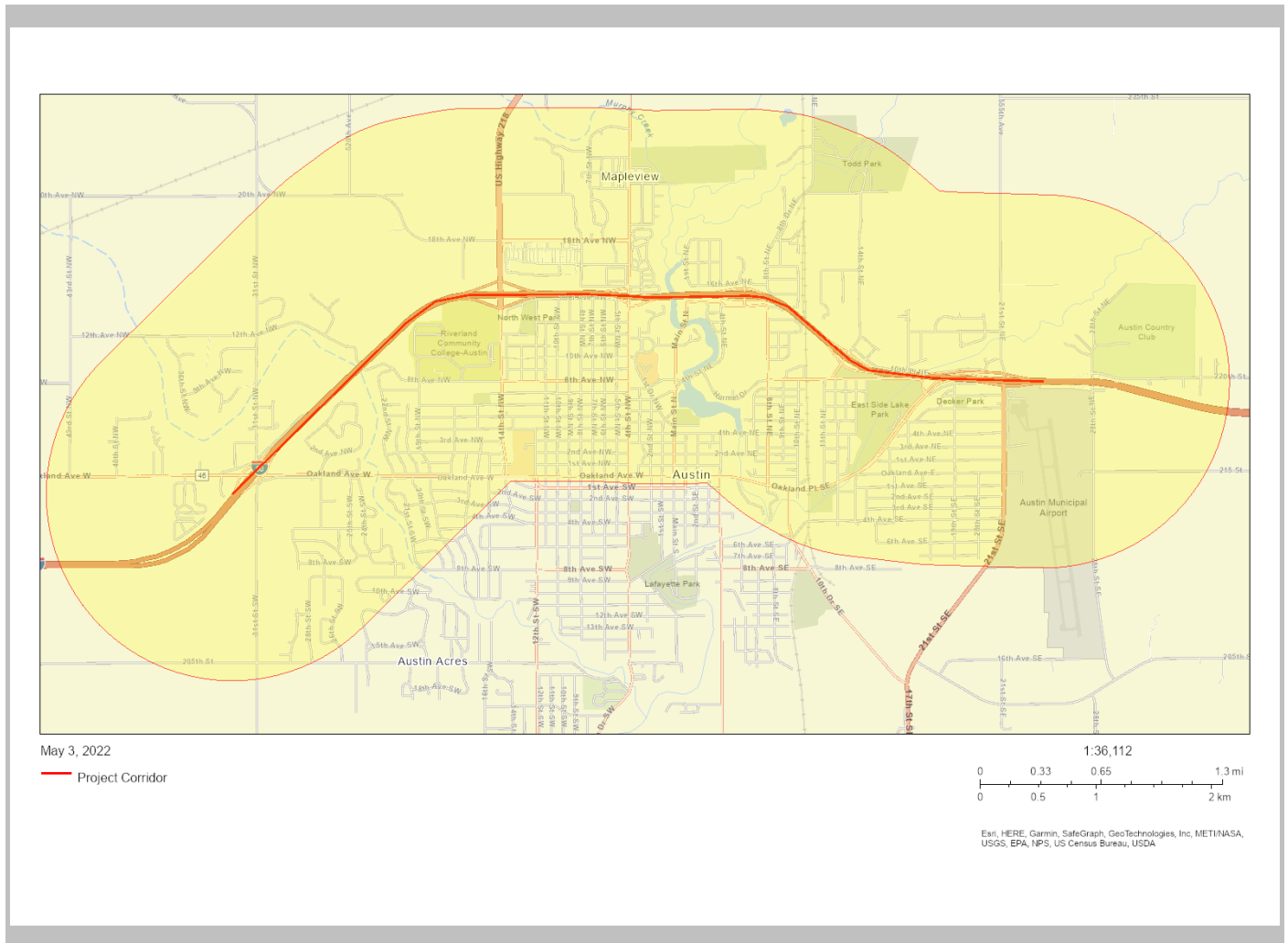


1 mile Ring around the Corridor, MINNESOTA, EPA Region 5

Approximate Population: 15,949

Input Area (sq. miles): 12.94

Project Corridor



Sites reporting to EPA	
Superfund NPL	0
Hazardous Waste Treatment, Storage, and Disposal Facilities (TSDF)	0

## EJScreen Report (Version 2.0)

1 mile Ring around the Corridor, MINNESOTA, EPA Region 5

Approximate Population: 15,949

Input Area (sq. miles): 12.94

### Project Corridor

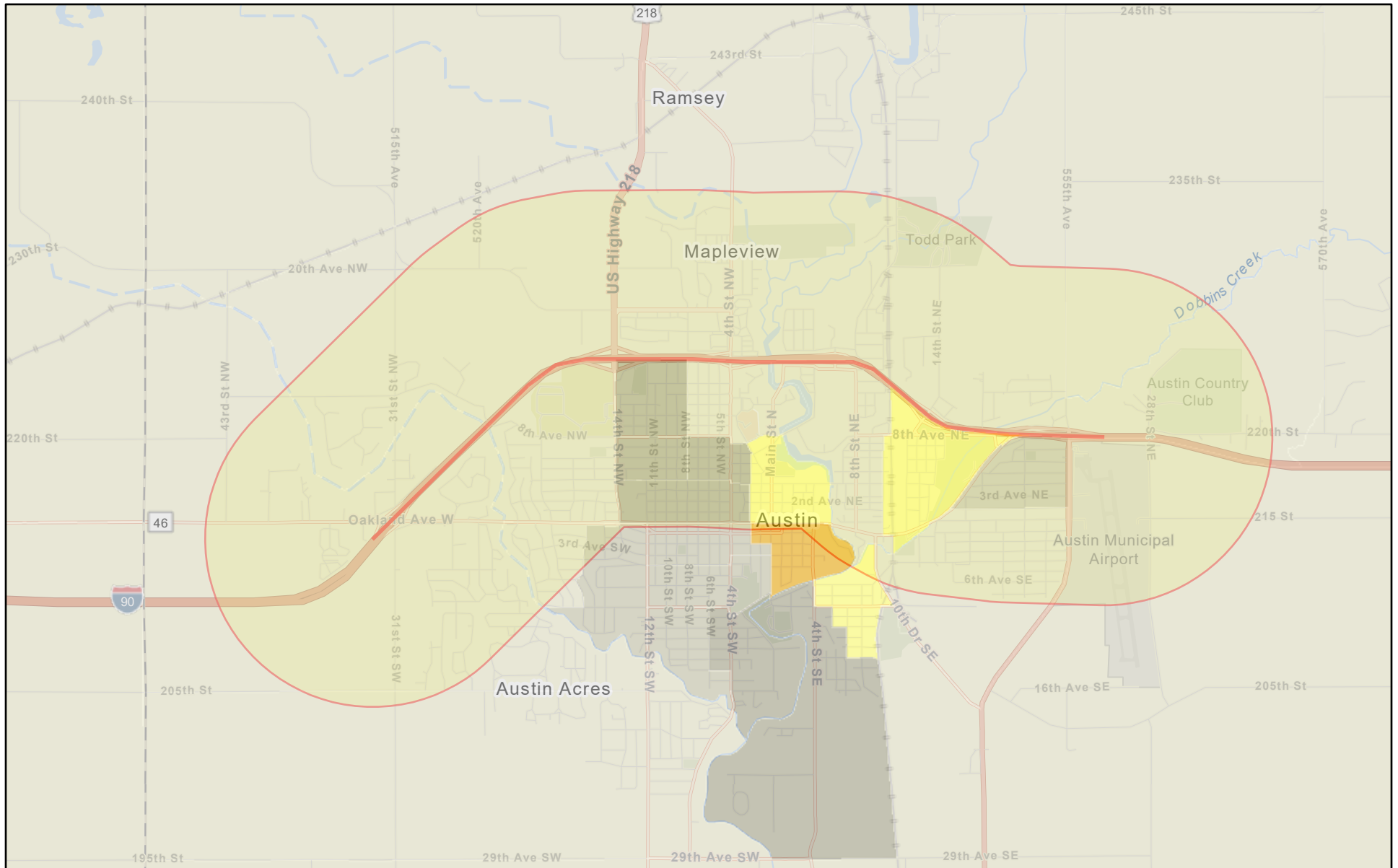
Selected Variables	Value	State Avg.	%ile in State	EPA Region Avg.	%ile in EPA Region	USA Avg.	%ile in USA
<b>Pollution and Sources</b>							
Particulate Matter 2.5 ( $\mu\text{g}/\text{m}^3$ )	8.22	7.54	80	8.96	19	8.74	39
Ozone (ppb)	39	37.8	84	43.5	11	42.6	26
2017 Diesel Particulate Matter* ( $\mu\text{g}/\text{m}^3$ )	0.126	0.218	33	0.279	<50th	0.295	<50th
2017 Air Toxics Cancer Risk* (lifetime risk per million)	20	24	56	24	60-70th	29	<50th
2017 Air Toxics Respiratory HI*	0.2	0.29	36	0.3	<50th	0.36	<50th
Traffic Proximity (daily traffic count/distance to road)	210	470	64	610	47	710	49
Lead Paint (% Pre-1960 Housing)	0.6	0.31	82	0.37	75	0.28	83
Superfund Proximity (site count/km distance)	0.016	0.18	16	0.13	6	0.13	13
RMP Facility Proximity (facility count/km distance)	1.8	0.77	88	0.83	87	0.75	89
Hazardous Waste Proximity (facility count/km distance)	0.045	1.5	12	1.8	4	2.2	6
Underground Storage Tanks (count/km <sup>2</sup> )	2.1	1.8	75	4.8	57	3.9	60
Wastewater Discharge (toxicity-weighted concentration/m distance)	2.4E-06	0.034	20	9	10	12	11
<b>Socioeconomic Indicators</b>							
Demographic Index	33%	22%	80	28%	71	36%	55
People of Color	28%	20%	74	26%	67	40%	45
Low Income	38%	24%	81	29%	71	31%	67
Unemployment Rate	4%	4%	72	5%	57	5%	52
Linguistically Isolated	11%	2%	94	2%	93	5%	84
Less Than High School Education	14%	7%	87	10%	78	12%	68
Under Age 5	8%	6%	68	6%	71	6%	69
Over Age 64	19%	15%	69	16%	66	16%	69

\*Diesel particulate matter, air toxics cancer risk, and air toxics respiratory hazard index are from the EPA's 2017 Air Toxics Data Update, which is the Agency's ongoing, comprehensive evaluation of air toxics in the United States. This effort aims to prioritize air toxics, emission sources, and locations of interest for further study. It is important to remember that the air toxics data presented here provide broad estimates of health risks over geographic areas of the country, not definitive risks to specific individuals or locations. Cancer risks and hazard indices from the Air Toxics Data Update are reported to one significant figure and any additional significant figures here are due to rounding. More information on the Air Toxics Data Update can be found at: <https://www.epa.gov/haps/air-toxics-data-update>.

For additional information, see: [www.epa.gov/environmentaljustice](http://www.epa.gov/environmentaljustice)

EJScreen is a screening tool for pre-decisional use only. It can help identify areas that may warrant additional consideration, analysis, or outreach. It does not provide a basis for decision-making, but it may help identify potential areas of EJ concern. Users should keep in mind that screening tools are subject to substantial uncertainty in their demographic and environmental data, particularly when looking at small geographic areas. Important caveats and uncertainties apply to this screening-level information, so it is essential to understand the limitations on appropriate interpretations and applications of these indicators. Please see EJScreen documentation for discussion of these issues before using reports. This screening tool does not provide data on every environmental impact and demographic factor that may be relevant to a particular location. EJScreen outputs should be supplemented with additional information and local knowledge before taking any action to address potential EJ concerns.

# Demographic Index



5/3/2022

EJSCREEN\_Indexes

- Data not available
- Less than 50 percentile

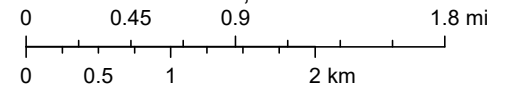
- 50 -60 percentile
- 60 -70 percentile
- 70 -80 percentile

- 80 - 90 percentile
- 90 - 95 percentile

- 95 - 100 percentile

Project Corridor

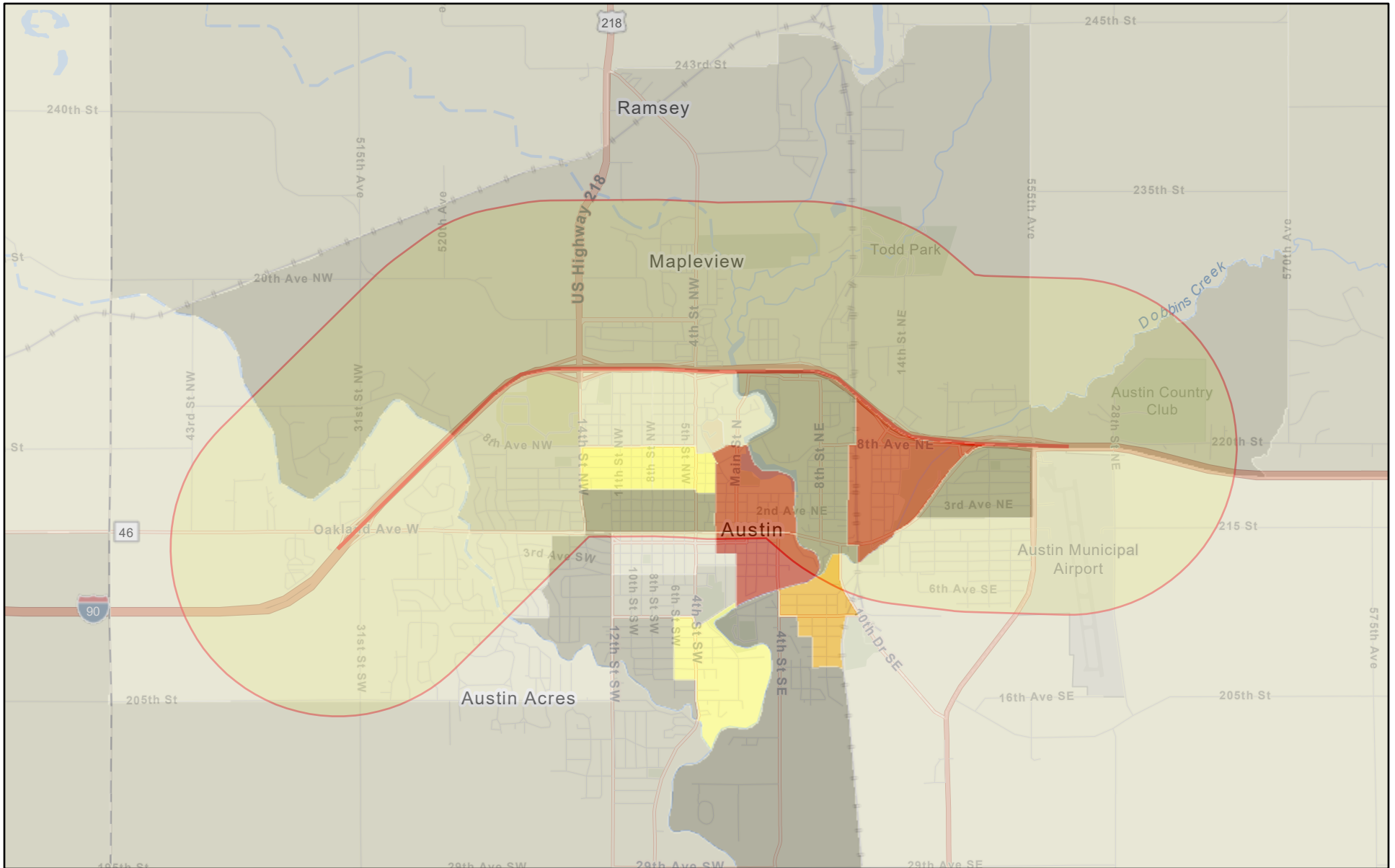
1:72,224



Esri, HERE, Garmin, SafeGraph, GeoTechnologies, Inc, METI/NASA, USGS, EPA, NPS, USDA



# Low Income



5/3/2022

EJSCREEN\_Indexes

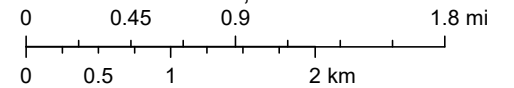
- Data not available
- Less than 50 percentile

- 50 -60 percentile
- 60 -70 percentile
- 70 -80 percentile

- 80 - 90 percentile
- 90 - 95 percentile

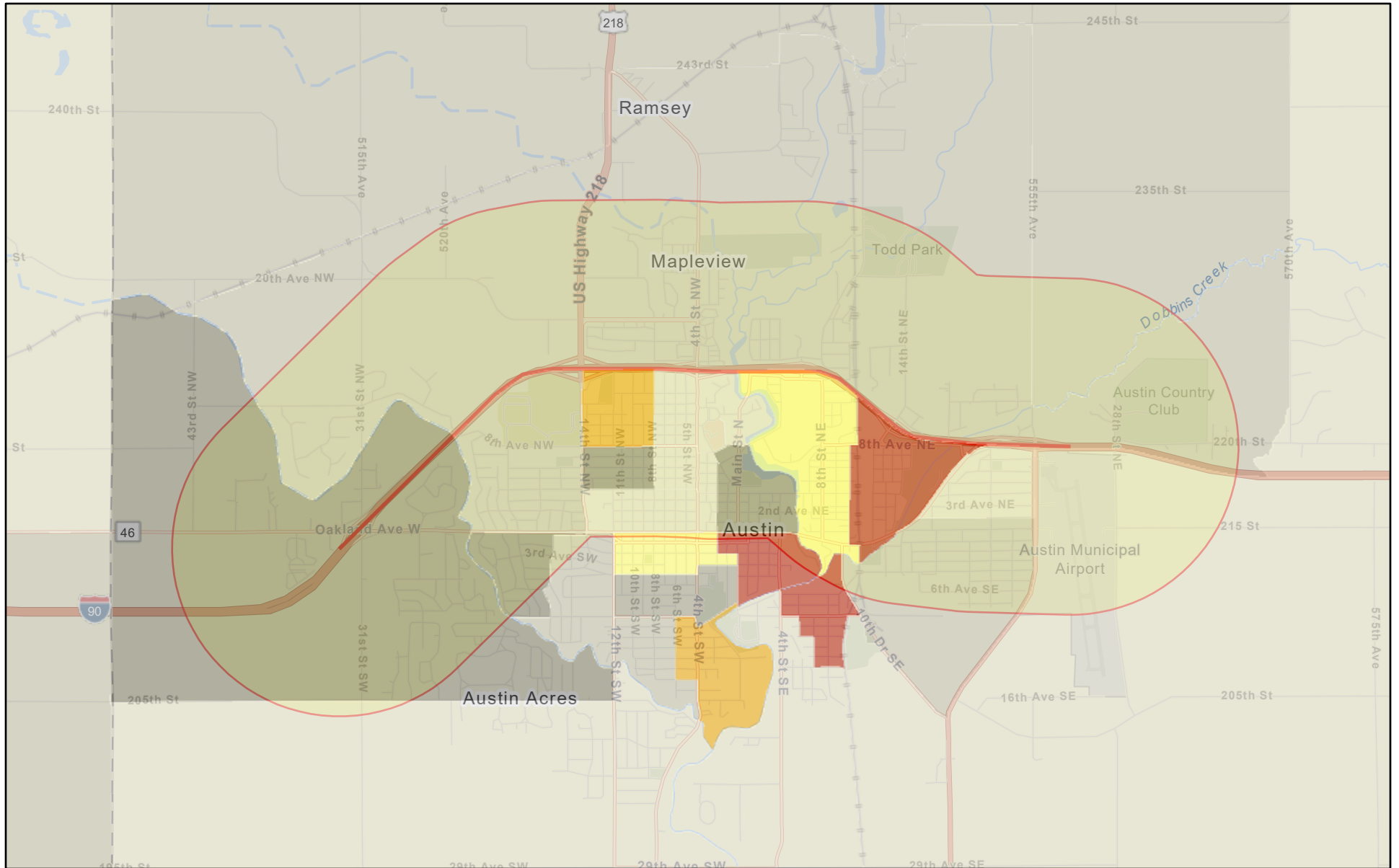
- Project Corridor

1:72,224



Esri, HERE, Garmin, SafeGraph, GeoTechnologies, Inc, METI/NASA, USGS, EPA, NPS, USDA

# Less Than High School Education



5/3/2022

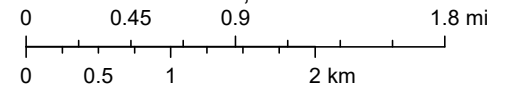
EJSCREEN\_Indexes

- Data not available
- Less than 50 percentile

- 50 -60 percentile
- 60 -70 percentile
- 70 -80 percentile
- 80 - 90 percentile
- 90 - 95 percentile
- 95 - 100 percentile

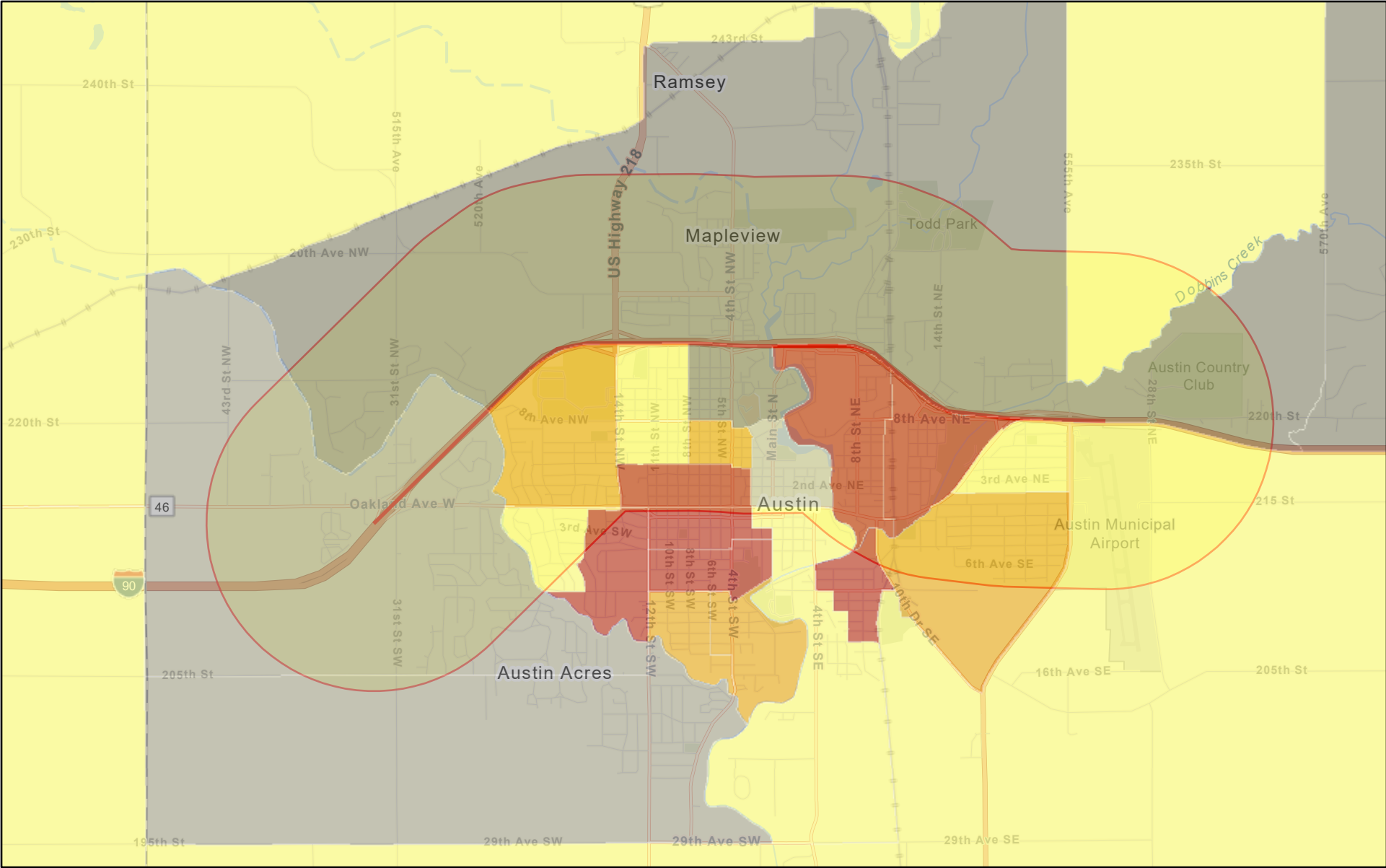
Project Corridor

1:72,224



Esri, HERE, Garmin, SafeGraph, GeoTechnologies, Inc, METI/NASA, USGS, EPA, NPS, USDA

# Lead Paint



5/3/2022

EJSCREEN\_Indexes

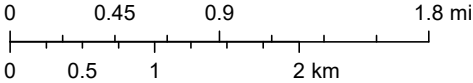
- Data not available
- Less than 50 percentile

- 50 -60 percentile
- 60 -70 percentile
- 70 -80 percentile

- 80 - 90 percentile
- 90 - 95 percentile

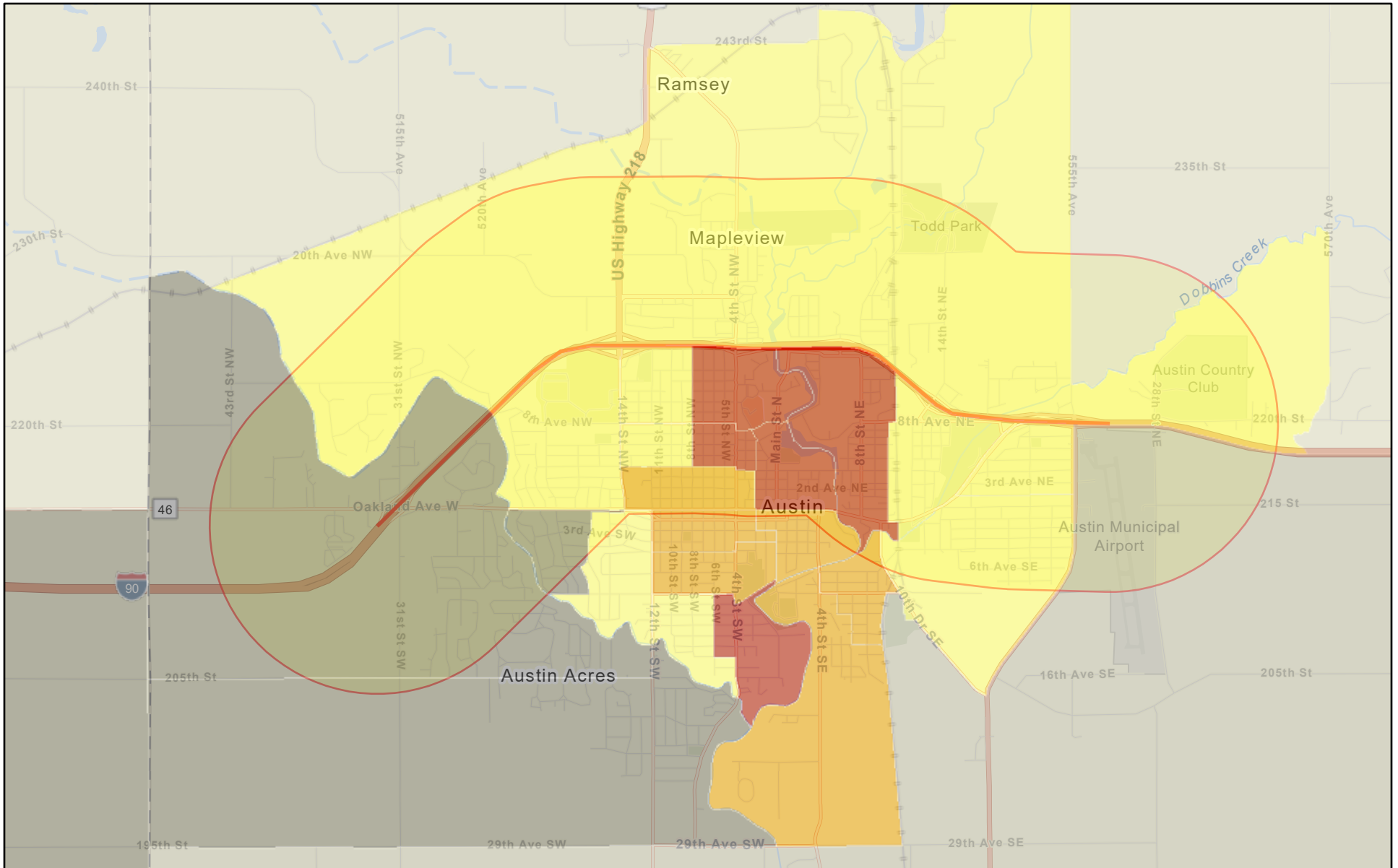
- 95 - 100 percentile
- Project Corridor

1:72,224



Esri, HERE, Garmin, SafeGraph, GeoTechnologies, Inc, METI/NASA, USGS, EPA, NPS, USDA

# RMP Facility Proximity



5/3/2022

EJSCREEN\_Indexes

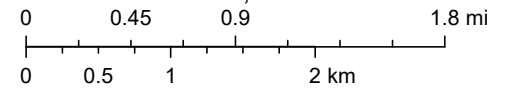
- Data not available
- Less than 50 percentile

- 50 -60 percentile
- 60 -70 percentile
- 70 -80 percentile

- 80 - 90 percentile
- 90 - 95 percentile
- 95 - 100 percentile

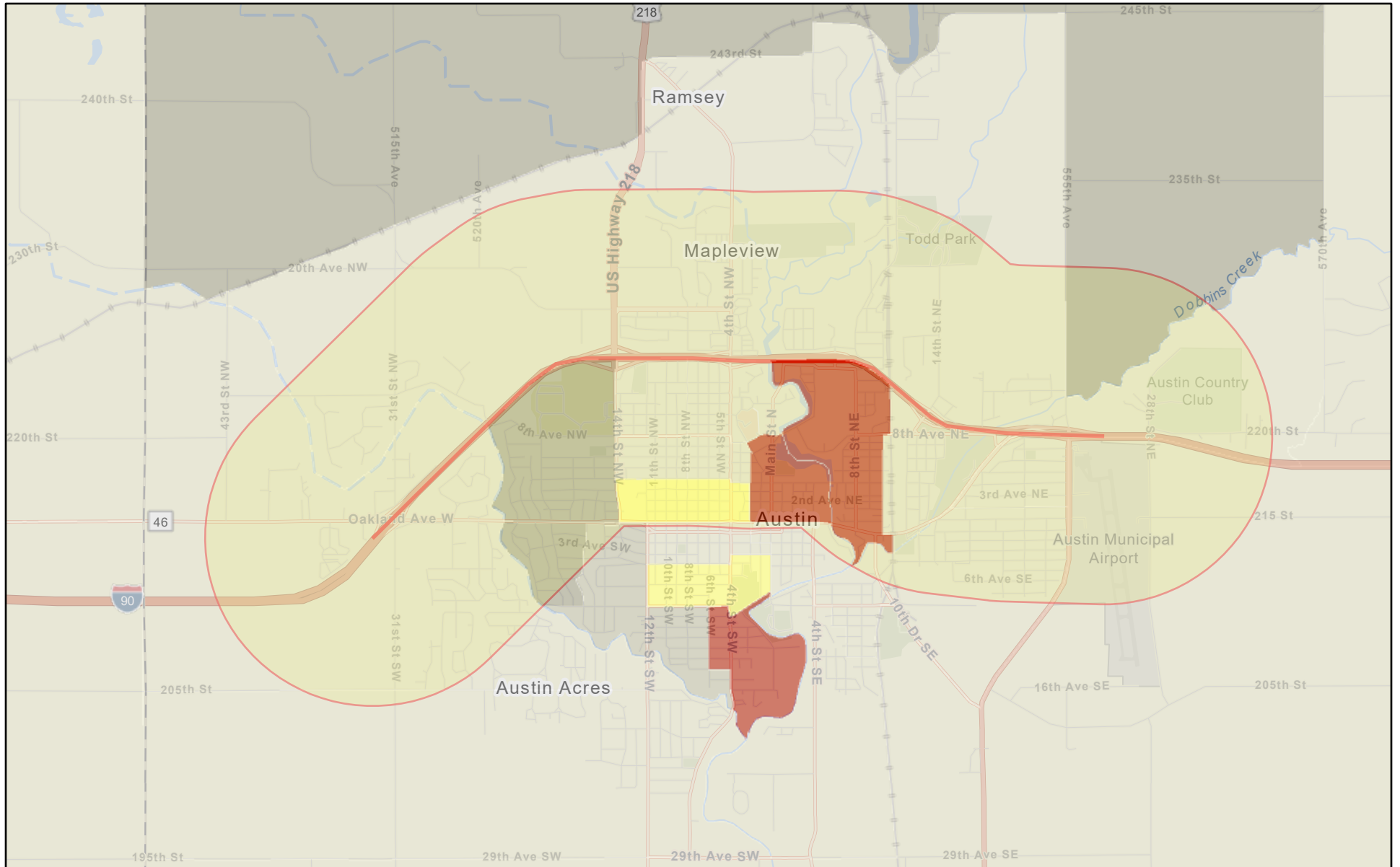
Project Corridor

1:72,224



Esri, HERE, Garmin, SafeGraph, GeoTechnologies, Inc, METI/NASA, USGS, EPA, NPS, USDA

# Unemployment Rate



5/3/2022

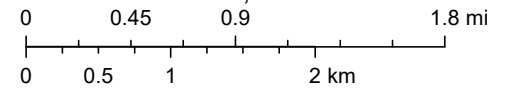
EJSCREEN\_Indexes

- Data not available
- Less than 50 percentile

- 50 -60 percentile
- 60 -70 percentile
- 70 -80 percentile
- 80 - 90 percentile
- 90 - 95 percentile
- 95 - 100 percentile

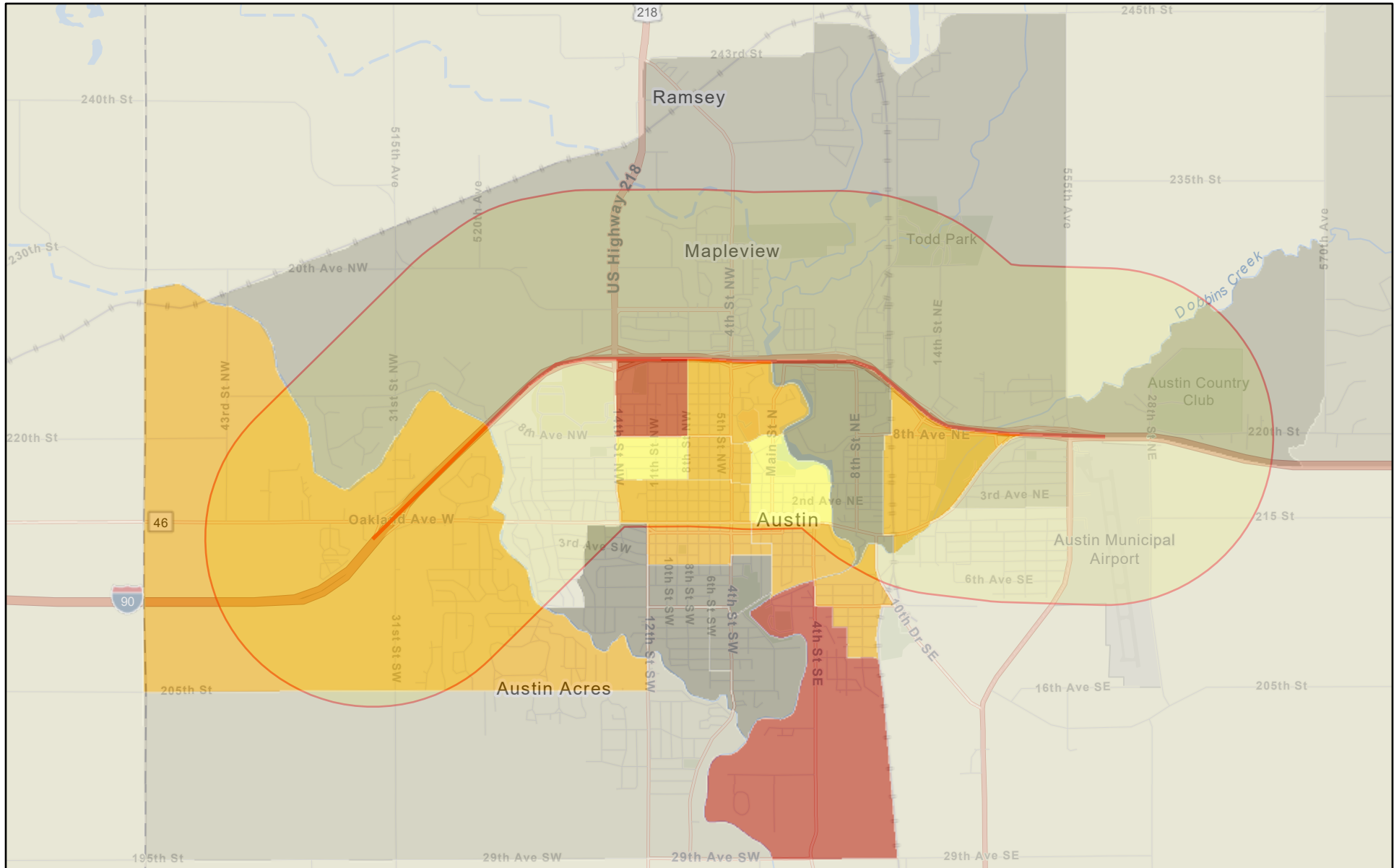
Project Corridor

1:72,224



Esri, HERE, Garmin, SafeGraph, GeoTechnologies, Inc, METI/NASA, USGS, EPA, NPS, USDA

# Linguistically Isolated



5/3/2022

EJSCREEN\_Indexes

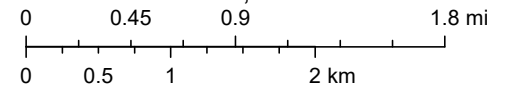
- Data not available
- Less than 50 percentile

- 50 -60 percentile
- 60 -70 percentile
- 70 -80 percentile

- 80 - 90 percentile
- 90 - 95 percentile
- 95 - 100 percentile

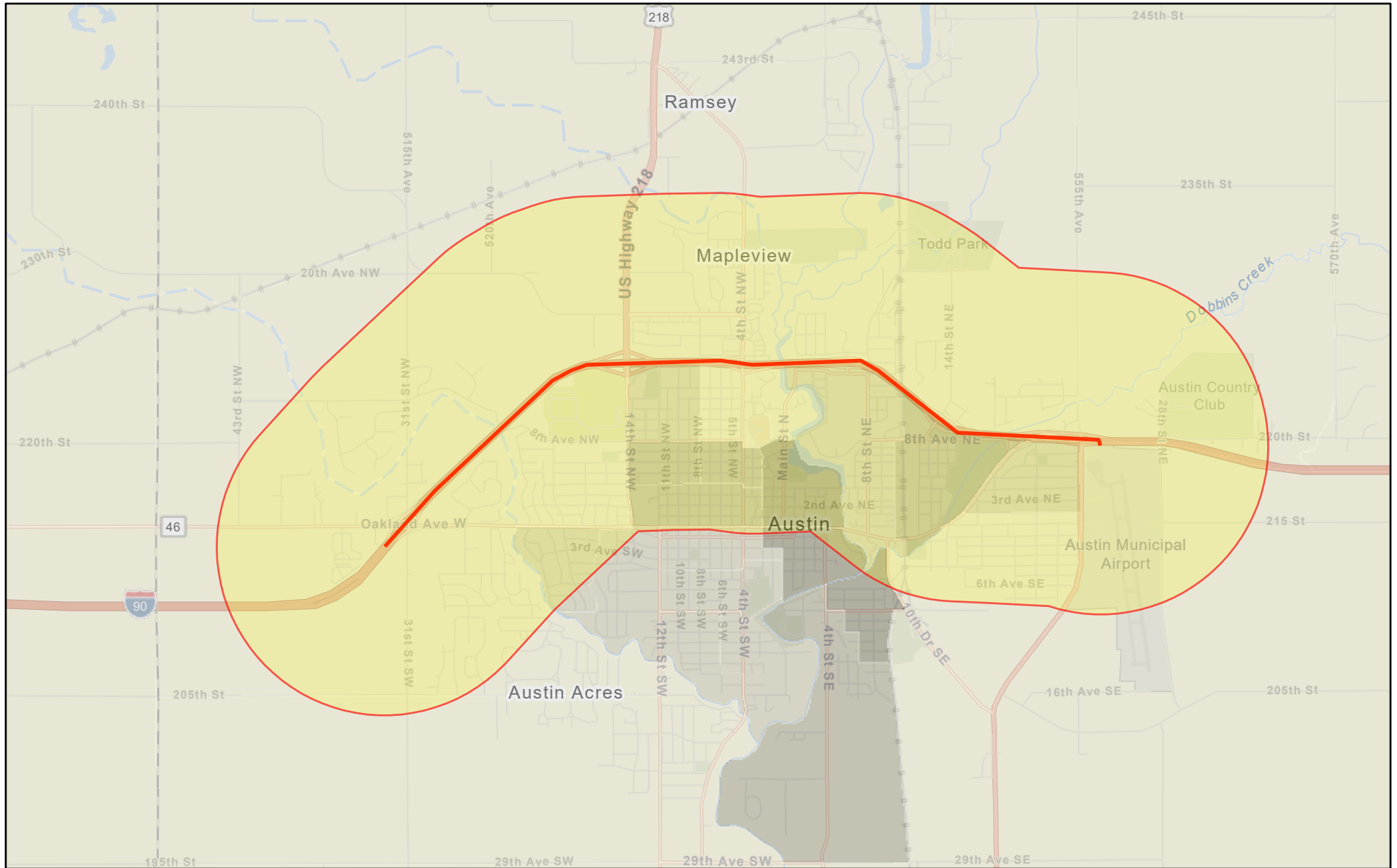
Project Corridor

1:72,224



Esri, HERE, Garmin, SafeGraph, GeoTechnologies, Inc, METI/NASA, USGS, EPA, NPS, USDA

# Air Toxics Cancer Risk



5/13/2022

Project 1

EJSCREEN\_Indexes

Data not available

Less than 50 percentile

50 -60 percentile

60 -70 percentile

70 -80 percentile

80 - 90 percentile

90 - 95 percentile

95 - 100 percentile

1:72,224

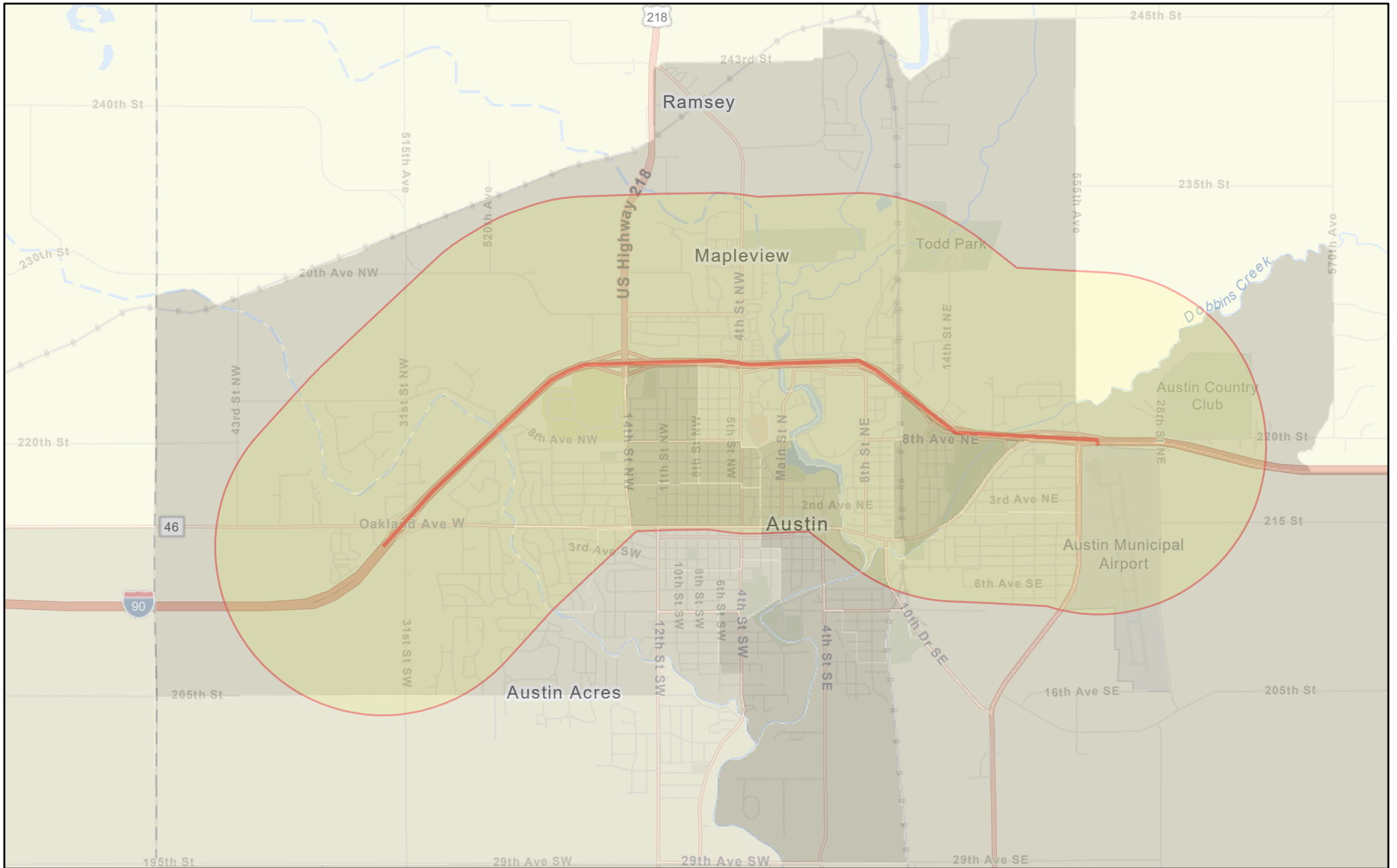
0 0.45 0.9 1.8 mi

0 0.5 1 2 km

Esri, HERE, Garmin, SafeGraph, GeoTechnologies, Inc, METI/NASA, USGS, EPA, NPS, USDA



# Wastewater Discharge



5/13/2022

EJSCREEN\_Indexes

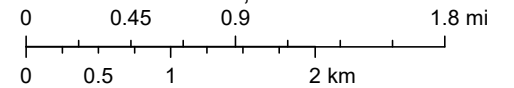
- Data not available
- Less than 50 percentile

- 50 -60 percentile
- 60 -70 percentile
- 70 -80 percentile

- 80 - 90 percentile
- 90 - 95 percentile
- 95 - 100 percentile

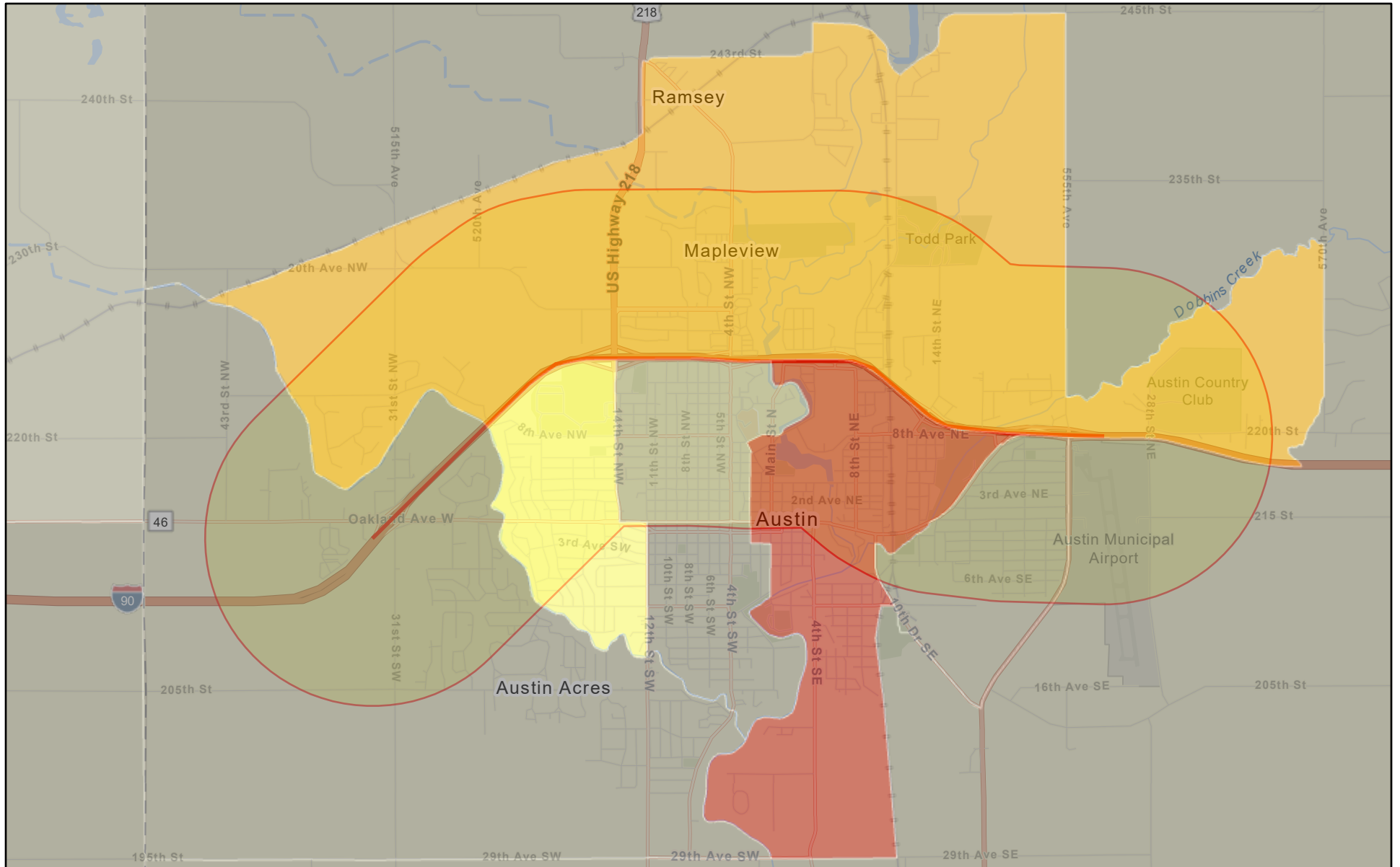
Project 1

1:72,224

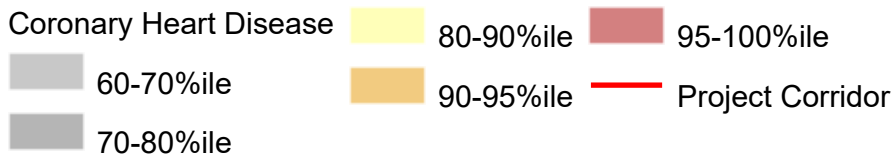


Esri, HERE, Garmin, SafeGraph, GeoTechnologies, Inc, METI/NASA, USGS, EPA, NPS, USDA

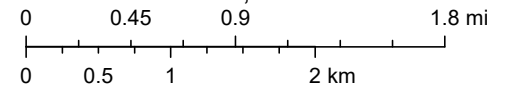
# Heart Disease



5/3/2022

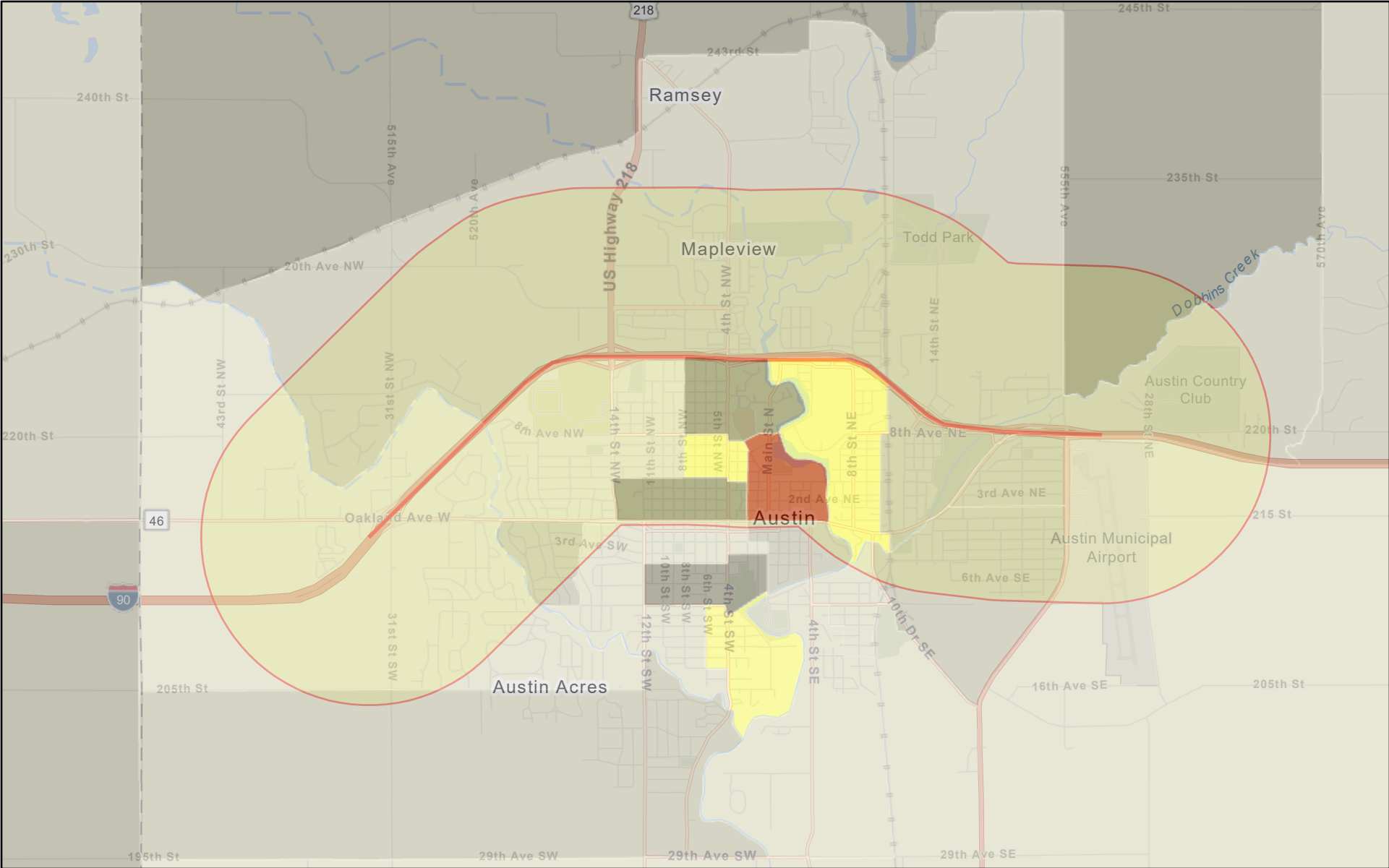


1:72,224



Esri, HERE, Garmin, SafeGraph, GeoTechnologies, Inc, METI/NASA, USGS, EPA, NPS, USDA

# Broadband Gaps

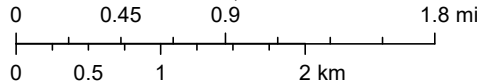


5/3/2022

ACS 2019 Broadband by Block Group

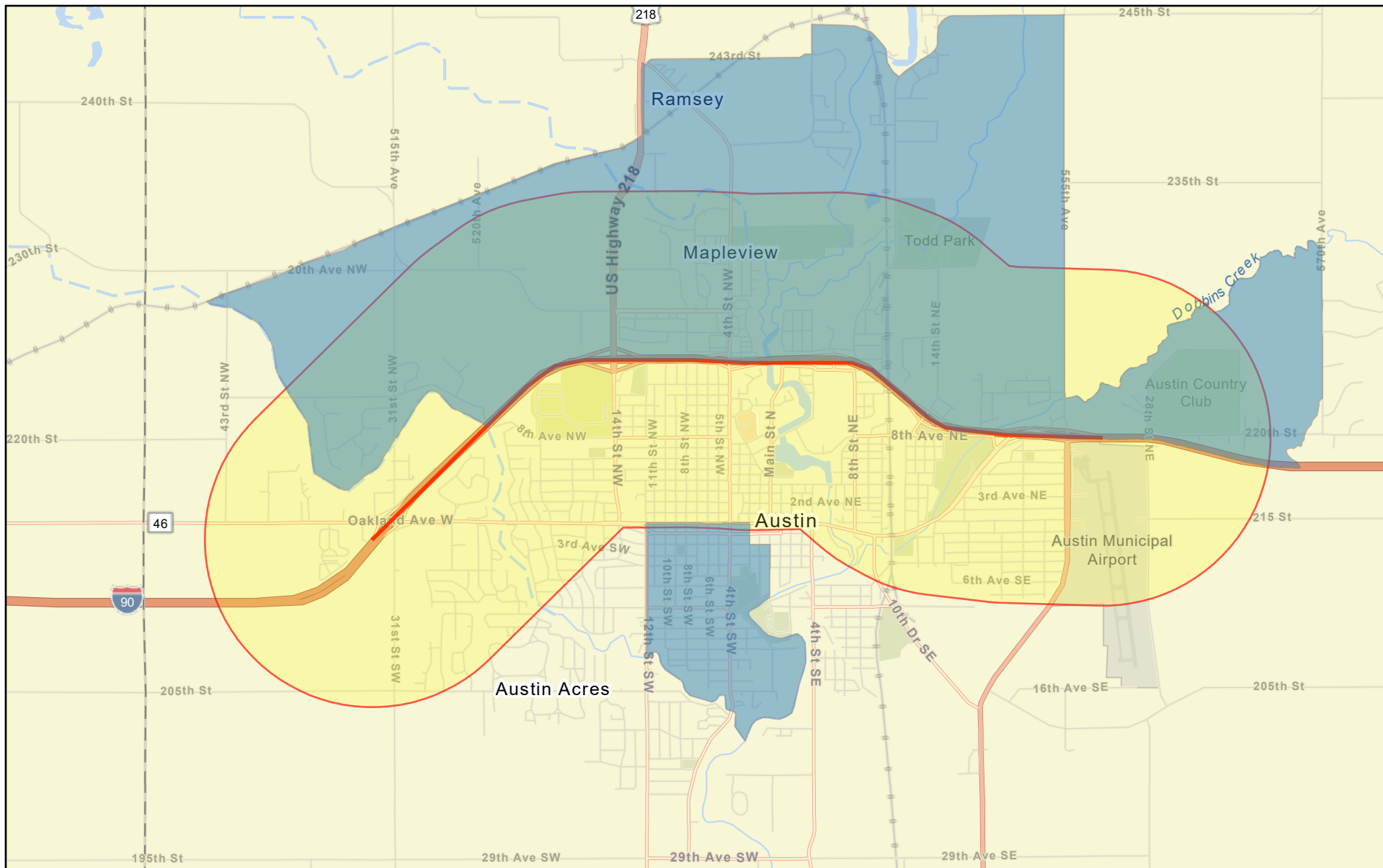
- Less than 50%ile
- 50-60%ile
- 60-70%ile
- 70-80%ile
- 80-90%ile
- 95-100%ile
- Project Corridor

1:72,224



Esri, HERE, Garmin, SafeGraph, GeoTechnologies, Inc, METI/NASA, USGS, EPA, NPS, USDA

# Food Desert

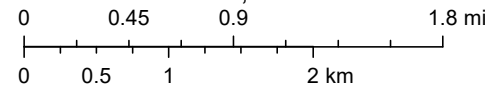


5/3/2022

 Low Income and Low Access at 1 and 10 miles

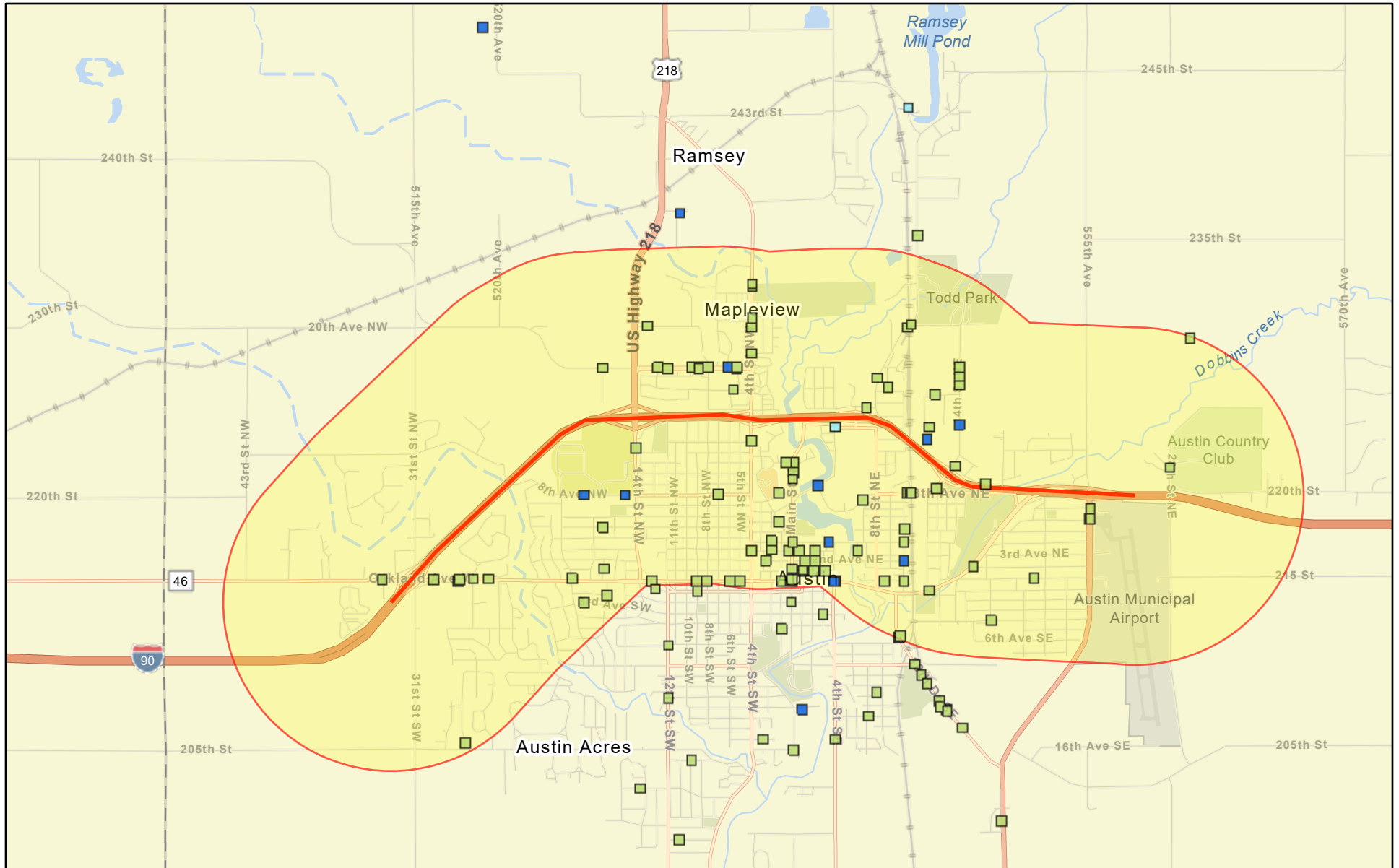
 Project Corridor

1:72,224



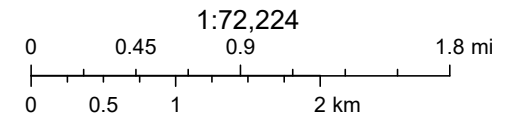
Esri, HERE, Garmin, SafeGraph, GeoTechnologies, Inc, METI/NASA, USGS, EPA, NPS, USDA

# EPA Regulated Facilities



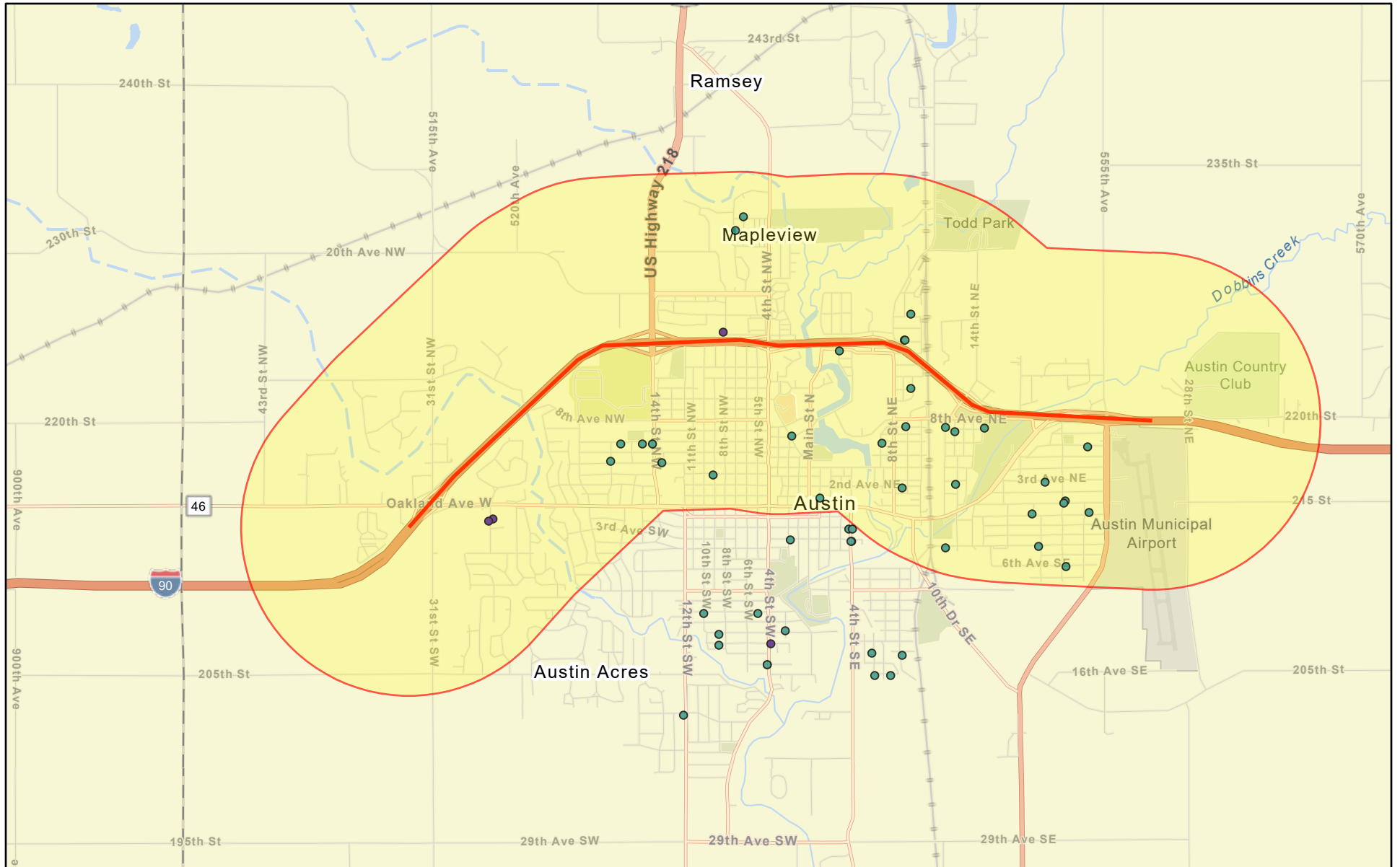
5/11/2022

-  Toxic releases
-  Hazardous waste
-  Air pollution
-  Project 1



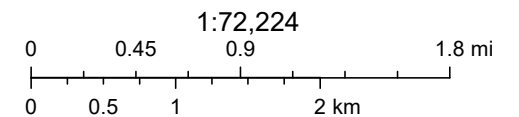
EPA OMS, Esri, HERE, Garmin, SafeGraph, GeoTechnologies, Inc, METI/  
NASA, USGS, EPA, NPS, USDA

# Public and Subsidized Housing



5/11/2022

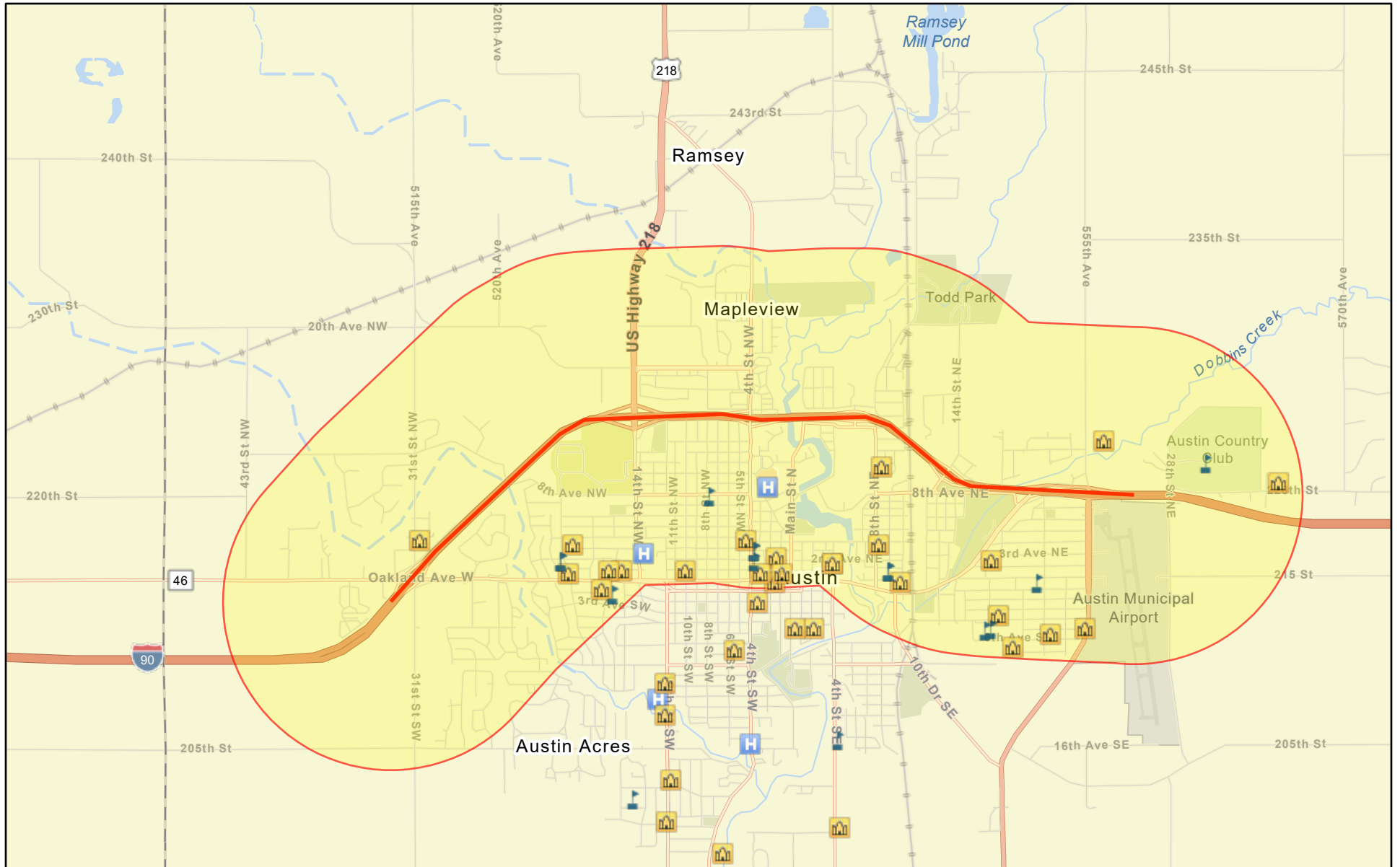
- Public Housing
  - Subsidized Housing
- Project 1






Esri, HERE, Garmin, SafeGraph, GeoTechnologies, Inc, METI/NASA, USGS, EPA, NPS, USDA

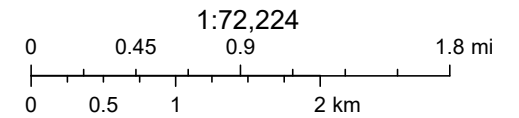


# Schools, Hospitals, Places of Worship



5/11/2022

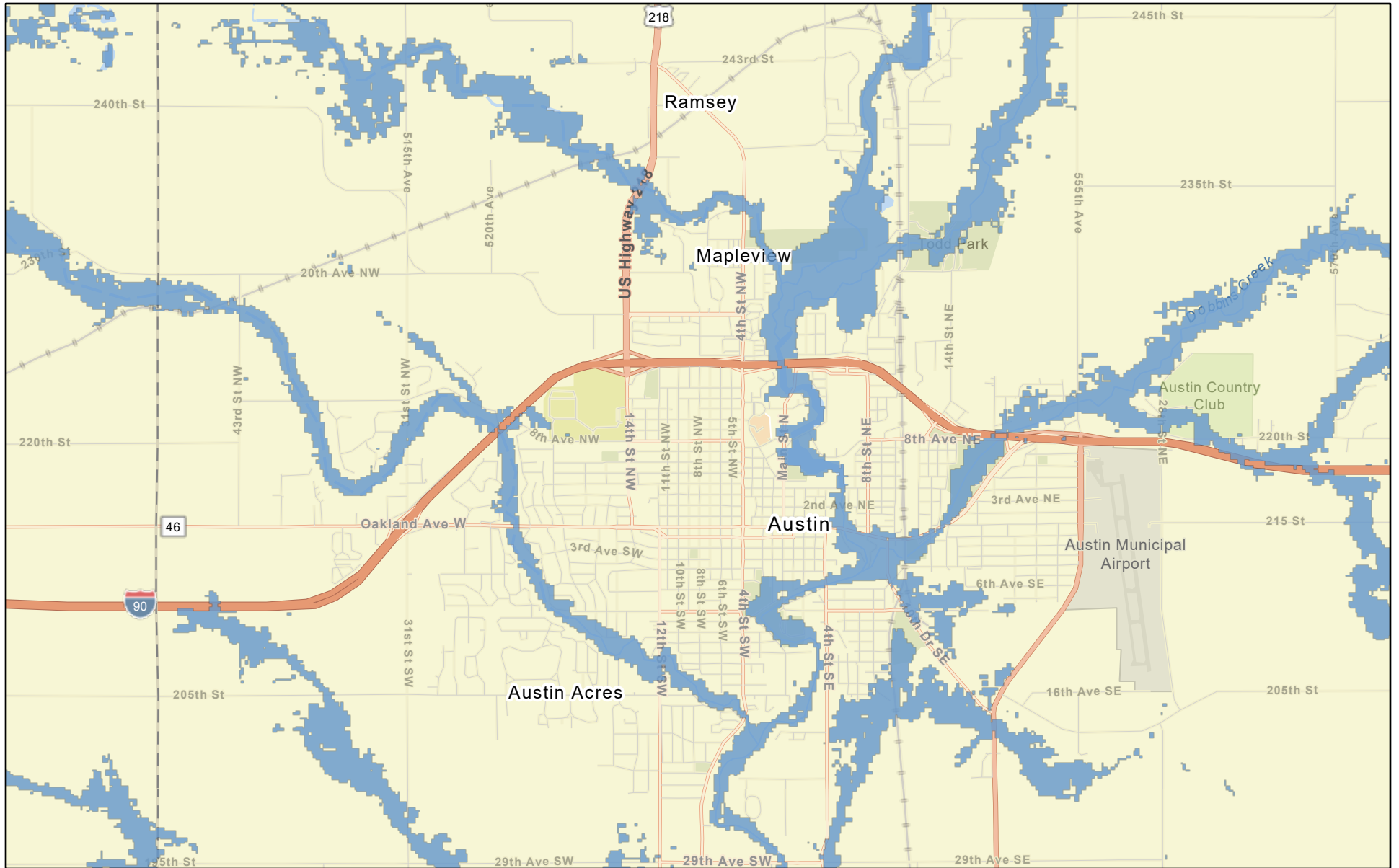
-  Schools
-  Places of Worship
-  Hospitals
-  Project 1



Esri, HERE, Garmin, SafeGraph, GeoTechnologies, Inc, METI/NASA, USGS, EPA, NPS, USDA



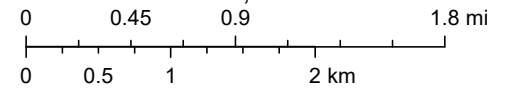
# Floodplain



5/13/2022

 Area in Estimated Floodplain

1:72,224



Esri, HERE, Garmin, SafeGraph, GeoTechnologies, Inc, METI/NASA, USGS, EPA, NPS, USDA