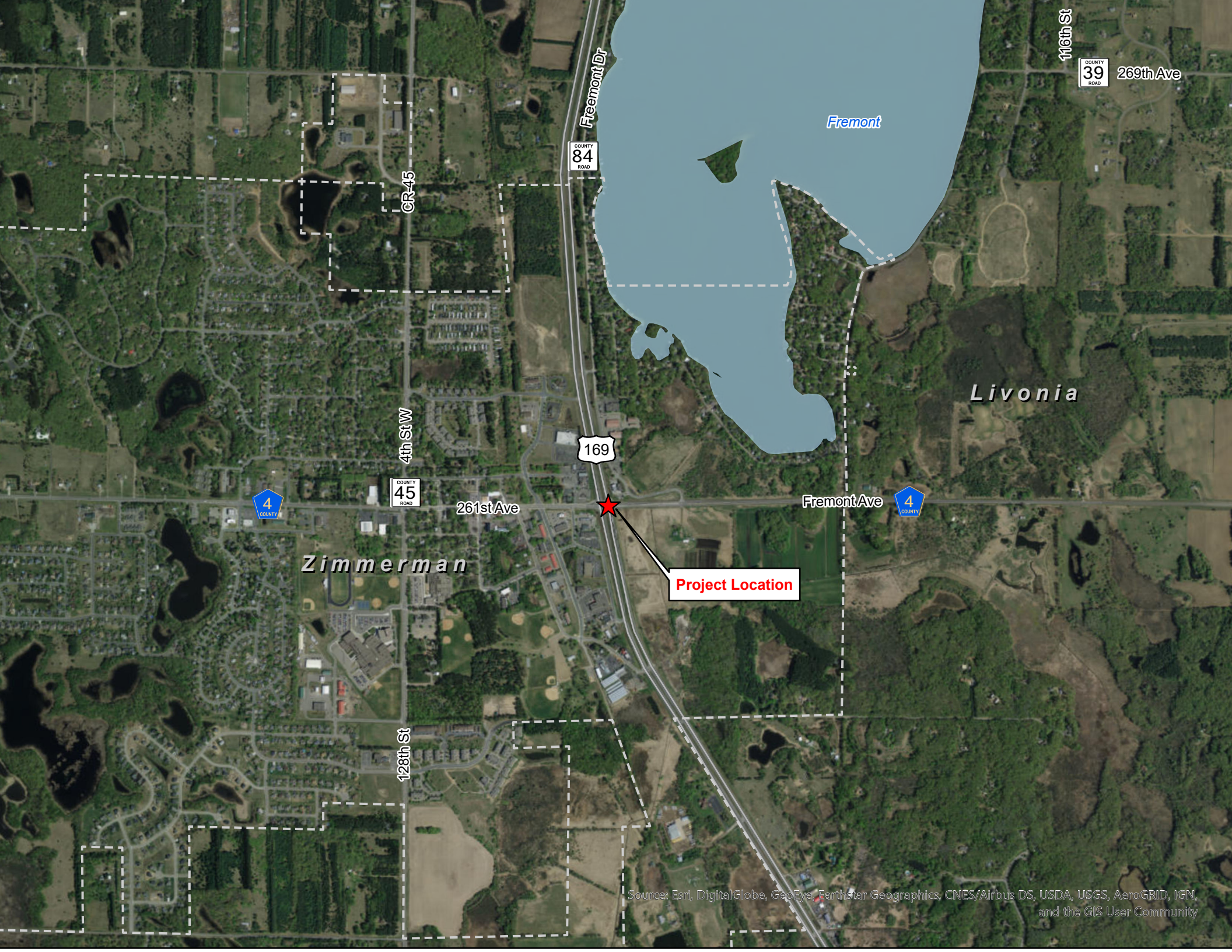


- ★ Project Location
- US 169
- National Highway Freight Network
- Sherburne County
- Twin Cities Metropolitan Area

Sources: Esri, HERE, Garmin



Fremont Dr

COUNTY 84 ROAD

116th St

COUNTY 39 ROAD

269th Ave

Fremont

CR-45

4th St W

COUNTY 45 ROAD

261st Ave

169

Livonia

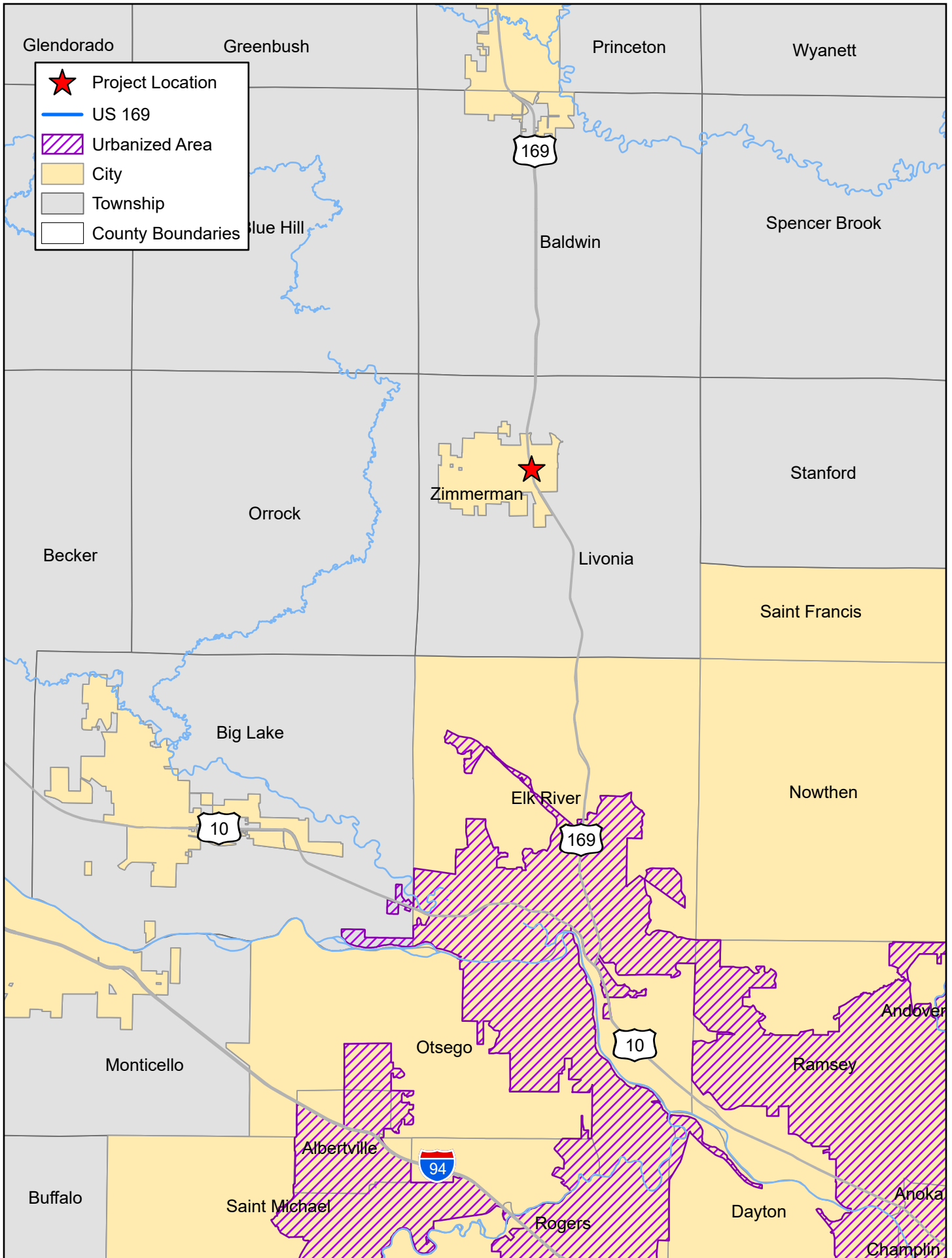
Fremont Ave

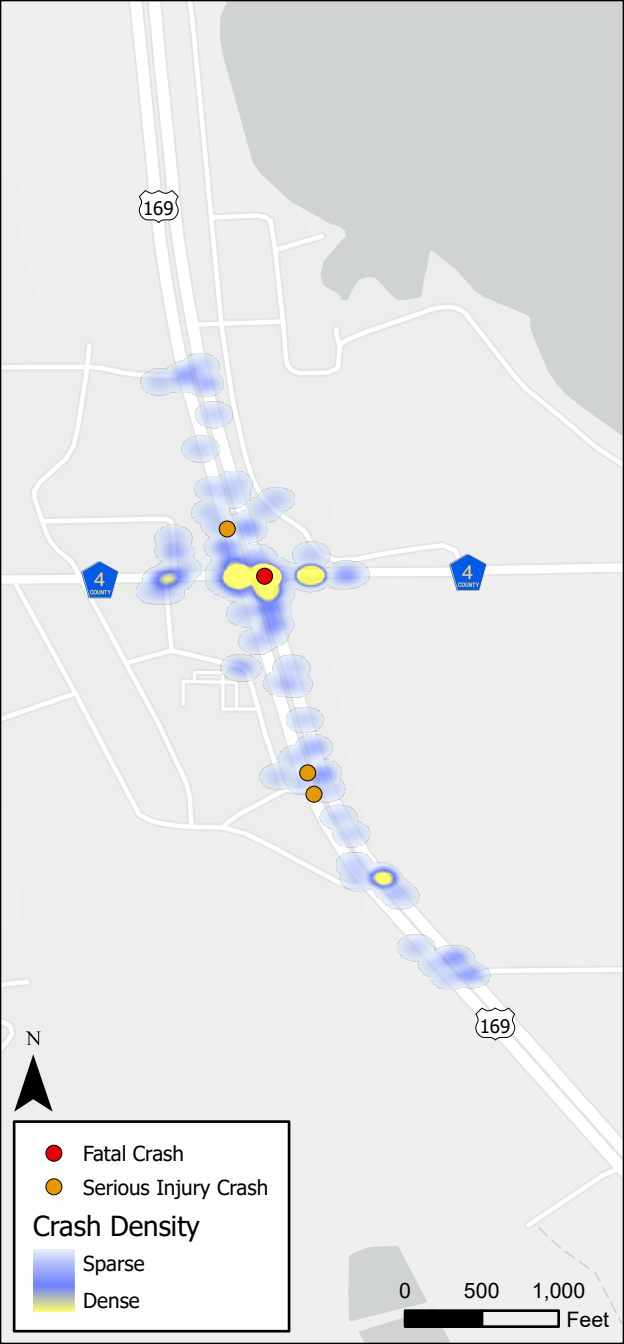
4 COUNTY

4 COUNTY

Zimmerman

Project Location





169

4 COUNTY

4 COUNTY

169

N



Fatal Crash



Serious Injury Crash

Crash Density



Sparse

Dense

0

500

1,000

Feet

Fix It, 4/169

Highway 169 is a major route for local and statewide travel and accommodates commuter, tourist and freight traffic. In Zimmerman, a traffic signal at County Road 4 and unrestricted highway access cause frequent traffic congestion, causing loss of freight revenue, user frustration and an increase in the number of crashes.



Over the next 20 years, traffic volume is expected to increase by 40%, which will amplify existing issues.

Traffic counts completed in 2018 show 27,000 cars per day (AADT) use Highway 169 south of the County Road 4 intersection and 21,200 north of the intersection. The City of Zimmerman and Sherburne County need to be prepared to plan and construct a solution that addresses the mobility and safety of its residents, businesses and visitors.

\$2 million is requested to re-evaluate MnDOT interchange concepts from 10 years ago, update environmental documents, and develop final plans and specifications.

Existing Corridor Issues



TRAFFIC DELAYS: Mile-long backups are common during peak travel times. Drivers often wait through multiple signal cycles before making it through the intersection.



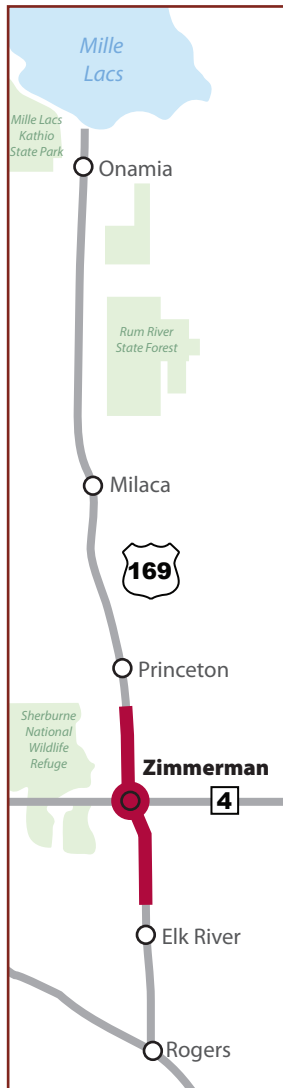
FREQUENT CRASHES: Crashes (1 fatality) reported in the last 5 years equaled \$15.9 million in damages, the 2nd highest in the state for similar intersections. Both the crash rate (1.72) and crash severity (2.41) are almost 4 times above state averages for similar intersections, 0.45 and 0.63 respectively.



OBSTACLES TO ECONOMIC DEVELOPMENT: The uncertain future of the intersection and poor access greatly hinder the sale of existing commercial properties. On the west side of Hwy 169, a lack of highway access is a major barrier to the development of large vacant properties.



HIGHWAY HURDLE: All the traffic freed up by the *Hwy 169 Redefine* project in Elk River may have to stop at the traffic signal in Zimmerman.



Benefits of a New Interchange



SIGNAL-FREE TRAFFIC CORRIDOR:

Converting the intersection to an interchange would **eliminate the last remaining traffic signal** on the 75-mile stretch of Hwy 169 between Rogers and Lake Mille Lacs.

MEET FUTURE TRAFFIC NEEDS:

Constructing a highway interchange now will alleviate current issues and will accommodate the expected future **increase in traffic volumes.**



SUPPORTED ECONOMIC GROWTH:

An efficient road network would support Sherburne County's **economic vitality** for existing commerce and planned commercial and industrial growth. Controlled and safe access on and off Hwy 169 would support future development of 140 acres adjacent to the highway.

PEDESTRIAN & BICYCLE CONNECTIVITY:

Conversion to an interchange would create opportunity to **connect existing and proposed trails**, greatly improving access to parks and other scenic and natural amenities throughout the county.

