

Equity Analysis for Public Engagement

An initial **Equity Analysis** was conducted by the project team to: identify vulnerable and/or transit dependent populations within the project area; to map residences and destinations for low-income populations, communities of color, immigrant populations, children, the elderly, and people with disabilities; and to identify barriers to engagement and ways to overcome these barriers.

The following provides an overview of populations generally underrepresented in the public engagement process, barriers to their engagement, ways to overcome these barriers and services that can assist in reaching underrepresented populations. The Project's Engagement Advisory Committee (EAC) made up of local agency communications and engagement representatives, provided assistance in identifying social service agencies and community resources.

Underrepresented Populations

- Seniors and Youth
- Transit Users
- Low-income populations
- Immigrant Populations
- Non-English speaking populations

Barriers to Engagement

- Language Barriers
- Access to Transportation
- Time and Schedule (Ex: 3rd shift)
- Access to Childcare
- Motivation to Engage (Why should I be interested?)
- Mistrust or Fear of Government
- Unfamiliar with Public Process

Ways to overcome barriers

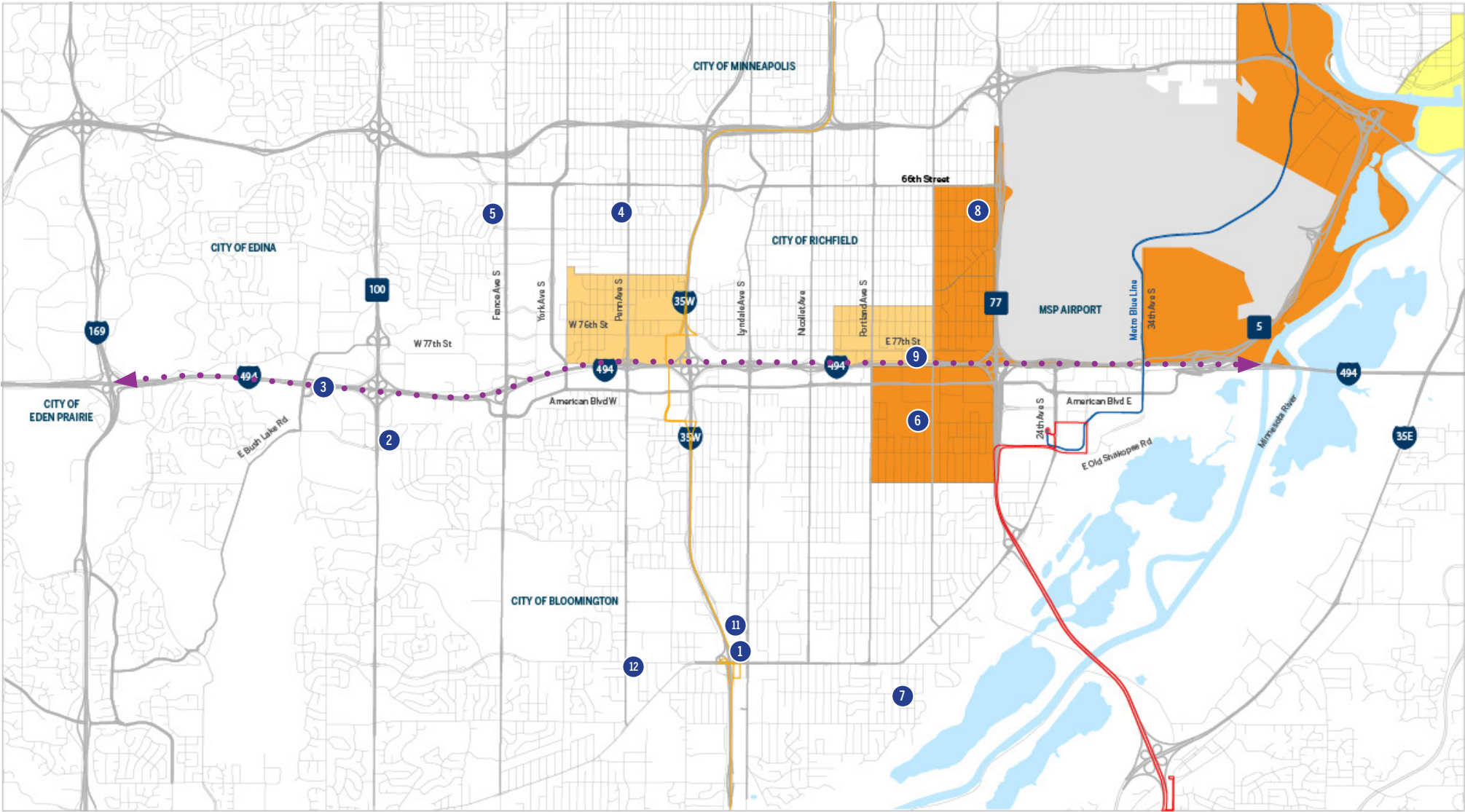
- Translate project materials into multiple languages
- Provide ADA accessible materials on the website
- Hold engagement events at locations that are on transit routes
- Hold engagement events at locations where stakeholders are already gathered (Open Streets, Farmer's Markets, Churches, Etc.)
- Use visual aids and easy-to-understand graphics when possible
- Consider providing childcare and light refreshments at events
- Provide project materials at social services events and offices
- Use cable TV slides on government access channels and monitors
- Leverage City staff in Human Services, Public Health staff
- Make interpreters (sign language and ESL) available upon request or available at events in linguistically isolated communities
- Use targeted social media advertising to reach underrepresented populations

Social Services

- VEAP
- Faith Based Organizations
- School Districts
- Cornerstone Advocacy Services
- Hennepin County Service Center
- Minnesota Workforce Center
- Community Centers – Creekside Community Center
- Food Shelves (Good in the Hood)

The equity analysis map on the following page provides an overview of socio-economics of the corridor, the location for potential outreach partners and linguistically isolated high-density housing clusters.

Equity Analysis Overview Map for Public Engagement



Areas of Concentrated Poverty

Areas of Concentrated Poverty where 50% or more of the residents are people of color

Areas where 50% or more of the residents are people of color

Metro Transit

Red Line

Blue Line

Orange Line

Project Corridor

N

- 1

Hennepin County Human Services

2

Pacer Center

3

Restart Inc.
- 4

Chinese Social Services

5

REM Minnesota Inc

6

Cornerstone Advocacy Service
- 7

Chicago Place Lutheran Social Services

8

Arrive Ministries

9

Apartments in Linguistically Isolated Block

(Between E 77th St and I-494, from Portland Ave to 12th Ave SE)
- 10

Adaptive Recreation & Learning Exchange Partnership

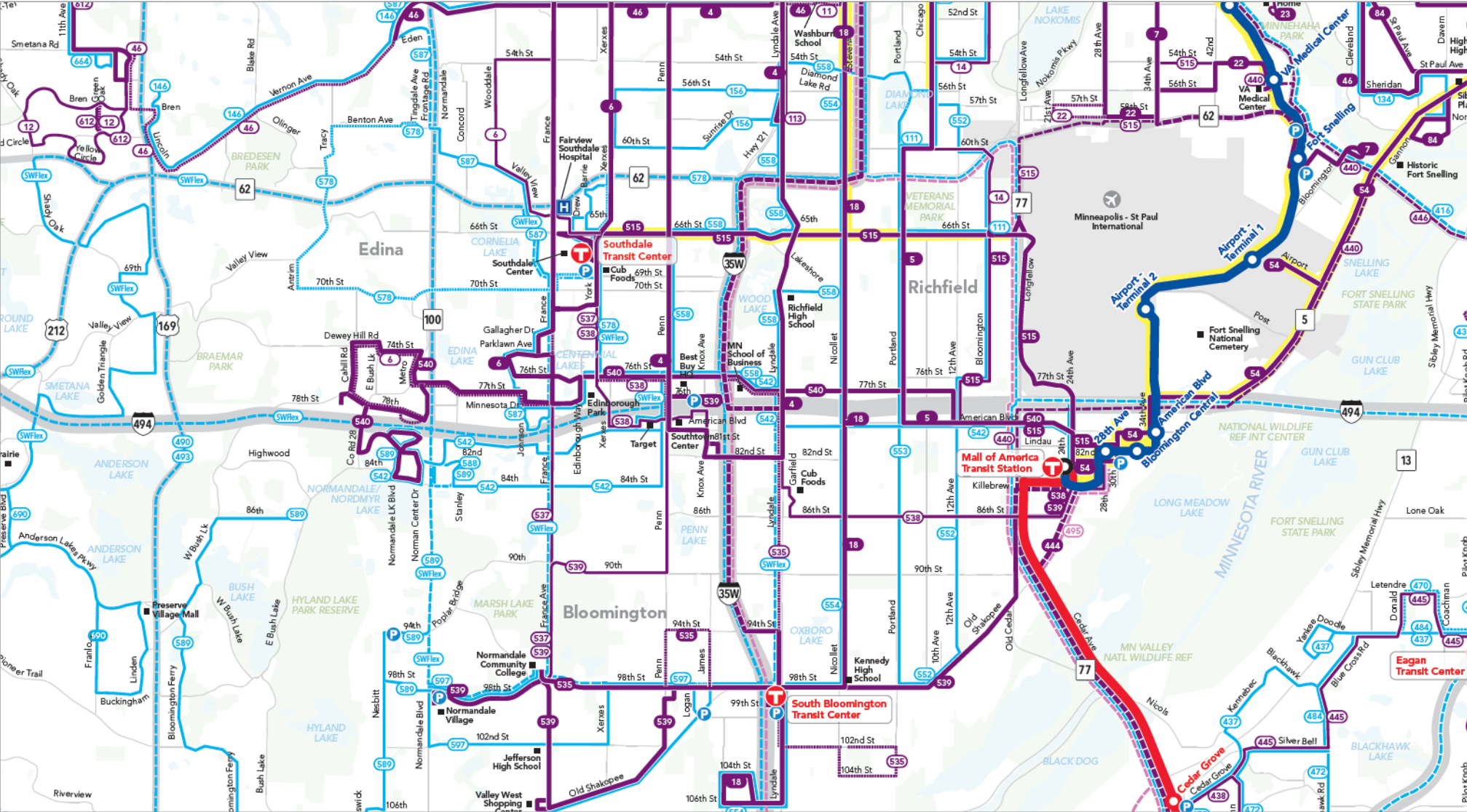
11

VEAP

12

Creekside Community Center

Existing Transit System Map



Source: Metro Transit System Map

I-494: AIRPORT TO HWY 169

Environmental Justice Summary

The following pages include an analysis of demographic data that were used to better understand the characteristics of the study corridor and where targeted efforts to reach under-represented populations would be the most effective. The maps were created using EJSCREEN, an Environmental Justice Screening and Mapping Tool created by the Environmental Protection Agency (EPA).

This information is meant to guide the early stages of public engagement to provide a more equitable outreach process. It is not meant to replace the Environmental Justice Analysis which will be a more in-depth look as part of the EA process.

Low Income and Minority Populations

- The census block containing the MSP Airport has a large land area and no resident population, which can skew results for some data sets. (Ignore all results for MSP Airport for the purposes of this analysis.)
- Some census blocks adjacent to the corridor are in the 80th-90th percentile for minority populations compared to the national average.
- Some census blocks adjacent to the corridor are in the 90th-95th percentile for low income compared to the national average.

Linguistic Isolation

- Some census blocks adjacent to the corridor have residents who do not speak English.
- Provide Spanish translation and interpreter services.
- Continue to assess need for translating into additional languages.

Subsidized Housing and Public Places

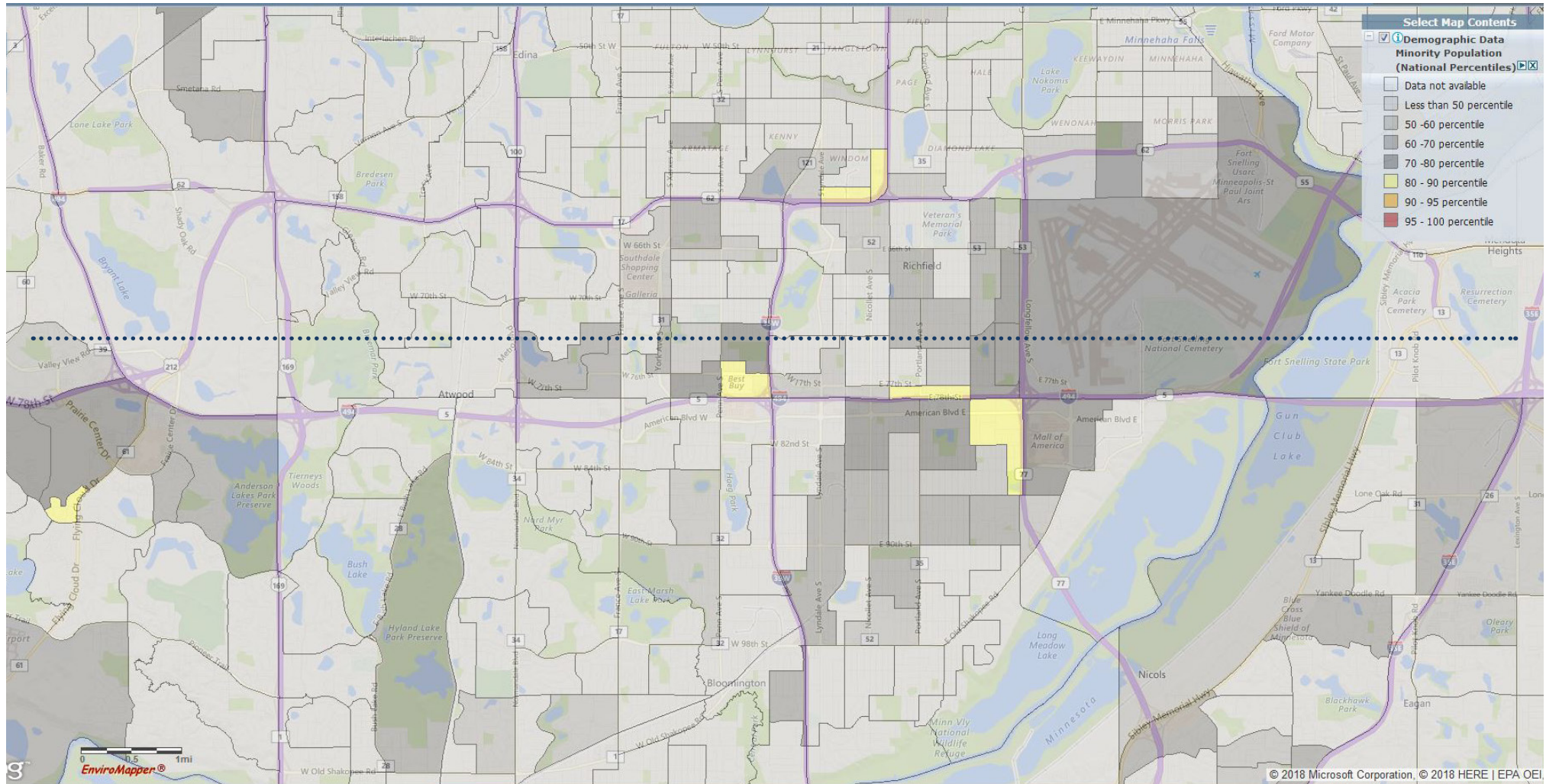
- Consider providing targeted outreach to subsidized housing units.
- Consider providing targeted outreach to schools in the project area.
- Consider partnering with area churches for engagement opportunities.

For more information and to sign up for email updates, visit the project website:

www.dot.state.mn.us/metro/projects/i494-airport-hwy169/

Demographic Data Minority Populations

(National Percentiles)

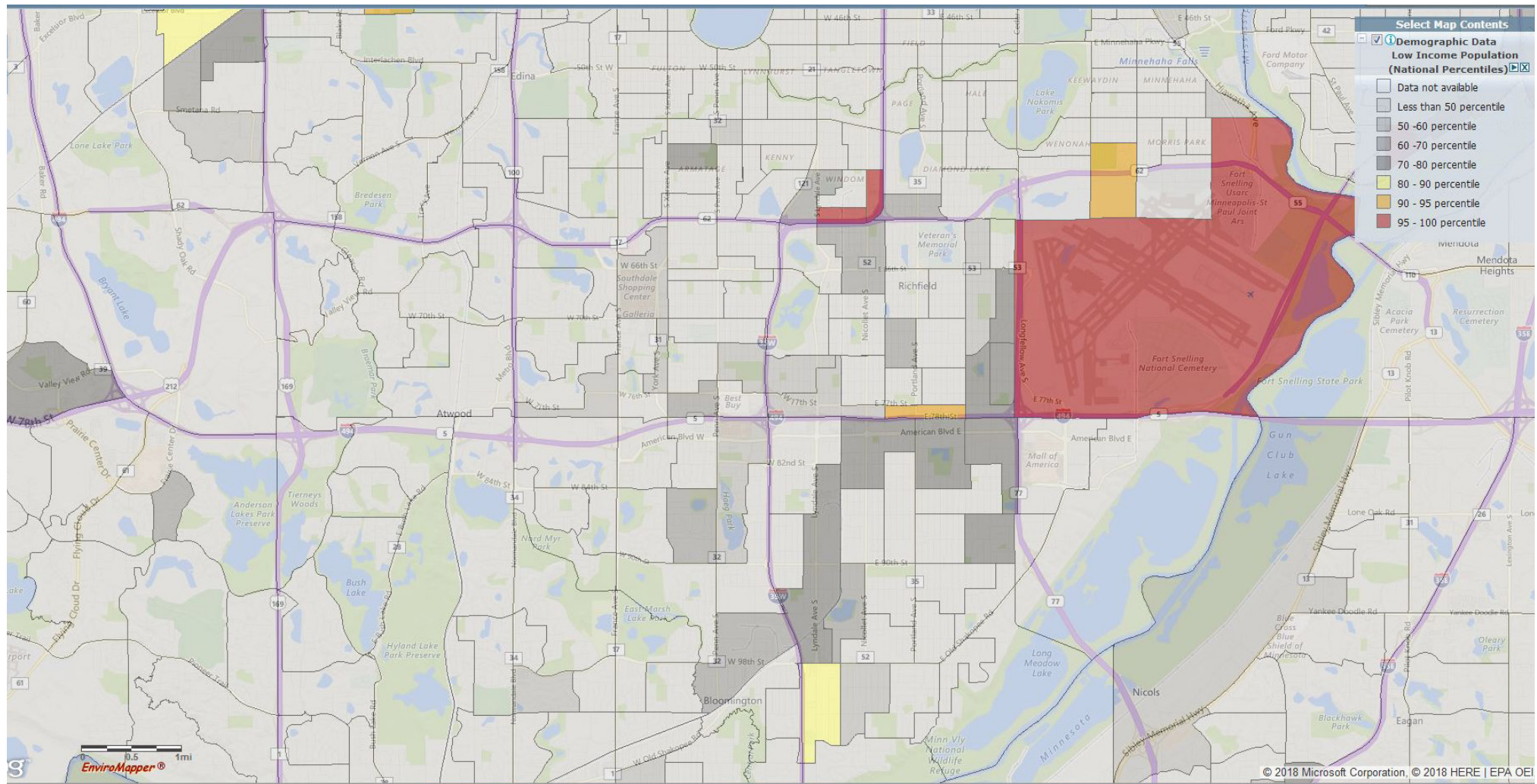


A minority person is a citizen of the United States who is African American, Hispanic, Native American, Asian Pacific, or Asian Indian. African American is a US citizen who has origins in any of the African racial groups of Africa, and is regarded as such by the community of which the person claims to be a part.

Source of all maps is the EPA Environmental Justice Screening and Mapping Tool (Version 2018).

Demographic Data Low Income Populations

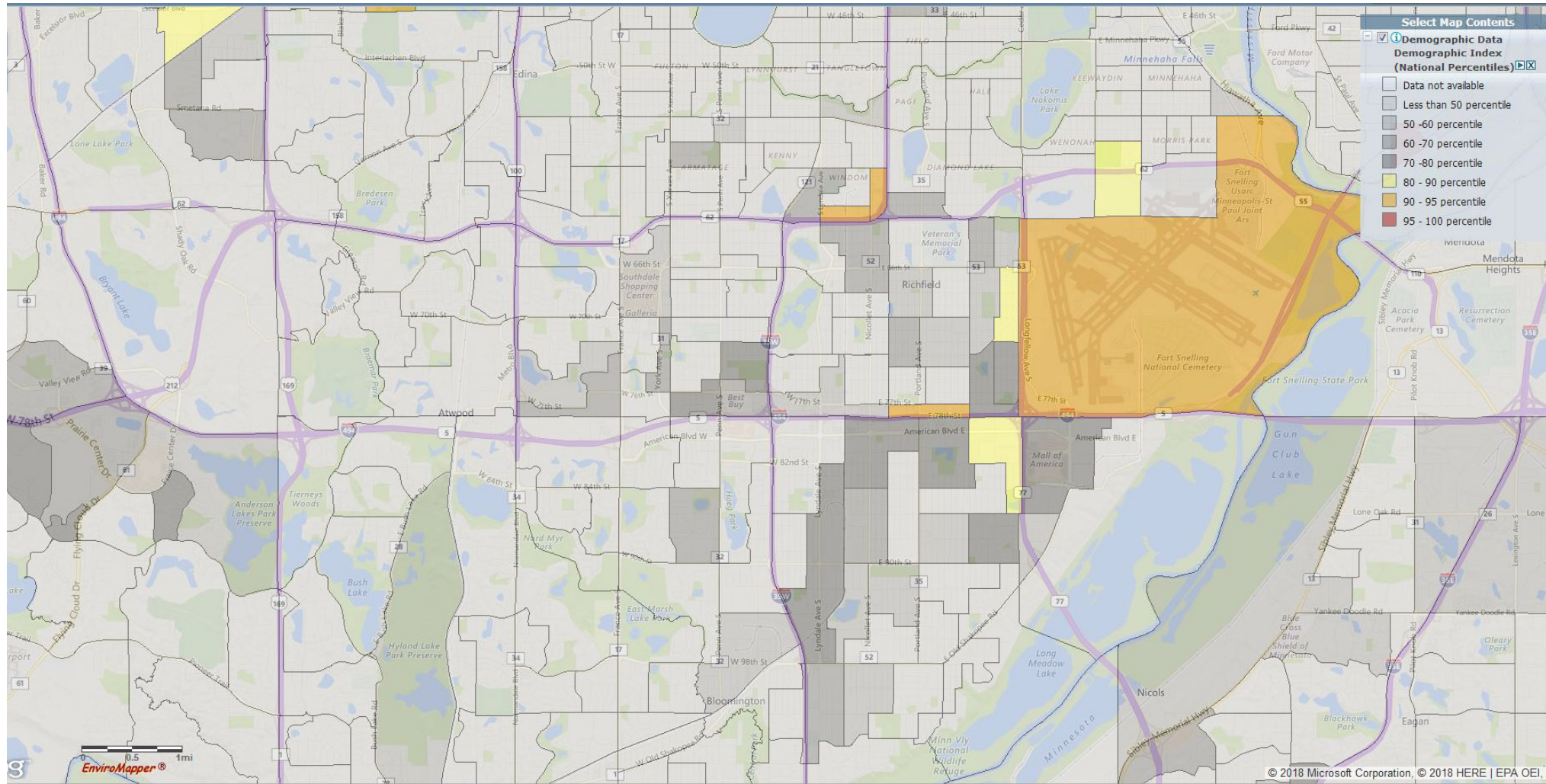
(National Percentiles)



Low-income is considered 200 percent of the federal poverty level, and poor is defined as 100 percent of the poverty level. For 2018, a family of four making less than \$25,100 is considered to be at the federal poverty level, and \$50,200 is considered low income.

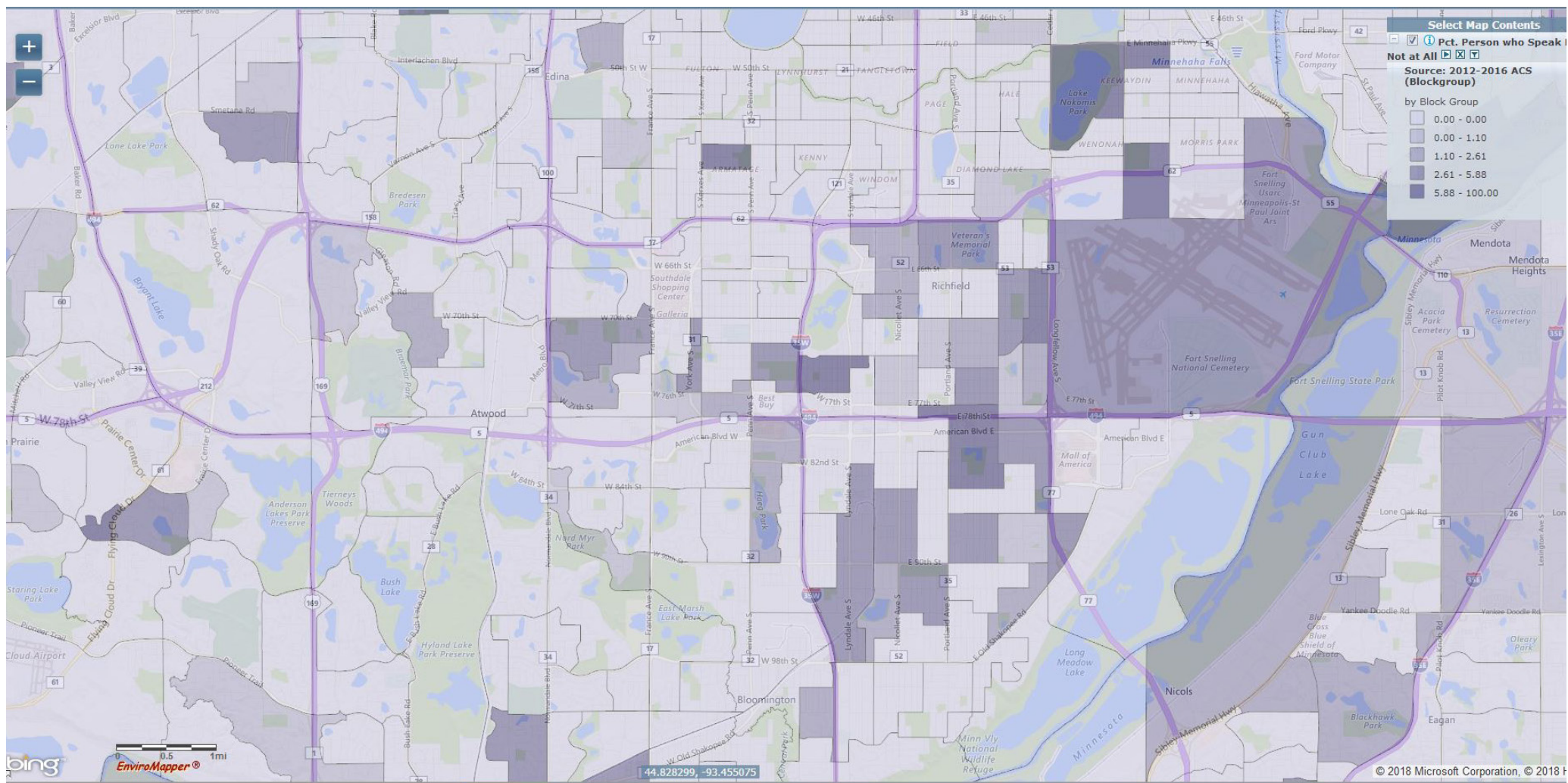
Source of all maps is the EPA Environmental Justice Screening and Mapping Tool (Version 2018).

Demographic Index

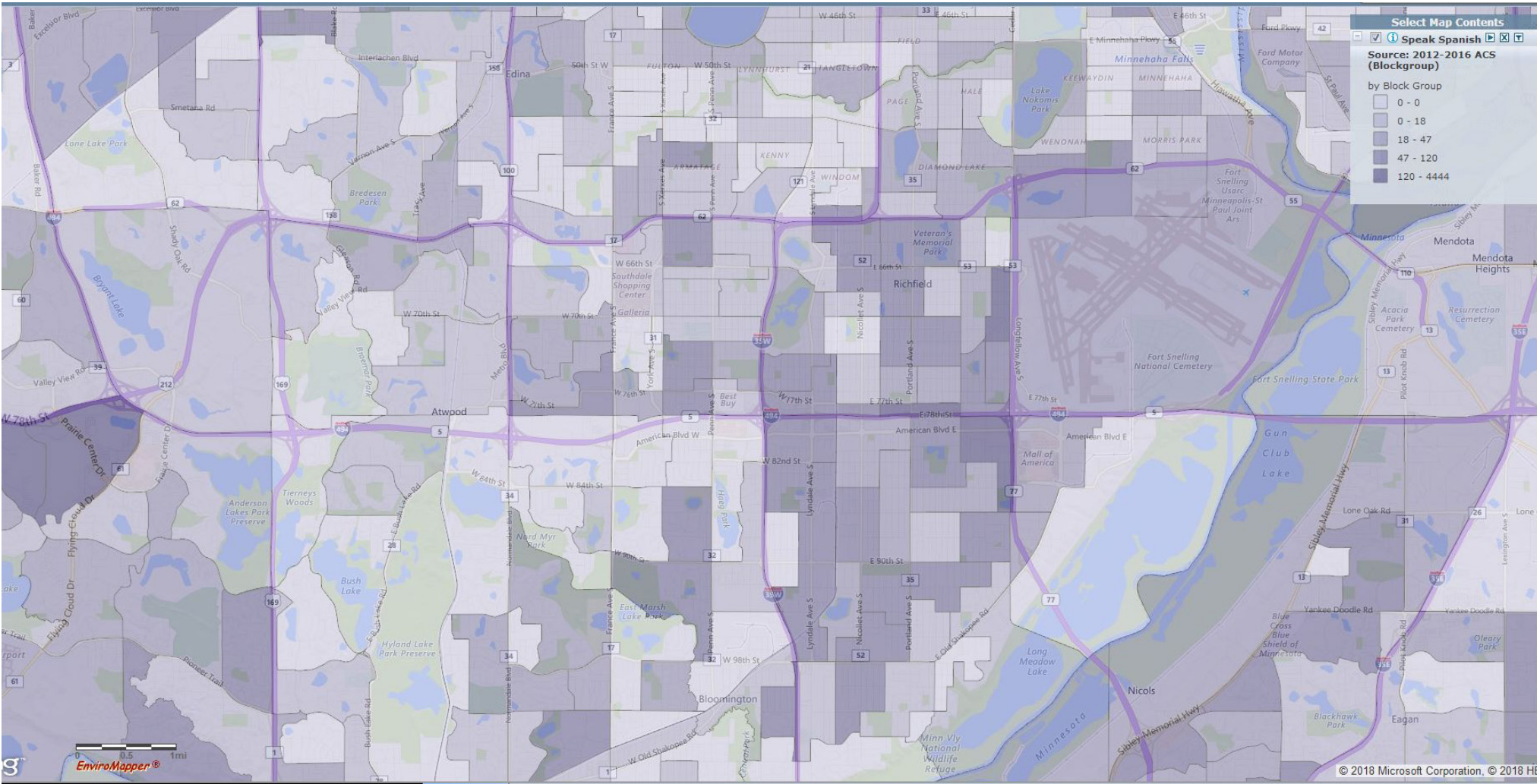


The Demographic Index is based on the average of two demographic indicators: Percent Low-Income and Percent Minority.

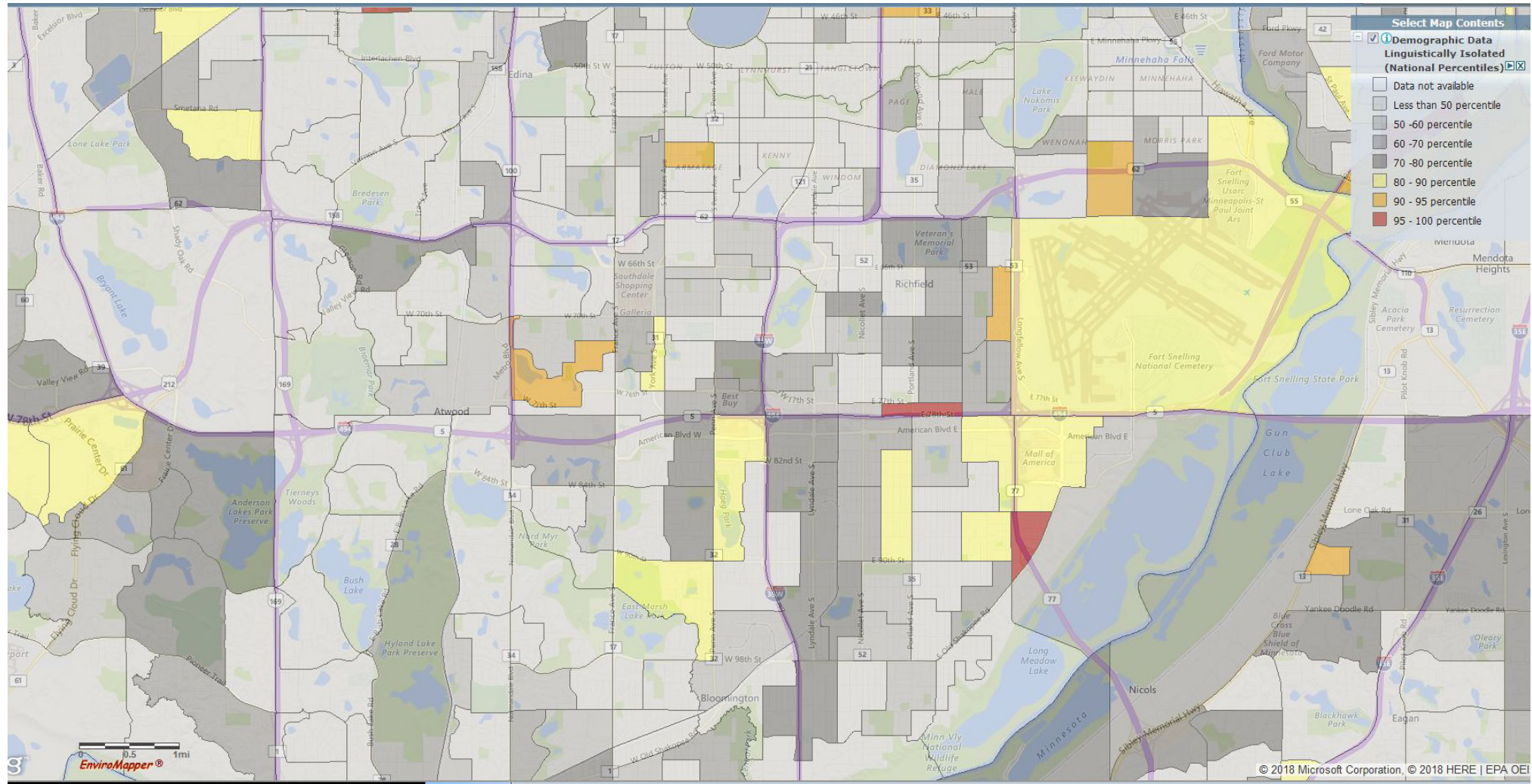
% Who Speak English Not at All (2012-2016 ACS)



Speaks Spanish (2012-2016 ACS)



Linguistically Isolated



A linguistically isolated household is one in which no member 14 years old and over speak English “very well.” In other words, all members 14 years old and over have at least some difficulty with English.

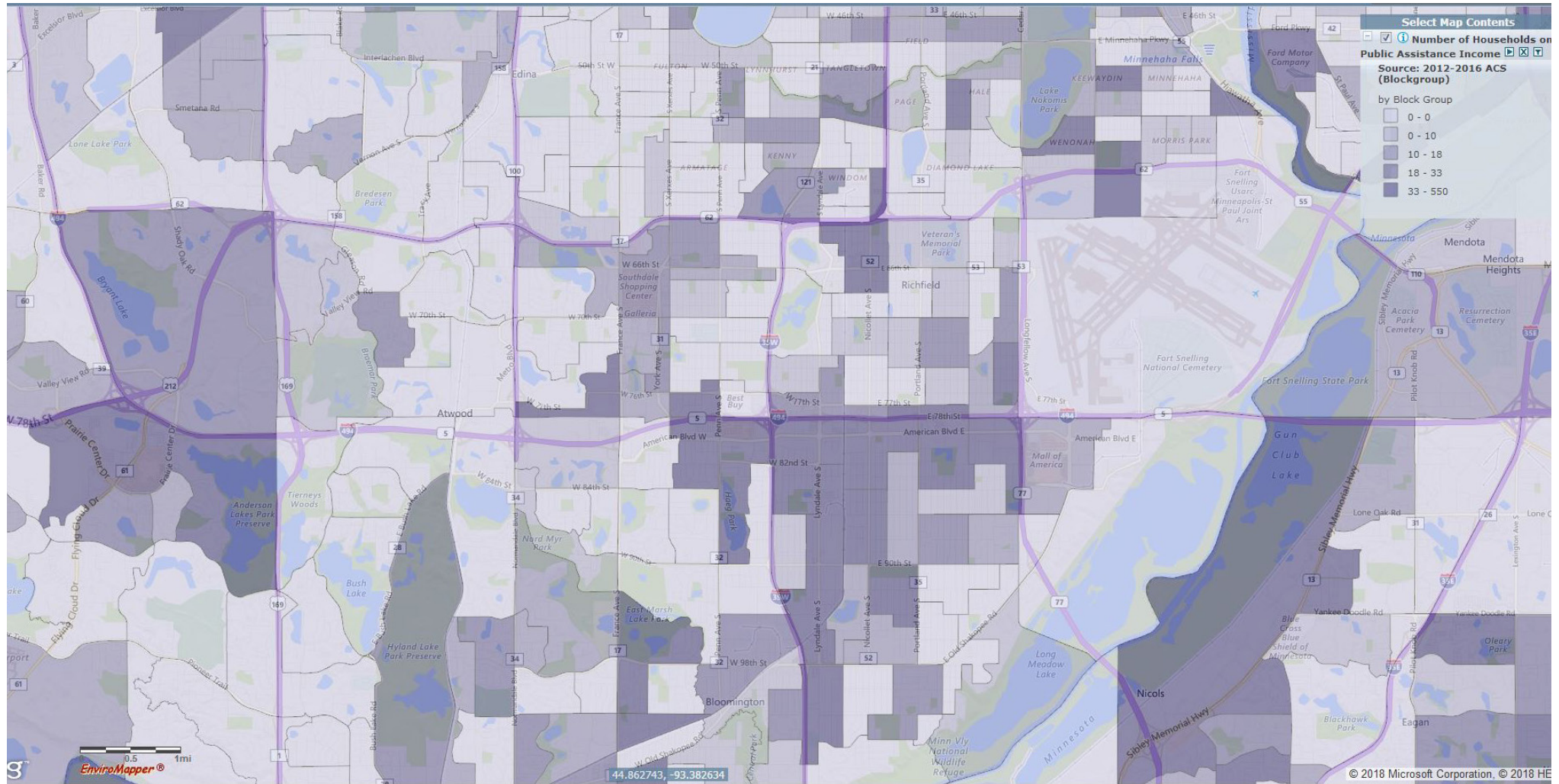
The map displays the Minneapolis-St. Paul metropolitan area, highlighting the locations of public housing buildings. Major highways (I-94, I-35, I-69) and local roads are shown. Parks and lakes are labeled, including Bryant Lake, Lake Nokomis, and Long Meadow Lake. The map includes a legend in the top right corner with the following entries:

- ☒ Subsidized Housing
- ☒ Public Housing Buildings

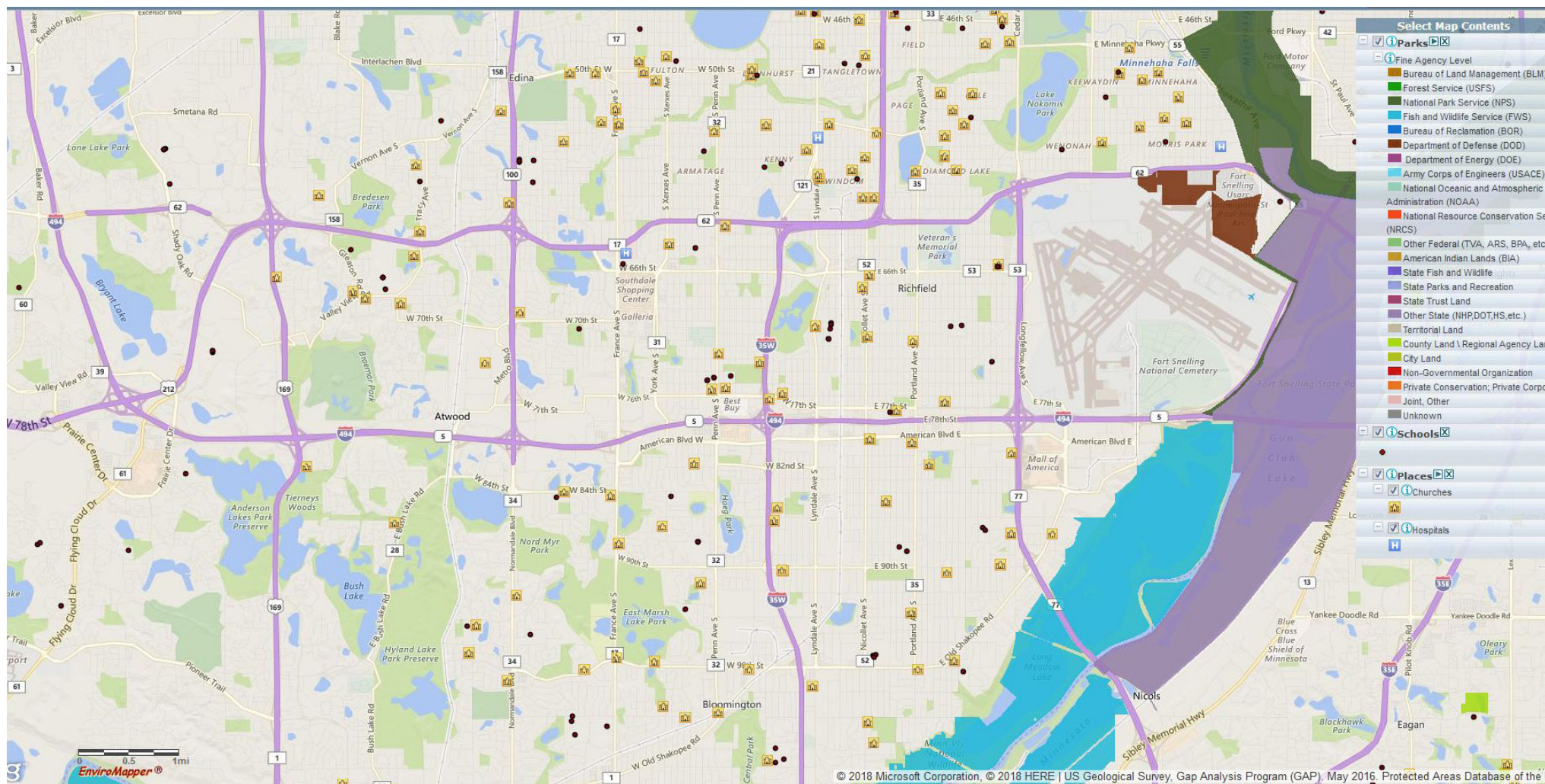
The map is sourced from EnviroMapper and is dated 2018. The coordinates for the map are 44.896680, -93.424004.

This map displays the Minneapolis-St. Paul metropolitan area, highlighting the Mississippi River and surrounding parks and lakes. Major highways (I-94, I-35, I-494) and local roads are shown. The map is overlaid with a grid of street names and numbered markers. A legend in the top right corner identifies 'Subsidized Housing' and 'Public Housing' locations. The map is credited to EnviroMapper and Microsoft Corporation.

of Households on Public Assistance Income (2012-2016 ACS)



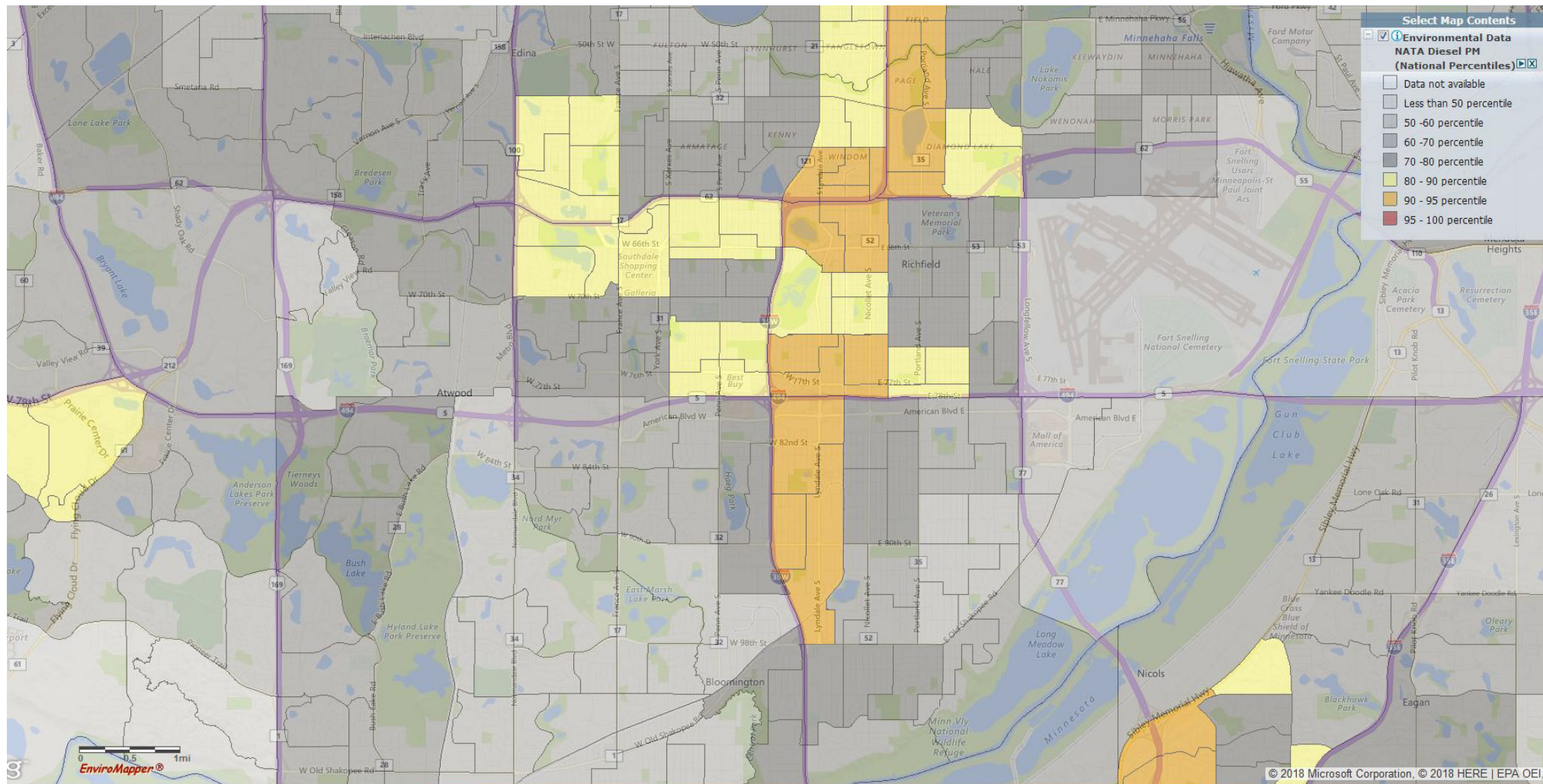
Parks, Schools, and Places



Source of all maps is the EPA Environmental Justice Screening and Mapping Tool (Version 2018).

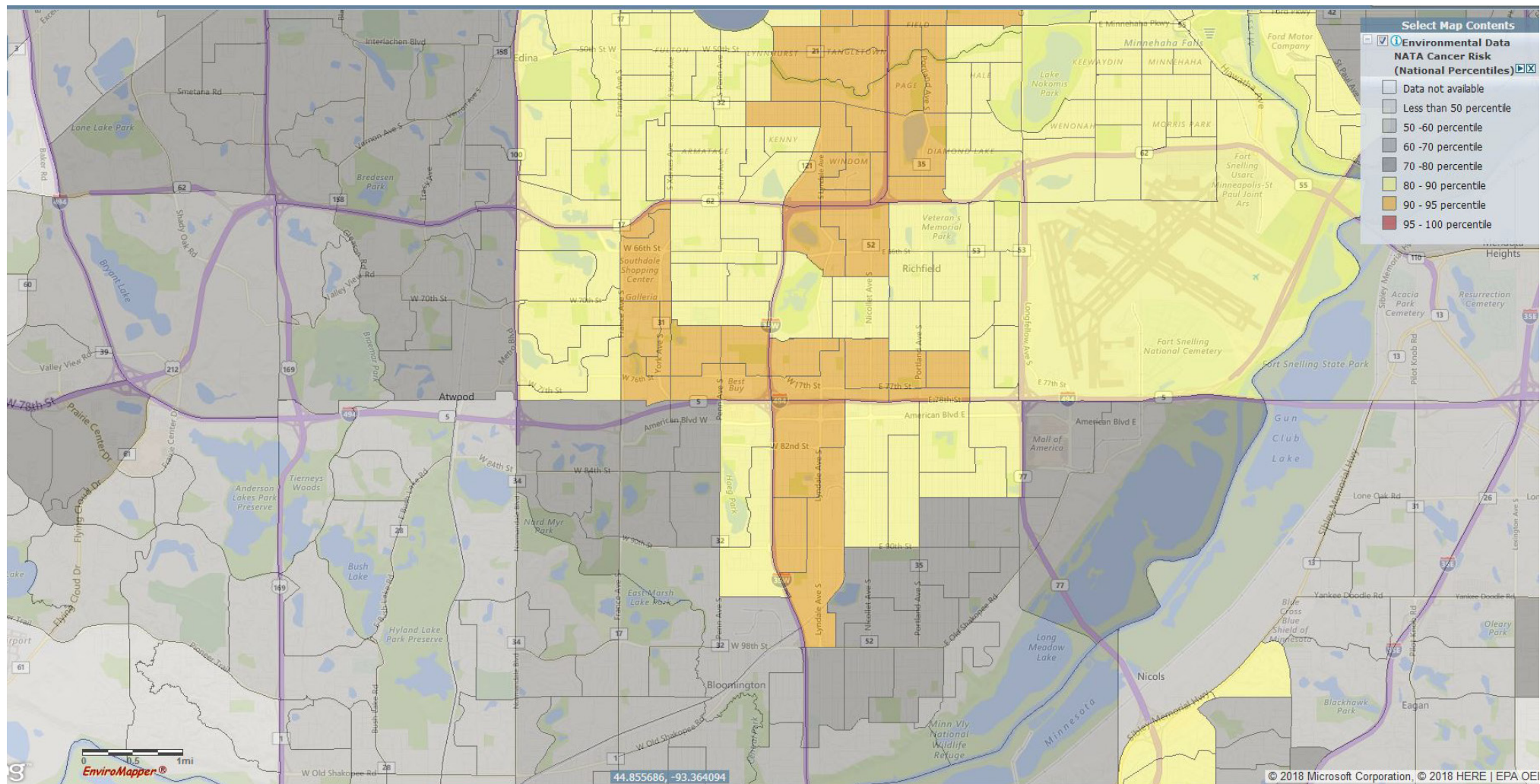
Environmental Data NATA Diesel PM

(National Percentiles)

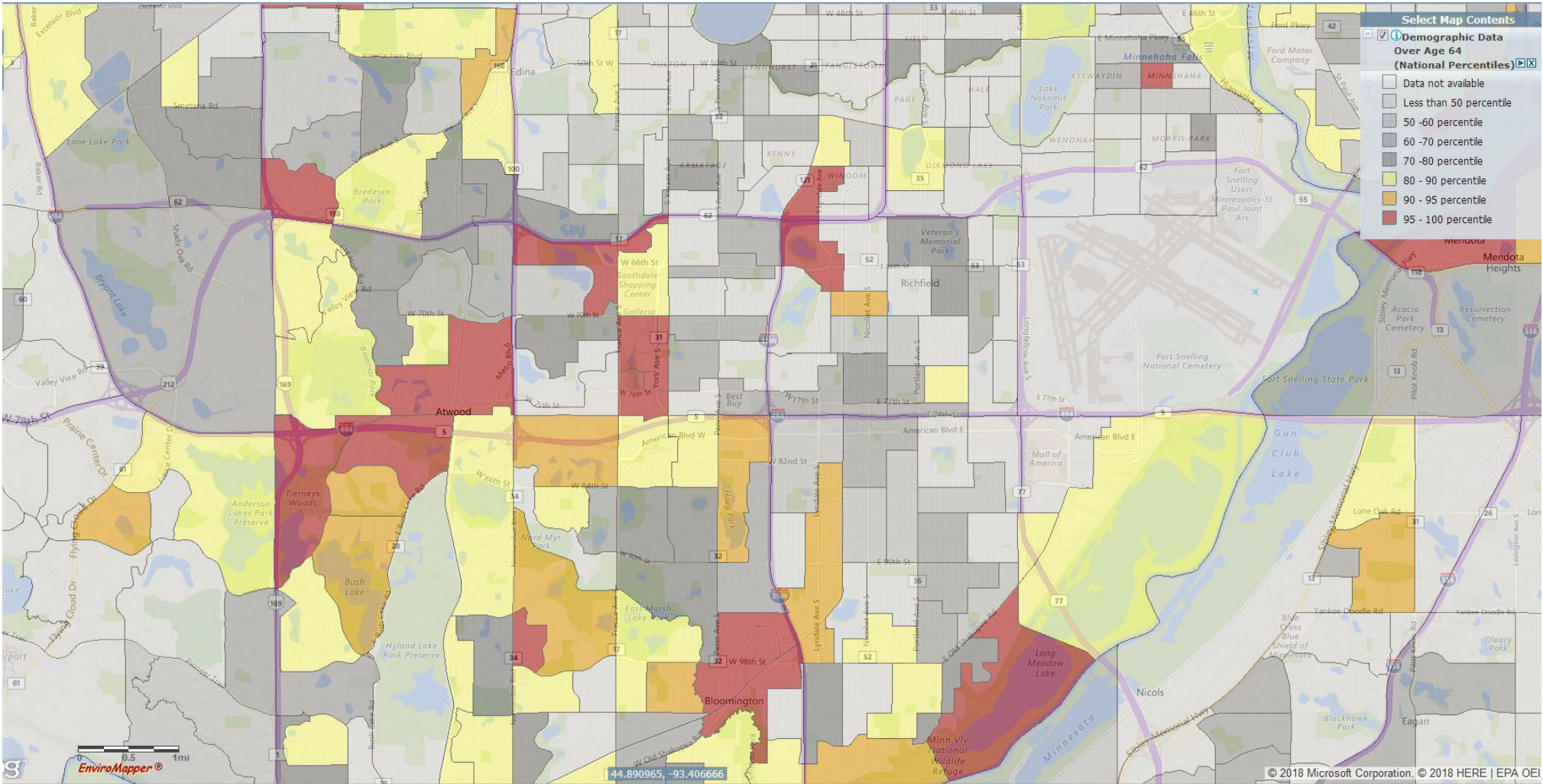


Environmental Data NATA Cancer Risk

(National Percentiles)



Over Age 64 (National Percentiles)



Source of all maps is the EPA Environmental Justice Screening and Mapping Tool (Version 2018).