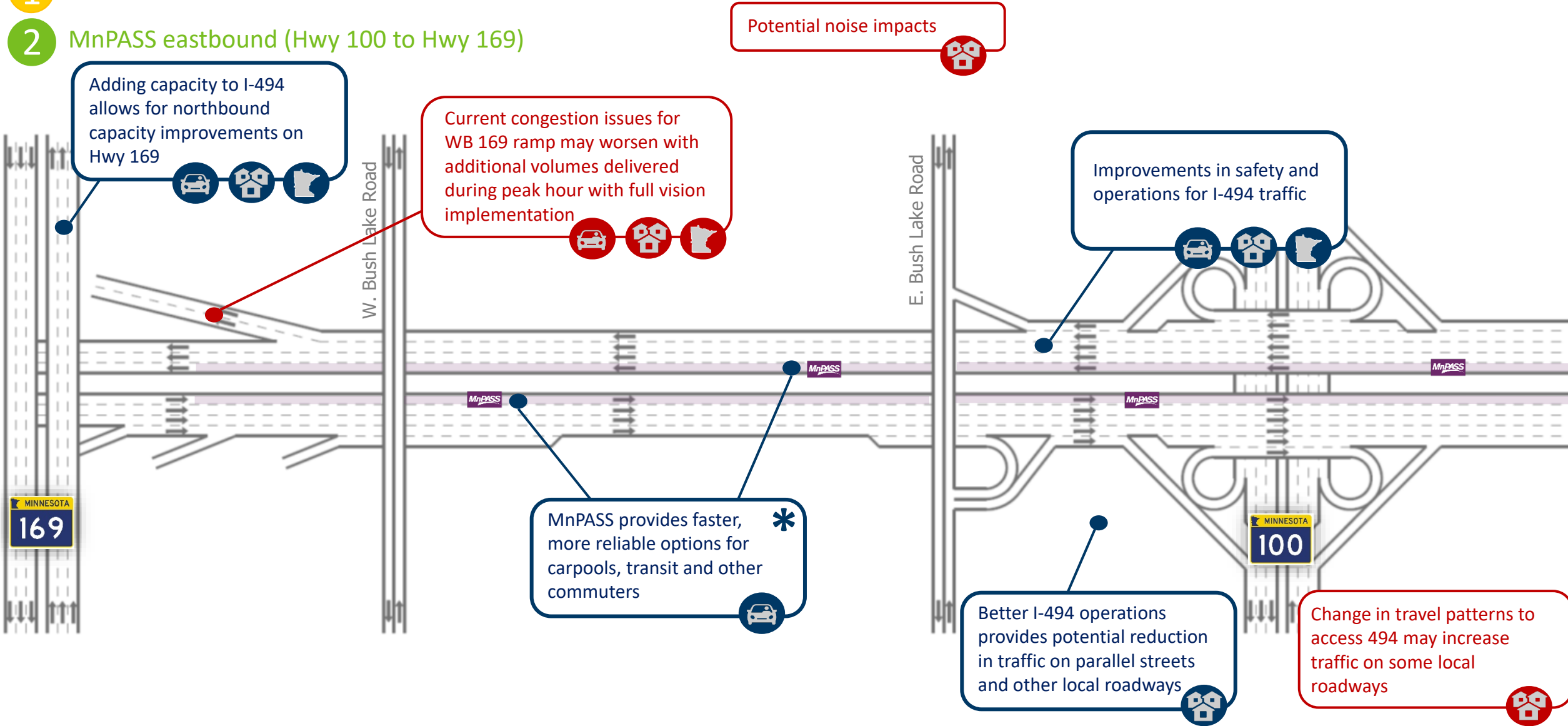


1 MnPASS westbound (Hwy 100 to Hwy 169)

2 MnPASS eastbound (Hwy 100 to Hwy 169)



LEGEND

ROADWAY SYSTEM USERS

- Statewide
- Commuters
- Local
- Local minority or low-income residence

IMPACT

BENEFIT

* Benefit or Impact may only be realized with full vision implementation

3 35W interchange flyover & MnPASS in westbound (35W to Hwy 100)

Air quality improvement with reduction in congestion



Improvements in safety and operations for I-494 traffic



France Ave

Better I-494 operations provides potential reduction in traffic on parallel streets and other local roadways



Improved transit service due to less congestion on service routes



Right-of-way impacts and loss or change in access



Local access changes to freeway system due to braid bridges at 35W and Penn Ave



Potential noise impact due to change in elevation of flyover ramp and profile change on I-494



MnPASS provides faster, * more reliable options for carpools, transit and other commuters



Change in travel patterns due to access changes at 35W increases traffic on "Box" roadways (Penn, Lyndale, 82nd and 76th).



Improved sidewalk connections on local system, improvements in pedestrian ramps (ADA Compliance)



Transit Orange Line operations benefit with improved 35W mainline & 82nd St interchange improvements



LEGEND

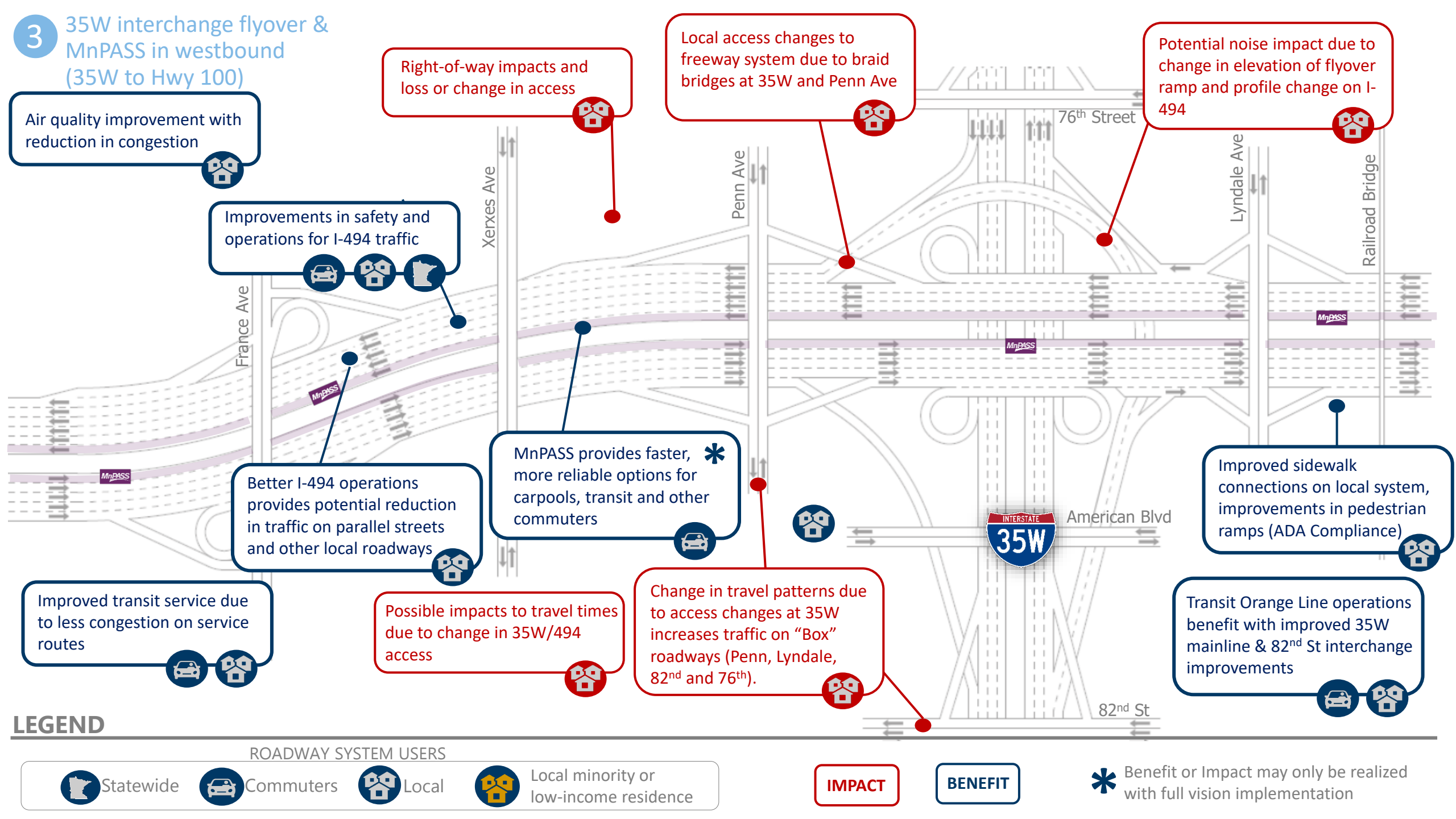
ROADWAY SYSTEM USERS

- Statewide
- Commuters
- Local
- Local minority or low-income residence

IMPACT

BENEFIT

* Benefit or Impact may only be realized with full vision implementation



4 MnPASS in eastbound (from 35W to Hwy 100)

Potential noise impacts

Air quality improvement with reduction in congestion

Local access changes to freeway system due to braid bridges at 35W and Penn Ave

Change in travel patterns due to access changes at 35W increases traffic on "Box" roadways (Penn, Lyndale, 82nd and 76th).

Improvements in safety and operations for I-494 traffic

Improved transit service due to less congestion on service routes

MnPASS provides faster, more reliable options for carpools, transit and other commuters

Better I-494 operations provides potential reduction in traffic on parallel streets and other local roadways

Improved sidewalk connections on local system, improvements in pedestrian ramps (ADA Compliance)

Possible impacts to travel times due to change in 35W/494 access

LEGEND

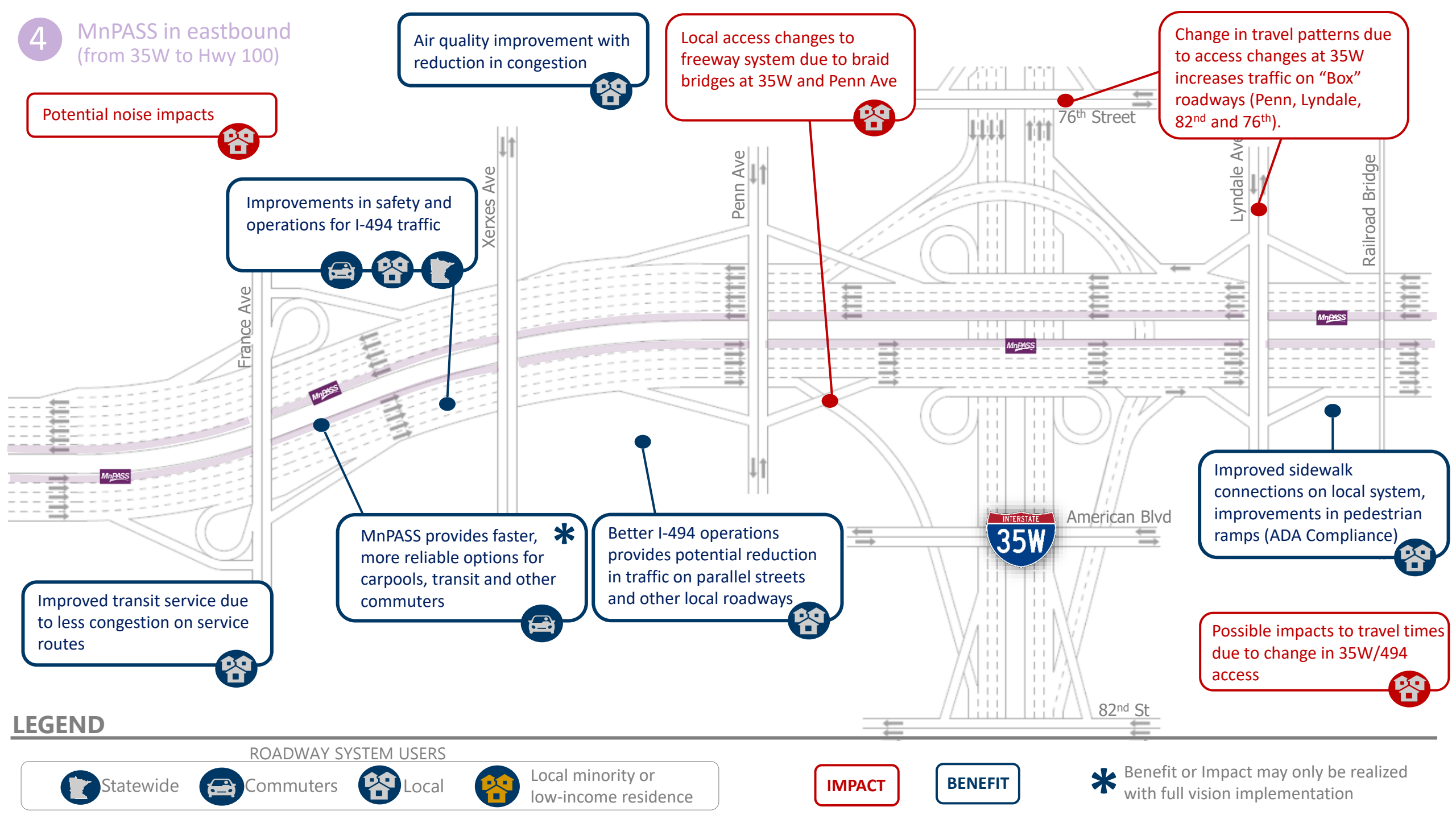
ROADWAY SYSTEM USERS

- Statewide
- Commuters
- Local
- Local minority or low-income residence

IMPACT

BENEFIT

* Benefit or Impact may only be realized with full vision implementation



5 82nd St interchange and grade raise on 35W

Potential noise impacts



Improvements in safety and operations for I-35W traffic



Change in travel patterns due to access changes at 35W increases traffic on "Box" roadways (Penn, Lyndale, 82nd and 76th).

Better I-35W operations provides potential reduction in traffic on parallel streets and other local roadways



Improved transit service due to less congestion on service routes



Local access changes to freeway system due to braid bridges at 35W and 82nd St



Improved sidewalk connections on local system, improvements in pedestrian ramps (ADA Compliance)



Possible impacts to travel times due to change in 35W/494 access



LEGEND

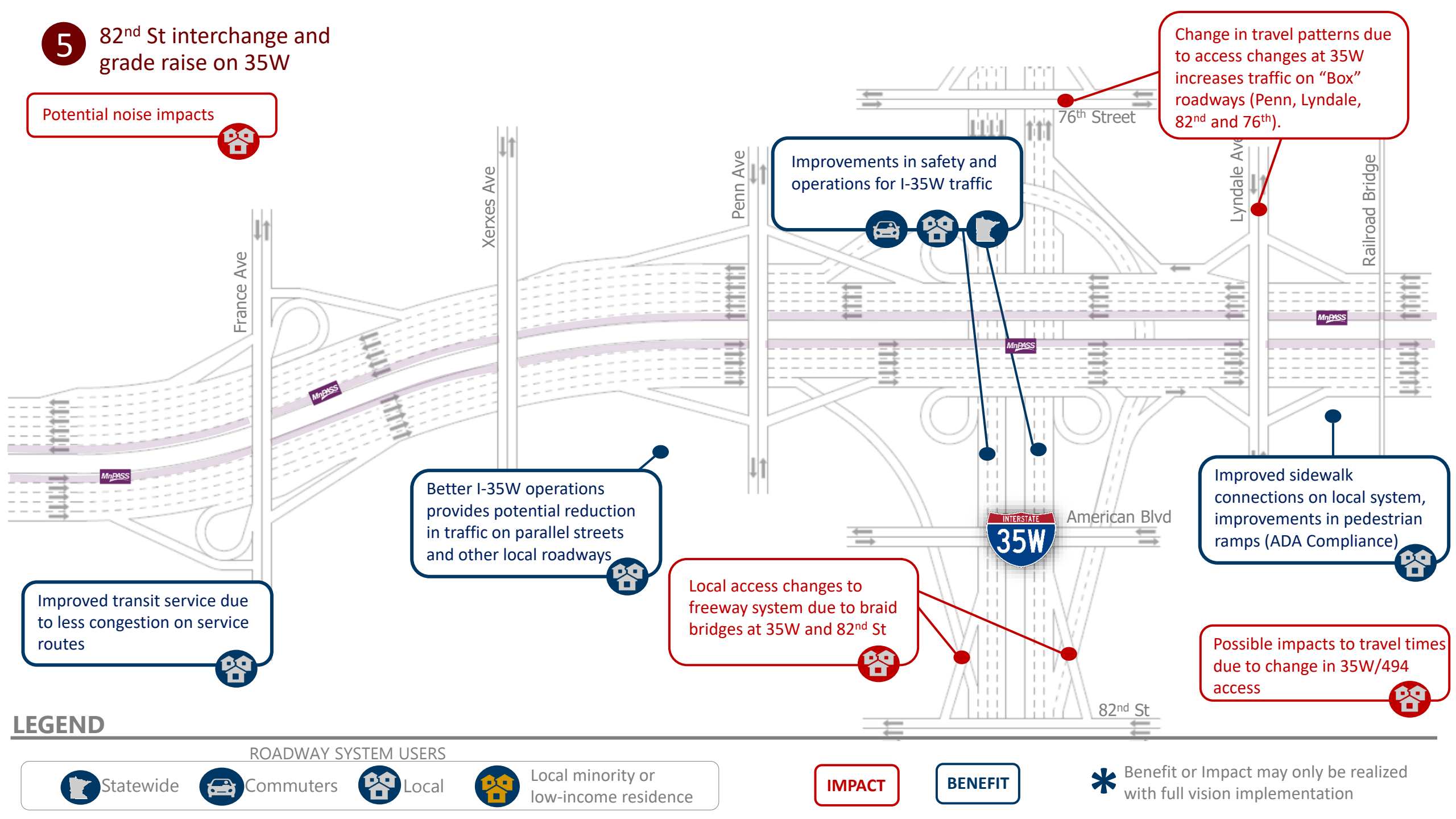
ROADWAY SYSTEM USERS

- Statewide
- Commuters
- Local
- Local minority or low-income residence

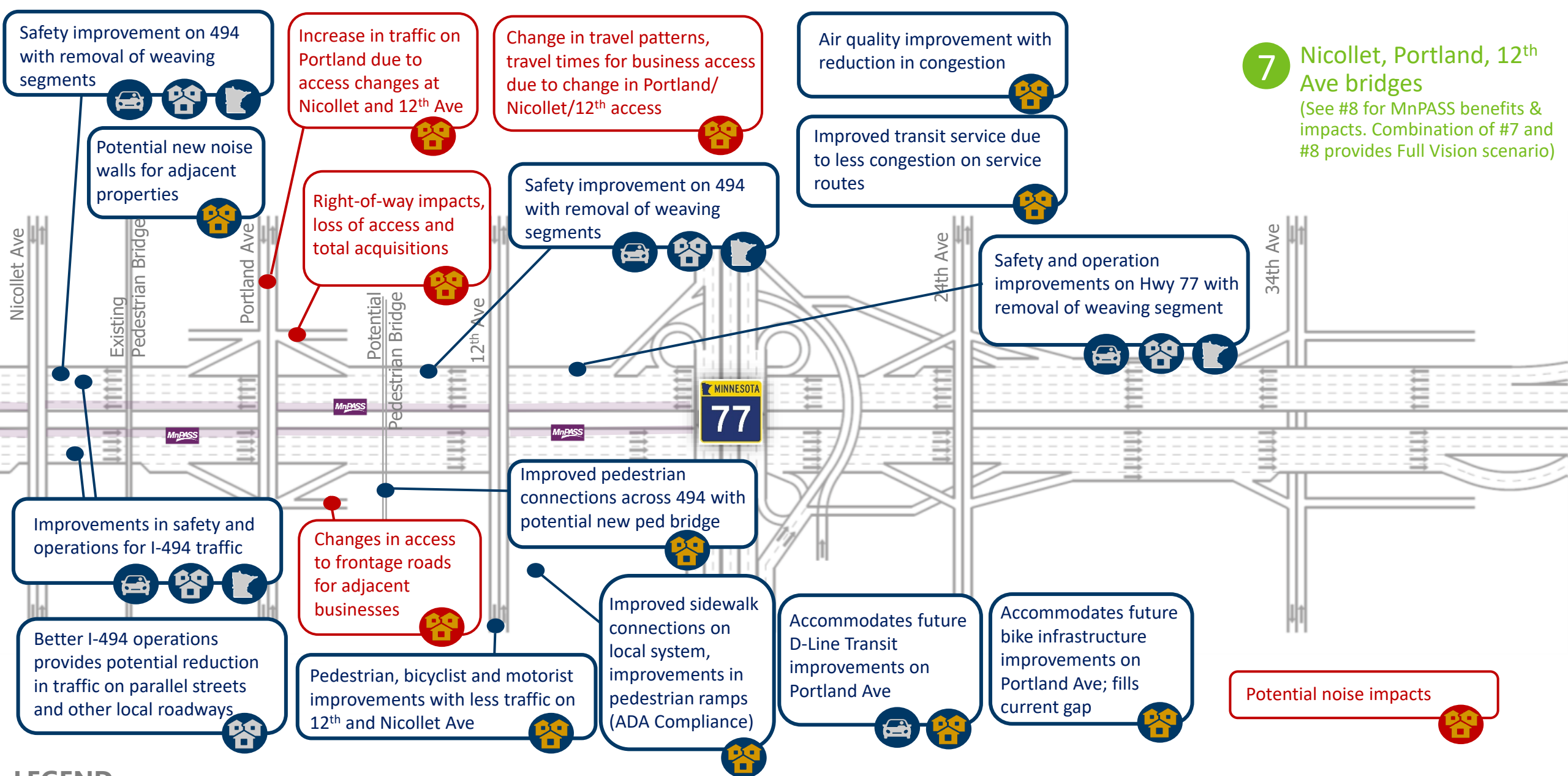
IMPACT

BENEFIT

* Benefit or Impact may only be realized with full vision implementation



7 Nicollet, Portland, 12th Ave bridges
 (See #8 for MnPASS benefits & impacts. Combination of #7 and #8 provides Full Vision scenario)



LEGEND

ROADWAY SYSTEM USERS

- Statewide
- Commuters
- Local
- Local minority or low-income residence

IMPACT

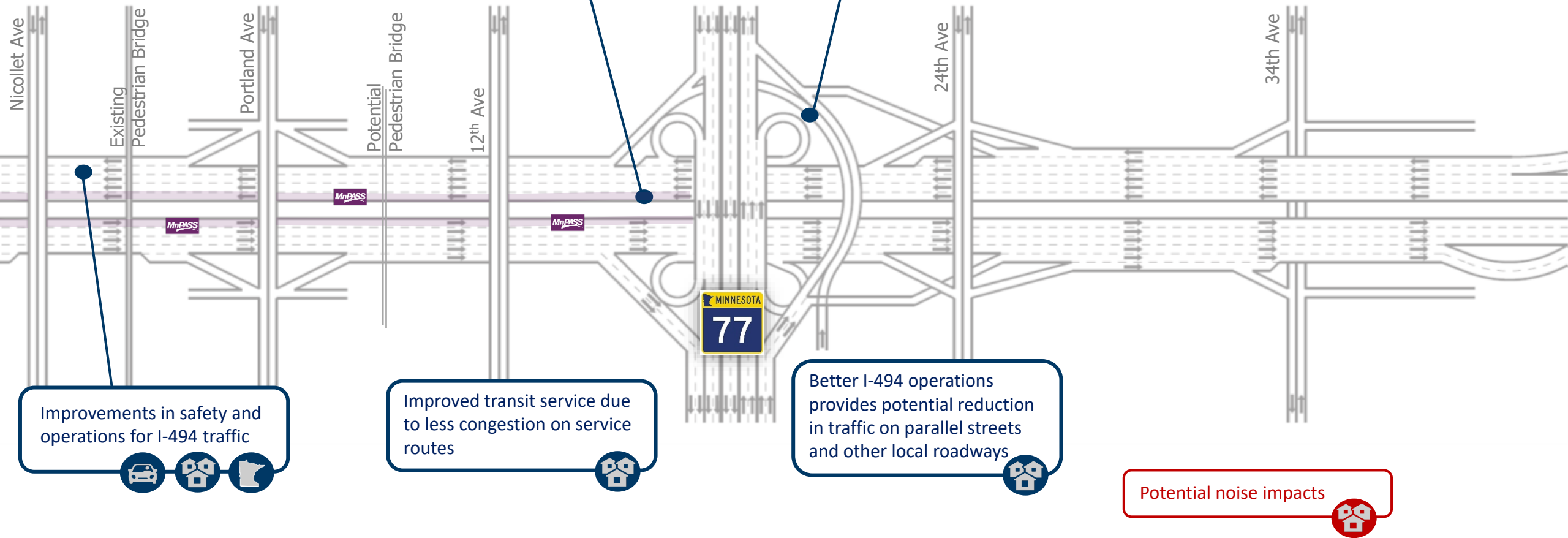
BENEFIT

Benefit or Impact may only be realized with full vision implementation

8 MnPASS westbound

(35W to Hwy 77)

NOTE: Eastern limit to be determined based on MnPASS traffic analysis (See #7 for Portland access benefits & impacts. Combination of #7 and #8 provides Full Vision scenario)



LEGEND

ROADWAY SYSTEM USERS



Statewide



Commuters



Local



Local minority or low-income residence

IMPACT

BENEFIT



Benefit or Impact may only be realized with full vision implementation

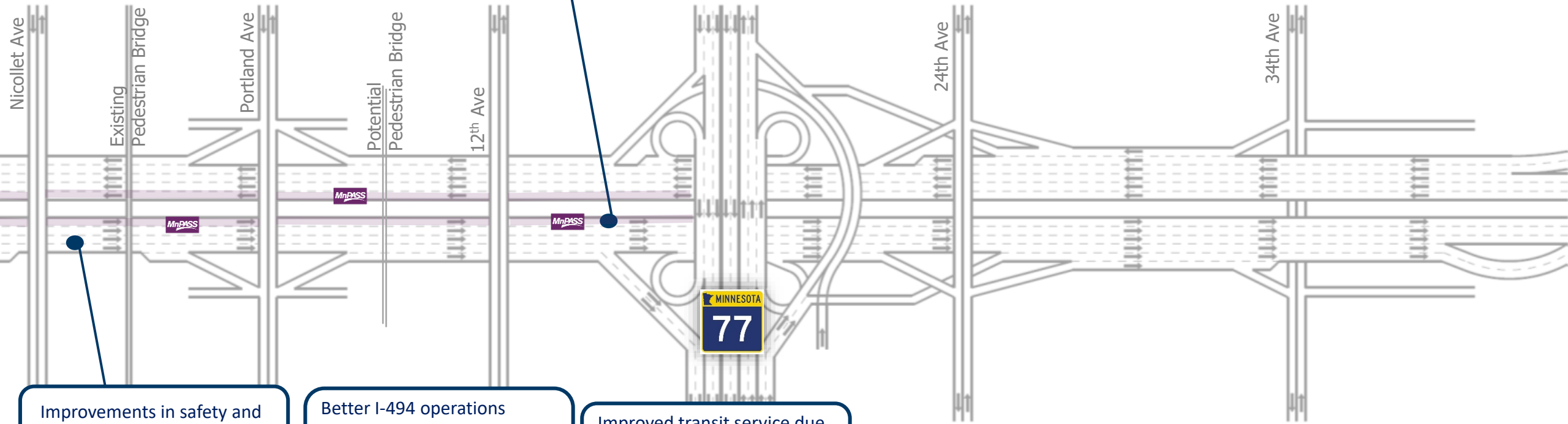
9 MnPASS eastbound (35W to Hwy 77*)

*Eastern limit to be determined based on MnPASS traffic analysis

MnPASS provides faster, more reliable options for carpools, transit and other commuters

Potential noise impacts

Air quality improvement with reduction in congestion



Improvements in safety and operations for I-494 traffic

Better I-494 operations provides potential reduction in traffic on parallel streets and other local roadways

Improved transit service due to less congestion on service routes

LEGEND

ROADWAY SYSTEM USERS

- Statewide
- Commuters
- Local
- Local minority or low-income residence

IMPACT **BENEFIT**

Benefit or Impact may only be realized with full vision implementation